

Product datasheet for **RR200649**

Abcc12 (NM_199377) Rat Tagged ORF Clone

Product data:

Product Type: Expression Plasmids
Product Name: Abcc12 (NM_199377) Rat Tagged ORF Clone
Tag: Myc-DDK
Symbol: Abcc12
Vector: pCMV6-Entry (PS100001)
E. coli Selection: Kanamycin (25 ug/mL)
Cell Selection: Neomycin
ORF Nucleotide Sequence: >RR200649 representing NM_199377
Red=Cloning site Blue=ORF Green=Tags(s)

TTTTGTAATACGACTCACTATAGGGCGGCCGGGAATTCGTCGACTGGATCCGGTACCGAGGAGATCTGCC
GCC**CGATCGCC**

ATGGTGGGCGAAGACCCGTACCTTATCTCAGACCTGGATCGCAGAGGCCGTGGAGATCCTTTGCCGAGA
GATATGATCCCAGCCTGAAAACCATGATCCCAATGCGACCCTATGCAAGGCTGGACCCCAATCCTGTGGA
TGATGCGGGCTGCTGTCTTCCGCCAGCTTTTCTGGCTCACACCTGTGATGATTGCAAGTTACAAGCAC
ACGCTGACCGTGGACACCTGCCTCCACTATCTCCTTACGACTCATCGGATGTCAATGCCAAGAGACTCC
AAATCCTTTGGGATGAAGAAATAGAAAGGGTAGGGCCCGAGCGGGCCTCTTTGGGCCGTGTGGTTTGGAA
ATTCCAGAGGACCCGTGTTCTGATGGATGTTGTAGCCAACATTCTCTGCATCATCATGGCAGCCTTAGGG
CCGACAGTTCTCATTACCAAAATCCTCCAGCACGTTACCAACATCTCTCCGGACACATCGGGATCAGCA
TCTGCTTGTGTCTGGCCCTTTTGGCCAGGTTTACCAAGTCTCTTTCGGGCCCTTGCTGGGCCAT
AAATTACCGCACAGCGATTTCGACTGAAGGTGGCCCTGTCCAGCTAATTTCAAATCTGTTGTCCTTC
AAGACATTAACCCACATCTCTGCAGGCGAGGTAATGTAATCGAGTGATAGTTATTCCTTGTGTTG
AGGCTGCCTTGTGTTGCTTTGCCAGCCACCATCCCGATCCTAATGGTCGTTTGTGCCGTGATGCCTT
TTTCATTCCTGGGTCCACCGCTCTGTTGGGATATGCGTGTATCTCATATTCATCCCGATCCAGATGTTT
ATGGCCAAACTCAACTCAGCTTTCCGAAGATCAGCAATTTCAAGTACAGACAAGCGGGTTAGACAATGA
ATGAGTTTCTGACCTGCATCAAACCTGATTAATATGATGCTGGGAGAAATCTTTTATGAACACCATTCA
CGACATAAGAAAGAGAGAGAAAAAATTACTGAAAAAGGCTGGATACGTCCAAAGTGGAACTCAGCCCTG
GCTCCCATAGTGTCTACCATAGCCATTGTGTCTACTTTACCTGCCACATTTTCTGAAACGCACACTCA
CTGCCCTGTGGCATTAGTGTGATTGCCATGTTAATGTAATGAAGTTTCAATTGCAATCTTGCCCTT
CTCGGTCAAAGCAGTGGCCGAAGCCAGTGTCTCTAAGGAGAATGAAGAAAATCTTGTAGCTAAAAGT
CCCCATCCTACATCACCAACCAAGACCCAGATACTATCTTGCTTTTAGCAAATGCCACCTGACAT
GGGAACAAGAAATCAACAGGAAAAGAGGCCCATCGAAGACACAAGATCAGAGAAGGCACGTTTTCAAGAA
ACAGAGGGCAGAGCTATACAGTGAGCAAAGTCTCTCAGATCAGGGAGTTGCCAGCCAGAGCGGAAAGT
GGCAGCCCAAGTCACTACTACACAACATCAGCTTTGTGGTGAGAAAGGAAAGTCTTGGGGATATGCG
GGAATGTTGGAAGCGGGAAGAGTTCCCTCATTTCTGCTTCTAGGGCAGATGCAGTTACAGAAAGGGGT
CGTGGCTGCCAGTGGACCTTTGGCTTATGTTTCTCAGCAAGCTTGGATCTTCCACGAAATGTGAGGGAG



[View online >](#)

AACATCTGTTTGGAGAGAAGTACAACCACCAAAGGTACCAACACACGGTTCATGTCTGTGGGCTCCAGA
AGGATTTGAACAGCCTCCCTTATGGAGACCTGACTGAGATTGGGGAGCGGGGTGTGAACCTCTCCGGGG
ACAGAGGCAGAGGATCAGCCTGGCCCGGCTGTGTACGCCAACCGTCAGCTCTACCTGCTGGATGACCCG
CTCTCGGCAGTGGATGCCCATGTGGGGAAGCACGTCTTTGAAGAATGCATTA AAAAGACTCAAGGGGA
AGACTGTGGTGTGGTTACCCACCAGCTGCAGTTCCTGGAGTCTTGCATGAGGTCATTCTGTTAGAAGA
TGGAGAGATCTGTAAAAGGGCACCCACAAGGAGTTGATGGAAGAGAGAGGCCGCTATGCAAAGCTGATC
CACAACTCAGGGGACTGCAATTC AAGGATCCAGAGCACATTTACAATGTAGCCATGGTGGAGACCCTGA
AGGAGAGCCAAGCTCAAAGGGATGAAGACGCTGTCTTGGCTTCAGGAGATGAGAGAGATGAAGGAAAAGA
ACCCGAGACAGAAGAATTTGTGGACATAAAAGCTCCCCTGCACCAGCTCATCCAGATTGAATCCCCCAA
GAAGGAATCGTGACCTGGAAAACATATCACACGTATATTAAGCTTCTGGAGGGTACCTGGTCTCCTTCC
TGGTTTTGTGTCTTCTTCTGATGATGGGCAGCTCTGCCTCAGCACCTGGTGGCTGGGGCTCTGGTT
GGACAGTGGCTCCAGGTCATCTGTGCACCCAGAGCAATGAGACAGCCTGCAACGTTAACCAGACGCTG
CAGGACACCAAACACCACATGTACCAGTTGGTTTACATAGCAAGCATGATGTCTGTGCTGACGTTTGGCA
TCATCAAAGGCTTCACCTTCACCAACACGACACTGATGGCGTCTCCTCCCTCCACAACAGAGTGTTTAA
CAAGATCGTCAGCAGCCCAATGAGCTTCTTTGACACGACTCCACAGGCCGGCTAATGAACCGCTTTTCT
AAAGATATGGATGAGCTAGATGTGAGGCTGCCATTTACGCTGAGAATTTTTTGCAGCAGTTTTCTATGG
TGGTGTATTCTGGTGATTATGGCTGCCTCGTTTCTGTTGTCCTCGTGGTGTGGCTGGCCTGGCTAT
TCTCTTCTATCCTTTTACGCATTTTCCATCGAGGGGTGCAGGAGCTCAAGCAGGTGGAGAATCAGC
CGGTCCCCTTGGTTCTCTCACATCACCTCCTCCATGCAGGGTCTGGGTGTATCCATGCCTACGACAAAA
AGGACGATTGCATCAGCAAGTTTAAAGGCCTCAATGATGAAAACCCAGCCACCTTGTACTTTAACTG
TGCACTCAGGTGGTTTGTCTCAGAATGGACATCCTCATGAACATCGTCACCTTTGTCTGGCCTTGGCTG
GTGACCTGAGCTTTTCTCAATCAGTGTCTTCAAAAAGGCTTGTCCCTGTCTTACATCATCCAGCTCA
GTGGACTGCTTCAAGTGTGTGCGAACAGGAACAGAGACCCAAAGCCAAGTTCACCTCTGCAGAGCTAAT
GAGGGAGTACATTTGACCTGTGTCCCTGAACACACTCAATCCTTCAAAGTGGGGACCTGTCCCAAAGAC
TGGCCGAGCCGTGGGGAGATAACTTTCAAGGACTATCGGATGAGATACAGAGACAACACCCCTCTCGTTC
TCGATGGGTTGAACCTGAACATCCAAAGCGGGCAGACAGTTGGGATTGTGGGAAGAACGGGCTCTGGTAA
ATCATCACTGGGCATGGCCCTGTTTGTCTGGTGAACACAGCCTCTGGCACCATCTTATTGACGAGGTG
GATATCTGCACTGTGGTCTGGAAGAGCTCCGAACCAAGCTGACCATGATCCCCAGGATCCTGTCTGT
TTGTAGGTACAGTAAGGTACAATTGGATCCCTTGGGAGTACACCCGACGAGATGCTCTGGCATGTTTT
GGAGAGAACATTCATGAGAGACACAATAATGAAACTCCCAGAGAAATTACAGGCAGAAGTACAGAAAAAC
GGGAAAACCTTTCAGTAGGAGAACGCCAGCTGCTTTGTATGGCCCGGGCACTTCTCCGTAAATCAAAA
TCATTCTCTTGAAGCTACTGCCTCCATGGATTCCAAGACGGACACCCTTGTTCAGAGCACCATAAA
AGAGGCCTTCAAAGCTGCACAGTGTGACCATCGCTCATCGCCTAAACACTGTTCTCAACTGTGACCTT
GTCCTGGTCATGGAAAATGGGAAGGTGATTGAGTTTGACAAGCCTGAAGTCTCGCTGAGAAGCCTGACT
CTGCATTTGCGATGTTACTAGCTGCAGAAGTTGGACTG

ACGCGTACGCGGCCGCTCGAGCAGAACTCATCTCAGAAGAGGATCTGGCAGCAATGATATCCTGGATT
ACAAGGATGACGACGATAAGGTTTAA

Protein Sequence: >RR200649 representing NM_199377
 Red=Cloning site Green=Tags(s)

```

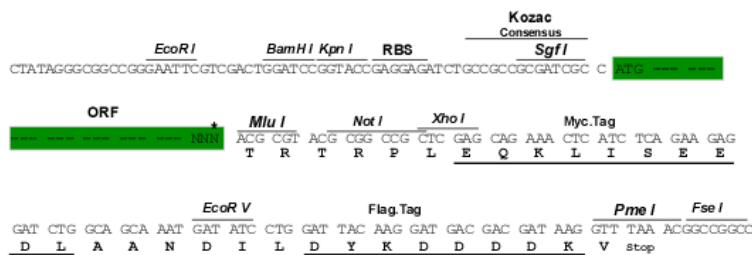
  MVGEDPYLISDLDRRGRRSFAERYDPSLKTMIPIRMPYARLAPNPVDDAGLLSFATFSWLTVMIRSYKH
  TLTVDTLPLSPYDSSDVNAKRLQILWDEEIERVGPASLGRVWVKFQRTRVLMVVANILCIIMAALG
  PTVLIHQILQHVNTISSGHIGISICLCLALFATEFTKVLFRALAWAINYRTAIRLKVALSTLIFKNLLSF
  KTLTHISAGEVLNVLSSDSYSLFEALFCPLPATIPILMVVCAVYAFFILGSTALVGICVYLIFIPIQMF
  MAKLNSAFRRSAISVTDKRVQTMNEFLTICKLIKMYAWEKSFMTIHDIRKREKLLKAGYVQSGNSAL
  APIVSTIAIVSTFTCHIFLKRRTLAPVAFSVIAMFNVMKFSIAIILPFSVKAVAEASVSLRRMKKILVAKS
  PPSYITQPEDPDTILLANATLTWEQEIINRKRGPSKTQDQRRHVFKKQRAELYSEQSLSDQGVASPERQS
  GSPKSVLHNI SFVVRKGVVLGICGNVSGKSSLISALLGQMQLQKGVVAASGPLYVVSQAWIFHGNVRE
  NILFGKEYNHQRYQHTVHVCGLQKDLNSLPYGDLTEIGERGVNLGGQRQRI SLARAVYANRQLYLLDDP
  LSAVDAAHVGHVFEECIKKTLKGTVVLVTHQLQFLESCDEVILLEGEICEKGT HKELMEERGRYAKLI
  HNLRLGLQFKDPEHIYNVAMVETLKEQAQRDEDAVLASGDERDEGKEPETEEFVDIKAPVHQLIQIESPQ
  EGIVTWKYHTYTIKASGGYLVSFLVLCFLFLMMGSSAFSTWWLGLWLDGSGQVICAPQSNETACNVNQT
  QDTKHHMYQLVYIASMMSVLTFGI IKGFTTNTTLMASSSLHNRVFNKIVSSPMSFFDTTPTGRLMNRFS
  KDMDEL DVRLPFHAENFLQQFSMVVILVIMAAFPVVLVVLAGLAILFFILLRIFHRGVQELKQVENIS
  RSPWFSHITSSMQGLGVIHAYDKKDDCISKFKALNDENSSHLLYFNALRWFALRMDILMNI VTFVVAL
  VTLFSFSSISASSKGLSLSYIIQLSGLLQVCVRTGTETQAKFTSAELMREYISTCVPEHTQSFVKVGTCPKD
  WPSRGEITFKDYRMRDNTPLVLDGLNLIQSGQTVGIVGRGTSGKSSLGMAFRLVEPASGTIFIDEV
  DICTVGLEELRTLTMIPQDPVLFVGTVRYNLDPLGSHTDEMLWHVLERTFMRDITMKLPEKLQAEVTEN
  GENFSVGERQLLCMARALLRNSKIILLDEATASMSKDTLVQSTIKEAFKSCVTLTIAHRLNTVLNCDL
  VLMENGVIEFDKPEVLAEKPD SAFAMLLAAEVGL
  
```

TRTRPLEQKLISEEDLAANDILDYKDDDDKV

Restriction Sites:
Cloning Scheme:

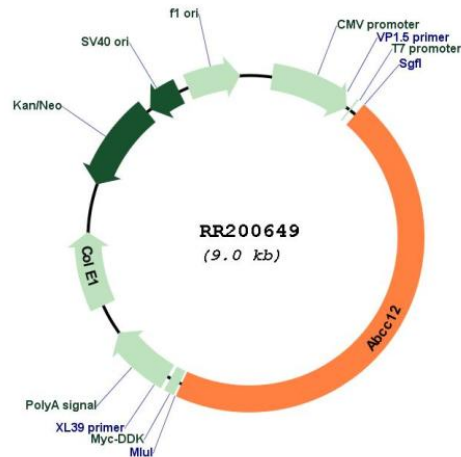
Sgfl-MluI

Cloning sites used for ORF Shutting:



* The last codon before the Stop codon of the ORF

Plasmid Map:



ACCN: NM_199377

ORF Size: 4098 bp

OTI Disclaimer: The molecular sequence of this clone aligns with the gene accession number as a point of reference only. However, individual transcript sequences of the same gene can differ through naturally occurring variations (e.g. polymorphisms), each with its own valid existence. This clone is substantially in agreement with the reference, but a complete review of all prevailing variants is recommended prior to use. [More info](#)

OTI Annotation: This clone was engineered to express the complete ORF with an expression tag. Expression varies depending on the nature of the gene.

Components: The ORF clone is ion-exchange column purified and shipped in a 2D barcoded Matrix tube containing 10ug of transfection-ready, dried plasmid DNA (reconstitute with 100 ul of water).

Reconstitution Method:

1. Centrifuge at 5,000xg for 5min.
2. Carefully open the tube and add 100ul of sterile water to dissolve the DNA.
3. Close the tube and incubate for 10 minutes at room temperature.
4. Briefly vortex the tube and then do a quick spin (less than 5000xg) to concentrate the liquid at the bottom.
5. Store the suspended plasmid at -20°C. The DNA is stable for at least one year from date of shipping when stored at -20°C.

RefSeq: [NM_199377.1](#), [NP_955409.1](#)

RefSeq Size: 4541 bp

RefSeq ORF: 4101 bp

Locus ID: 291923

UniProt ID: [Q6Y306](#)

Cytogenetics: 19p11

MW: 153 kDa

Gene Summary: member of the ATP-binding cassette (ABC) transporter family; human homolog is a candidate disease gene for paroxysmal kinesigenic choreoathetosis [RGD, Feb 2006]