

## Product datasheet for **RR200605**

### Zkscan3 (NM\_001012053) Rat Tagged ORF Clone

#### Product data:

Product Type:	Expression Plasmids
Product Name:	Zkscan3 (NM_001012053) Rat Tagged ORF Clone
Tag:	Myc-DDK
Symbol:	Zkscan3
Synonyms:	Zfp307
Vector:	pCMV6-Entry (PS100001)
E. coli Selection:	Kanamycin (25 ug/mL)
Cell Selection:	Neomycin



[View online »](#)

**ORF Nucleotide Sequence:**

>RR200605 representing NM\_001012053  
 Red=Cloning site Blue=ORF Green=Tags(s)

TTTTGTAATACGACTCACTATAGGGCGGCCGGAATTCGTCGACTGGATCCGGTACCGAGGAGATCTGCC  
 GCC**CGGATCGCC**

ATGGCTAGAGAATCAAGGAAAGCACAAACCTGGACTCAGACTCTGCAGAGGACCAGATGGAGCTACTGG  
 TCATAAAGGTGGAACAAGAAGAGGTCTCCCATTTGGCAGAGGAGACCAGTTGGCTGGGCAGTCTGGGCC  
 TGACCGCTCCCGCCAGCGCTTCCGTGCTTTCCGCTACCCAGACGACGAGGGCCCCGGCAGGCGCTGAGC  
 CGGCTCCGCGAGCTATGCAGACAGTGGCTGCGGCCAGACATGCACAGCAAGGAGCAGATCCTGGAGCTGC  
 TGGTGCTGGAGCAGTTCTGACCATCCTGCCAGGGGAGCTGCAGGCCTGGGTGCGCGAGCAGCACCCCGA  
 CAGCGGAGAGGAGGTGGTGGCACTGCTGGAGTACTTGGACAGGCAGCTGGATGAGACCCCTCCACAGTT  
 CCAGATGATGACGATGGGCAGGAACCTTTGTTCCAAGGCAGTACTGTTGACATCAGCTCAAGGCTCAG  
 AAAGTAGCCAGATGGAGTCCATGGAGCCTTTGCTTAAACAGGAATCTTTGGGATCCCTGCCCTCAGAAGT  
 TAGAGTACCCAGGCAGGCATTGTGGAGAAGATGGAGTGACAGTACCAGGCTCACATCAGAGCTGCAG  
 GGCTGCTGAAAATGGAAGATGTAGCCCCAGGCCTTTCCCGAGATGGACAGAGCAGGATTCATCTCAGA  
 TGAACCTCTACAAAGATGAAATGCAGGAGAACTCTGGCAGCCTGGTTCCCTGGATGAGAACATGCAAAAC  
 TAAGGTTAGGGACTTGCCTCCAGCTGAAGAAAACAGAAACAAAAGCCTGAGCAGACAGTGTCTTCCCTG  
 GGTGAAGACACTGTCCAGATTCTACAGGTACAGAAGCCAGTGAGCAGGAAGGCAAGTTACAGACAACAC  
 AGAAGAATGCCACGGGAAACAGGCGTTCTACTGCCGTGAATGTGGGAAGAGCTTTGCTCAGAGTTCAGG  
 CCTAAGTAAACACAAAAGAAATCCACACTGGATTGAAACCTATGAATGTGAGGAGTGTGGCAAAGCCTTC  
 ATTGGGAGCTCAGCTCTCATTATTCATCAGAGAGTTCACACTGGTGAAGCCATATGAGTGTGAAGAAT  
 GTGGTAAGGCCTTCAGTCACAGCTCAGATCTCATCAAGCACAGAAACCCACACTGGAGAAAAGCCCTA  
 CGAGTGTGATGACTGTGGGAAAACCTTCACTCAGAGCTGCAGCCTCCTTGAACATCACAGAATTCACACT  
 GGGGAGAAGCCATACCAGTGCAACATGTGTCCCAAAGCCTTTAGCGTAGCTCACATCTCCTGAGACATC  
 AGAGGACCACACTGGGGATAAAGATTTTTTTGTTCCAGAACCTTACTGGGAAAGTCAAGTAGGGTGGAA  
 AAGCCATTGGGAAAATATTGAGACTCCTGTGTCTATCAATGCAATGATTGTGAGAGAAGTTTTAGTAGG  
 ATTACAAGCCTTATTGAACACCAAAAAGTACACTGGTGAAGCCCTTTGAATGCCAGACCTGTGGAA  
 AAGGCTTTACCCGACCTTATACCTTATCAACATCAGAGAAGACACACGGGGAAGAAAACCTTCTGTAC  
 AGTGACCCCTGCTGTACATTCGAAGTTGGTGTCAACTGTCATTGAAC

**ACGCGT**ACGCGGCCGCTCGAGCAGAAACTCATCTCAGAAGAGGATCTGGCAGCAAATGATATCCTGGATT  
 ACAAGGATGACGACGATAAGGTTTAA

**Protein Sequence:**

>RR200605 representing NM\_001012053  
 Red=Cloning site Green=Tags(s)

MARESRSTTLDSHAEDQMELLVIKVEQEEVSPLAETSWLGSPPDRSRQRFRAFPRYPDAAGPRQALS  
 RLRELCRQWLRPDMHSKEQILELLVLEQFLTILPGELQAWVREQHPDSGEEVVALLEYLDRQLDETPPVQV  
 PDDDDGQELLCSKAVLLTSAQSESSQMESMEPLKQESLGSLPSEVRVTQAGHCGEDGVTATRLTSELQ  
 GLLKMEDVAPGLSPRWTEQDSSQMNLKDEMVENSGSLVSLDENMQTKVRDLPPAEENTEQKPEQTVCF  
 GEDTVQIPTGTEASEQEGKLQTTQKNATGNRRFYCRECGKSFAQSSGLSKHKRIHTGLKPYECECGKAF  
 IGSSALI IHQVHTGEKPYECECGKAFSHSSDLIKHQRTHTGEKPYECDDCGKFTFTQSCSLEHHRHT  
 GEKPYQCNMCPKAFRRSSHLLRHQRHTHTGDKDFVPEPYWESQSRVESHWENIETPVSYQCNDCERSFSR  
 ITSLIEHQKVHTGEKPFECQTCGKGFTRPSYLIHQRRHTGKTSVTVTPAVHSEVGVQLSLN

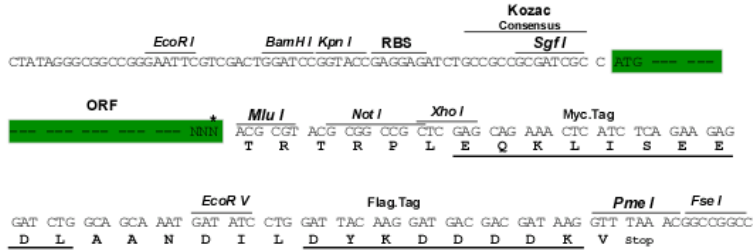
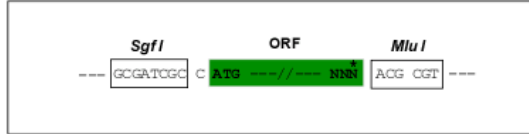
**TR**TRPLEQKLISEEDLAANDILDYKDDDDKV

**Restriction Sites:**

Sgfl-MluI

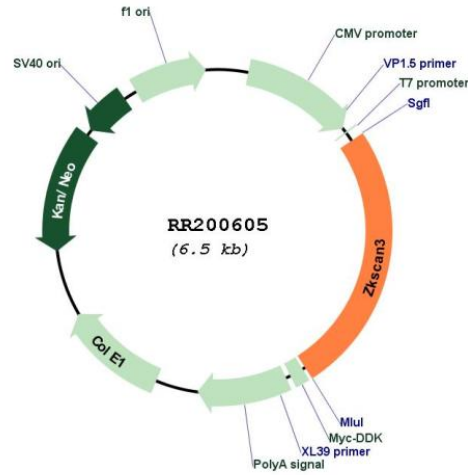
Cloning Scheme:

Cloning sites used for ORF Shutting:



\* The last codon before the Stop codon of the ORF

Plasmid Map:



<b>ACCN:</b>	NM_001012053
<b>ORF Size:</b>	1659 bp
<b>OTI Disclaimer:</b>	The molecular sequence of this clone aligns with the gene accession number as a point of reference only. However, individual transcript sequences of the same gene can differ through naturally occurring variations (e.g. polymorphisms), each with its own valid existence. This clone is substantially in agreement with the reference, but a complete review of all prevailing variants is recommended prior to use. <a href="#">More info</a>
<b>OTI Annotation:</b>	This clone was engineered to express the complete ORF with an expression tag. Expression varies depending on the nature of the gene.
<b>Components:</b>	The ORF clone is ion-exchange column purified and shipped in a 2D barcoded Matrix tube containing 10ug of transfection-ready, dried plasmid DNA (reconstitute with 100 ul of water).
<b>Reconstitution Method:</b>	<ol style="list-style-type: none"><li>1. Centrifuge at 5,000xg for 5min.</li><li>2. Carefully open the tube and add 100ul of sterile water to dissolve the DNA.</li><li>3. Close the tube and incubate for 10 minutes at room temperature.</li><li>4. Briefly vortex the tube and then do a quick spin (less than 5000xg) to concentrate the liquid at the bottom.</li><li>5. Store the suspended plasmid at -20°C. The DNA is stable for at least one year from date of shipping when stored at -20°C.</li></ol>
<b>RefSeq:</b>	<a href="#">NM_001012053.2</a> , <a href="#">NP_001012053.2</a>
<b>RefSeq Size:</b>	2588 bp
<b>RefSeq ORF:</b>	1662 bp
<b>Locus ID:</b>	306977
<b>Cytogenetics:</b>	17p11
<b>MW:</b>	62.7 kDa