

Product datasheet for **RR200590**

Acrv1 (NM_021747) Rat Tagged ORF Clone

Product data:

Product Type: Expression Plasmids
Product Name: Acrv1 (NM_021747) Rat Tagged ORF Clone
Tag: Myc-DDK
Symbol: Acrv1
Synonyms: Sp10
Mammalian Cell Selection: Neomycin
Vector: pCMV6-Entry (PS100001)
E. coli Selection: Kanamycin (25 ug/mL)
ORF Nucleotide Sequence: >RR200590 representing NM_021747
Red=Cloning site Blue=ORF Green=Tags(s)

TTTTGTAATACGACTCACTATAGGGCGGCCGGAATTCGTCGACTGGATCCGGTACCGAGGAGATCTGCC
GCC**CGGATCGCC**

ATGAAGGAGTTAATCTTACTGGGTCTTTATCTGCTTGGATCTTCCAGAGGAGCACCACCAGGTCAGCCAG
ATGAGCTTCTTGACTCTGTAGACCAAGCTTCTGTTTCAGCAACTTCAAGTGAGTATTTCTCACTTGCAAA
CCCTTCAGATGCCAAAGCTTTATGAAACTGCTTCAAGTGAGAAGACTCTGAGTGGTCATAGTTCAAGT
GAACACGAATCAAGCGAGCATACTGTAACCTGAACATTCTGCAGGTGAGCACTCTTCAGGAGAACAGTCTT
CAGAGCATATTTCAAGTGAGCACATGTCCAGGAGACCTGTGAGAACACTTCTGGGGAGCATGCTTC
TACCGAGCACACTTCCGGGGAGCACACTTCCGGGGAGCACACTTCAAGTGAACAACCTTACAACCTGAACAG
TCCTCAAGTGACCAGTCTTCTGATGTATCTTCAGGCGAACAAAGTTTCAGGTGAAAAGCTTGAAGAGGCAG
GTGAACAGGTGTCTGGCGAAGACAAAGGAAACGAAGTTATAAGTACACCCTTCCAAGCACGCTTTCAGG
TGGGATAATAAATTGCCACACATGTGCTTATATGAATGAAGATGCAAAATGTCTCCGTGGAGAAGGAATA
TGCACCACTCAAATCCAGCAGTGCATGTTAAAGAAGATCTATGAAGGTGAAAGCTCCAGTTTCATGG
TTCAAGGGTGTGAGAACATGTGCCATCTATGAACCTCTTCTCTCATGGAACAAGAATGCAAATATGTG
CTGTCGTCATGAAGCTCTCTGCAACAAGGCC

ACGCGTACGCGGCCGCTCGAGCAGAACTCATCTCAGAAGAGGATCTGGCAGCAAATGATATCCTGGATT
ACAAGGATGACGACGATAAGGTTTAA



[View online »](#)

Protein Sequence: >RR200590 representing NM_021747
Red=Cloning site Green=Tags(s)

MKELILLGLYLLGSSRGAPPQPDELLDSVDQASVQQLSSEYFSLANPSDAKALYETASSEKTL SGHSSS
 EHESSEHTVTEHSAGEHSSGEQSSEHISSEHMSGEHLSEHTS GEHASTEHTS GEHTSSEQLTTEQ
 SSSDQSSDVSSGEQVSGEKLEEAGEQVSGEDKGNEVISTPLPSTSSGGIINCHTCAYMNEDAKCLRGEGI
 CTTQNSQQCMLKKIYEGGKLQFMVQGCENMCP SMNLF SHGTRMQIMCCRHEALCNKA

TRTRPLEQKLISEEDLAANDILDYKDDDDKV

Restriction Sites: Sgfl-MluI

Cloning Scheme:

Cloning sites used for ORF Shuttling:



ACCN: NM_021747

ORF Size: 801 bp

OTI Disclaimer: The molecular sequence of this clone aligns with the gene accession number as a point of reference only. However, individual transcript sequences of the same gene can differ through naturally occurring variations (e.g. polymorphisms), each with its own valid existence. This clone is substantially in agreement with the reference, but a complete review of all prevailing variants is recommended prior to use. [More info](#)

OTI Annotation: This clone was engineered to express the complete ORF with an expression tag. Expression varies depending on the nature of the gene.

Components: The ORF clone is ion-exchange column purified and shipped in a 2D barcoded Matrix tube containing 10ug of transfection-ready, dried plasmid DNA (reconstitute with 100 ul of water).

Reconstitution Method:

1. Centrifuge at 5,000xg for 5min.
2. Carefully open the tube and add 100ul of sterile water to dissolve the DNA.
3. Close the tube and incubate for 10 minutes at room temperature.
4. Briefly vortex the tube and then do a quick spin (less than 5000xg) to concentrate the liquid at the bottom.
5. Store the suspended plasmid at -20°C. The DNA is stable for at least one year from date of shipping when stored at -20°C.

RefSeq: [NM_021747.1](#), [NP_068515.1](#)

RefSeq Size: 827 bp

RefSeq ORF: 804 bp

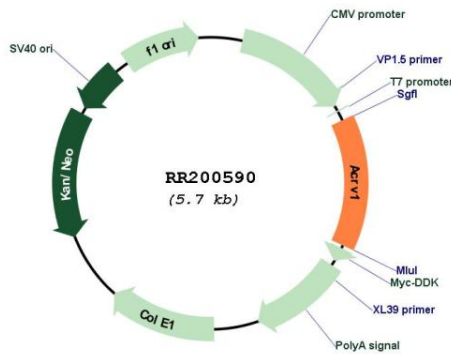
Locus ID: 60353

Cytogenetics: 8q21

MW: 28.6 kDa

Gene Summary: testis-specific differentiation antigen; associated with the acrosome of mature sperm; human homolog has been targeted for a potential contraceptive vaccine [RGD, Feb 2006]

Product images:



Circular map for RR200590