

Product datasheet for **RR200553**

Siglec1 (NM_001107777) Rat Tagged ORF Clone

Product data:

Product Type: Expression Plasmids
Product Name: Siglec1 (NM_001107777) Rat Tagged ORF Clone
Tag: Myc-DDK
Symbol: Siglec1
Synonyms: Sn
Vector: pCMV6-Entry (PS100001)
E. coli Selection: Kanamycin (25 ug/mL)
Cell Selection: Neomycin
ORF Nucleotide Sequence: >RR200553 representing NM_001107777
Red=Cloning site Blue=ORF Green=Tags(s)

TTTTGTAATACGACTCACTATAGGGCGCCGGAATTCGTCGACTGGATCCGGTACCGAGGAGATCTGCC
GCCGGATCGCC

ATGTGTGCCCTGCTCTCCTTGCTCCTGCTGGCCTCGGTCTTCACACCAGGCCAGACCACGTGGGGTGTCT
 CCAGTCCCAAGGATGTGCAGGGCTTGACTGGATCTTGCCTGCTCATTCCCTGCATCTTCAGTTCCTCTGC
 TGATGTATCAGTGCTAATGGCATCACAGCCATCTGGTACTATGACTACTCGGGCAAACGGCAGGTGGTA
 ATCCACTCAGGGGACCCCAAGCTGGTGGATGAGCGCTTCAGGGGCAGAGCTGAACTGACAGGGAACATGG
 ATCACAAGGTGTGCAACCTGTTGCTCAAAGACCTGAAGCTTGAAGACTCAGGCACCTACAACCTCCGCTT
 TGAGATCAGTGATGGCAACCGCTGGTCTGATGTGACAGGCACCACAGTCACTGTGACAAAGGATCCCACT
 CCCCCACTATTACCATCCACATGAGCTGCGTGAAGGTGTGGAGGTGAACGTCAACTGTTCCACACCCCT
 ACCTGTGCTGCAGGAGAAGCAGGTGAGCTGCATTGGCAAGGCCAGGACCCACCCGCTCCGTCATCTC
 CAACTCCAGAGCCTCGAGCCCACTGGCGTCTACCACCAGACGACCCTACATATGGCCCCATCCTGGCAG
 GACCACAGACGGACCCTGCGCTGCCAGTGTTCATTGGCCACGCACAGTAGTCAGAAAGAGGTTTATCTAC
 AAGTGCAGCATGCCCCAAAGGTGTGGAGATCCTCCTTAGCTCCTCAGGAAGGAACATCCTCCAGGGAA
 CCTGGTACGCTCACCTGCCGGTGAATAGCAGCTATCCTGCCGTCAGTTCTGTGGATTGGGTCAAGGAT
 GGAGTGAACCTCACAGCAAGGGGCATGTGCTCCAGCTATCCTCAGCAACCTGGAATGATTCTGGGGTCT
 ACACCTGTCAAGCAACAAATAATGTGGGCTCTCTGGCATCACCCCACTCAGCCTCCACGTTTTTATGGC
 TGAAGTCAAGATAAACCCAGCAGGGCCCATCTGGAAAATGAGACAGTGACACTCCTCTGTAGCACCCCC
 AAGGAGGCACCCAGGAGCTCCGCTACAGCTGGTACAAGAACAACATTCTTCTGGAAGACGCCCATGCC
 CAACCTTGACCTGCCTGCAGTACCAGGGCTGATACTGGCTTCTATTTCTGTGAGGTGCAGAACCCCA
 GGGCAGTGAGCGCTCCGGTCCAGTGAGTGTGGTGGTCAGATATCCACCTTACTCCAGACCTGACCACC
 TTCTTGGAGACACAGGCTGGACTTGTGGGCATCTCCATTGCTCTGTGATCAGCGAGCCCTGGCTACTG
 TGGTACTGTACACGGAGGTCTCACATTGGCCTCCAGCTCTGGAGAAAATGACTTCAACCCCGATTTCAG
 CATTCTCTGCCCCCACTCCGTGCGCTAGAAATCCGAGACTTGCAGCCAGCGGACAGCGGGGAGTAC
 ACATGCTCAGCCACCAACTCCCTTGAAAATCAATGTCCAGCCTAGACTTCCATGCAAAATGATCCCCCAA



GAAAGCTCACATTCACCTGCCAGGCTGGATTTGGATACCTCTGGAGACGGGGATGGACGGCGTGGCATCCT
 CTTGTGCCAAGTAGACAGTATCCCCAGCCAGCTACAGCTTCTCCACAAGGTCATGTTGTGGCCACT
 TCTCTGCCATCAATGTGTGGGAGCTGCTCTCGGCGCATGAAAGTCAGCAGAGCCTCCAACACTGCAGG
 TGGAGATCCAGAAGCCGGTACTAGAGGATGAGGGCATGTACCTGTGTGAGGCTAGCAACACACTGGGCAA
 CTCCTCTGTCTCAGCCTCTTTCAATGCTAAGGCTACTGTCGTGGTCATCACACCGTCAGATACACTGCTT
 GAAGGCACAGAAGCCAGCCTAATTGTAACGTGACCCAGGAGGTTGCCGTGAGCCTGCCAACTTTTCTT
 GGTTCCGGAATGGAGTGTGTGGACCCAGGGACCACTGGAGACTGTGAGGCTGACGCTCTGGCCAGGAC
 TGATGCTGCCGTCTATGCCTGCCGCTCCTCACTGACGATGGGGCCAGCTCTCGGCTCCTGTGGTCCTA
 AGTGTGCAGTATGCCCCAGACCTCCAAAGCTGTGAGCCCTCCTGGATGTGGGTGAGGGCCACATGGCTG
 TGTTCTATCTGCACTGTGGACAGCTATCCCTGGCTCACCTGTCTTATTCCGTGGGGAGCGCCTCCTGGC
 CACCAGCTTGAACCCAGCGTCTATCCCATGGTAGAATCCAGGCCAAGGCCACAGCCAACCTCCTGCGAG
 CTAGAGGTCGGGAACTAGGCTTGAAGACTCTGGAACTACCACTGTGAAGCCACAAATGTTCTTGAT
 CAGCCAACAGTTCACCTCTTCCAGGTCAGAGGAGCCTGGGTCCAGGTTTCGCCATCACCTGAGCTCCG
 AGAGGGCCAGGCTGTGGTCTGAGCTGCCAGGTGCCACAGGGGTGCCTGAGGGAACCTCATAACCGTGG
 TTTCCAGGATGGCCGCCCTCCAGGAGTCAACCTCATCTATATTGCGCATTGCAGCCATAAGTCTGAGGC
 AAGCTGGTGCCTACCATTTGCCAAGCTCAGGCTCCAGACACAGCTGACGCCAGCCTGGCTGCCCTGTGAG
 CCTCCATGTGCTTATACCCACGTCACGTGACACTCAGCGCCCTGCTGAGCACGGGCCCTGGGCGATAC
 GGCCACCTGGTGTGACGTGCACAAAGTGACCTCCAGCTCTGCTGCGACTGTTCCACCAGAATCGCCTCG
 TGGCCTTACCCTACAAGGCCGGAGGAATTGGCAAGCAGTAATCCCGGCTGCATGTGGCTGTGAGCTC
 CAATGAGTTGCGCCTGGAGATCCAATTCACAGAGCTGGAGGATGGTGGGACCTACACATGTGAAGCCACC
 AACACACTGGGCCAGGCATCTGCTACAGCTGACTTCGATGCCAGGCTGTGCGTGTGGCCGTGTGGCCCA
 ATGCCACTGTGCAAGAGGGGCAGCAGGTGAACCTCAGCTGCTTGGCGTGGAGCACCCACAGGACTCACT
 CAGCTACACATGGTACAAGGGCGGCCAACAACTGCTTGGTGTGAGTCCATCTCCCTGCCAGCGTTACA
 GTTTCCGATGCTACCTCCTACCCTGCGGTGTGGGGCTCCTGGCCACACACCCCATCTCTCCAGAGCTG
 TGACCCTGGATGTCTCTACGCTCCCCGAAGCCTGCAGCTGACCTACCTCCTGGAGAGCCAGGGCCGGCG
 GCTGGCCCTGGTACTGTGTACTGTGGATAGTCGCCACCTGCCAGCTAACTCTCAGCCACGGTGGCCAG
 CTCCTAGCCTCCTCACTGAAGCTTCCGTCCCCAACACCTGCGCCTAGAGCTTCAGGACCCGAAGCCCA
 GTGATGAGGGGCTCTACAGCTGCTCTGCCAGAGCCACTGGGCAAGGTCAACACATCCCTGGCGCTTCG
 GCTGGAAGGTGTACGAGTGAGGATGAATCCCTCTGCTACTGTACCCGAGGGGGAGCCTGTACAGTGACC
 TGCGAGGACCCTGCTGCCCTCTCACCTGCACTCTATGCCTGGTTTACAATGGCCATTGGCTTCAGGAGG
 GACCAGCTTCGTCACCTCCAGTTCACAGTGACGACACAGGCTCATGCTGGCGCTTACTTTTGGCAGGTGCA
 TGATACTCAGGGCAGCGGAGCTCCAGACTGCCAGCCTGCAAAATCTCTATGCCCCCGGGATGCTGTC
 CTGCTTCTCCTCCAGACTCCAGGACCAGGCACATGGTCTGATTGAGTGCACCGTGGACAGTGAACCAC
 CTGCTGAGCTGGTTCTCTCCCGAAACAGCAAGGTGCTAGCTGCCAGCCGTGAGCTTCACAGCTCAGCACC
 CGGGATAAGCCACGTCCAGGCAGCCCGGAATGCTCTTCCACTACAGGTGCAAGACACGACTTTTGGTGAT
 GGCAACACTTACGTTTGCACAGCCCGGAATACACTGGGCTCCATCAGTACCACCCACAAGCTTCTGAGGG
 AGACTGATATACATGTGACAGCTGAGCCAGGCTGGATGTGCCAGAGGGCACAGCTCTAACCTGAGCTG
 CCACCTCCCGGTGGCTCCAGCCTGTGGGCAACTCTTCTTACGTTGGTCTGGAATCGCCATCTCCTA
 CATTGAGCTCCTGTGCCACACTCTCCTCACCCCTGTGGTCCGGGCTCAGGCTGGTCTGACCACTGCA
 GGGCTGAGCTCTCACTGGGTTACTACCTCACCTCCCGTCATGCTCCGTGCTCTATCCTCCCAAGAC
 TCCCACTCTCACAGTGTGTGGAACTCAGGGTGGCCATCAGGGCATCCTCGACTGTGAGTGGACAGT
 GAGCCCTGGCCAGTCTACCCTCCAGCTGGGCAGTCAACTAGTAGCTTCTAACCAACCGCACAGCGCTC
 CCACCCAGCCACATCCGAGTCACTGCTCCTCCCAATGCCTTGAGACTGGACATAGAGGAGCTCGGACC
 TAACAATCAAGGGGAGTATGTGTGCACAGCCTCCAACGCTCTGGGCTCTGCCTCAGCCTCAGCCTACTTT
 GGGACCAGAGCCCTGCAGCAGCTGCAGCTGTTCCAGAGGCTGCTCTGGGTCTGGGATTTCTGGCAGGCT
 TCCTGGGCTGCTGCTGGGCTAGGGCCTGTTACAGCTGGAGAAAGAAGATTCTAGCAAACCTGAATGT
 GAATGAGAATTCAGCAGAGATGACCACTCAGAAAGATAATATCCAGGAGGAGACGTTGCTGCTGTC

ACGCGTACGCGGCCGCTCGAGCAGAACTCATCTCAGAAGAGGATCTGGCAGCAAATGATATCCTGGATT
 ACAAGGATGACGACGATAAGGTTTAA

Protein Sequence: >RR200553 representing NM_001107777
 Red=Cloning site Green=Tags(s)

```

MCALLSLLLLASVFTPGQTTWGVSSPKDVQGLTGSCLLIPCIFSFADVSVPNGITAIWYDYSGKRQVV
IHSGDPKLVDERFRGRAELTGNMDHKVCNLLKDLKLEDSGTYNFRFEISDGNRWSDVRGTTVTVKDPS
PPTITIPHELREGVEVNVNCSTPYLCLQEKQVSLHWQGDPTRSVISNFQSLQPTGVYHQTLHMPSWQ
DHRRTLRCQLSLATHSSQKEVYLQVQHAPKQVEILLSSSGRNILPGNLVTLTCRVNSSYPVSSVDWVKD
GVNLTAKGHVLQLSSATWNDSGVYTCQATNNGVSLASPLSLHVFMAEVKINPAGPILENETVTLLCSTP
KEAPQELRYSWYKNNILLEDAHAPTLHLPVTRADTGFYFCEVQNTQGSERSGPVSVVVRYPPLTPDLTT
FLETQAGLVGIFHCSVISEPLATVVLSHGGLTLASSSGENDFNPRFSISSAPNSVRLEIRDLQPADSGEY
TCSATNSLGKSMSSLDHFHANDPPRKLTFARLDLDTSGDGDGRRGILLCQVSDPPAQLQLLHKGHVVAT
SLPSMCGSCSRMKVSRASNSLQVEIQKPVLEDEGMYLCEASNTLGNSSVSASFNAKATVVVITPSDTLL
EGTEASLTCNVTQEVAVSPANFSWFRNGVLWTQGPLETVRLQPLARTDAAVYACRLLTDDGAQLSAPVVL
SVQYAPDPPKLSALLDVGQGHMAVFICTVDSYPLAHLSLFRGERLLATSLEPQRLSHGRIQAKATANSLQ
LEVRELGLEDSGNHCEATNVLGSANSSLFFQVRGAWVQVSPPELREGQAVVLSQVPTGVPEGTSYRW
FQDGRPLQESTSSILRIAASLRLQAGAYHCQAQAPDTAAASLAAPVSLHVSYPTRHVTLALLSTGPGRY
GHLVCSAQSDPPALLRLFHQNRLLVASTLQGPPELASSNPRLHVAVSSNELRLEIQFTELEDGGTYCEAT
NTLQGASATADFDAQAVRVAVWPNAVTEGQQVNLSCLAWSTHQDSLSTYTWYKGGQQLLGVRSISLPSVT
VSDATSYRCGVLPGHTPHLSRPVTLVLYAPRSLQLTYLLESQGRRLALVLCVDSRPPAQLTLSHGGQ
LLASSTEASVPNTLRLELQDPKPSDEGLYSCSAQSPLGKVNLSLALRLEGVVRVMNPSATVPEGEPVTVT
CEDPAALSPALYAWFHNGHWLQEGPASSLQFPVTTQAHAGAYFCQVHDTQGRSSRPASLQILYAPRDAV
LSSFRDSRTRHMVVIQCTVDSEPPAELVLSRNKVLAAARELHSSAPGISHVQAARNALRLQVQDTTFGD
GNTYVCTARNTLGSISTHKLRLRETDIHVTAEPGLDVPEGTALNLSCHLPGGSQPVGNSSFTWFVNRHLL
HSAPVPTLSFTPVVRAQAGSYHCRAELSTGVTTSPVMRLRVLYPPKTPTLTVFVEPQGGHQGLDCRVDS
EPLASLTLQLGSQLVASNQPHSAPTQPHIRVTAPPNALRLDIEELGPNNQGEYVCTASNALGSASAYF
GTRALQQLQLFQRLWLWLGFLAGFLGLLGLGACYSWRKKNSKLNVNENSAEMTTQKDNIQEETVAAV
  
```

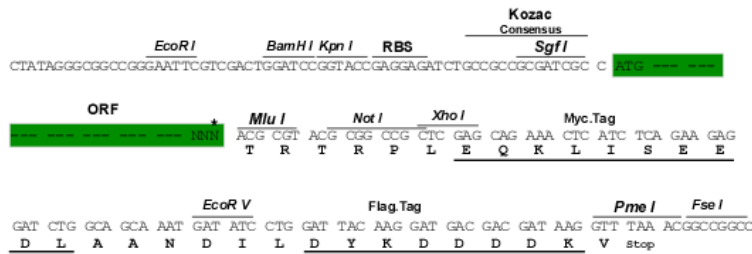
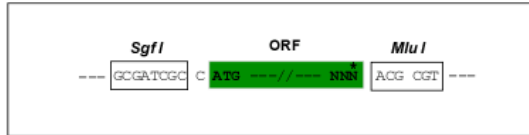
TRTRPLEQKLISEEDLAANDILDYKDDDDKV

Restriction Sites:

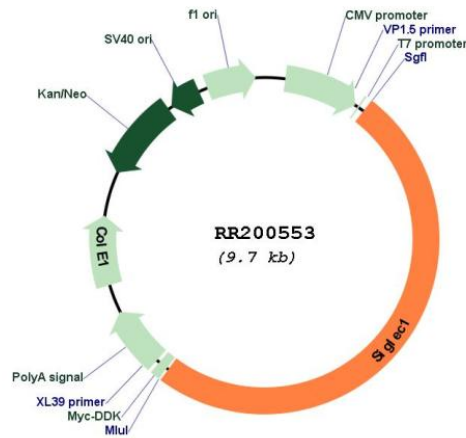
SgfI-MluI

Cloning Scheme:

Cloning sites used for ORF Shuttling:



Plasmid Map:



ACCN: NM_001107777

ORF Size: 4827 bp

OTI Disclaimer: The molecular sequence of this clone aligns with the gene accession number as a point of reference only. However, individual transcript sequences of the same gene can differ through naturally occurring variations (e.g. polymorphisms), each with its own valid existence. This clone is substantially in agreement with the reference, but a complete review of all prevailing variants is recommended prior to use. [More info](#)

OTI Annotation: This clone was engineered to express the complete ORF with an expression tag. Expression varies depending on the nature of the gene.

Components: The ORF clone is ion-exchange column purified and shipped in a 2D barcoded Matrix tube containing 10ug of transfection-ready, dried plasmid DNA (reconstitute with 100 ul of water).

Reconstitution Method:

1. Centrifuge at 5,000xg for 5min.
2. Carefully open the tube and add 100ul of sterile water to dissolve the DNA.
3. Close the tube and incubate for 10 minutes at room temperature.
4. Briefly vortex the tube and then do a quick spin (less than 5000xg) to concentrate the liquid at the bottom.
5. Store the suspended plasmid at -20°C. The DNA is stable for at least one year from date of shipping when stored at -20°C.

RefSeq: [NM_001107777.1](#), [NP_001101247.1](#)

RefSeq Size: 6671 bp
RefSeq ORF: 4830 bp
Locus ID: 311426
Cytogenetics: 3q36
MW: 173.7 kDa