

Product datasheet for **RR200516**

Gls (NM_001109968) Rat Tagged ORF Clone

Product data:

Product Type:	Expression Plasmids
Product Name:	Gls (NM_001109968) Rat Tagged ORF Clone
Tag:	Myc-DDK
Symbol:	Gls
Synonyms:	Glut; RATGLUT
Vector:	pCMV6-Entry (PS100001)
E. coli Selection:	Kanamycin (25 ug/mL)
Cell Selection:	Neomycin



[View online »](#)

ORF Nucleotide Sequence:

>RR200516 representing NM_001109968
 Red=Cloning site Blue=ORF Green=Tags(s)
 TTTTGTAAACGACTCACTATAGGGCGGCCGGGAATTCGTCGACTGGATCCGGTACCGAGGAGATCTGCC
 GCC**CGGATCGCC**

ATGATGCGGCTGCGAGGCTCGGCGATGCTGCGGGAGCTGCTCTTGAGCCGCCTGCCCGCTCGGAGGCG
 TCTTGC GCGCGCGCAGCCCTCGGTACGCTGTGCCGGCGCCCCGGGGCGGGAGCCGGCCGGCCGCTGG
 CCTGGTGGCCGCTGCGGACTCCACCCGTGGTGGGGCGGGGGCGGCCGCGCAAGGGCCCCGGGCTCGGGC
 GGCCTGTCCAGCTCGCCCTCGGAGATCCTGCAGGAGCTGGGCAAGGGGGGCACGCCGCCACAGCAGCAGC
 AGCAGCAGCAGCAGCAGCCAGGGGCGTCCGCCACCCGACGCCCCGGGCCCAAGGACAGCCGGGGGAGAC
 GGACGCGTTTCGGCAACAGCGAAGGCAAGGAGATGGTGGCTGCGGGCGACAATAAAGTAAAGCAGGGTCTG
 TTACCTAGCTTGAAGATTTGCTGTTCTATAACAATTGCAGAAGGACAAGAAAAGATACCTGTTCAACAAGT
 TTATTACAGCACTCAAACTACAGGATTGCGAACATCTGATCCCAGGTTGAAAGAGTGTATGGATATGTT
 AAGATTAACCTTCAGACAACGTGAGTGGTGTATGCTAGACAAAGATCTTTTTAAAAAGTGTGTTCAA
 AGCAACATCGTTTTGTTAACACAAGCATTAGAGAAGAAAGTTTGTATCCCTGACTTTATGCTTTTTACCT
 CACACATCGATGAGTTATATGAAAGTGCTAAAAAGCAGTCTGGAGGGAAGGTTGCTGATTATATTCCTCA
 ACTGGCCAAATTCAGTCTGATTTGTGGGGTGTATCTGTTGTACCGTAGATGGGCAAAGGCATTCTATT
 GGAGATACCAAAGTCCCTTTTGTCTTCAGTCTGTGTAAGCCCTGAAATATGCAATTGCTGTCAATG
 ACCTGGGAAGTGAATGTGCATCGCTATGTTGGGAAGGAGCCAAAGTGGATTAAGATTCAACAAGCTCTT
 TTTGAATGAAGATGATAAACCACATAATCCGATGGTAAATGCTGGAGCAATTGTTGTGACTTCACTAATA
 AAGCAAGGAGTAAATAATGCTGAGAAATTTGACTATGTGATGCAATTTTTGAATAAGATGGTGGTAATG
 AATATGTCCGATTCAGTAAATGCAACGTTCAACTGAACGAGAAAGTGGAGACCGAAATTTTGAATAGG
 ATATTACTTAAAAGAAAAGAAGTGTTCAGAAAGGCACAGACATGGTTGGGATACTAGATTTTTTATTTTC
 CAGCTCTGTTCCATTGAAGTGACGTGTGAGTCAGCAAGTGTGATGGCTGCAACCTTGCTAATGGCGGTT
 TCTGCCAATTACTGGTGAAGAGTGCTCAGTCTGAGGCCGTTCCGAAATACCCTGAGCTAATGCACTC
 CTGTGGCATGTATGACTTCTCAGGGCAGTTTGCATTTTCATGTTGGTCTTCTGCAAAATCTGGAGTTGCT
 GGGGGTATTCTTTAGTTGTCCCAACGTCATGGGCATGATGTGTTGGTCTCCTCCTCTTGACAAGATGG
 GCAACAGTGTTAAAGGAATTCACCTTTGTCACGATCTGTTTCTCTGTGTAACCTCCATAACTATGATAA
 TTTGAGACACTTTGCAAAAAAATTTGATCCTCGGAGAGAAGGAGGTGATCAAAGGCATTCCTTTGGACCA
 TTGGACTATGAGAGTCTCCAGCAAGAATTTGCTTTAAAAGACACAGTGTGAAAAAAGTGTACCTGAGT
 CAAGTGACGACACGCTACAACATAGTGTATAGAATGAAAGTCTGGGGGAGAGGAGC

AG**CGGACCG**ACGCGTACGCGGCCGCTCGAGCAGAACTCATCTCAGAAGAGGATCTGGCAGCAAATGATATCC
 TGGATTACAAGGATGACGACGATAAGGTTTAA

Protein Sequence:

>RR200516 representing NM_001109968
 Red=Cloning site Green=Tags(s)

MMRLRGSAMLELLL RPPAAVGGVLRRAQPLGTL CRRPRGSRPAAGLVAAARLHPWWGGGRAKGPGSG
 GLSSSPSEILQELGKGGTPPQQQQQQQPGASPPAAPGPKDSPGETDAFGNSEGKEMVAAGDNKVKQGL
 LPSLEDLLFYTIAEGQEKIPVHKFITALKSTGLRTSDPRLKECMDMLRLTLQTTSDGVMLDKDLFKKCVQ
 SNIVLLTQAFRRKFVIPDFMSFTSHIDELYESAKKQSGGKVADYIPQLAKFSPDLWGVSVCTVDGQRHSI
 GDTKVPFCLQSCVKPLKYAIAVNDLGT EYVHRYVVGKEPSGLRFNKLFLNEDDKPHNPMVNAGAIIVTSLI
 KQGVNNAEKFDYVMQFLNKMAGNEYVGFSNATFQSERESGDRNFAIGYYLKEKKCFPEGTDMVGI LDFYF
 QLCSEIVTCESASVMAATLANGGFCPITGERVLSPEAVRNTLSLMHSCGMYDFSGQFAFHVGLPAKSGVA
 GGILLVVPNVMGMMCWSPPLDKMGNVSGIHFCHDLVSLCNFHNYDNL RHF AKKLDPRREGGDQRHSFPG
 LDYESLQQELALKD TVWKKVSPESDDTSTTIVRMESL GERS

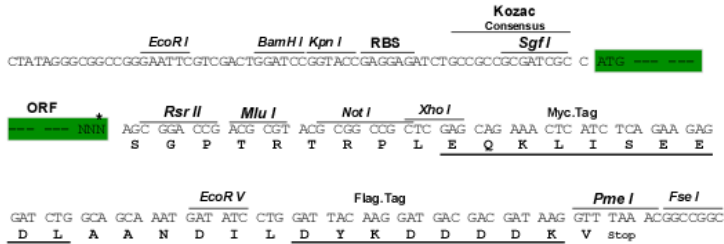
SGP**TRTRPLEQKLI**SEEDLAANDILDYKDDDDKV

Restriction Sites:

Sgfl-RsrII

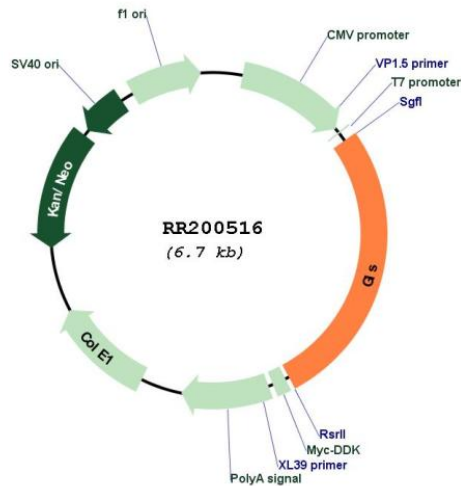
Cloning Scheme:

Cloning sites used for ORF Shuttling:



* The last codon before the Stop codon of the ORF

Plasmid Map:



ACCN: NM_001109968

ORF Size: 1809 bp

OTI Disclaimer:	The molecular sequence of this clone aligns with the gene accession number as a point of reference only. However, individual transcript sequences of the same gene can differ through naturally occurring variations (e.g. polymorphisms), each with its own valid existence. This clone is substantially in agreement with the reference, but a complete review of all prevailing variants is recommended prior to use. More info
OTI Annotation:	This clone was engineered to express the complete ORF with an expression tag. Expression varies depending on the nature of the gene.
Components:	The ORF clone is ion-exchange column purified and shipped in a 2D barcoded Matrix tube containing 10ug of transfection-ready, dried plasmid DNA (reconstitute with 100 ul of water).
Reconstitution Method:	<ol style="list-style-type: none">1. Centrifuge at 5,000xg for 5min.2. Carefully open the tube and add 100ul of sterile water to dissolve the DNA.3. Close the tube and incubate for 10 minutes at room temperature.4. Briefly vortex the tube and then do a quick spin (less than 5000xg) to concentrate the liquid at the bottom.5. Store the suspended plasmid at -20°C. The DNA is stable for at least one year from date of shipping when stored at -20°C.
RefSeq:	NM_001109968.1 , NP_001103438.1
RefSeq Size:	4219 bp
RefSeq ORF:	1812 bp
Locus ID:	24398
UniProt ID:	P13264
Cytogenetics:	9q22
MW:	66 kDa
Gene Summary:	catalyzes the conversion of L-glutamine and H ₂ O to L-glutamate and NH ₃ in glutamine catabolism [RGD, Feb 2006]