

## Product datasheet for **RR200487**

### Ptprc (NM\_001109890) Rat Tagged ORF Clone

#### Product data:

Product Type:	Expression Plasmids
Product Name:	Ptprc (NM_001109890) Rat Tagged ORF Clone
Tag:	Myc-DDK
Symbol:	Ptprc
Synonyms:	CD45; L-CA; Lca; RT7; T200
Vector:	pCMV6-Entry (PS100001)
E. coli Selection:	Kanamycin (25 ug/mL)
Cell Selection:	Neomycin
ORF Nucleotide Sequence:	>RR200487 representing NM_001109890 Red=Cloning site Blue=ORF Green=Tags(s)

TTTTGTAATACGACTCACTATAGGGCGGCCGGAATTCGTCGACTGGATCCGGTACCGAGGAGATCTGCC  
GCC**GCGATCGCC**

ATGTATTTGTGGCTCAAACCTTCTGGCCTTCAGCTTGGCCCTTCTCGGCCCAGAAGTCTTTGTCACAGGGC  
AAGGAACAACCGACGATGGTCCAACCTCACACCCTGCACCATCCACTCTGGGCTTTGCAAGCAATAC  
CACCACAAGCACAGAAATAGCTACCCCTCAAACGAAGCCATCATGTGATGAAAAATTTGGGAACGTTACT  
GTGCGTTACATCTATGATGACAGTAGTAAGAATTTAACGCAAACCTAGAAGGTGACAAAAACCTAAGT  
GTGAATATACGGATTGTGAAAAAGAGTTAAAAATCTACCAGAATGCTCACAGAAAAACGTCACCTCTCTC  
CAATGGCTCATGTACTCCAGATAAAATTAATAATTTAGATGTACCACCAGGGACTCACAACCTTAACTTA  
ACAAAACGCACACCAGACATAGAAGCTAATACCTCAATTTGTTTGGAGTGGAAAAATAAAAACAAATTTA  
CCTGCGCATTCAAAGATTTTCATACAATTTCCGTTGTACACCAGAGATGAAAACATTTGCTTTGGACAA  
ACACGGAACACTTTGGTTACACAACCTTACAGTCCGAACAATTACACATGTGCTGCGGAAGTCCCTCTAC  
AATAACGTAATACTTTTAAAAACAAGACAGAAGGGTGCAGACTGATTTTGGGACTCCAGAAATGCTTCCCC  
ATGTTCAATGTAAGAATCAACTAACAGCACAAACATTAGTCTCCTGGGCTGAGCCAGCATCTAAACACCA  
TGGATACATTTTATGCTATAAAAAAGACCCCTTCAGAAAAATGTGAAAAATTTGGCTAATGATGTGAACAGT  
TTTGAGGTGAAAAACCTGAGGCCTTATACAGAGTACACAGTGTCTCTATTTGCCTATGTTATTGGGAGGG  
TGCAACGAAATGGCCCTGCTAAGGATTGCAACTTTTCGACAAAAGCAGCTCGTCCAGGCAAAGTCAATGG  
TATGAAAACCTCCCGGCGTCAGACAATAGTATAAATGTCACGTGTAATTTCTCTTATGAAATTAATGGC  
CCTGAAGCGCTTACATTTTGAAGTCAAAGTGGAGGTTCTTTAGTTAAAACTTTCAACCAATCCACAT  
GTAATTTGTTGTAGACAATCTCTATTATTCAACTGACTATGAGTTTCTGGTCTATTTTTACAATGGAGA  
GTACCTGGGAGACCCAGAAATAAACCTCAATCAACATCTATAATTCTAAAGCACTGATTATATTCCTG  
GTGTTTCTGATTATTGTGACATCAATAGCCCTGCTTGTGTTTGTATAAAATCTATGATCTGCGTAAGA  
AAAGATCCAGCAATTTAGATGAACAGCAGGAACCTGTTGAAAGGGATGAGGAGAAGCAGCTGATAAATGT  
GGACCAATTCATTCTGACCTTTTGTGGAAACATACAAAAGAAAGATTGCCGATGAGGGTAGACTGTTC  
CTGGCTGAATTTAGAGCATTCCACGGGTATTCAGCAAGTTTCCCATCAAAGATGCCGAAAGTCCCAAA



[View online »](#)

ACCAGAACAAAAACCGTTATGTGGACATTCTCCCCTATGATTACAACCGTGTGGAGCTCTCTGAAATAAA  
 TGGAGACGCAGGGTCCACCTACATAAATGCCAGCTACATTGATGGCTTCAAGGAACCCAGGAAATACATT  
 GCTGCACAAGGGCCCCGGGATGAGACAGTTGATGACTTCTGGAAGATGATCTGGGAGCAGAAGGCCACAG  
 TTATTGTCATGGTCACACGATGTGAAGAAGAAACAGGAACAAGTGTGCAGAATATTGGCCATGCATGGA  
 GGAAGGCACTCGGACTTTCAGAGATGTTGTCGTGACGATCAATGACCACAACGATGTCTGTATTACATT  
 ATCCAGAAGCTGAGCATTGCCACAAAAAAGAAAAAGCAACTGGAAGAGAAGTACTCATATTCAATTCA  
 CCAGTTGGCCAGACCATGGGGTCTCTGAAGCCCTCACCTGCTCTGAACTTCGACGGAGTTAATGC  
 TTTTAGCAACTTCTCAGTGGACCCATTGTTGGTCACTGCACTGCTGGCGTTGGGCGTACAGGCACCTAC  
 ATTGGAATTGATGCCATGCTCGAAAGCCTAGAAGCAGAGGGCAAAGTGGATGCTATGGCTATGTTGTCA  
 ACCTAAGGCGACAGAGATGTCTGATGGTCAAGTGGAGGCCAGTACATCCTGATCCATCAGGCCTTAGT  
 GGAGTACAATCAATTTGGGGAACAGAAGTGAAGTGTCTGAGTTACATTCATGTCTACAGAATCTGAAG  
 AAGAGAGATCCACCCAGTGACCCGTCTCCTTTGGAGGCTGAGTACCAGAGACTTCTTTCATACAGGAGCT  
 GGAGGACACAGCACATTGGAATCAAGAAGAAAAAAGAAAAAGAAACAGGAGTTCTAACGTTGTTCCATA  
 TGACTTTAACAGAGTGCCACTTAAGCATGAACTAGAGATGAGCAAAGAGAGCGAGGCTGAATCCGACGAA  
 TCTTCAGATGAGGACAGTACTCGGAAGAAACCAGCAAATACATTAATGCGTCATTTGTGATGAGTTACT  
 GGAACACAGAAATGATGATTGCTGCCAGGGTCCACTAAAAGAGACTATTGGTGACTTTTGGCAGATGAT  
 ATTCAAAAGAAAAGTCAAGGTTATTGTGATGTTGACAGAGTTAATGAGTGGAGACCAGGAAGTCTGTGCT  
 CAATACTGGGGAAGGAAAGCAGACTTATGGAGACATGGAAGTAAATGTTGAAAGACACGAACAAATCCT  
 CAGCCTATATTCTGCGAGCATTGAACTGAGACATTCAGAGAAAGGAGCCTAGAACTGTGTACCAGTA  
 CCAGTGTACCACATGGAAGGGGAGGAGCTCCCTGCAGAACCCAAAGATCTAGTGACTCTGATTCAGAAC  
 ATCAAACAGAAGCTTCCAAGAGTGGCTCAGAAGGGATGAAGTACCACAAGCATGCATCAATCCTAGTCC  
 ACTGCAGGGATGGATCCCAGCAGACGGGGTGTCTGTGCTCTGTTCAATCTCTGGAAAGTGCAGAAAC  
 AGAAGATGTGGTTGATGTTTTTCAAGTGGTAAAGTCTCTACGAAAGCACGGCCGGGGATGGTGGCCAGC  
 TTTGAGCAATACCAGTTCCTCTATGACATCATGGCCAGCATCTATCCACCCAGAATGGACAAGTGAAGA  
 AAGCAAACAGCCAAAGACAAAATTGAATTCATAACGAAGTGGACGGAGCCAAAGCAGGACGCAAACCTGTG  
 TCAGCCAGCTGATCCTCTGAACAAAGCCAGGAAGACAGCAAAGAAGTTGGAGCTTCAGAGCCTGCAAGT  
 GGTCTGAGGAGCCAGAACATTCTGCAATGGTCCATGAGCCAGCTCTAACCCCGAGCTCA

ACGCGTACGCGGCCGCTCGAGCAGAACTCATCTCAGAAGAGGATCTGGCAGCAATGATATCCTGGATT  
 ACAAGGATGACGACGATAAGGTTTAA

**Protein Sequence:**

>RR200487 representing NM\_001109890  
 Red=Cloning site Green=Tags(s)

MYLWLKLLAFSLALLGPEVFTVQGGTDDGANLTPAPSTLGFASNTTSTETIATPQTKPSCDEKFGNVT  
 VRYIYDSSKNFNANLEGDKKPKCEYTDCEKELKNLPECSQKNVLSNGSCTPDKIINLDVPPGTHNFNL  
 TNCTPDIEANTSICLEWKIKNKFCDIQKISYNFRCTPEMKTALDKHGLWLHNLVTRNTYTCAAELVY  
 NNVILLKQDRRVQTDFTPEMLPHVQCKNSTNSTLLVSWAEPASKHHGYILCYKKTPEKCNLANDVNS  
 FEVKNLRPYTEYTVSLFAYVIGRVRNGPAKDCNFRTKAARPGKVNGMKTSRASDNSINVCNSPYEING  
 PEARYILEVKSGLVKTFFNQSTCKFVVDNLYYSTDYEFVYFYNGEYLDGPEIKPQSTS YNSKALIIIFL  
 VFLIIVTSIALLVLYKIYDLRKRSSNLDEQELVERDEEKQLINVDP.IHSDLLLETYKRKIADEGRFL  
 LAEFQSIPIRVFSKFPKIDARKSQNKRNRYVDILPYDYNRVELSEINGDAGSTYINASYIDGFKPRKYI  
 AAQGPREDTVDFFWKMIWEQKATVIMVTRCEEGRNKCAYWPCMEEGTRTRFRDVVVTINDHKRCPDYI  
 IQKLSIAHKKEKATGREVTHIQFTSWPDHGVPEPHELLLKRNRVNAF SNFFSGPIVVHCSAGVGRGTGY  
 IGIDAMLESLEAGKVDVYGYVNLRRQRCLMVQVEAQYILIHQALVEYNQFGETEVNLSLHSCQLNKL  
 KRDPSPSPLEAEYQRLPSYRSWRTQHIQNEENKKNRSSNVVPYDFNRVPLKHELEMSKESEAESDE  
 SDEDSSEETSKYINASFVMSYWKPEMMIAAQGPLKETIGDFWQMI FQRKVKVI VMLTEMSGDQEVCA  
 QYWGEQTYGDMVMLKDTNKSAYILRAFELRHSKRKEPRTVYQYQCTTWKGEELPAEPKDLVTLIQN  
 IKQKLPKSGSEGMYHKHASILVHCRDGSQQTGLFCALFNLLESAETEDVVDVVFQVVKSLRKARPGMVG  
 FEQYQFLYDIMASITYPTQNGQVKKANSQDKIEFHNEVDGAKQDANCVQPADPLNKAQEDSKEVGASEPAS  
 GSEPEHSANGPMPALTPSS

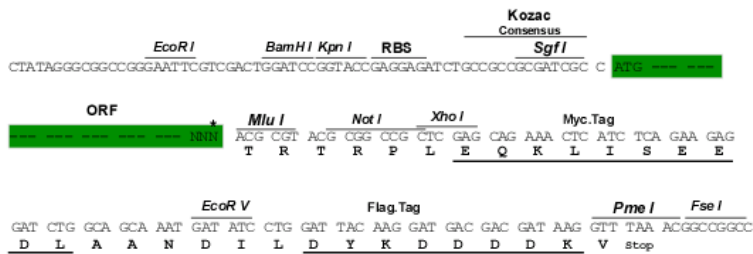
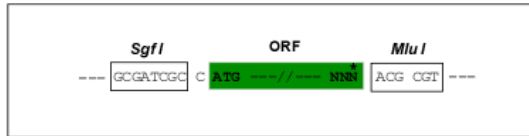
TRTRPLEQKLISEEDLAANDILDYKDDDDKV

Restriction Sites:

Sgfl-MluI

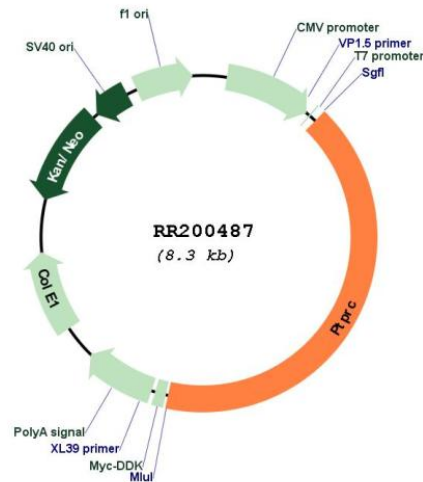
Cloning Scheme:

Cloning sites used for ORF Shuttling:



\* The last codon before the Stop codon of the ORF

## Plasmid Map:



ACCN: NM\_001109890

ORF Size: 3423 bp

OTI Disclaimer: The molecular sequence of this clone aligns with the gene accession number as a point of reference only. However, individual transcript sequences of the same gene can differ through naturally occurring variations (e.g. polymorphisms), each with its own valid existence. This clone is substantially in agreement with the reference, but a complete review of all prevailing variants is recommended prior to use. [More info](#)

OTI Annotation: This clone was engineered to express the complete ORF with an expression tag. Expression varies depending on the nature of the gene.

Components: The ORF clone is ion-exchange column purified and shipped in a 2D barcoded Matrix tube containing 10ug of transfection-ready, dried plasmid DNA (reconstitute with 100 ul of water).

Reconstitution Method:

1. Centrifuge at 5,000xg for 5min.
2. Carefully open the tube and add 100ul of sterile water to dissolve the DNA.
3. Close the tube and incubate for 10 minutes at room temperature.
4. Briefly vortex the tube and then do a quick spin (less than 5000xg) to concentrate the liquid at the bottom.
5. Store the suspended plasmid at -20°C. The DNA is stable for at least one year from date of shipping when stored at -20°C.

RefSeq: [NM\\_001109890.2](#)

RefSeq Size: 4671 bp

RefSeq ORF: 3426 bp

Locus ID: 24699

UniProt ID: [P04157](#)

Cytogenetics: 13q13

**MW:** 129.7 kDa

**Gene Summary:** member of a family of heavily glycosylated leukocyte cell surface glycoproteins; displays extensive O-glycosylation [RGD, Feb 2006]