

Product datasheet for **RR200453**

Fgfr2 (NM_001109892) Rat Tagged ORF Clone

Product data:

Product Type:	Expression Plasmids
Product Name:	Fgfr2 (NM_001109892) Rat Tagged ORF Clone
Tag:	Myc-DDK
Symbol:	Fgfr2
Mammalian Cell Selection:	Neomycin
Vector:	pCMV6-Entry (PS100001)
E. coli Selection:	Kanamycin (25 ug/mL)



[View online »](#)

ORF Nucleotide Sequence:

>RR200453 representing NM_001109892
 Red=Cloning site Blue=ORF Green=Tags(s)

TTTTGTAATACGACTCACTATAGGGCGGCCGGGAATTCGTCGACTGGATCCGGTACCGAGGAGATCTGCC
 GCC**CGGATCGCC**

ATGGGATTACCGTCCACATGGAGATATGGAACAGGACCAGGGATTGGCACCGTGACCATGGTCAGCTGGG
 GCGCTTCATCTGCCTGGTCTTGGTCACCATGGCAACCTTGTCCCTGGCCCGGCCCTCCTTCAGTTTAGT
 TGAAGATAACACTTTAGAACAGAGCCACCAACAAATACAAATCTCCCAACCAGAAGCGTGCGTG
 GTTGCCCCGGGAGTCGCTAGAGTTGCGCTGCATGTTGAAAGATGCCGCGGTGATCAGTTGGACTAAGG
 ATGGGGTGCACCTTGGGGCCCAACATAGGACAGTGCTTATTGGGGAGTACCTCCAGATAAAAGGTGCCAC
 ACCTAGAGACTCCGGCTCTATGCTTGTGCTGCAGCTAGGACGGTAGACAGTGAAACTTTGTACTTCATG
 GTGAATGTCACAGATGCCATCTCATCTGGAGATGACGAGGACGACACAGATAGCTCCGAAGACTTTGTCA
 GTGAGAACAGGAGCAACCAGAGAGCACCGTACTGGACCAACCCGAAAAGATGGAGAAGCGGCTCCATGC
 TGTCCCTGCCCAACACTGTGAAGTTCGCTGTCCAGCCGGGGGAATCCAACCCACAATGAGGTGG
 CTAACAAAACGGGAAGGAGTTAAGCAGGAGCATCGCATCGGAGGCTATAAGGTACGAAACCAGCACTGGA
 GCCTTATTATGGAAGTGTGGTCCCATCAGACAAGGCAATTACACCTGCCTGGTGGAGAATGAATACGG
 GTCCATCAACCACACTACCACCTTGATGTTGTTGAGCGATCACCACACCGGCCATCCTCCAAGCTGGA
 CTGCCTGCAATGCCTCCACGGTGGTCGGAGGGGACGTAGAATTTGTCTGCAAGTTTATAGTGATGCC
 AGCCCCATATCCAGTGGATCAACATGTGGAAGAAGCGGAGTAAATATGGACCTGATGGGCTGCCCTA
 CCTCAAGTCTGAAGGCCCGCGGTGTTAACACCACGGACAAAGAAATGAGGTTCTCTATATTCGGAAT
 GTAACCTTTGAGGATGCTGGGGAATACGTGCTTGGCGGTAACTCTATCGGGATACCTTTCACTCTG
 CATGTTGACAGTCTGCCAGCACCTGTGAGAGAGAAGGAGATCACAGTTCGCCAGATTTACCTGGAGAT
 AGCTATTTACTGCATAGGGGTCTTCTTAATCGCCTGCATGGTGGTGACAGTCATCTTTGCCGAATGAAG
 ACCACGACCAAGAAGCCAGACTTCAGCAGCCAGCCAGCTGTGCACAAGCTGACCAAGCGCATCCCCCTGC
 GGAGACAGGTAACAGTTTCGGCCGAGTCCAGCTCGTCCATGAACTCCAACACCCCACTGGTGGAGATAAC
 GACACGCTGTCTCAACGGCGGACACCCCGATGCTAGCAGGGTCTCTGAGTACGAGTTGCCAGAGGAT
 CCAAAGTGGGAATCCCCAGAGATAAGCTGACGCTGGGCAAAACCCTGGGGGAAGGCTGCTTCGGGCAAG
 TAGTCATGGCTGAAGCGGTGGGAATCGATAAAGGACAGACCAAGGAGGACGTACCGTGGCGGTGAAGAT
 GTTGAAAGATGACGCCACAGAGAAGGACCTGTCTGACCTGGTGTGACAGATGGAGATGATGAAGATGATT
 GGTAACATAAGAACATCATCAACCTCCTGGGGCCTGCACCCAGGATGGACCCCTCTATGTCATAGTCG
 AATACGCATCGAAAGGCAACCTCCGGGAATACCTCCGGGCCCGGAGGCCACCTGGCATGGAGTACTCCTA
 TGACATTAACCGAGTTCCCGAGGAGCAGATGACCTTCAAGGACTTGGTGTCTGCACCTACCAGCTGGCG
 AGAGGCATGGAGTACTTGGCTTCCCAAAAATGTATCCATCGAGACTTGGCAGCCAGAAATGTGCTGGTAA
 CAGAAAACAACGTGATGAAGATAGCAGACTTTGGCCTGGCCAGGGATATCAACAACATAGACTATTACAA
 AAAGACCACGAATGGGCGACTTCCAGTCAAGTGGATGGCTCCTGAAGCCCTTTTGTAGAGTTTACACT
 CATCAGAGTGTGCTGGTCTTCGGGTGTTAATGTGGGAGATCTTCACTTTAGGGGTTACCCCTACC
 CAGGGATTCCCGTGGAGGAACTTTTAAGCTGCTCAAAGAGGGCCACAGGATGGACAAGCCCACTG
 CACCAATGAACTGTACATGATGATGAGGGACTGCTGGCATGCTGTACCCTCACAGAGGCCACGTTTAAAG
 CAGTTGGTGAAGACTTGGATCGAATTCTGACTCTCACAACCAATGAGGAATACTTGGACCTCACCCAGC
 CTCTCGAACAGTATTCTCCTAGTTACCCCGACACAAGGAGCTCTTGTCTTCAGGGGACGATTCTGTGTT
 TTCTCCAGACCCCATGCCTTATGACCCCTGCCTGCCTCAGTATCCACACATAAACGGCAGTGTAAAAACA
 TTCTCCAGACCCCATGCCTTATGACCCCTGCCTGCCTCAGTATCCACACATAAACGGCAGTGTAAAAACA

ACGGTACGGCGCGCTCGAGCAGAACTCATCTCAGAAGAGGATCTGGCAGCAATGATATCCTGGATT
 ACAAGGATGACGACGATAAGGTTTAA

Protein Sequence: >RR200453 representing NM_001109892
Red=Cloning site Green=Tags(s)

MGLPSTWRYGTGPGIGTVMVSWGRFICLVLTMATLSLARPSFSLVEDTTLEPEEPPTKYQISQPEACV
VAPGESLELRCLMKDAAVISWTKDGVHLGPNRTVLIGEYLQIKGATPRDSGLYACAAARTVDSETLYFM
VNVTDAISSGDDEDDTDSSEDFVSENRSNQRAPYWTNTEKMEKRLHAVPAANTVKFRCPAGGNPTPTMRW
LKNGKEFKQEHRIIGGYKVRNQHWSLIMESVVP SDKGNYTCLVENEYGSINHTYHLDVVERSHPHRILQAG
LPANASTVVGDDVEFVCKVYSDAQPHIQWIKHVEKNGSKYGPDGLPYLKVLKAAGVNTT DKEIEVL YIRN
VTFEDAGEYTCLAGNSIGISFHSAWLT VLPAPVREKEITASPDYLEIAIYCI GVFLIACMVVTVIFCRMK
TTTTKPDFSSQPAVHKLTKRIPLRRQVT VSAESSSSMNSNTPLVRITRRLSSTADTPMLAGVSEYELPED
PKWEFPRDKLTLGKPLGEGCFGQVMAEAVGIDKDRPKEAVTVAVKMLKDDATEKDLS DLVSEMEMMKMI
GKHKNIINLLGACTQDGPLYVIVEYASKGNLREYL RARRPPGMEYSYDINRVPEEQMTFKDLVSCTYQLA
RGMEYLASQKCIHRDLAARNVLVTENVMKIADFLARDINNIDYKKTNGRLPVKWM APEALFDRVYT
HQSDVWSFGVLMWEIFTLGGSPYGPVPEELFKLLKEGHRMDKPTNCTNELYMMMRDCWHAVPSQRPTFK
QLVEDLDRILTLTTNEEYLDLTQPLEQYSPSPDTRSSCSSGDDSVFSPDPMPYDPCLPQYPHINGSVKT
FSRPHAL*PLPASVSTHKRQC*N

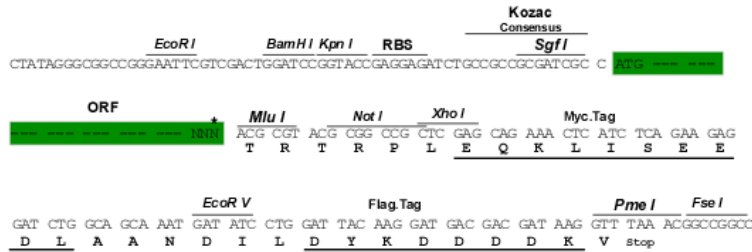
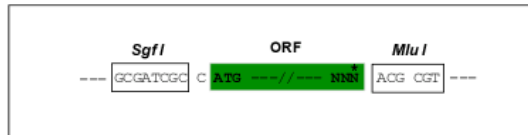
TRTRPLEQKLISEEDLAANDILDYKDDDDKV

Chromatograms: https://cdn.origene.com/chromatograms/ja1451_h05.zip

Restriction Sites: Sgfl-Mlul

Cloning Scheme:

Cloning sites used for ORF Shuttling:



* The last codon before the Stop codon of the ORF

ACCN: NM_001109892

ORF Size: 2520 bp

OTI Disclaimer: The molecular sequence of this clone aligns with the gene accession number as a point of reference only. However, individual transcript sequences of the same gene can differ through naturally occurring variations (e.g. polymorphisms), each with its own valid existence. This clone is substantially in agreement with the reference, but a complete review of all prevailing variants is recommended prior to use. [More info](#)

OTI Annotation: This clone was engineered to express the complete ORF with an expression tag. Expression varies depending on the nature of the gene.

Components: The ORF clone is ion-exchange column purified and shipped in a 2D barcoded Matrix tube containing 10ug of transfection-ready, dried plasmid DNA (reconstitute with 100 ul of water).

- Reconstitution Method:**
1. Centrifuge at 5,000xg for 5min.
 2. Carefully open the tube and add 100ul of sterile water to dissolve the DNA.
 3. Close the tube and incubate for 10 minutes at room temperature.
 4. Briefly vortex the tube and then do a quick spin (less than 5000xg) to concentrate the liquid at the bottom.
 5. Store the suspended plasmid at -20°C. The DNA is stable for at least one year from date of shipping when stored at -20°C.

RefSeq Size: 4651 bp

RefSeq ORF: 2523 bp

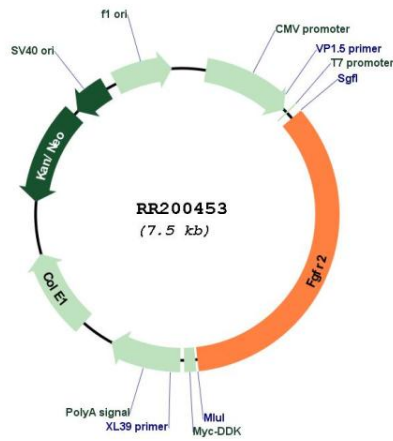
Locus ID: 25022

Cytogenetics: 1q37

MW: 94 kDa

Gene Summary: may play a role in mesodermal cell differentiation [RGD, Feb 2006]

Product images:



Circular map for RR200453