

Product datasheet for **RR200449**

Stat1 (NM_032612) Rat Tagged ORF Clone

Product data:

Product Type:	Expression Plasmids
Product Name:	Stat1 (NM_032612) Rat Tagged ORF Clone
Tag:	Myc-DDK
Symbol:	Stat1
Synonyms:	DD6G4-4
Vector:	pCMV6-Entry (PS100001)
E. coli Selection:	Kanamycin (25 ug/mL)
Cell Selection:	Neomycin



[View online »](#)

ORF Nucleotide Sequence:

>RR200449 representing NM_032612
 Red=Cloning site Blue=ORF Green=Tags(s)

TTTTGTAATACGACTCACTATAGGGCGGCCGGGAATTCGTGACTGGATCCGGTACCGAGGAGATCTGCC
 GCC**CGCATCGCC**

ATGTCGCAGTGGTACGAGCTTCAGCAGCTGGACTCCAAGTTCCTGGAGCAGGTGCACCAGCTGTACGATG
 ACAGTTTCCCATGGAAATCAGACAGTACCTGGCCAGTGGCTAGAAAAGCAAGACTGGGAGCATGCTGC
 CTACGACGTCTCGTTCGCCACCATCCGCTTCCATGACCTGCTCTCCAGCTGGATGACCAGTACAGCCGC
 TTTTCTTTGGAGAATAATTTCTTGTTCAGCACAACATAAGGAAAAGCAAGCGTAATCTCCAGGATAACT
 TCCAAGAAGATCCCGTACAGATGCCATGATTATCCACAACCTGTCTGAAGGAGGAGAGGAAGATTTTGGAA
 AACGCCAGCGATTTAATCAGGCCCAGGAGGAAATATTCAGAACACCGTGATGTTAGATAAACAGAAG
 GAGCTGGACAGTAAAGTCAGAAATGTGAAGGACCAAGTCATGTGCATAGAGCATGAAATCAAGACCCTAG
 AAGACTTACAAGATGAATATGACTTTAATGCAAAACCTCTCAGAACAGAGAAAGCGAAGCCAATGGTGT
 GGCGAAGAGCGACCAGAAACAGGAACAGCTGCTGCTGCATAAGATGTTCTTAATGCTTGACAACAAGAGA
 AAGGAGATAATTCACAAAATCAGAGAGCTGCTGAACTCCATCGAGCTCACTCAGAACACTCTGATTAATG
 ATGAGCTTGTGGAGTGGAAAGCAAGACAGCAGAGTGCCTGCATTGGGGGACCGCCCAATGCCTGCCTGGA
 TCAGCTGCAAAGCTGGTTCACCATGTTGCAGAGAGCCTGCAGCAGGTCCGTGACGAGCTTAAAAAGCTG
 GAGGAGTTGGAACAGAAATTCACCTATGAGCAGGACCCTATTACAAAAACAAGCAGGTGTTATCCGATC
 GCACCTTCGTCTCTCCAGCAGCTCATTAGAGCTCCTTTGGTGGAAACGACAGCCGTGCATGCCAAC
 TCACCTCAGAGGCCCTGGTCTTGAAGACTGGGTACAGTTCAGTGTGAAGCTGAGACTGTTGGTGA
 TTGCAAGAAGTGAACATAAATGAAAGTGAAGTCTCATTGACAAAGATGTGAACGAGAAAAACACAG
 TGAAGGATCCGGAAGTCAACATCTTGGGTACTCACACAAAAGTGAACATGGAAGAATCCACCAA
 CGGAAGTTTGGCAGCTGAGTTCGACACCTGCAACTGAAGGAACAGAAAAATGCTGGGAACAGAACCAAT
 GAGGGTCTCTCATTGTACCGAAGAATTCACTCTTCTAGCTTTGAAACCCAGTTGTGCCAGCCAGGCT
 TGGTGATTGACCTTGAGACCACCTCTTCCCGTCTGGTGTGATCTCCAATGTCAGCCAGCTCCCCAGTGG
 CTGGGCTTCTATCCTGTGGTACAACATGCTGGTGACAGAGCCAGGAATCTCTCTTCTCCTGAACCCC
 CCGTGTGCGTGGTGGTCCAGCTCTCAGAGGTGCTGAGTTGGCAGTTTTTCGTGAGTACCAAGAGAGGTC
 TCAACGCTGACCAGCTGAGCATGCTGGGGGAGAAGCTTCTGGCCCTAATGCTGGCCCTGATGGTCTTAT
 TCCATGGACAAGTTCTGTAAGGAAAATATTAACGATAAGAATTTCTCCTTCTGGCCTTGGATTGACACC
 ATCCTAGAAGTCTAATAAGAAGCACCTGCTTGGCTCTGGAATGATGGGTGCATCATGGGCTTTATCAGCA
 AGGAGCGAGAACGTGCTCTGCTCAAGGACCAGCAGCCCGGACGTTCTCTGCTTAGGTTAGTGGAGAGCTC
 CCGGAAGGGGCCATCACATTCACATGGGTGGAACGGTCCCAAAATGGAGGTGAACCCGACTTCCATGCT
 GTTGAGCCCTACACGAAGAAAGAACTTTAGCTGTTACTTTCCAGATATTATTGCAATTACAAAGTCA
 TGGCTGCTGAGAAATACCAGAGAATCCCTGAAGTATCTGTATCCCAATATTGACAAAGACCATGCCTT
 CGGGAAGTACTACTCCAGGCCAAAGGAAGCACCAGAACCAGTGGAGCTCGATGACCCTAAGAGAAGTGA
 TACATCAAGACTGAGTTGATTTCTGTGTCTGAAGTCCACCCTTAGACTTCAGAGCACAGAAAACCTGC
 TTCCATGTCTCCAGAGGAGTTTGACGAGATGTCCAAGATAGTGGGCTCTGAATTTGACAGTATGATGAG
 CGCAGTA

ACGCGTACGCGGCCGCTCGAGCAGAACTCATCTCAGAAGAGGATCTGGCAGCAAATGATATCCTGGATT
 ACAAGGATGACGACGATAAGGTTTAA

Protein Sequence: >RR200449 representing NM_032612
 Red=Cloning site Green=Tags(s)

MSQWYELQQLDSKFLEQVHQLYDDSPMEIRQYLAQWLEKQDWEHAAYDVSFATIRFHDLLSQLDDQYSR
 FSLENNFLLQHNIRKSKRNLQDNFQEDPVQMSMIHNCLEKERKILENAQRFNQAQEGNIQNTVMLDKQK
 ELDSKVRNVKDQVMCIEHEIKTLEDLQDEYDFKCKTSQNRESEANGVAKSDQKQEQLLLHKMFLMLDNKR
 KEIIHKIRELLNSIELTQNTLINDELVEWKRRQQSACIGGPPNACLDQLQSWFTIVAESLQQVRRQLKLL
 EELEQKF TYEQDPITKNKQVLSDRTFVLFQQLIQSSFVVERQPCMPHPQRPLVLTGVQFTVKLRLLVK
 LQELNYNLKVKVSFDKDVNEKNTVKGFRKFNILGTHTKVMNMEESTNGSLAAEFRHLQLKEQKNAGNRTN
 EGPLIVTEELHLSLSEFETQLCQPLVIDLETTSLPVVVISNVSQPSGWASILWYNMLVTEPRNLSFFLNP
 PCAWWSQLSEVLSWQFSSVTKRGLNADQLSMLGEKLLGPNAGPDGLIPWTRFCKENINDKNFSFWPWIDT
 ILELIKHLCLWNDGCMGFISKERERALLKDQQPGTFLLRFSESSREGAITFTWVERSQNGGEPDFHA
 VEPYTKKELSAVTFPDIIRNYKVMMAENIPENPKYLYPNIDKDHF GKYYSRPKEAPEMELDDPKRTG
 YIKTELISVSEVHPSRLQSTENLLPMSPEEFDMSKIVGSEFDSMMSAV

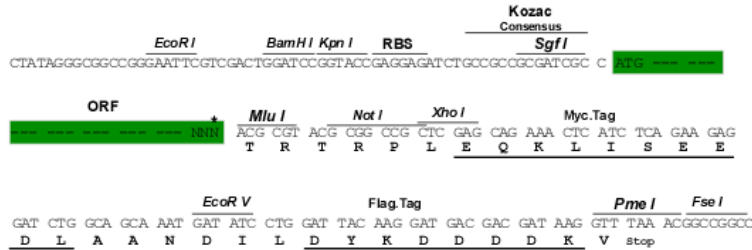
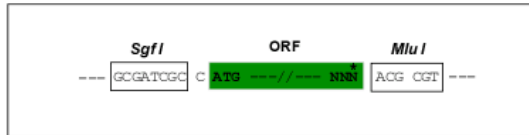
TRTRPLEQKLISEEDLAANDILDYKDDDDKV

Restriction Sites:

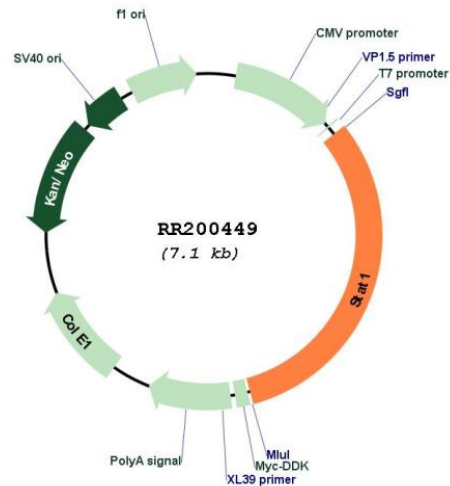
Sgfl-MluI

Cloning Scheme:

Cloning sites used for ORF Shuttling:



* The last codon before the Stop codon of the ORF

Plasmid Map:


ACCN: NM_032612

ORF Size: 2247 bp

OTI Disclaimer: The molecular sequence of this clone aligns with the gene accession number as a point of reference only. However, individual transcript sequences of the same gene can differ through naturally occurring variations (e.g. polymorphisms), each with its own valid existence. This clone is substantially in agreement with the reference, but a complete review of all prevailing variants is recommended prior to use. [More info](#)

OTI Annotation: This clone was engineered to express the complete ORF with an expression tag. Expression varies depending on the nature of the gene.

Components: The ORF clone is ion-exchange column purified and shipped in a 2D barcoded Matrix tube containing 10ug of transfection-ready, dried plasmid DNA (reconstitute with 100 ul of water).

Reconstitution Method:

1. Centrifuge at 5,000xg for 5min.
2. Carefully open the tube and add 100ul of sterile water to dissolve the DNA.
3. Close the tube and incubate for 10 minutes at room temperature.
4. Briefly vortex the tube and then do a quick spin (less than 5000xg) to concentrate the liquid at the bottom.
5. Store the suspended plasmid at -20°C. The DNA is stable for at least one year from date of shipping when stored at -20°C.

RefSeq: [NM_032612.3](#), [NP_116001.2](#)

RefSeq Size: 4102 bp

RefSeq ORF: 2250 bp

Locus ID: 25124

Cytogenetics: 9q22

MW: 87.3 kDa

Gene Summary: component of the IFN-gamma receptor signaling pathway and other signaling pathways; plays a role in development of cytokine resistance [RGD, Feb 2006]