

Product datasheet for **RR200445**

St6gal1 (NM_147205) Rat Tagged ORF Clone

Product data:

Product Type: Expression Plasmids
Product Name: St6gal1 (NM_147205) Rat Tagged ORF Clone
Tag: Myc-DDK
Symbol: St6gal1
Synonyms: Siat1
Vector: pCMV6-Entry (PS100001)
E. coli Selection: Kanamycin (25 ug/mL)
Cell Selection: Neomycin
ORF Nucleotide Sequence: >RR200445 representing NM_147205
Red=Cloning site Blue=ORF Green=Tags(s)

TTTTGTAATACGACTCACTATAGGGCGGCCGGAATTCGTCGACTGGATCCGGTACCGAGGAGATCTGCC
GCC**CGATCGCC**

ATGCGATATTTGTTGTTCTGGTATGGATTGCCTCACTCGTATTCTCAGTGTGTCTGTCATTGGACCCAG
CCAGTGGCATCTTTGAAAATGAGCCATTATTATCTTTATTGCTTCTGCTCCTGGCAAGTTAGTCACCAC
AGAAAAGCGCTTCTCAAGGACAGTTTGTACACCGAAGGAATCCTAATTGTATGGGACCCATCCGTGTAT
CATGCAGATATCCAAAGTGGTATCAGAAACCAGACTACAATTTCTCGAAACCTATAAGAGTTACCGAA
GGCTGAACCCAGCCAGCCATTTTATATCTCAAGCCCCAGATGCCATGGGAACTGTGGGACATCATTCA
GGAAATCTCTGCAGATCTGATTCAGCCAAATCCCCATCTCCGGCATGCTGGGTATCATCATCATGATG
ACGCTGTGTGACCAGGTAGATATTTACGAGTTCCTCCCATCCAAGCGCAAGACGGACGTGTGCTATTATC
ACCAAAGTTCTTTGACAGCGCTTGCACGATGGGTGCCTACCACCGCTCCTCTTCGAGAAGAATATGGT
GAAGCATCTCAATGAGGGAACAGATGAAGACATTTATTTGTTGGGAAAGCCACCCTTTCTGGCTCCGG
AACATTCGTTGT

ACGCGTACGCGGCCGCTCGAGCAGAAACTCATCTCAGAAGAGGATCTGGCAGCAAATGATATCCTGGATT
ACAAGGATGACGACGATAAGGTTTAA



[View online »](#)

Protein Sequence: >RR200445 representing NM_147205
 Red=Cloning site Green=Tags(s)

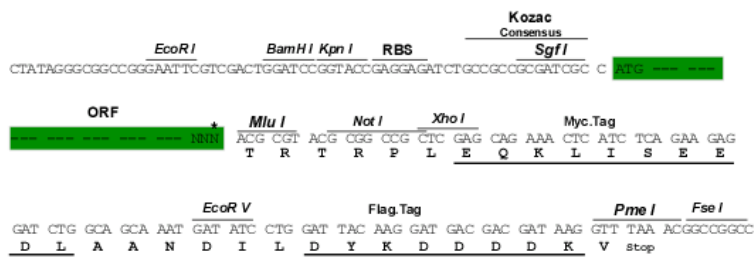
MRYLLFWYGLPHSYSQCVCHWTPASGIFENEPLLSLLLLLGGKLVTEKRFKDSLTYTEGILIVWDPSVY
 HADIPKWYQKPDYNFFETYKSYRRLNPSQPFYILKQMPWELWDIIQEISADLIQPNPPSSGMLGIIIMM
 TLCDQVDIYEFLLPSKRKTDVICYHQKFFDSACTMGAYHPLLFEKNMVKHLNEGTDEDIYLF GKATLSGFR
 NIRC

TRTRPLEQKLISEEDLAANDILDYKDDDDKV

Restriction Sites: Sgfl-MluI

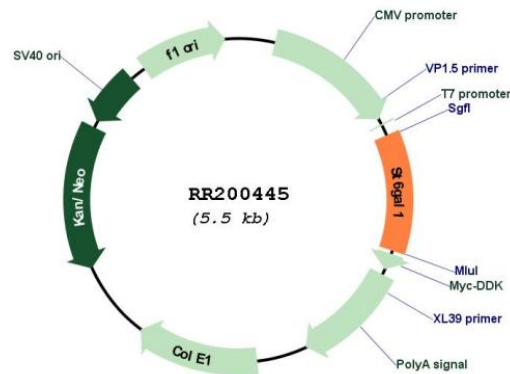
Cloning Scheme:

Cloning sites used for ORF Shuttling:



* The last codon before the Stop codon of the ORF

Plasmid Map:



ACCN: NM_147205

ORF Size: 642 bp

OTI Disclaimer:	The molecular sequence of this clone aligns with the gene accession number as a point of reference only. However, individual transcript sequences of the same gene can differ through naturally occurring variations (e.g. polymorphisms), each with its own valid existence. This clone is substantially in agreement with the reference, but a complete review of all prevailing variants is recommended prior to use. More info
OTI Annotation:	This clone was engineered to express the complete ORF with an expression tag. Expression varies depending on the nature of the gene.
Components:	The ORF clone is ion-exchange column purified and shipped in a 2D barcoded Matrix tube containing 10ug of transfection-ready, dried plasmid DNA (reconstitute with 100 ul of water).
Reconstitution Method:	<ol style="list-style-type: none">1. Centrifuge at 5,000xg for 5min.2. Carefully open the tube and add 100ul of sterile water to dissolve the DNA.3. Close the tube and incubate for 10 minutes at room temperature.4. Briefly vortex the tube and then do a quick spin (less than 5000xg) to concentrate the liquid at the bottom.5. Store the suspended plasmid at -20°C. The DNA is stable for at least one year from date of shipping when stored at -20°C.
RefSeq:	NM_147205.2 , NP_671738.2
RefSeq Size:	3248 bp
RefSeq ORF:	645 bp
Locus ID:	25197
UniProt ID:	P13721
Cytogenetics:	11q23
MW:	25.2 kDa
Gene Summary:	may be involved in cell-type specific terminal glycosylation [RGD, Feb 2006]