

Product datasheet for **RR200389**

Celf2 (NM_001083586) Rat Tagged ORF Clone

Product data:

Product Type:	Expression Plasmids
Product Name:	Celf2 (NM_001083586) Rat Tagged ORF Clone
Tag:	Myc-DDK
Symbol:	Celf2
Synonyms:	Brunol3; Cugbp2; Etr3; Napor
Vector:	pCMV6-Entry (PS100001)
E. coli Selection:	Kanamycin (25 ug/mL)
Cell Selection:	Neomycin



[View online »](#)

ORF Nucleotide Sequence:

>RR200389 representing NM_001083586
 Red=Cloning site Blue=ORF Green=Tags(s)

TTTTGTAATACGACTCACTATAGGGCGGCCGGAATTCGTCGACTGGATCCGGTACCGAGGAGATCTGCC
 GCC**GCGATCGCC**

ATGTTTGAGCGCACTTCTGAAGTGGCTTTTGTGAGACTATCAGTGTAGAAAGCATGCGCTGCCAAAT
 CCGCTGTTACTATGAGAAATGAGGAGCTGCTTTTAAGTAACGGCACAGCCAACAAGATGAACGGAGCTTT
 GGATCATTCCGACCAGCCAGACCAGATGCCATTAAGATGTTTGTGCGACAGATCCCTAGGTCCTGGTCA
 GAAAAGGAGCTGAAAGAAGCTTTTGGAGCCTTATGGAGCTGTCTACCAGATCAACGTCCTCCGGGACCGGA
 GTCAGAACCCTCCAGAGCAAAGGTTGTTGTTTCGTAACATTTTATAACAAGAAAAGCTGCACCTGAGGC
 CCAGAATGCACCTGACAATATTAAGAACTTTACCTGGGATGCATCATCCATTAGATGAAACCTGCAGAT
 AGTGAAAAGTCAAACGCTGTGGAAGACCGAAAATTGTTTCATAGGAATGGTTTCCAAGAAGTGAACGAGA
 ATGACATCAGAGTGATGTTTTCTCCTTCGGTCAGATAGAAGAATGCCGATTCTCCGGGACCTGACGG
 GCTGAGTCGAGGCTGTGCGTTTGTACATTTTCTACCAGGCAATGGCACAGAATGCAATCAAAGCCATG
 CATCAGTCTCAGACCATGGAGGGCTGCTTTCACCTATCGTGGTGAAGTTCGCTGACACTCAGAAGGACA
 AGGAGCAAAGGCCCTCCAGCAGCAGCTTGACAGCAGATGCAACAGCTCAACACTGCCACTTGGGGGAA
 CCTGACAGGACTGGTGGACTTACCCACAGTACCTGGCGCTTCTGCAGCAGGCCACCTCCTCCAGCAAC
 CTGGGTGCATTAGTGGCATTAGCAAAATGGCTGGCATGAATGCTTTACAGTTACAGAATCTGGCAACGC
 TGGCTGCAGCTGCAGCTGCCGCCAAACCTCAGCCACCAGCACCATGCAAAACCTCTCTCCAGCACAAG
 CAGTGCCCTGGGGCCCTCACAAGTCCCGTGGCTGCTTCAACCCCAATTCTACTGCTGGTGCAGCCATG
 AACTCCTTGACCTCTCTGGGACTCTGCAAGGATTGGCTGGAGCCACTGTCGGATTGAATAATATTAATG
 CACTAGCAGGTATGGCGCTCTGAATGGAGGACTTGGCGCCACAGGCTTGACGAATGGTACGGCTGGCAC
 CATGGACGCCCTCAGCAGGCCCTACTCAGGAATTCAGCAGTACGGCGCAGCTGCACCTGCCACTTTGTAC
 AGCCAGAGCCTGCTGCAGCAGCAGAGCGCTGCAGGCAGCCAGAAGGAAGTCCAGAGGGGCAAACCTCT
 TTATTTACCACCTTCCACAGGAGTTTGGAGACCAGGACATTCTGCAGATGTTTCATGCCCTTTGAAATGT
 TATCTCTGCTAAAGTCTTCATTGACAAACAGACCAATCTGAGCAAGTGTCTTGGTTTTGTAGCTATGAC
 AATCCAGTCTCTGCACAAGCTGCAATCCAGGCTATGAACGGCTTTCAGATCGGCATGAAACGCTTGAAGG
 TGCAGCTGAAGCGCTCCAAAACGACAGCAAACCTTAC

ACGCGTACGCGGCCGCTCGAGCAGAAACTCATCTCAGAAGAGGATCTGGCAGCAAATGATATCTGGATT
 ACAAGGATGACGACGATAAGGTTTAA

Protein Sequence:

>RR200389 representing NM_001083586
 Red=Cloning site Green=Tags(s)

MFERTSELAFVETISVESMRCPKSAVTMRNEELLSNGTANKMNGALDHSQDPDPAIKMFVQIPRSWS
 EKELKELFEPYGAUVYQINVLDRSQNPPQSKGCCFVTFYTRKAALAEQNALHNIKTLPGMHHPQMKPAD
 SEKSNAVEDRKLFIGMVSKKCNENDIRVMFSPFGQIEECRILRGPDLRGCAFVTFSTRAMAQNAIKAM
 HQSQTMEGCSSPIVVKFADTQKDKEQRRLLQQQLAQMQQLNATWGNLTGLGGLTPQYLALLQQATSSSN
 LGAFSGIQQMAGMNALQLQNLATLAAAAAAQTSATSTNANPLSSTSSALGALTSVAASPSTNAGAAAM
 NSLTSGLTQGLAGATVGLNNINALAGMAALNGGLGATGLTNGTAGTMDALTQAYSQIQYAAAALPTLY
 SQSLLQQQSAAGSQKEGPEGANLFIYHLPQEFQDQDILQMFMPFGNVISAKVFIKQTNLSKCFGFVSYD
 NPVSAQAAIQAMNGFQIGMKRLKVLKRSKNDKPY

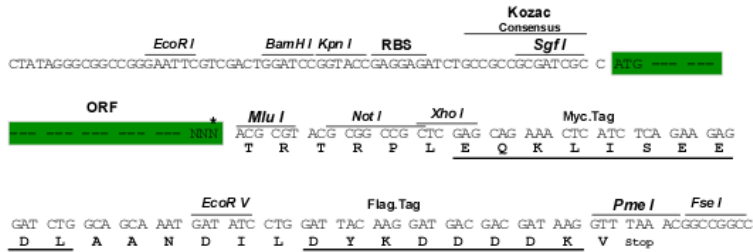
TRTRPLEQKLISEEDLAANDILDYKDDDDKV

Restriction Sites:

Sgfl-MluI

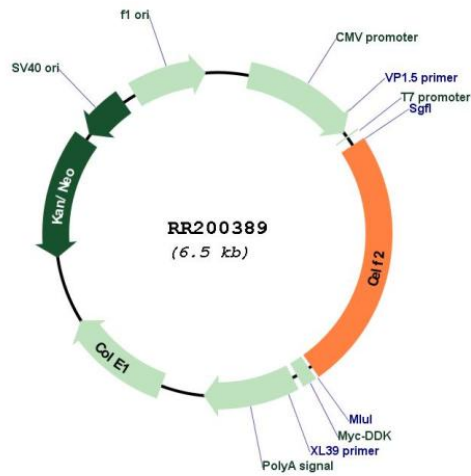
Cloning Scheme:

Cloning sites used for ORF Shutting:



* The last codon before the Stop codon of the ORF

Plasmid Map:



ACCN:	NM_001083586
ORF Size:	1578 bp
OTI Disclaimer:	The molecular sequence of this clone aligns with the gene accession number as a point of reference only. However, individual transcript sequences of the same gene can differ through naturally occurring variations (e.g. polymorphisms), each with its own valid existence. This clone is substantially in agreement with the reference, but a complete review of all prevailing variants is recommended prior to use. More info
OTI Annotation:	This clone was engineered to express the complete ORF with an expression tag. Expression varies depending on the nature of the gene.
Components:	The ORF clone is ion-exchange column purified and shipped in a 2D barcoded Matrix tube containing 10ug of transfection-ready, dried plasmid DNA (reconstitute with 100 ul of water).
Reconstitution Method:	<ol style="list-style-type: none">1. Centrifuge at 5,000xg for 5min.2. Carefully open the tube and add 100ul of sterile water to dissolve the DNA.3. Close the tube and incubate for 10 minutes at room temperature.4. Briefly vortex the tube and then do a quick spin (less than 5000xg) to concentrate the liquid at the bottom.5. Store the suspended plasmid at -20°C. The DNA is stable for at least one year from date of shipping when stored at -20°C.
RefSeq:	NM_001083586.2 , NP_001077055.2
RefSeq Size:	1799 bp
RefSeq ORF:	1581 bp
Locus ID:	29428
Cytogenetics:	17q12.3
MW:	56.3 kDa
Gene Summary:	RNA binding protein that binds to two sets of AU-rich sequences in COX2; involved in mRNA stabilization and translational silencing [RGD, Feb 2006]