

## Product datasheet for **RR200267**

### Akap12 (NM\_001033653) Rat Tagged ORF Clone

#### Product data:

**Product Type:** Expression Plasmids  
**Product Name:** Akap12 (NM\_001033653) Rat Tagged ORF Clone  
**Tag:** Myc-DDK  
**Symbol:** Akap12  
**Synonyms:** AKAP12A; AKAP12B; AKAP12G  
**Vector:** pCMV6-Entry (PS100001)  
**E. coli Selection:** Kanamycin (25 ug/mL)  
**Cell Selection:** Neomycin  
**ORF Nucleotide Sequence:** >RR200267 representing NM\_001033653  
Red=Cloning site Blue=ORF Green=Tags(s)

TTTGTAAACGACTCACTATAGGGCGCCGGGAATTCGTCGACTGGATCCGGTACCGAGGAGATCTGCC  
GCCGGATCGCC

ATGCTGGGACCATTACCATCACAGTTGGACAGCGAGAGTCAGAAGATGTGAGAGAAAAAGACCGAGTTG  
AAGAAATGGCGCAACTCCACAGCTGTTGAAGATATCACAAAGGATGGGCAGGAGGAGACATCAGAAAT  
AATTGAACAGATCCCTGCTTCAGAAAGCAATGTGAAGAAATGGTACAGCCTGCTGAGTCCCAGGCTAAT  
GATGTTGGCTCAAGAAAGTATTTAAATTTGTTGGTTTTAAATTCACGGTGAAGAAGGATAAAAAAGAAA  
AGTCAGATACTGTCCAATACTCACTGTCAAGAAGGATGAAGGCCAAGGGGCAGAAGCCTCTGTCGGAGC  
TGGAGACCACAGGAGCCAGTGTGGAGACTGCCGTGGAGAGTCAGCATCCAAAGAAAGTGAGCTGAAG  
CAATCCACAGAGAAGCAAGAAGGCACCCTGAAGCAAGAACAGAGCAGCACAGAAATCCCCCTTCAAGCCG  
AATCTGATCAAGCGGCTGAGGAAGAAGCCAAAGATGAAGGAGAAGAAAAACAAGAGAAAGAGCCACCAA  
GTCCCCAGAATCCCCGAGCAGCCAGTCAGCAGTGAGACAACATCTTCTTCAAGAAGTTCTTCACTCAC  
GGTTGGCCGGCTGGCGCAAGAAGACCAGCTTCAAGAAATCAAAAAGAGGATGATCTGAAACTGCCGAGA  
AGAGAAAGGAGCAAGAGGCAGAAAAAGTAGACGAGGAAGAAAAGGAAAAGACAGGCCAGCCTCGGAGGA  
GCAGGAGCCGGCAGAAGACACAGACCAGGCCAGGTTGTCAGCAGACTACGAGAAGGTGGAGCTGCCTTTG  
GAAGACCAGGTTGGTGACCTGGAGGCATCGTCAGAGGAGAAGTGTCTCTTTGGCAACGGAAGTGTGTTG  
ATGAGAAGATGGAAGCCACCAAGAAGTTGTTGCAGAGGTCCACGTGAGCACCGTGGAGAAGACAGAGGA  
GGAGCAGGGAGGAGGAGGAGGCTGAAGGGGCGTGGTGGTAGAAGGAACAGGAGAATCCTTGCCCCCT  
GAGAACTGGCTGAGCCCAGGAGGTCCCCAGGAAGCTGAGCCTGCTGAGGAGCTGATGAAGAGCAGAG  
AGATGTGTCTCTGGAGGAGACCACACTCAACTGACAGACCTAAGTCTGAAGAGAAGACGCTGCCCAA  
ACACCCAGAAGGCATTGTCAGTGAGGTGGAGATGCTGTCTCTCAGGAAAGAATCAAGGTACAGGGAAGT  
CCCTTGAAGAACTCTTCAAGTAGCTCAGGCTTAAAGAAGCTGTCTGGGAAGAAGCAGAAGGGGAAACGAG  
GAGGTGGGGGAGACGAAGAGCCTGGAGAATACCAACACATTACACCCGAATCCCCAGAGAGTGCTGATGA  
GCAGAAGGGAGAGAGCTCTGCGTCGTCGCCCGAGGAGCCTGAGGAGACCAGTGTCTGGAGAAAAGGCCG  
CTGGAAGCACCCAGGATGGGAAGCTGAGGAAGAACTACTTCCGATGGAGAGAAGAAGAGGGAAGGGA



[View online »](#)

TCACTCCCTGGGCATCCTTCAAAAAGATGGTGACACCCAAGAAACGGGTCCGAAGACCTTCTGAGAGTGA  
 CAAGGAGGAAGAGCTGGAGAAGGTCAAGAGCGCCACCTTGTCTCCACTGATAGCACAGTGTGAGAAATG  
 CAAGATGAAGTCAAACTGTTGGTGAGGAACAAAAGCCAGAGGAACAAAGCGTAGGGTGGATACTTCAG  
 TGTCTTGGGAAGCACTGATTTGTGTGCGATCATCCAAGAAGAGAGCAAGGAAGGCATCCTCTCAGATGA  
 TGAAGGAGGGCCAAGGACTGGGAGGGGACAGTACAGAGCAGAGGAGGCCAGCAAAGACAAAGAAGCC  
 GGAACAGACGCTGTTCTGCCAGCACCCAGGAGCAGGACCAAGCGCAAGGAAGTTCTCACCCGAGCCAG  
 CGGGAAGCCCTTCCGAAGGGGAAGGTGTCTCCACTTGGGAGTCATTTAAAAGATTAGTCACTCCAAGAAA  
 AAAATCCAAGTCAAACTGGAAGAGAAAAGCCGAAGACTCTAGTGTAGAGCAGTTGTCCACTGAGATCGAA  
 CCGAGTAGAGAAGAACTTGGGTTTCCATTAAGAAATTCATCCCCGACGCGGGAAGAAAAGGGCAGATG  
 GGAAGCAAGAACAAGCCACTGTGGAAGACTCAGGGCCAGTGGAGATAAATGAGGACGACCCTGATGTCCC  
 AGCCGTCGTGCCTCTGTCTGAGTATGATGCAGTGGAGAGGGAGAAGATGGAAGCCAGGGGAATGCGGAG  
 CTGCCACAGTGTGGGGCTGTGTACGTGTCCGAGGAGCTCAGTAAGACTCTGGTCCACACTGTGAGTG  
 TCGCAGTCATTGATGGGACCAGGCAGTACCAGTGTGGAAGAGCGGTCTCCTTCGTGGATATCCGCTTC  
 CGTAACAGAACCTCTTGAACACACAGCGGGAAGCCATGCCACCTGTTGAAGAGGTCACTGAAAAAGAC  
 ATCATTGCAGAAGAACTCTGTGCTCACCCAGACGTTACCAGAGGGTAAAGATGCCATGACGACATGG  
 TCAACAGTGAAGTGGATTTCACCTCAGAAGCTGTGACAGCCACAGAGACCTCAGAGGCTCTCCGACTGA  
 AGAAGTTACCGAAGCATCGGGGGCCGAAGAGACCACAGACATGGTGTCCGCAATTTCCAGCTGACTGAC  
 TCCCCAGACACCACAGAGGAAGCCACCCAGTTCCAGGAGGTAGAGGGTGGTGTGCTAGATACAGAAGAAG  
 AGGAGCGCCAGACGCAGGCCATCCTCCAAGCCGTTGCAGACAAGGTGAAAGAGGAGTCCCAGGTGCCTGC  
 AACCCAGACTGTGCAGAGAACGGGTCAAAGCACTGGAGAAGGTTGAGGAGGTAGAGGAGGACTCCGAA  
 GTGCTGGCTTCGGAGAAAGAGAAGGACGTTATGCCGAAAGGACCCGTCAGGAAGCTGGAGCTGAGCATC  
 TTGCACAGGGCTCTGAGACTGGACAGGCTACTCCAGAGAGCCTTGAAGTTCTGAAGTACACAGCAGATG  
 AGACCATGTCCACAGTCCAGGTTATCAAGCTCCAGCAGCTGATGGAACAGGCCGTGGCCCTGAGTCA  
 TCCGAAAACCTTGACAGACAGTGAAGCAAAATGGAAGCACTCCCTTAGCAGATTGACACACTGCAGATGGGA  
 CACAGCAAGATGAAACATTGACAGCCAGGACAGTAAAGCCACTGCAGCTGTGAGGACGTACAGGTCAC  
 AGAAGAAGAGGCGGCTACTGCTCAGAAAGAGGAGCCTTCGACACTACCTAATAATGTTCCAGCCCAGGAA  
 GAACATGGGGAAGAACCAGGAAGAGATGTTCTTGAACCTACACAGCAAGAGCTTGTGCTGCAGCCGTGC  
 CCGTTCTGGCAAAGACTGAGGTGGTCAAGAGGGTGAAGTTGACTGGTTGGATGGAGAAAAAGTCAAAGA  
 AGAACAGGAGGTGTTGTACACTCTGGACCAACAGTCAAAGGCTGCTGATGTGACATATGACAGTGAA  
 GTGATGGGAGTGGCCGGTGTGAGGAAAAGGAGAGTACTGAAGTGCAGAGTCTTAGCCTGGAGGAGGGAG  
 AGATGGAAGTGCAGTGAAGGAGAAAAGGGAGACAAAGCCAGAGCAAGTGAAGAGGTGAGCA  
 GGAACAGCCGCTCCTGAGCATGAAGGAACCTACGGGAAGCCAGTCTGACACTTGCATGCCAGCTCA  
 GAGAGGGGGAAGGCACTGGGAAGCCTTGGAGGAAGCCCTTCTCTCCAGACCAAGACAAAGCAGGTTGCA  
 TAGAGGTTCAAGTTCAAAGCCTGGACACAACAGTCACTCAAACAGCAGAAGCTGTGAAAAAGGTCATAGA  
 AACGGTTGTGATTTCCAGAGACAGGTGAAAGTCCAGAGTGTGTAGGTGCACACTTATTACCAGCTGAGAA  
 TCCTCTGCAACGGGTGGCCACTGGACTCTTCCAGCATGCAGAGGACACGGTACCCCTGGGGCTGAGTCTC  
 AGGCAGAAATCCATCCCAATCATAGTAACTCCTGCTCCTGAAAGCACCCATACATCTGACCTACAAGGAGA  
 AATAAGCGCATCCAGAGAGAGCGATCAGAGGAAGAGGACAAGCCAGATGCTGGTCTGATGCTGACGGC  
 AAGGAGAGTACAGCAATCGAAAAAGTCTCAAGGCTGAACCTGAGATCCTGGAACCTGAGAGTAAGAGCA  
 ACAAGATTGTGCTGAACGTCATTACAGACAGCCGTTGACCAGTTCGCACGTACAGAAAACAGCCCCGAAAC  
 TCATGCTTATGATTACAGACCCAGGTTCTGCAATGCAGGCTGACAGCCAGGGAGCCAAACAGATTGCTG  
 GACAAAAATGAAAGTTGCCAAGATGAAACACCCAGTGCCGAGCCAGAGAGGACTTGAAGTCTGACC  
 GTTCTGGAGGCATGGGCTCAGCCTCGGAAATGCTTGCCGCGCTTGCAGTTGAAAGCGCCGGTGTCAAAGT  
 AAGCATTGAGAAGCTGCCTCCTCAACCCAAAGATCAAAGGAGCATGCTGCTGATGGCCCTCAGCTCAA  
 AGCTTAGCCAGG  
 AGCTAACCGAGGAGGCGATGCCCAAAAGTTGAGGTCCAGGAAGAAGAAATGTCTACCAAGTCAGTCAA  
 AGAGAACAAGGCCAGGCAGAAGAGGACCTGCAGGAGCCAAAGGAGACCTGGCAGAATCC

ACGCGTACGCGGCGGCTCGAGCAGAAACTCATCTCAGAAGAGGATCTGGCAGCAAATGATATCCTGGATT  
 ACAAGGATGACGACGATAAGGTTTAA

**Protein Sequence:** >RR200267 representing NM\_001033653  
 Red=Cloning site Green=Tags(s)

```

MLGTITITVQGRESEDRVREKDRVEEMAANSTAVEDITKDGQEETSEIIIEQIPASESNVEEMVQPAESQAN
DVGFKKVFVKFVGFKFTVKKDKNEKSDTVQLLVKKDEGEGAEASVAGDHPQPSVETAVGESASKESELK
QSTEKQEGTLKQEQSSTEIPLQAESDQAAEEEEAKDEGEEKQEKEPTKSPESPSPVSETTSSFKKFFTH
GWAGWRKKT SFKKSKEDDLETAEKRKEQEAKEVDEEEKEKTEPASEEQEPAEDTDQARLSADYEKVELPL
EDQVGDLEASSEEKCAPLATEVDFDEKMEAHQEYVVAEVHVSTVEKTEEEQGGGGEAEGGVVVEGTGESLPP
EKLAEPQEVQEAEPAEELMKSREMCVSGGDHTQLTDLSPEEKTLPKHPEGIVSEVEMLSQERIKVQGS
PLKKLFSSSGLKKL SGKKQK GKRGGGGDEEPGEYQHIHTE SPESADEQKGESSASSPEEPEETTCKLEKGP
LEAPQDGEAEEGTTSDGEKKREGITPWASFKKMVT PKRVRPSESDKEEELEKVK SATLSSTDSTVSEM
QDEVKTVGEEQKPEEPKRRVDTSVSWEALICVGS SKRARKASSSDDEGGPRTLGGDSHRAEEASKDKEA
GTDVAVPASTQEQDQAQSSPEPAGSPSEGEVSTWESFKRLVTPRKSKSKLEEKAEADSSVEQLSTEIE
PSREESWVSIKKFIPGRKKRADGKQEATVEDSGPVEINEDDPDVPVAVPLSEYDAVEREKMEAQNAE
LPQLLGAVYVSEELSKTLVHTVSVAVIDGTRAVTSVEERSPSWISASVTEPLEHTAGEAMPPVEEVTEKD
IIAEETPVL TQTLPEGKDAHDDMTSEVDFTSEAVTATETSEALRTEEVTEASGAETTMVSAVSQ L TD
SPDTTEEATPVQVEVEGGVLDTEEEERQTQAILQAVADKVKEESQVPATQTVQRTGSKALEKVEEVEEDESE
VLASEKEKDVMPKGPVQEAAGAEHLAQGSETGQATPESLEVPEVTADVHDVATCQVIKLLQQLMEQAVAPES
SETLTDSETNGSTPLADSDTADGTQQDETIDSQDSKATAAVRQSQVTEEEAATAKQEEPSTLPNNVPAQE
EHGEEPGRDVL EPTQQELAAAAPVLA KTEVGGQEGEVDWLDGEEKVKEEQEVFVHSGPNSQKAADVTYDSE
VMGVAGCQEKESTEVSLSLEEGEMETDVEKEKRETKPEQVSEEGEQETAAPHEGTYGKPVLTLDMPSS
ERKALGSLGGSPSLPDQDKAGCIEVQVQSLD TTVTQTAEAVEKVIETVVISETGESPECVGAHLLPAEK
SSATGGHWTLQHAEDTVPLGPESQAESIPII VTPAPESTLHPDLQGEISASQRERSEEDKPDAGPDADG
KESTAIEKVLKAEPEILELESKSNKIVLNV IQTAVDQFARTETAPETHAYDSQTQVPAMQADSQGAQML
DKNE SCQDETPSAAAQRGLASPRSGMG SASEMLAALAVESAGVKVSI EKLPPQPKDQKEHAADG PQLQ
SLAQAEASASGNLTKESPD TNGPKL TEEGDAPKVEVQEEEMSTKSVKENKAQAEEDLQEPKGD LAES
  
```

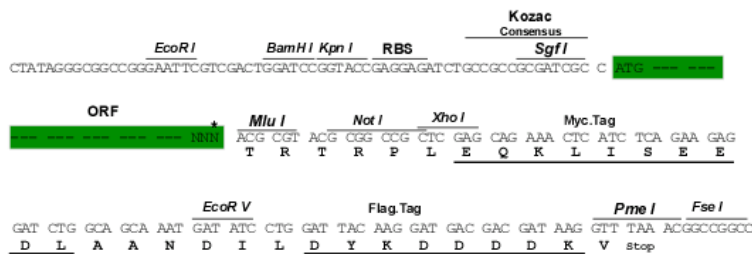
TRTRPLEQKLISEEDLAANDILDYKDDDDKV

**Restriction Sites:**

Sgfl-MluI

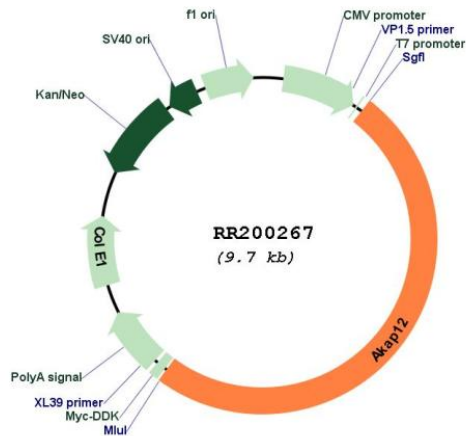
**Cloning Scheme:**

Cloning sites used for ORF Shuttling:



\* The last codon before the Stop codon of the ORF

## Plasmid Map:



ACCN: NM\_001033653

ORF Size: 4821 bp

OTI Disclaimer: The molecular sequence of this clone aligns with the gene accession number as a point of reference only. However, individual transcript sequences of the same gene can differ through naturally occurring variations (e.g. polymorphisms), each with its own valid existence. This clone is substantially in agreement with the reference, but a complete review of all prevailing variants is recommended prior to use. [More info](#)

OTI Annotation: This clone was engineered to express the complete ORF with an expression tag. Expression varies depending on the nature of the gene.

Components: The ORF clone is ion-exchange column purified and shipped in a 2D barcoded Matrix tube containing 10ug of transfection-ready, dried plasmid DNA (reconstitute with 100 ul of water).

Reconstitution Method:

1. Centrifuge at 5,000xg for 5min.
2. Carefully open the tube and add 100ul of sterile water to dissolve the DNA.
3. Close the tube and incubate for 10 minutes at room temperature.
4. Briefly vortex the tube and then do a quick spin (less than 5000xg) to concentrate the liquid at the bottom.
5. Store the suspended plasmid at -20°C. The DNA is stable for at least one year from date of shipping when stored at -20°C.

RefSeq: [NM\\_001033653.1](#), [NP\\_001028825.1](#)

RefSeq Size:	6026 bp
RefSeq ORF:	4824 bp
Locus ID:	83425
UniProt ID:	<a href="#">Q5QD51</a>
Cytogenetics:	1q11
MW:	173.1 kDa
Gene Summary:	Anchoring protein that mediates the subcellular compartmentation of protein kinase A (PKA) and protein kinase C (PKC).[UniProtKB/Swiss-Prot Function]