

Product datasheet for **RR200266**

Akap12 (NM_057103) Rat Tagged ORF Clone

Product data:

Product Type: Expression Plasmids
Product Name: Akap12 (NM_057103) Rat Tagged ORF Clone
Tag: Myc-DDK
Symbol: Akap12
Synonyms: AKAP12A; AKAP12B; AKAP12G
Vector: pCMV6-Entry (PS100001)
E. coli Selection: Kanamycin (25 ug/mL)
Cell Selection: Neomycin
ORF Nucleotide Sequence: >RR200266 representing NM_057103
 Red=Cloning site Blue=ORF Green=Tags(s)

TTTTGTAATACGACTCACTATAGGGCGGCCGGAATTCGTCGACTGGATCCGGTACCGAGGAGATCTGCC
 GCC**CGATCGCC**

ATGGGCGCAGGCAGTTCACCGAGCAGCGGAGCCCGAGCAGCCGGCGGGGAGCGACACGCCGAGCGAGC
 TGGTGCTCAGTGGCCATGGGCCCGCAGCTGAAGCCTCGGGAGCAGCTGGAGACCCCGCCGACGCGGACCC
 CGCCACCAAGCTCCCACAGAAGAATGGCCAGCTGTCTACTGTCAACGGCGTAGCTGAACAAGGAGATGTC
 CATGTCCAAGAGGAAAACAGGAGGGGCGAGGAGGAAGAAGTCTGTTGATGAGGATGTTGGACAGCGAGAGT
 CAGAAGATGTGAGAGAAAAGACCGAGTTGAAGAAATGGCGGCCAACTCCACAGCTGTTGAAGATATCAC
 AAAGGATGGGCAGGAGGAGACATCAGAAATAATTGAACAGATCCCTGCTTCAGAAAGCAATGTGGAAGAA
 ATGGTACAGCCTGCTGAGTCCCAGGCTAATGATGTTGGCTTCAAGAAAGTATTTAAATTTGTTGGTTTTA
 AATTCACGGTGAAGAAGGATAAAAATGAAAAGTCAGATACTGTCCAATACTCACTGTCAAGAAGGATGA
 AGGCGAAGGGGCGAGAAGCCTCTGTCCGAGCTGGAGACCACAGGAGCCAGTGTGGAGACTGCCGTCCGA
 GAGTCAGCATCCAAGAAAAGTGAAGCAATCCACAGAGAAGCAAGAAGCCACCTGAAGCAAGAAC
 AGAGCAGCACAGAAATCCCCCTTCAAGCCGAATCTGATCAAGCGGCTGAGGAAGAAGCCAAAGATGAAG
 AGAAGAAAAACAAGAGAAAGAGCCCAAGTCCCAAGAAATCCCGAGCAGCCAGTCAAGCAAGTGAAGCA
 ACATCTTCTTCAAGAAGTTCTTCACTACGGTTGGGCCGGCTGGCGCAAGAAGACCAGCTTCAAGAAAT
 CAAAAGAGGATGATCTGGAACTGCCGAGAAGAGAAAGGAGCAAGAGGCAGAAAAAGTAGACGAGGAAGA
 AAAGGAAAAGACAGAGCCAGCCTCGGAGGAGCAGGAGCCGGCAGAAAGACACAGACCAGGCCAGGTTGTCA
 GCAGACTACGAGAAGGTGGAGCTGCCTTTGGAAGACCAGGTTGGTGACCTGGAGGCATCGTCAGAGGAGA
 AGTGTGCTCCTTTGGCAACGGAAGTGTGATGAGAAGATGGAAGCCACCAAGAAGTGTGTCAGAGGT
 CCACGTGAGCACCGTGGAGAAGACAGAGGAGGAGCAGGGAGGAGGAGGAGGCTGAAGGGGGCGTGGTG
 GTAGAAGAACAGGAGAAATCCTTGCCCCCTGAGAACTGGCTGAGCCCCAGGAGGTCCTCCAGGAAGCTG
 AGCCTGCTGAGGAGCTGATGAAGAGCAGAGAGATGTGTCTCTGAGGAGACCACACTCAACTGACAGA
 CCTAAGTCTGAAGAGAAGACGCTGCCCAACACCCAGAAGGCATTGTCAGTGAGGTGGAGATGCTGTCC
 TCTCAGGAAAAGATCAAGGTACAGGGAAGTCCCTTGAAGAACTCTTCAAGTAGCTCAGGCTTAAAGAAGC



[View online >](#)

TGTCTGGGAAGAAGCAGAAGGGGAAACGAGGAGGTGGGGGAGACGAAGAGCCTGGAGAATACCAACACAT
 TCACACCGAATCCCCAGAGAGTCTGATGAGCAGAAGGGAGAGAGCTCTGCGTCTGCCCCGAGGAGCCT
 GAGGAGACCACGTGTCTGGAGAAAGGGCCGCTGGAAGCACCCAGGATGGGGAAGCTGAGGAAGGAACTA
 CTTCCGATGGAGAGAAGAAGAGGGAAAGGGATCACTCCCTGGGCATCCTTCAAAAAGATGGTGACACCCAA
 GAAACGGGTCCGAAGACCTTCTGAGAGTGACAAGGAGGAAGAGCTGGAGAAGGTCAAGAGCGCCACCTTG
 TCCTCCACTGATAGCACAGTGTCAAAAATGCAAGATGAAGTCAAACCTGTTGGTGAGGAACAAAAGCCAG
 AGGAACCAAAGCGTAGGGTGGATCTTCAAGTGTCTTGGGAAGCACTGATTTGTGTGCGATCATCCAAGAA
 GAGAGCAAAGGAAGGCATCCTCTTCAGATGATGAAGGAGGGCCAAGGACACTGGGAGGGGACAGTCACAGA
 GCAGAGGAGGCCAGCAAAGACAAAAGAAGCCGGAACAGACGCTGTTCTGCCAGCACCCAGGAGCAGGACC
 AAGCGCAAGGAAGTTCCTCACCCGAGCCAGCGGGAAGCCCTTCCGAAGGGGAAGGTGTCTCCACTTGGGA
 GTCATTTAAAAGATTAGTCACTCCAAGAAAAAATCCAAGTCAAACCTGGAAGAGAAAGCCGAAGACTCT
 AGTGTAGAGCAGTTGTCCACTGAGATCGAACCGAGTAGAGAAGAATCTTGGGTTTCCATTAAGAAATTCA
 TCCCCGGACGGCGGAAGAAAAGGGCAGATGGGAAGCAAGAACAAGCCACTGTGGAAGACTCAGGGCCAGT
 GGAGATAAATGAGGACGACCCTGATGTCCAGCCGTCGTGCTCTGTCTGAGTATGATGCAGTGGAGAGG
 GAGAAGATGGAAGCCCAGGGGAATGCGGAGCTGCCCCAGCTGCTGGGGGTGTGTACGTGTCCGAGGAGC
 TCAGTAAGACTCTGGTCCACACTGTGAGTGTGCGAGTCATTGATGGGACCAGGGCAGTCACCAAGTGTGCA
 AGAGCGGTCTCCTTCGTGGATATCCGCTTCCGTAAACAGAACCTCTTGAACACACAGCGGGGAGAAGCCATG
 CCACCTGTTGAAGAGGTCACTGAAAAAGACATCATTGCAGAAGAACTCCTGTGCTCACCCAGACGTTAC
 CAGAGGGTAAAGATGCCCATGACGACATGGTCCACAGTGAAGTGGATTTACCTCAGAAGCTGTGACAGC
 CACAGAGACCTCAGAGGCTCTCCGTAAGTGAAGAAGTTACCGAAGCATCGGGGGCCGAAGAGACCACAGAC
 ATGGTGTCCGAGTTTCCAGCTGACTGACTCCCAGACACCACAGAGGAAGCCACCCAGTTCAGGAGG
 TAGAGGGTGGTGTCTAGATACAGAAGAAGAGGAGCGCCAGACGCGAGGCCATCCTCAAGCCGTTGCAGA
 CAAGGTGAAAGAGGAGTCCCAGGTGCCTGCAACCCAGACTGTGCAGAGAACCGGGTCAAAGCAGCTGGAG
 AAGGTTGAGGAGGTAGAGGAGGACTCCGAAGTGTGCTGGTTCGGAGAAAGAGAAGGACGTTATGCCGAAAG
 GACCCGTGCAGGAAGCTGGAGCTGAGCATCTTGCACAGGGCTCTGAGACTGGACAGGCTACTCCAGAGAG
 CTTGAAGTTCCTGAAGTACAGCAGATGTAGACCATGTCGCCACGTGCCAGTTATCAAGCTCCAGCAG
 CTGATGGAACAGGCCGTGGCCCCGAGTCTCCGAAACCTTGACAGACAGTGAAGCAAAATGGAAGCACTC
 CCTTAGCAGATTCAGACACTGCAGATGGGACACAGCAAGATGAAACCTTGACAGCCAGGACAGTAAAGC
 CACTGCAGCTGTCAGGCAGTACAGGTCACAGAAGAAGAGGCGGCTACTGCTCAGAAAGAGGAGCCTTCG
 AACTACCTAATAATGTTCCAGCCCAGGAAGAATGAGGGAAGAACAGGAGAGATGTTCTTGAACCTA
 CACAGCAAGAGCTTGTGCTGCAGCCGTGCCGTTCTGGCAAAGACTGAGGTGGGTCAAGAGGGTGAAGT
 TGAAGTGGTGGATGGAGAAAAAGTCAAAGAAGAACAGGAGGTGTTGTACTCTGGACCCAACAGTCAA
 AAGGCTGCTGATGTGACATATGACAGTGAAGTGTGGGAGTGGCCGGGTGTCAGGAAAAGGAGAGTACTG
 AAGTGCAGAGTCTTAGCCTGGAGGAGGGAGAGATGGAAACTGACGTTGAAAAGGAGAAAAAGGGAGACAAA
 GCCAGAGCAAGTGAAGTGAAGAAGGTGAGCAGGAAACAGCCGCTCCTGAGCATGAAGGAACCTACGGGAA
 CCAGTCTGACACTTGACATGCCAGCTCAGAGAGGGGGAAGGCACTGGGAAGCCTTGGAGGAAGCCCTT
 CTCTCCAGACCAAGACAAAAGCAGGTTGCATAGAGGTTCAAGTTCAAAGCCTGGACACAACAGTCACTCA
 AACAGCAGAAGCTGTGAAAAGGTATAGAAACGGTGTGATTTCAAGAGACAGGTGAAAGTCCAGAGTGT
 GTAGGTGCACACTTATTACCAGCTGAGAAGTCTCTGCAACGGGTGGCCACTGGACTTTCAGCATGCAG
 AGGACACGGTACCCTGGGGCCTGAGTCTCAGGCAGAATCCATCCAATCATAGTAACTCCTGCTCCTGA
 AAGCACCTACATCCTGACCTACAAGGAGAAAATAGCGCATCCCAGAGAGAGCGATCAGAGGAAGAGGAC
 AAGCCAGATGCTGGTCTGATGCTGACGGCAAGGAGAGTACAGCAATCGAAAAAGTCTCAAGGCTGAAC
 CTGAGATCCTGGAACCTTGAAGTAAAGAGCAACAAGATTGTGCTGAACGTCATTACAGACAGCCGTTGACCA
 GTTCGCACGTACAGAAACAGCCCCGAAACTCATGCTTATGATTACAGACCCAGGTTCTGCAATGCAG
 GCTGACAGCCAGGGAGCCCAACAGATGCTGGACAAAAATGAAAGTTGCCAAGATGAAACACCCAGTGCCG
 CAGCCCAGAGAGGACTTGAAGTCTGACCGTTCTGGAGGCATGGGCTCAGCCTCGGAAATGCTTCCGCG
 GCTTGCAGTTGAAAGCGCCGGTGTCAAAGTAAGCATTGAGAAGCTGCCTCCTCAACCCAAAGATCAAAG
 GAGCATGCTGCTGATGGCCCTCAGCTCCAAGCTTAGCCAGGCAGAGGCCAGTGCTCTGGAAACCTAA
 CCAAAGAATCCCCAGACCAACGGACCAAGGCTAACCAGAGGAGGGCGATGCCCCAAAAGTTGAGGTCCA
 GGAAGAAGAAATGTCTACCAAGTCAGTCAAAGAGAACAAGGCCAGGCAGAGAGGACCTGCAGGAGCCA
 AAGGGAGACCTGGCAGAATCC

ACGCGTACGCGGCCGCTCGAGCAGAAACTCATCTCAGAAGAGGATCTGGCAGCAAATGATATCCTGGATT
ACAAGGATGACGACGATAAGGTTAA

Protein Sequence:

>RR200266 representing NM_057103
Red=Cloning site Green=Tags(s)

MGAGSSTEQRSPEQPAGSDTPSELVLSGHGPAEASGAAGDPADADPATKLPQKNGQLSTVNGVAEQGDV
HVQEENQEGQEEVDEVDVQRESESDVREKDRVEEMAANSTAVEDITKDGQEEETSEIIEQIPASESNVEE
MVQPAESQANDVGFKKVFKVGFKFTVKKDKNEKSDTVQLLTVKKDEGEGAEASVAGGDHQPESVETAVG
ESASKESELKQSTEQEGLTKQEQSSTEIPLQAESDQAAEEEEAKDEGEEKQEKEPTKSPESPSPVSSSET
TSSFKFFFTHGWAGWRKTSFKKSKEDDLETAEKRKEQEAKEVDEEEKEKTEPASEEQEPAEDTDQARLS
ADYEKVELPLEDQVGDLEASSEEKCAPLATEVDFDEKMEAHQEVVAEVHVSTVEKTEEEQGGGGEAEGGVV
VEGTGESLPPEKLAEPQEVPEAEPAEELMKSREMCVSGGDHTQLTDLSPEEKLTPKHPEGIVSEVEMLS
SQERIKVQGSPLKFLSSGLKKLGGKQKGRGGGDEEPGEYQHIHTESPEADEQKGESSASSPEEP
EETTCLKGLAPQDGEAEEGTTSDGEKKREGITPWASFKKMVTPKRVRPSESDKEEELKVKSATL
SSTDSTVSEMQDEVKTVGEEQKPEEPKRRVDTSVSWEALICVGSKKRARKASSDDEGGPRTLGGDSHR
AEEASKDKEAGTDAVPASTQEQDQAQSSSPEPAGSPSEGEVSTWESFKRLVTPRKKSKSKLEEKAE
SVEQLSTEIEPSREESWVSIKFIIPGRRKKRADGKQEATVEDSGPVEINEDDPDVPVAVPLSEYDAVER
EKMEAQNAELPQLLGAIVVSEELSKTLVHTVSVAVIDGTRAVTSVEERSPSWISASVTEPLEHTAGEAM
PPVEEVTEKDIIEAETPVLQTLPKDAHDDMTSEVDFTEAVTATETSEALRTEEVTEASGAETTD
MVSAVSQLTDSPTTTEATPVQVEGGVLDTEEEERQTQAILQAVADKVKESQVPATQTVQRTGSKALE
KVVEEVEDSEVLASEKEKDVMPKGPVQEAEGAHLAQGSETGQATPESLEVPVETADVHVATCQVIKLLQ
LMEQAVAPESSETLTDSETNGSTPLADSDTADGTQDETIDSQDSKATAAVRQSQVTEEEAATAQKEEPS
TLPNNVPAQEEHGEEPGRDYLEPTQQLAAAAPVLAKEVGEVQGEVWLDGKEVKEEQEVFVHSGPNSQ
KAADVTDSEVMGVAGCQEKESTEVQSLSEEGEMETDVEKEKRETKPEQVSEEGEQETAAPHEGTYGK
PVLTLDMPSSEKALGSLGGSPSLPDQKAGCIEVQVSLDTTVTQTAEAVEKVIETVVISETGESPEC
VGALLPAEKSSATGGHWTLQHAEDTVPLGPESQAESIPIVTPAPESTLHPDLQGEISASQRERSEED
KPDAGPDADGKESTAIEKVLKAEPEILELESKNKIVLNVITQAVDQFARTETAPETHAYDSQTQVPAMQ
ADSQGAQMLDKNESQDETPSAAAQRLASPDPSGGMGSAEMLAALAVESAGVKVSIKLPQPKDQK
EHAADGPQLQSLAQAEASASGNLTKESPDTNGPKLTEEGDAPKVEVQEEEMSTKSVKENKAQAEEDLQEP
KGDLAES

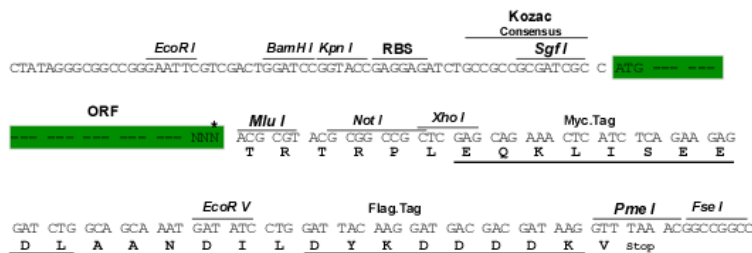
TRTRPLEQKLISEEDLAANDILDYKDDDDKV

Restriction Sites:

Sgfl-MluI

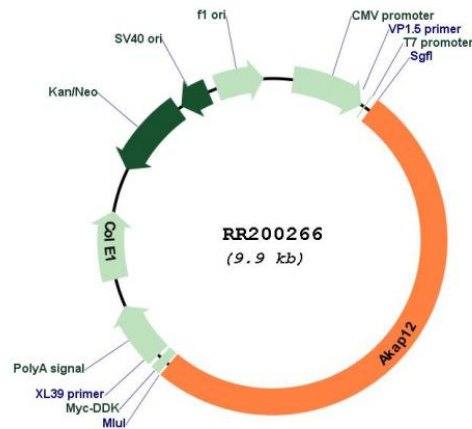
Cloning Scheme:

Cloning sites used for ORF Shuttling:



* The last codon before the Stop codon of the ORF

Plasmid Map:



ACCN: NM_057103

ORF Size: 5061 bp

OTI Disclaimer: The molecular sequence of this clone aligns with the gene accession number as a point of reference only. However, individual transcript sequences of the same gene can differ through naturally occurring variations (e.g. polymorphisms), each with its own valid existence. This clone is substantially in agreement with the reference, but a complete review of all prevailing variants is recommended prior to use. [More info](#)

OTI Annotation: This clone was engineered to express the complete ORF with an expression tag. Expression varies depending on the nature of the gene.

Components:	The ORF clone is ion-exchange column purified and shipped in a 2D barcoded Matrix tube containing 10ug of transfection-ready, dried plasmid DNA (reconstitute with 100 ul of water).
Reconstitution Method:	<ol style="list-style-type: none">1. Centrifuge at 5,000xg for 5min.2. Carefully open the tube and add 100ul of sterile water to dissolve the DNA.3. Close the tube and incubate for 10 minutes at room temperature.4. Briefly vortex the tube and then do a quick spin (less than 5000xg) to concentrate the liquid at the bottom.5. Store the suspended plasmid at -20°C. The DNA is stable for at least one year from date of shipping when stored at -20°C.
RefSeq:	<u>NM_057103.2</u> , <u>NP_476444.2</u>
RefSeq Size:	6255 bp
RefSeq ORF:	5064 bp
Locus ID:	83425
UniProt ID:	<u>Q5QD51</u>
Cytogenetics:	1q11
MW:	181.1 kDa
Gene Summary:	Anchoring protein that mediates the subcellular compartmentation of protein kinase A (PKA) and protein kinase C (PKC).[UniProtKB/Swiss-Prot Function]