

Product datasheet for **RR200256**

Synj2 (NM_001113372) Rat Tagged ORF Clone

Product data:

Product Type: Expression Plasmids
Product Name: Synj2 (NM_001113372) Rat Tagged ORF Clone
Tag: Myc-DDK
Symbol: Synj2
Vector: pCMV6-Entry (PS100001)
E. coli Selection: Kanamycin (25 ug/mL)
Cell Selection: Neomycin
ORF Nucleotide Sequence: >RR200256 representing NM_001113372
Red=Cloning site Blue=ORF Green=Tags(s)

TTTTGTAATACGACTCACTATAGGGCGGCCGGAATTCGTCGACTGGATCCGGTACCGAGGAGATCTGCC
 GCCCGATCGCC

ATGGCGCTGAGCAAAGGGCTGCGACTGCTGGCGGGCTGGACCCACGGCCCGAGCAGCGTGCTGCTGG
 AGGCGGGGGCCGCGGACTGTCTACTTTGAGGCCGGCGCGTGGCCACGCTGGCTCCGGAAGAGAA
 GGAAGTCATTAAGGACTGTATGGGAAGCCGACGGATGCCTATGGCTGCCTCGGGGAGCTGAGTTAAA
 TCCGGTGGCGTCCCTTGAGCTTTCTGGTGTGGTGACAGGCTGCACGTCAGTGGGCAGAATTCCAGATG
 CAGAGATCTACAAAATCACTGGCACTGAGTTTTACCCCTGCAGGAAGAGGCCAAGGAAGAGGACCGCT
 GCCAGCCTTGAAGAAAATCCTGAGTTCAGGGGTGTTCTATTTGCGATGGCCCAATGATGGCGCTGCTT
 GATCTGACCATCAGGGCTCAGAAACAGGGTGTGACTGCTCTGAATGGGGACCTCCTTCTTCTGGAACC
 AGCTATTGCATGTGCTCTGCGGCAGCACCAGGTGAAGTGTGACTGGTTGCTGAAAGTCATCTGTGG
 GGTGGTGACCATCCGCACGGTTTATGCCTCCACAAGCAGGCCAAGGCCTGTCTCATCTCTCGCATCAGC
 TGTGAACGCGCAGGTGCTCGCTTCTCACCGGGGTGTAACGACGATGGCCACGTGCCAAGTTGTGG
 AGACAGAGCAGGCGATTTACATGGATGATGGAGTGTGCTCCTTTGTCCAGATCCGAGGCTCCGTTCCGCT
 GTTCTGGGAGCAGCCAGGCTCCAGTTGGCTCCCATCATCTGAGACTGCACAGAGGCCTAGAGGCCAAC
 GCCCTGCTTTTGAAGGCACATGGTGCTTCTGAAGGAGCAGTACGGGCAGCAGGTGGTGGTGAACCTGC
 TGGGAAGCAGAGGCGGTGAGGAGGTGCTCAACAGAGCCTTCAAGAAGTTGCTCTGGGCTTCTTGCCACGC
 AGGCGACACGCCTATGATAAATTTGACTTCCATCAGTTTGCCAAAGGTAGGAAGCTAGAGAAAATGGAG
 AACCTGTTGAGACCTCAGTTAAACTACACTGGATGACTTTGGCGTATTTGCGAAGGGCGAGAATGTAA
 GTCCACGGTTTCAGAAAGGCACTCTGCGGATGAAGTGTCTGACTGTCTGGACAGAACCAACTGTACA
 GTGCTTCATTGCTCTTGAGGTGCTTCAATCTGCAGCTTGAAGCCATGGTCTGAAATGGGATGGCCTGAGCAAGGTGTTACAG
 GACGAGGCCCTGGAAGGAAAGGCCAAGGTGGGGAAGCTGAAGGATGGGGTAGATCCATGCTCTCGTAC
 CATCCAGTCCAATTTCTCGACGGGTGAAGCAGGAGGCCATCAAGCTACTGCTAGTTGGAGATGTCTAC
 AATGAAGAGTCTACAGACAAAGGCAGGATGCTGCTGGACAACACGGCCCTTCTGGGTTTGGGGTCAAATA
 AACAAAACAGTCTTTAGGCATGCTGGATGGAAAAGCAACACCCAGGATCCTGAAGGCCATGACAGAACG
 CCAGTCAGAATTCACAAATTTCAAGCGGATCCAGATTGCTATGGGACCTGGAATGTGAACGGAGGAAAA



[View online »](#)

CAATTCGGTAGCAATCTCTGGGGACCACTGAACTCACTGACTGGCTCCTGGATGCACCCAGCTCTCAG
GAGCAGTGGACTCTCAGGACGATGGCGGTCCCCTGACATATTTGCCGTGGGTTTGAGGAGATGGTGGA
GCTGAGTGCAGGAAATATTGTCAATGCCAGCACCACCAACAGGAAGATGTGGGTGAGCAGCTCCAGAAA
GCCATCTCCCGATCCCATCGGTACATCTCTTGACCTCAGCACAGCTGGTGGGCGTCTGTCTTTACATCT
TTGTACGTCCGTACCACGTCCCCTTCATCAGGGATGTGGCCATCGACACCGTGAAGACCGGATGGGGGG
AAAGGCAGGGAATAAGGGCGCCGTGGGTATCCGCTTTTCAGTTCCACAGCACTAGCTTCTGCTTCATCTGC
AGTCACCTGACGGCTGGGCAGTCTCAGGTGAAGGAGAGGAACGAAGACTACCGGGAGATCACGCACAAGC
TCTCCTTCCCTTCGGGGAGAAACATATTTTACACGATTATGTGTTTTGGTGTGGCGATTTCAACTACCG
CATCGATCTTACTACGAAGAAGTCTTCTATTTTGTAAACGCCAAGACTGGAAGAACTTATGGAATTT
GATCAGTTACAGTACAGAAATCAAGTGGGAAAATTTTTAAAGACTTTTCATGAAGGAACCATTAACCTCG
GACCCACCTACAAGTATGACGTTGGATCGGCTGCCTATGACACAAGTGACAAGTGCCGGACCCAGCCTG
GACAGACAGGGTCTGTGGTGGAGGAAGAAGCATCCGTACGATAAGACAGCTGGCGAACTCAACCTTCTA
GACAGTGTCTAGACGGTATGCCAACATCAGACATACCTGGTCTCCGGGCACTCTCAAGTACTACGGCC
GTGCCGAGCTGCAGGCATCTGATCACAGACCTGTCTGGCCATCGTAGAGGTGGAGGTTCAAGAGGTGCA
TGTGGGAGCCCGGAGAGAGTCTTCCAGGAAGTCTCTGTCCAAGGCCGCTGGACGCCACTGTTATT
GTAACCTTCAGTCTCCAACCTTGAAGAGAGAAATGAATTTCCAGAGGACTGCCGACAGAACTTATGC
AGACTTTGGGAATTATGGGACGATTATCTGGTCAAGCAAGGGCAGATGCTGGTGACATTTGC
AGACAGCCACTCAGTCTCAGTGTGCTGGATGTGGATGGTATGAAGGTGAAAGGCAGGGCCGTGAAGATT
CGACCAAGACCAAGATTGGCTAGAAGCTTGAGAGAGGAGCTCATTCCGAAGCGGGACAGCATGGCCC
CTGTGTCTCCACCGCAACTCTGCTTGTGGAGGAGAACTTTGACTTCAAGTCTGGACTATGAGTC
AGAAGGGGATGTTCTTGAAGATGATGAAGACTACTTAGCGGATGAGTTTGGTCAAGCTGTAGTCTCAGAC
AGTGAGCTTGGAGGAGCAGACTCTTCTGATACCATGAGCGCCTCGACACCTGCCAGCAAGTCTCCCGCAC
TGGTAAAAAGAAGCAACATCCAACGTACAAAGCTGGCTTAATGGTGAAGAAGTCTGCCTCAGATGCGTC
TATCTCCTCCGGAAACCCAGGGCAATATTTCCATCTTGCAGACCGGAAACTTCTTCCAGGAGCACCTCAG
CAACCGCCCAAGGCTCGAACTGGAATAAGTAAACCTTACAACGTCAAACAGATCAAAACCAACCAATGCTC
AGGAGGGCGAAGCAGCTATCCGGTGTCTCTGGAAGCTGGCGGAGGTGTCCAGAGTCAAGCCCGGGTGC
CACGCCCTGAGAAACCAAGGTCTTCTAAGCCAGAGGCTCCCTGGGGCTCCAGTCTACCGCGCCGG
CCTGTTCCAAGGGTTCCCACTATGAAGAAACCAACTTTGAGGAGAACAGGAAAGCCCATGTTATCAGAAG
AACAGTGTGAACAGCAGCCTGTCCATTTACAATGGCTTCCAGGAAATGAACCTTGAGACCCCTCCTCC
AATAACAGCTCCCATCCGCCTGTTCCCAACCAAGAACATTTACGCTGGGAGAGGTGTTGAGAGGAGG
CCGAGTGGTGGCAAGCCAGAACCGGATGACGCTCCTCCTGTGACAGGCGCTGTGGAGTTATCGTCTCCAG
AGGCCCCAGAGGCCCGTCCCTGGCTCCCAAGGTGCCTCCTAGGAGGAAGAAGTCTGCACCAGCAGCCTT
CCACCTGCAGGTCTGCAGAGCAACAGCAACTTCTGCAGGGCCTCACATGCTCCAGCAGTTCTCCGTCC
CCACCAAGCCTGACACCCCTGCTCTATCCGCAATGGCACTTGGCACTTCATCTGCTATAAGTCCCG
AACTGATGGCCCAGAGTGACGGAGCCCGAGGCAGCCTTTTTTCATGGCGATTACCCAGATCCCTTCTG
GAGCCTTCTCCACCACCCCAAGCTGTTGAATAATAACCTGGCTGTCCAAGAGCTCTGAGCCTTTAGAC
TTGGGGTCCAGGACCCCTGAGAGGACACACAGACTCAGCGCAGGTCAATGCATCAGTGGTTGAGAGGG
GGCTTCCACCAGCCATGGGGTAAAGACTTCACTCACTGGATGGCCGCCAGTAAACAAAGACAAGAGGAC
AACATTAGGCGTT

ACGCGTACGCGGCCGCTCGAGCAGAACTCATCTCAGAAGAGGATCTGGCAGCAATGATATCCTGGATT
ACAAGGATGACGACGATAAGGTTTAA

Protein Sequence:

>RR200256 representing NM_001113372
 Red=Cloning site Green=Tags(s)

MALSKGLRLLARLDPTGPSSVLLLEARGRGDCLLFEAGAVATLAPEEKEVIKGLYGKPTDAYGCLGELSLK
 SGGVPLSFLVLVTGCTSVGRIPDAEIIYKITGTEFYPLQEEAKEEDRLPALKKILSSGVFYFAWPNDGACF
 DLTIRAQKQGGDCSEWGT SFFWNQLLHVPLRQHVNCHDWLLKVICGVVTIRT VYASHKQAKACLISRIS
 CERAGARFLTRGVNDDGHVSNFVETEQAIIYMDDGVSFFVQIRGSVPLFWEQPLQVGSHELLRHRGLEAN
 APAFERHMYLLKEQYGGQVVVNL LGSRGEEVLNRAFKKLLWASCHAGDTPMINDFHQFAKGRKLEKLE
 NLLRPQLKLHWDDFGVFAKGENVSPRFQKGTLRMNC DCLDRTNTVQCFIALEVLHLQLESLGLNSKPIT
 DRFVESFKAMWSLNGHLSKVFTGSRALLEGKAKVGLKDGARMSRTIQSNFFDGVKQEAIKLLLVGDVY
 NEESTDKGRMLLDNTALLGLGSNKQNSLSGMLDGKATPRILKAMTERQSEFTNFKRIQIAMGTWNVNGGK
 QFRSNLLGTTELTDWLLDAPQLSGAVDSQDDGGPADIFAVGFEEVELSAGNIVNASTTNRKMWGEQLQK
 AISRSRHYILLTSAQLVGVCLYIFVRPYHVPFIRDVAIDTVKTMGGKAGNKGAVGIRFQFHSTFCFCIC
 SHLTAGQSQVKERNEDYREITHKLSFSPGRNIFSHDYVFWCGDFNYRIDLYEEVFYVVKRQDWKLMF
 DQLQLQKSSGKIFKDFHEGTINFGPTYKYDVGSAAYDTSKCRTPAWTDRVLWRRKKHPYDKTAGELNLL
 DSDLGDANIRHTWSPGLTKYYGRAELQADHRPVLAIVEVEVQVDVGARERVFQEVSSVQGPLDATVI
 VNLQSPTEERNEFPEDLRTELMTLGNYGTIILVRINQGQMLVTFADSHSALSVDVDGMKVKGRAVKI
 RPKTKDWLEGLREELIRKRDSMAPVSPTANSCLEENFDFTSLDYESEGDVLEDDEDYLADEFGQPVVSD
 SELGGDSSDTSASTPASKSPALAKKKQHPTYKAGLMVKKASDASISSGTHGQYSILQTAKLLPGAPQ
 QPPKARTGISKPYNVKQIKTTNAQEAEEAIRCLLEAGGGVPESAPGATPLRNQGSKPEASLGGPVLPRR
 PVPRVPTMKKPTLRRTGKPM LSEEQCEQP VHF TMASQEMNLETPPPITAPIPPVVKPRTFQPRGVERR
 PSGGKPEPDDAPPVTGAVELSSPEAPEAPSLAPKVP RRKKSAPAAFHLQVLQSNLQLGLTCCSSSSPS
 PPKPDTPLLYPQMALGTSSAISPETDGRVTEPEAASFHGDYDPDFWSSLHHPKLLNNNTWLSKSSEPLD
 LGSRTPERTHTDSAQVNASVVERGLPPDHGGKDFSHWMAASNKDKRTTLGV

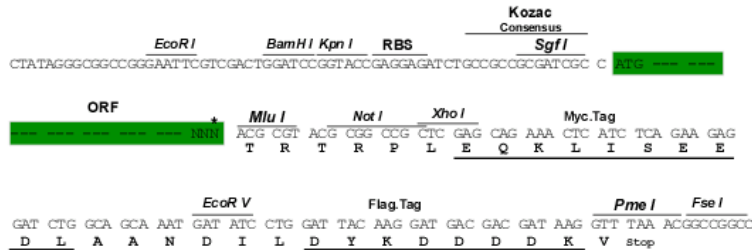
TRTRPLEQKLISEEDLAANDILDYKDDDDKV

Restriction Sites:

SgfI-MluI

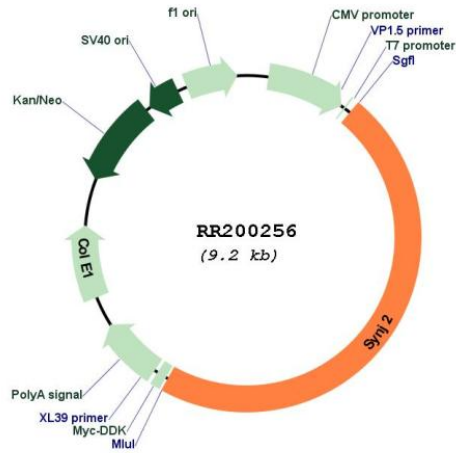
Cloning Scheme:

Cloning sites used for ORF Shuttling:



* The last codon before the Stop codon of the ORF

Plasmid Map:



ACCN: NM_001113372

ORF Size: 4353 bp

OTI Disclaimer: The molecular sequence of this clone aligns with the gene accession number as a point of reference only. However, individual transcript sequences of the same gene can differ through naturally occurring variations (e.g. polymorphisms), each with its own valid existence. This clone is substantially in agreement with the reference, but a complete review of all prevailing variants is recommended prior to use. [More info](#)

OTI Annotation: This clone was engineered to express the complete ORF with an expression tag. Expression varies depending on the nature of the gene.

Components: The ORF clone is ion-exchange column purified and shipped in a 2D barcoded Matrix tube containing 10ug of transfection-ready, dried plasmid DNA (reconstitute with 100 ul of water).

Reconstitution Method:

1. Centrifuge at 5,000xg for 5min.
2. Carefully open the tube and add 100ul of sterile water to dissolve the DNA.
3. Close the tube and incubate for 10 minutes at room temperature.
4. Briefly vortex the tube and then do a quick spin (less than 5000xg) to concentrate the liquid at the bottom.
5. Store the suspended plasmid at -20°C. The DNA is stable for at least one year from date of shipping when stored at -20°C.

RefSeq: [NM_001113372.1](#), [NP_001106843.1](#)

RefSeq Size: 4850 bp

RefSeq ORF: 4356 bp

Locus ID: 84018

UniProt ID: [O55207](#)

Cytogenetics: 1q11

MW: 160.2 kDa

Gene Summary: Inositol 5-phosphatase; may be involved in membrane trafficking and signal transduction pathways [RGD, Feb 2006]