

Product datasheet for RR200210L3

Rtn3 (NM_001009953) Rat Tagged Lenti ORF Clone

Product data:

Product Type:	Expression Plasmids
Product Name:	Rtn3 (NM_001009953) Rat Tagged Lenti ORF Clone
Tag:	Myc-DDK
Symbol:	Rtn3
Mammalian Cell Selection:	Puromycin
Vector:	pLenti-C-Myc-DDK-P2A-Puro (PS100092)
E. coli Selection:	Chloramphenicol (34 ug/mL)
ORF Nucleotide Sequence:	The ORF insert of this clone is exactly the same as(RR200210).
Restriction Sites:	Sgfl-MluI
Cloning Scheme:	

Cloning sites used for ORF Shuttling:



* The last codon before the Stop codon of the ORF.

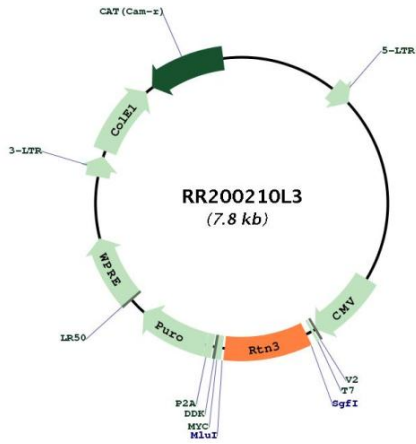
ACCN:	NM_001009953
ORF Size:	711 bp



[View online »](#)

OTI Disclaimer:	The molecular sequence of this clone aligns with the gene accession number as a point of reference only. However, individual transcript sequences of the same gene can differ through naturally occurring variations (e.g. polymorphisms), each with its own valid existence. This clone is substantially in agreement with the reference, but a complete review of all prevailing variants is recommended prior to use. More info
OTI Annotation:	This clone was engineered to express the complete ORF with an expression tag. Expression varies depending on the nature of the gene.
Components:	The ORF clone is ion-exchange column purified and shipped in a 2D barcoded Matrix tube containing 10ug of transfection-ready, dried plasmid DNA (reconstitute with 100 ul of water).
Reconstitution Method:	<ol style="list-style-type: none">1. Centrifuge at 5,000xg for 5min.2. Carefully open the tube and add 100ul of sterile water to dissolve the DNA.3. Close the tube and incubate for 10 minutes at room temperature.4. Briefly vortex the tube and then do a quick spin (less than 5000xg) to concentrate the liquid at the bottom.5. Store the suspended plasmid at -20°C. The DNA is stable for at least one year from date of shipping when stored at -20°C.
RefSeq:	NM_001009953.3 , NP_001009953.2
RefSeq Size:	2817 bp
RefSeq ORF:	714 bp
Locus ID:	140945
UniProt ID:	Q6RJR6
Cytogenetics:	1q43
Gene Summary:	This gene encodes a member of the reticulon family, a large group of membrane-bound proteins that primarily localize to the endoplasmic reticulum with a small subpopulation at the cell surface. These proteins play roles in endocytosis, exocytosis, trafficking and neuronal outgrowth. Proteins belonging to this family are characterized by a carboxy-terminal reticulon homology domain that consists of a small hydrophilic loop flanked by hydrophobic regions. In rat, this protein has been shown to interact with two members of the synaptic adhesion-like molecule family, suggesting that it may function in trafficking of these proteins. Alternative splicing results in multiple transcript variants. [provided by RefSeq, Mar 2015]

Product images:



Circular map for RR200210L3