

Product datasheet for **RR200194**

Fcer2 (NM_133550) Rat Tagged ORF Clone

Product data:

Product Type:	Expression Plasmids
Product Name:	Fcer2 (NM_133550) Rat Tagged ORF Clone
Tag:	Myc-DDK
Symbol:	Fcer2
Synonyms:	CD23; Fcer2a
Mammalian Cell Selection:	Neomycin
Vector:	pCMV6-Entry (PS100001)
E. coli Selection:	Kanamycin (25 ug/mL)
ORF Nucleotide Sequence:	>RR200194 representing NM_133550 Red=Cloning site Blue=ORF Green=Tags(s)

TTTTGTAATACGACTCACTATAGGGCGGCCGGAATTCGTCGACTGGATCCGGTACCGAGGAGATCTGCCGCC**CGATCGCC**

ATGGAAGAAAACGAATACTCAGGATACTGGGAGCCTCCTAGGAGACGATGCTGCTGTGCAAGACGGGGGACTCAGCTCGTGTGGTGGGGCTACTGACCACAGTAATGTGGGCTGGCTGCTGGCCCTGCTCCTTCTATGGCACTGGGAAACGGAGAAGAGTCTAAAACAGCTGGGAGACGCTGCAATCCAGAACGCTCTTCAGATGTCAAAAACCTTGAAGAGCTCCAAGCTGAACAGAAGCAAATGAAATCTCAGGACTCTCAGCTCTCCAGAACCTGAACGAACCTCCAAGAGGATCTAATCAACGTCAAATCCCAGAACCTGAACTCTCCAGAACCTGAACACACTCCAAGAGGATCTAGTCAACGTCAAATCCCAGGGCTTGAATGAGAAGCGCGGCCCTCAGATTCTGTGAGAAGCTACAGGAAGAGGTGGCAAAAACCTGGATTGAGATACTGATGTCAAAGGGAACGGCATGCAACGTGTGTCCCAAGGACTGGCTCCATTTCCAACAGAAGTGCTACTATTTCCGGTGAAGGGCTCCAAGCAGTGGATCCAGGCCAAGTTCACCTGCAGTGACCTGGAAGGACGGCTAGTCAGCATTACAGCCAGAAGGAGCAGGACTTCCTGATGCAACATATCAACAAGAAGGAGTCTGGATTGGTCTCCAGGATCTCAACATGGAGGGAGAGTTCGTATGGCCAGATGGGAGCCCCGTGGGTTATAGCAACTGGAGTCCAGGGGAGCCCAACAATGGGGGCCAGGGTGAGGACTGTGTATGATGCGGGGATCTGGCCAGTGGAAATGACGCCCTTCTGCCGAGCTACCTGGATGCCTGGGTGTGTGAGCAGCTGGCAACCTGTGACCTATCCGCCCTTAGCCTCTGTGACGCCAACAGGACCCACCCCAAGAATGAACCC

ACGCGTACGCGGCCGCTCGAGCAGAAACTCATCTCAGAAGAGGATCTGGCAGCAAATGATATCCTGGATTACAAGGATGACGACGATAAGGTTTAA



[View online »](#)

Protein Sequence: >RR200194 representing NM_133550
Red=Cloning site Green=Tags(s)

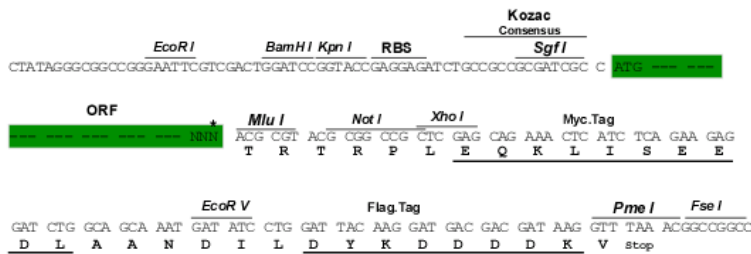
MEENEYSGYWEPPIRRRCCARRGTQLVLVGLLTTVMWAGLLALLLWHWETEKSLKQLGDAAIQNALQMS
 QNLEELQAEQKQMKSQDSQLSQNLNELQEDLINVKSQNSLSQNLNTLQEDLVNVKSQLNEKRAASDSL
 EKLQEEVAKLWIEILMSKGTACNVCPKDWLHFQKCYFGEKQWIKAKFTCSOLEGRLVSIHSQKEQD
 FLMQHINKKESWIGLQDLNMEGEFVWPDGSPVGYSNWSPGEPNNGGQGEDCVMMRGSQWINDAFCRSYLD
 AWWCEQLATCDLSAPLASVTPGTPKNEP

TRTRPLEQKLISEEDLAANDILDYKDDDDKV

Restriction Sites: SgfI-MluI

Cloning Scheme:

Cloning sites used for ORF Shuttling:



* The last codon before the Stop codon of the ORF

ACCN: NM_133550

ORF Size: 930 bp

OTI Disclaimer: The molecular sequence of this clone aligns with the gene accession number as a point of reference only. However, individual transcript sequences of the same gene can differ through naturally occurring variations (e.g. polymorphisms), each with its own valid existence. This clone is substantially in agreement with the reference, but a complete review of all prevailing variants is recommended prior to use. [More info](#)

OTI Annotation: This clone was engineered to express the complete ORF with an expression tag. Expression varies depending on the nature of the gene.

Components: The ORF clone is ion-exchange column purified and shipped in a 2D barcoded Matrix tube containing 10ug of transfection-ready, dried plasmid DNA (reconstitute with 100 ul of water).

Reconstitution Method:

1. Centrifuge at 5,000xg for 5min.
2. Carefully open the tube and add 100ul of sterile water to dissolve the DNA.
3. Close the tube and incubate for 10 minutes at room temperature.
4. Briefly vortex the tube and then do a quick spin (less than 5000xg) to concentrate the liquid at the bottom.
5. Store the suspended plasmid at -20°C. The DNA is stable for at least one year from date of shipping when stored at -20°C.

RefSeq: [NM_133550.2](#), [NP_598234.2](#)

RefSeq Size: 1962 bp

RefSeq ORF: 933 bp

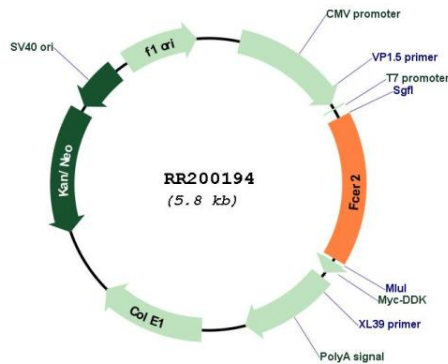
Locus ID: 171075

Cytogenetics: 12p12

MW: 35.1 kDa

Gene Summary: cell surface receptor; binds innumoglobulin (Ig)E and IgA antibodies [RGD, Feb 2006]

Product images:



Circular map for RR200194