

## Product datasheet for **RR200174**

### Cdk12 (NM\_001033867) Rat Tagged ORF Clone

#### Product data:

**Product Type:** Expression Plasmids  
**Product Name:** Cdk12 (NM\_001033867) Rat Tagged ORF Clone  
**Tag:** Myc-DDK  
**Symbol:** Cdk12  
**Synonyms:** Crk7; Crkrs; Pksc  
**Vector:** pCMV6-Entry (PS100001)  
**E. coli Selection:** Kanamycin (25 ug/mL)  
**Cell Selection:** Neomycin  
**ORF Nucleotide Sequence:** >RR200174 representing NM\_001033867  
Red=Cloning site Blue=ORF Green=Tags(s)

TTTTGTAATACGACTCACTATAGGGCGGCCGGAATTCGTCGACTGGATCCGGTACCGAGGAGATCTGCC  
GCCGGATCGCC

ATGCCAATTCAGAGAGACATGGGGCAAGAAGGACGGGAGTGGAGGAGCTTCTGGAACCTCGCAGCCGT  
 CATCGGGAGCGGCAGCTCCAACAGCAGGGAGCGTCACCGCTTGGTGTGCAAGCACAAGCGGCATAAGTC  
 CAAGCACTCCAAAGACATGGGGTTGGTAACCCCGAAGCGGCATCTTTGGGTACAATAATCAAACATTG  
 GTGGAGTATGATGACATCAGCTCTGATTAGACACCTTCTCAGATGACATGGCCTTCAAATCAGACAGGA  
 GGGAGAACGATGAACGTCGTGGAACGGATCGGAGTGACCGCTGCACAGACATCGTCACCACCAGACCCG  
 GCGGTCCCAGACTTGTAAAACTAAACAGACCGAAAAGGAAAAAACAGGAAGTCTCCAAATCTGGA  
 TCGATGAAGGACCGGTTATCAGGTAGTTCGAAACGTTTCAGTGGAGGGGAACGATGATTATGGGAAGGCAC  
 AATTATCCAAAAGCAGCAGCAAGGAATCCAGGTCGTCCAAATGCACAAAGAGAAGACCCGAAAGAACG  
 AGAGTTAAAGTCTGGACACAAGGACCGTAGTAAAAGTCATCGGAAAAGGGAAACCCAAAAGTTACAAA  
 ACGGTGGATAGCCCCAACGGAGATCTAGGAGTCCCATAGGAAATGGTCTGACAGTTCGAAGCAAGATG  
 ACAGCCCTCTGGAGCTTCTTATGGCCAAGATTACGATCTTAGCCCCCAAGGTCATACCTTCTAGCAA  
 TTATGACTCCTACAAGAAGAGTCCGGGAAGTACCTCAAGAAGGCAGTCAATCAGCCACCTTATAAAGAG  
 CCTTCTGCTTACCAGTCCAGCACTCGGTACCCAGTCCCTACAGCCGACGACAGAGGTGAGTGGCCCT  
 ATAGCCGGAGACGGTATCCAGCTATGAAAGGAGCGGTTCTTACAGCGGGAGATACCCAGCCCCTATGG  
 CCGAAGGCGATCTAGCAGCCCTTCTTGGAGCAAGAGGTCTCTGAGTGGAGTCCAATCTCCAGTAGGAAA  
 TCCATGAAGTCCAGAAGTAGAAGTCTGCATATCAAGACACTCATCTTACATAGTAAAAAGAAGCGAT  
 CCGGGTACGAAGTCGTATTCCAGCATCTCACCTGTGAGGCTTCCATTGAATCCAGCCTGGGAGCTGA  
 ACTCAGTAGAAAAAGAAGGAAAGAGCAGCTGCTGCAGCAGCAGCAAAATGGATGGAAAAGAAATCTAAG  
 GGTTACCTATAATTTTGCCTAAAAAGAGAAATTTGAGGTGAAGGAGTCAAGGTTAGAGTCAAAAAGT  
 TACCCAGAGGTATAAAGTCAAAAAATCTACCCAGATACTGAACTGGTAAATGTAGCACATTCAAACAC  
 AGAGGTAAAAAATGTTTAGATACAGGGAAAGTAAAGTTGGATGAGAAGTTCAGAAAGCATCCTGTTAAG  
 GATTTGAAAGCACAGGGAACAAAGGACACCAAACTGTAGCACTGAAGGAGGTGATTGTTACTTCAAAGG



[View online >](#)

AGACAGAGACATCAGAAAAGGAGGCCCTTCCACCTCTCCCCACAATAACTTCTCCACCCCTTTACCATC  
TACTACTCCTCCACCTCAGACACCCCTTTGCCACCTTTGCCTCCACTACCAGCTGTTCCACTGCAGCCA  
CCTTTGCCTCCTCCCAACCACCATTTAGTCAAGTTCTGTTTCAAATACTTCAACTTTACCCTCTTCTC  
CTCACCAAGGACATCTACTTTATCCTCTCAGACAAATTTCTCAGCCCCTGTACAGGTTTCTATGAAGAC  
TCAATTATCTGTAAACAGCTGCTATTCCACACCTGAAAACCTCAACATTGCCTCCTCTGCCCTCCCTCCC  
AAGAGCAGAGGACTCGCCACTTACTCACAGACTTGCCTTCTCCTGAGCTACCAGGTGGAGATCCATC  
TCCCCAGATTCTCCAGAGCCTAAAGCAATTACACCACCTCAACAACCATATAAAAAAGAGACAAAAAATT  
TGTTGTCCACGTTATGGAGAAAAGACAAACAGAAAAGTATTGGGGGAAGCGCTGCGTGGACAAGTTTG  
ACATTATTGGGATTATTGGAGAAGGAACCTATGGCCAAGTATATAAAGCCAAGGACAAAGACACAGGAGA  
ACTTGTAGCTCTGAAGAAGGTTGCGCTAGACAATGAGAAAAGGGCTTCCAATCACAGCCATCCGGGAG  
ATTAAGATTCTTCGTAGTTAGTTCATCAAAGTGTGTAACATGAAGGAGATTGCACAGACAAACAAG  
ATGCACCTGGATTTCAAGAAGGACAAAGGTGCCTTTTACCTTGTATTTGAATATATGGACCATGACTTAAT  
GGGACTGCTAGAATCAGGTTTGGTGCATTTTCTGAGGACCATATCAAGTCATTCATGAAACAGCTAATG  
GAAGGACTGGATTACTGTCAAAAAGAATTTCTCCATCGGGATATTAATGTTCTAACATTTTGTGTA  
ATAACAGTGGGCAAACTAACTGGCAGATTTTGGCCTTGCTCGGCTCTATAACTGGAAGAGAGTCGCC  
TTACACAAAACAAAGTCATTACTCTGTGGTATCGACCTCCAGAGCTGCTTCTTGGAGAGGAAAGATACACA  
CCAGCCATTGATGTTTGGAGCTGTGGGTGCATCCTTGGGGAACCTTTCACAAAAGAAACCTATTTTCAAG  
CCAATTTGGAACCTGGCTCAGCTAGAAGTATGATCGTCTCTGTGGTAGTCTTGTCCAGCAGTGTGGCC  
TGATGTTATCAAGCTGCCTACTTCAACACCATGAAACCGAAAAAGCAATACAGGAGACGCTAAGAGAA  
GAATCTCTTTTCACTTCCAGCGGCCTTGTCTGTTGGACCACATGCTGACTGATCTTAGCAAGC  
GCTGCACAGCGGAACAAACCTACAGAGTACTTTCTTAAAGATGTGGAACCTCAGCAAAATGGCACCTCC  
AGACTACTCTGAGGACTTGCATGAATTTGGAGTAAGAAACGTCGACGGCAACGACAAAAGTGGT  
ATTGTGATAGAAGAGCAACCTCCATCCAAAGCTTCTCGAAAAGAACTACCTCAGGGACAGCAGCTGAGC  
CTGTGAAGAACAGTAGCCAGCACCTCAACCTGCTCCTGTCAAGGCAGAGCCTGGTCCAGGGGATGC  
AGTAGGGCTTGGTACATCACACAGCAGTTGAATCAAAGTGAATGGCAGTGTATTAAACCTGCTTCAG  
AGCCAACTGACCTGAGCATCCCTCAGATGGCACAATTGCTTAACATCCACTCCAATCCAGAGATGCAAC  
AGCAGCTTGAAGCCCTGAATCAGTCTATTAGTGCAGTACTGAAGCCAGTCCCAGCAGCAAGACTCAGA  
ATCCATAGCCCCAGAGGAATCATTGAAGGAGGTACCTTCTGTATCTGTGGTCTGCTCCTGCTGAACAG  
ACAACCTCTGAAGCTTCAAACACACCAGCTGACATGCAGAATATGTTGGCAGTCTCTTGTAGTCACTGA  
TGAAAACCAAGAGCCAGCAGGTAACTGGAGGAAAACACCAGTGACAAGAATAGTGGGCCACAGGGGCC  
CCGAAGAACCCTACAATGCCACAGGAGGAGGCAGCAGCATGTCTCCTCACATTCTCCACCAGAGAAG  
AGGCCCTTGAACCCCTGGACCTCCACCGCCACCTCCACCCCTCTGGTTGAAGGGCATCTTTCCA  
GCGCCCCCAGGAGTTGAATCCCGCCGTGACAGCCGCTTGTGCAACTTTATCCAGCCTGAAGCAGA  
GCCTCCTGGCCACCTGCCACATGAGCACCAGGCCTTGAGACCAATGGAGTACTCCACTCGATCCCATCCA  
AACAGGACTTACGAAATACTGATGGCCCTGAAACAGGGTTTCACTGACACTGATGAACGCACTT  
CTGGTCCAGCCTTACAGAACTTTTGGTTCAGACCCTGGTGAAGAACAGGACCTTCTCAGGCTCTGTGAG  
CCACCTTGGGGAGTCCAACAGTTACCAGGGCACAGGGTCACTGCACTTCCAGGGGACCAGGACCTCCGT  
TTACTAGGGTTCCCTTAGCATTACACTCAGTGGTTGGGCAACCATTCCTGAAGTCTGAGGGAAAATAGCA  
ACTCTGTGGTACATGCAGAGACCAAAATGCAAACTATGGGGAGCTGGGACCAGGAACCACTGGGGCCAA  
CAGCTCAGGAACAACCTTCAAGTGGGGGGCCAGCTCAGTCTTTTGGAAAACCTACCGAGGGGCTGCA  
AGAGTCCACCACGAGGGGAAGAGGGAGGGGTTCTTAT

ACGCGTACGCGGCCGCTCGAGCAGAACTCATCTCAGAAGAGGATCTGGCAGCAATGATATCCTGGATT  
ACAAGGATGACGACGATAAGGTTTAA

Protein Sequence: >RR200174 representing NM\_001033867  
 Red=Cloning site Green=Tags(s)

MPNSERHGGKKDGGSGGASGTSQPSSGGGSSNSRERHRLVSKHKRHKSKHSDMGLVTPEASLGTIIKPL  
 VEYDDISSDSDTFSDMAFKSDRRENDERRGTDSDRLHRHRHHQHRRSRDLKTKQTEKEKNQEVSKSG  
 SMKDRLSGSSKRSVEGNDDYGKAQLSKSSSKESRSSKMHKEKTRKERELKSGHKDRSKSHRKRTPKSYK  
 TVDSPKRRSRSPHRKWSDSKQDDSPSGASYGQDYDLSPPRSHTSSNYDSYKKSPPGSTRRQSI SPPYKE  
 PSAYQSSSTRSPSPYSRRQRSVSPYSRRRSSYERSGSYSGRSPSPYGRRRSSSPFLSKRSLSRSPISSRK  
 SMKSRSRSPAYSRRSSSHKRRSGRSRHSISPVRLPLNSSLGAELSRKKKRAAAAAAALDGGKESK  
 GSPIILPKKEKFEVKESGLESKKLPRGIKSEKSTPDELNVVAHSNTEVKNCLDTGKVKLDENLQKHPVK  
 DLKAQGTKDKPVALKEVIVTSKETETSEKEALPPLPTITSPPLPSTTPPPQTPPLPPLPAVPLQP  
 PLPPPQPPFSQVPVSNSTLTPSSPHRTSTLSSQTNQPLVQVSMKTQLSVTAAIPHLKSTLPLPLPP  
 LLPGGDDMDSPKEMLPSPAKKEKEQRTRHLLTDLPLPELPGGDPSPDSEPKAITPPQPPYKRRPKI  
 CCPRYGERRQTESDWGKRCVDKFDIIGIIGEGTYGQVYKAKDKDTGELVALKKVRLDNEKEGFPITAI  
 IKILRQLVHQSVNMKEIVTDKQDALDFKKDKGAFYLVFEYMDHDLMGLLESGLVHFSEDHIKSFMKQLM  
 EGLDYCHKKNFLHRDIKCSNILLNNSGQIKLADFLARLYNSEESRPYTNKVITLWYRPELLLLGEERYT  
 PAIDVWSCGICL GELFTKKPIFQANLELAQLELISRLCGSPCPAVWPDVIKLPYFNTMKPKKQYRRRLRE  
 EFSFIPSAALDLLDHMLTLDPSKRCTAEQTLQSDFLKDVLSKMAPPDLPHWQDCHELWSKRRRRRQSG  
 IVIEEQPPSKASRKETTSGTAAEPVKNSSPAPPQAPVKAEPGPGDAVGLGDITQQLNQSELAVLLNLQ  
 SQTDL SIPQMAQLLNIHSNPEMQQLEALNQSISALTEASSQQQDSESIAPESLKEVPSVSVLPPAEQ  
 TTPEASNTPADMQNMLAVLLSOLMKTQEPAGNLEENTSDKNSGPQGRRTPTMPQEEAACPPHILPPEK  
 RPPPEPPPPPPPPPPPLVEGDLSSAPQELNPAVTAALLQLLSQPEAEPGHLPEHQALRPMEYSTRSHP  
 NRTYVNTDGPETGFSATDTERSSGPALTESLVQTLVKNRTFSGSVSHLGESENYSYQGTGSVQFPGDQDLR  
 FTRVPLALHSVVGQPFLLKSEGNNSVVHAETKLQNYGELGPGTTGANSSTTLQWGGPAQSF GKPYRGAA  
 RVPPRGGGRGVVY

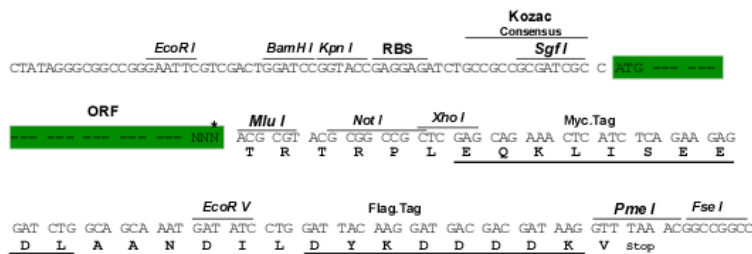
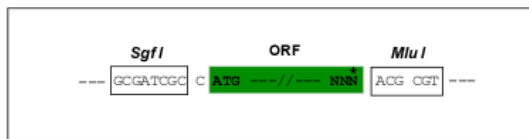
TRTRPLEQKLISEEDLAANDILDYKDDDDKV

Restriction Sites:

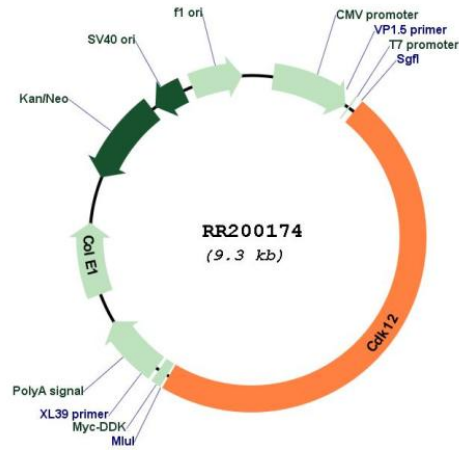
SgfI-MluI

Cloning Scheme:

Cloning sites used for ORF Shuttling:



\* The last codon before the Stop codon of the ORF

**Plasmid Map:**


**ACCN:** NM\_001033867

**ORF Size:** 4452 bp

**OTI Disclaimer:** The molecular sequence of this clone aligns with the gene accession number as a point of reference only. However, individual transcript sequences of the same gene can differ through naturally occurring variations (e.g. polymorphisms), each with its own valid existence. This clone is substantially in agreement with the reference, but a complete review of all prevailing variants is recommended prior to use. [More info](#)

**OTI Annotation:** This clone was engineered to express the complete ORF with an expression tag. Expression varies depending on the nature of the gene.

**Components:** The ORF clone is ion-exchange column purified and shipped in a 2D barcoded Matrix tube containing 10ug of transfection-ready, dried plasmid DNA (reconstitute with 100 ul of water).

**Reconstitution Method:**

1. Centrifuge at 5,000xg for 5min.
2. Carefully open the tube and add 100ul of sterile water to dissolve the DNA.
3. Close the tube and incubate for 10 minutes at room temperature.
4. Briefly vortex the tube and then do a quick spin (less than 5000xg) to concentrate the liquid at the bottom.
5. Store the suspended plasmid at -20°C. The DNA is stable for at least one year from date of shipping when stored at -20°C.

**RefSeq:** [NM\\_001033867.1](#), [NP\\_001029039.1](#)

**RefSeq Size:** 5502 bp

**RefSeq ORF:** 4455 bp

**Locus ID:** 192350

**UniProt ID:** [Q3MJK5](#)

**Cytogenetics:** 10q31

**MW:** 163.8 kDa

**Gene Summary:** human homolog may play a role in regulation of transcription and splicing [RGD, Feb 2006]