

## Product datasheet for **RR200149**

### **Snx27 (NM\_001110151) Rat Tagged ORF Clone**

#### **Product data:**

|                    |   |
|--------------------|---|
| Product Type:      | Expression Plasmids                       |
| Product Name:      | Snx27 (NM_001110151) Rat Tagged ORF Clone |
| Tag:               | Myc-DDK                                   |
| Symbol:            | Snx27                                     |
| Synonyms:          | Mrt1                                      |
| Vector:            | pCMV6-Entry (PS100001)                    |
| E. coli Selection: | Kanamycin (25 ug/mL)                      |
| Cell Selection:    | Neomycin                                  |



[View online »](#)

**ORF Nucleotide Sequence:**

>RR200149 representing NM\_001110151  
 Red=Cloning site Blue=ORF Green=Tags(s)

TTTTGTAATACGACTCACTATAGGGCGGCCGGAATTCGTGACTGGATCCGGTACCGAGGAGATCTGCC  
 GCC**CGCATCGCC**

ATGGCGGACGAGGACGGGAAGGGATTACCCCTCAGCCCGCACCGAATGGAGCGGCGCGGGGGT  
 CTGGGCTCCACTGCGCCGGAACGGTGGCGGGGAGCGCGGCCCGCGGGTCTGCGCATTGTCAAGTC  
 CGAATCCGGCTACGGCTCAACGTGCGGGGCCAAGTGTAGCAGAGGGCGGGCAACTGCGGAGCATCAACGGG  
 GAGCTGTACGCGCCGCTGCAGCATGTGAGCGCCGTGCTGCCGGGGGGCGGGCCACCGGGCGGGGTG  
 GCAAGGGGACCATCTGGAGGTGAACGGCGTGAATGTTGAGGGGGCAGACACAAGCAGGTGGTGA  
 CCTGATCCGAGCAGGCGAGAAGGAATTGATCTTGACAGTGTGTCTGTACCTCCTCATGAGGCTGATAAC  
 CTAGACCCAGTGACGACTCCTGGGACAATCATTTTATGATTACACAGAAAAGCAAGCAGTGCCCATAT  
 CGGTCCCCACATACAAACATGTGGAGCAGAATGGTGAGAAATTTGTTGTTACAATGTTTATATGGCCGG  
 GAGGCAGCTGTGTCTAAGCGGTACCGGGAGTTGCCATTCTGCACCAAAACCTGAAGAGAGAGTTTGCC  
 AACTTTACATTTCTCGACTTCCAGGAAAGTGGCCATTCTCATTATCAGAGCAACAGTTAGATGCCCGGC  
 GTCGGGGTTGGAAGAATATCTAGAAAAGTGTCTCCATCCGAGTCATTGGTGAGAGCGACATCATGCA  
 GGAGTTCCTGTGAGAATCTGATGAGAATTAACAATGGTGTGTCTGATGTGGAGCTGAGAGTAGCATTACCA  
 GATGGAGCAACTGTTACTGTGAGTAAAAAAGAACAGCACACAGCAAGTGTACCAGGCTATTGCA  
 CAAAGTTGGCATGGACAGTACAACAGTGAAGTACTTTGCCTATTTGAAGTCATCAATCATTCTTTGT  
 ACGTAAGTGGCCCTAATGAATTTCTCATAAACTGTACGTCCAGAATTACACATCAGCTGTGCCAGGC  
 ACCTGCCTGACCATTGCAAGTGGCTCTTACCACAGAAGAAGAAGTCTCTTAAATGACAATGACCTTG  
 CTGTACAGTACTCTTTTCATCAGGCTGTGATGATGTAAGAAAGTTACATTAAGCGGAGGAGAAGT  
 TTACCAGTTACAGAAGCTGTATGAACAAAGGAAGTGGTATGACCTCAACATGCTAAGGACCTGTGAG  
 GGCTACAATGAAATCATCTTCCTCACTGTGCCTGCGACTCCAGGAGGAAGGGGCATGTTATCAGACCA  
 TCAGCATCACGACTTTAACTTCATGCCTGCACTGAAGAAGGGCAGCTGGAGAACCAGGTAATAGCGTT  
 TGAATGGGATGAGATGCAGCGATGGGACACAGACGAAGAAGGAATGGCCTTCTGTTTTGAATATGCACGA  
 GGAGAGAAGAAGCCTCGATGGGTAAAACTTCACACCATATTTCAATTACATGCATGAGTGCTTTGAGA  
 GGGTGTTCTGCGAGCTCAAGTGGAGAAAAGAGAATATTTCCAGATGGCAGGTACAACAGAGGGATGT  
 GGCCACC

ACGCGTACGCGCGCGCTCGAGCAGAACTCATCTCAGAAGAGGATCTGGCAGCAAATGATATCCTGGATT  
 ACAAGGATGACGACGATAAGGTTTAA

**Protein Sequence:**

>RR200149 representing NM\_001110151  
 Red=Cloning site Green=Tags(s)

MADEDGEGIHPSAPHRNGGGGGGSLHCAGNGGGGGGPRVVRIVKSESGYGFNVRGQVSEGGQLRSING  
 ELYAPLQHVSAVLPGGAADRAGVRKGDRILEVNGVNVGATHKQVVDLIRAGEKELILTVLSVPPHEADN  
 LDPSDDSLGQSFYDYTEKQAVPISVPTYKHVEQNGEFVYVNVYVMAGRQLCSKRYREFAILHQNLRKFA  
 NFTFPRLPWKWPFSLSEQLDARRRGLLEEYLEKVCIRVIGESDIMQEFLESDENYNGVSDVELRVLP  
 DGATVTVRVKKNSTTDQVYQAIAAKVGMDSTTVNYFALFEVINHSFVRKLAPNEFPHKLYVQNYTSAPV  
 TGLTIRKWLFTTEEVLLNDNLAVTYFFHQAVDDVKKGYIKAAEESYQLKLYEQRMVYLNMLRTECE  
 GYNEIIFPHCACDSRRKGVITAISITHFKLHACTEENQVIAFEWDEMQRWDTDEEGMAFCFEYAR  
 GEKKPRWVKIFTPYFNYMHECFERVFCELEKWRKENIFQMARSQRDVAT

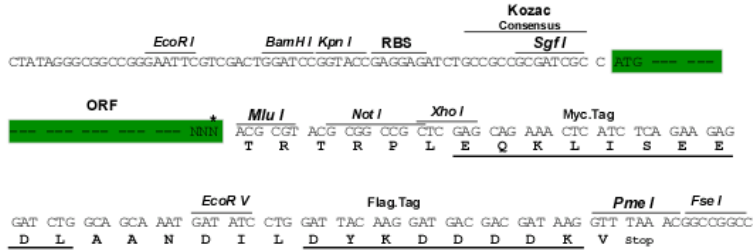
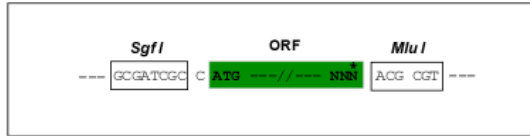
TRTRPLEQKLISEEDLAANDILDYKDDDDKV

**Restriction Sites:**

SgfI-MluI

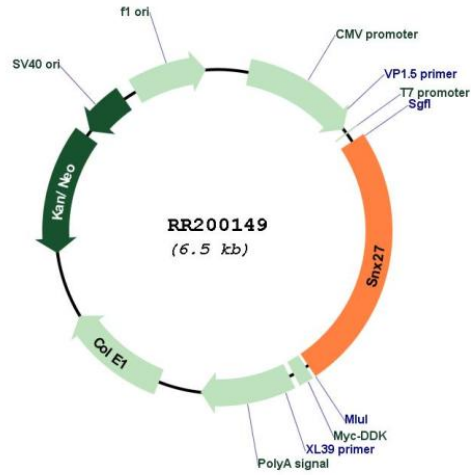
Cloning Scheme:

Cloning sites used for ORF Shuttling:



\* The last codon before the Stop codon of the ORF

Plasmid Map:



|                               |   |
|-------------------------------|---|
| <b>ACCN:</b>                  | NM_001110151  |
| <b>ORF Size:</b>              | 1617 bp   |
| <b>OTI Disclaimer:</b>        | The molecular sequence of this clone aligns with the gene accession number as a point of reference only. However, individual transcript sequences of the same gene can differ through naturally occurring variations (e.g. polymorphisms), each with its own valid existence. This clone is substantially in agreement with the reference, but a complete review of all prevailing variants is recommended prior to use. <a href="#">More info</a>  |
| <b>OTI Annotation:</b>        | This clone was engineered to express the complete ORF with an expression tag. Expression varies depending on the nature of the gene.  |
| <b>Components:</b>            | The ORF clone is ion-exchange column purified and shipped in a 2D barcoded Matrix tube containing 10ug of transfection-ready, dried plasmid DNA (reconstitute with 100 ul of water).  |
| <b>Reconstitution Method:</b> | <ol style="list-style-type: none"><li>1. Centrifuge at 5,000xg for 5min.</li><li>2. Carefully open the tube and add 100ul of sterile water to dissolve the DNA.</li><li>3. Close the tube and incubate for 10 minutes at room temperature.</li><li>4. Briefly vortex the tube and then do a quick spin (less than 5000xg) to concentrate the liquid at the bottom.</li><li>5. Store the suspended plasmid at -20°C. The DNA is stable for at least one year from date of shipping when stored at -20°C.</li></ol> |
| <b>RefSeq:</b>                | <a href="#">NM_001110151.1</a> , <a href="#">NP_001103621.1</a>   |
| <b>RefSeq Size:</b>           | 5409 bp   |
| <b>RefSeq ORF:</b>            | 1620 bp   |
| <b>Locus ID:</b>              | 260323  |
| <b>UniProt ID:</b>            | <a href="#">Q8K4V4</a>  |
| <b>Cytogenetics:</b>          | 2q34  |
| <b>MW:</b>                    | 61 kDa  |
| <b>Gene Summary:</b>          | may play a role in neuronal adaptation [RGD, Feb 2006]  |