

## Product datasheet for RR200144L3

### Tdrd5 (NM\_001134739) Rat Tagged Lenti ORF Clone

#### Product data:

Product Type:	Expression Plasmids
Product Name:	Tdrd5 (NM_001134739) Rat Tagged Lenti ORF Clone
Tag:	Myc-DDK
Symbol:	Tdrd5
Synonyms:	MGC188201
Mammalian Cell Selection:	Puromycin
Vector:	pLenti-C-Myc-DDK-P2A-Puro (PS100092)
E. coli Selection:	Chloramphenicol (34 ug/mL)
ORF Nucleotide Sequence:	The ORF insert of this clone is exactly the same as(RR200144).
Restriction Sites:	SgfI-RsrII
Cloning Scheme:	

Cloning sites used for ORF Shuttling:



\* The last codon before the Stop codon of the ORF.

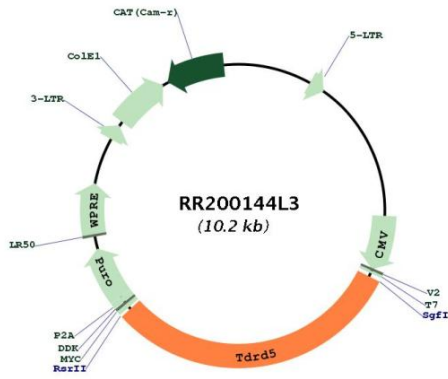
ACCN:	NM_001134739
ORF Size:	3138 bp



[View online >](#)

<b>OTI Disclaimer:</b>	The molecular sequence of this clone aligns with the gene accession number as a point of reference only. However, individual transcript sequences of the same gene can differ through naturally occurring variations (e.g. polymorphisms), each with its own valid existence. This clone is substantially in agreement with the reference, but a complete review of all prevailing variants is recommended prior to use. <a href="#">More info</a>
<b>OTI Annotation:</b>	This clone was engineered to express the complete ORF with an expression tag. Expression varies depending on the nature of the gene.
<b>Components:</b>	The ORF clone is ion-exchange column purified and shipped in a 2D barcoded Matrix tube containing 10ug of transfection-ready, dried plasmid DNA (reconstitute with 100 ul of water).
<b>Reconstitution Method:</b>	<ol style="list-style-type: none"><li>1. Centrifuge at 5,000xg for 5min.</li><li>2. Carefully open the tube and add 100ul of sterile water to dissolve the DNA.</li><li>3. Close the tube and incubate for 10 minutes at room temperature.</li><li>4. Briefly vortex the tube and then do a quick spin (less than 5000xg) to concentrate the liquid at the bottom.</li><li>5. Store the suspended plasmid at -20°C. The DNA is stable for at least one year from date of shipping when stored at -20°C.</li></ol>
<b>RefSeq:</b>	<a href="#">NM_001134739.1</a> , <a href="#">NP_001128211.1</a>
<b>RefSeq Size:</b>	3393 bp
<b>RefSeq ORF:</b>	3141 bp
<b>Locus ID:</b>	289129
<b>Cytogenetics:</b>	13q22
<b>Gene Summary:</b>	This gene encodes a member of the tudor domain-containing protein family. Tudor domain-containing proteins regulate a variety of processes including RNA metabolism, histone modification, and the DNA damage response. The tudor domain commonly functions to link methylated arginine or lysine marks to downstream effector proteins. In mouse, this gene is expressed in the primordial germ cells and in male germ cells during embryogenesis. In addition, it is expressed in adult testis cells where the protein is a component of the intermitochondrial cement and chromatoid bodies. Loss-of-function mutations in mouse result in arrest of spermatogenesis. [provided by RefSeq, Mar 2015]

Product images:



Circular map for RR200144L3