

Product datasheet for **RR200124**

Hras (NM_001098241) Rat Tagged ORF Clone

Product data:

Product Type: Expression Plasmids
Product Name: Hras (NM_001098241) Rat Tagged ORF Clone
Tag: Myc-DDK
Symbol: Hras
Synonyms: c-H-ras; HRAS1
Vector: pCMV6-Entry (PS100001)
E. coli Selection: Kanamycin (25 ug/mL)
Cell Selection: Neomycin
ORF Nucleotide Sequence: >RR200124 representing NM_001098241
 Red=Cloning site Blue=ORF Green=Tags(s)

TTTTGTAATACGACTCACTATAGGGCGCCGGAATTCGTCGACTGGATCCGGTACCGAGGAGATCTGCC
 GCC**GCGATCGCC**

ATGACAGAATACAAGCTTGTGGTGGTGGGCGCTGGAGGCGTGGGAAAGAGTGCCTGACCATCCAGCTGA
 TCCAGAACCATTTGTGGACGAGTATGATCCACTATAGAGGACTCTACCGAAACAGGTAGTCATTGA
 TGGGGAGACGTGTTACTGGACATCTTAGACACAGCAGGTCAAGAAGAGTATAGTGCCATGCGGGACCAG
 TACATGCGCACAGGGGAGGGCTTCTCTGTGATTTGCCATCAACAACACCAAGTCTTTGAAGACATCC
 ATCAGTACAGGGAGCAGATCAAGCGGGTAAAGATTAGATGATGTCCAATGGTCTGGTGGGCAACA
 GTGTGACCTGGCCGCTCGCACTGTTGAGTCTCGGCAGGCCAGGACCTTGCTCGCAGCTATGGCATCCCC
 TACATTGAAACATCAGCCAAGACCCGGCAGGGTGTGGAGGATGCCTTCTACACACTAGTACGTGAGATTC
 GGCAGCATAAACTGCGGAAACTGAACCCGCTGATGAGAGTGGCCCTGGCTGCATGAGCTGCAAGTGTGT
 GCTGTCC

ACGCGTACGCGGCCGCTCGAGCAGAACTCATCTCAGAAGAGGATCTGGCAGCAAATGATATCCTGGATT
 ACAAGGATGACGACGATAAGGTTTAA

Protein Sequence: >RR200124 representing NM_001098241
 Red=Cloning site Green=Tags(s)

MTEYKLVVVGAGGVGKSALTIQLIQNHFVDEYDPTIEDSYRKQVVIDGETCLLDILDITAGQEEYSAMRDQ
 YMRTEGEGFLCVFAINNTKSFEDIHQYREQIKRVKSDDDVPMVLVGNKCDLAARTVESRQAQDLARSYGIP
 YIETSAKTRQGVEDAFYTLVREIRQHKLRKLNPPDESGPGCMSCCVLS

TRTRPLEQKLISEEDLAANDILDYKDDDDKV

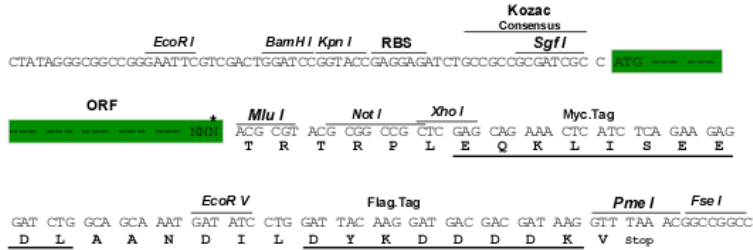
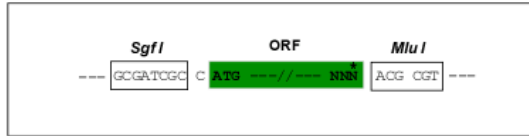
Restriction Sites: SgfI-MluI



[View online »](#)

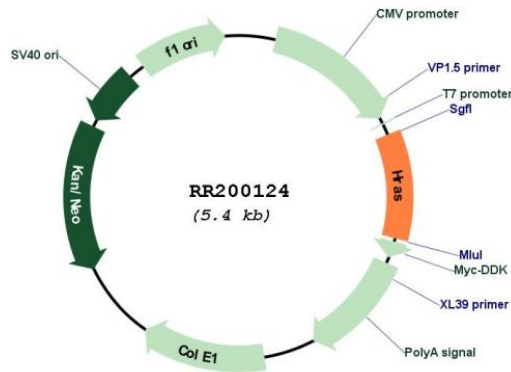
Cloning Scheme:

Cloning sites used for ORF Shuttling:



* The last codon before the Stop codon of the ORF

Plasmid Map:



ACCN: NM_001098241

ORF Size: 567 bp

OTI Disclaimer:	<p>Due to the inherent nature of this plasmid, standard methods to replicate additional amounts of DNA in E. coli are highly likely to result in mutations and/or rearrangements. Therefore, OriGene does not guarantee the capability to replicate this plasmid DNA. Additional amounts of DNA can be purchased from OriGene with batch-specific, full-sequence verification at a reduced cost. Please contact our customer care team at custsupport@origene.com or by calling 301.340.3188 option 3 for pricing and delivery.</p> <p>The molecular sequence of this clone aligns with the gene accession number as a point of reference only. However, individual transcript sequences of the same gene can differ through naturally occurring variations (e.g. polymorphisms), each with its own valid existence. This clone is substantially in agreement with the reference, but a complete review of all prevailing variants is recommended prior to use. More info</p>
OTI Annotation:	This clone was engineered to express the complete ORF with an expression tag. Expression varies depending on the nature of the gene.
Components:	The ORF clone is ion-exchange column purified and shipped in a 2D barcoded Matrix tube containing 10ug of transfection-ready, dried plasmid DNA (reconstitute with 100 ul of water).
Reconstitution Method:	<ol style="list-style-type: none"> 1. Centrifuge at 5,000xg for 5min. 2. Carefully open the tube and add 100ul of sterile water to dissolve the DNA. 3. Close the tube and incubate for 10 minutes at room temperature. 4. Briefly vortex the tube and then do a quick spin (less than 5000xg) to concentrate the liquid at the bottom. 5. Store the suspended plasmid at -20°C. The DNA is stable for at least one year from date of shipping when stored at -20°C.
RefSeq:	NM_001098241.1 , NP_001091711.1
RefSeq Size:	1392 bp
RefSeq ORF:	570 bp
Locus ID:	293621
UniProt ID:	P20171
Cytogenetics:	1q41
MW:	21.3 kDa
Gene Summary:	mutated in rats exposed to the carcinogen 2-amino-1-methyl-6-phenylimidazo[4;5-b]pyridine (PhiP); may be involved in the pathogenesis of chemically induced mammary tumors [RGD, Feb 2006]