

## Product datasheet for **RR200094**

### Irag1 (NM\_001105210) Rat Tagged ORF Clone

#### Product data:

|                    |   |
|--------------------|---|
| Product Type:      | Expression Plasmids                       |
| Product Name:      | Irag1 (NM_001105210) Rat Tagged ORF Clone |
| Tag:               | Myc-DDK                                   |
| Symbol:            | Irag1                                     |
| Synonyms:          | Mrvi1                                     |
| Vector:            | pCMV6-Entry (PS100001)                    |
| E. coli Selection: | Kanamycin (25 ug/mL)                      |
| Cell Selection:    | Neomycin                                  |



[View online »](#)

**ORF Nucleotide Sequence:**

>RR200094 representing NM\_001105210  
 Red=Cloning site Blue=ORF Green=Tags(s)

TTTTGTAATACGACTCACTATAGGGCGGCCGGGAATTCGTCGACTGGATCCGGTACCGAGGAGATCTGCC  
 GCC**CGGATCGCC**

ATGCCCCACATTCCTGAGGATGAGGAGCCCCCGGAGAGCCACAGGCAGCCAGACCCAAGACTCTCCCT  
 CTGCAGGACCGTTTTGCAGCCCTCCACAAATCATCCTGACGGGGATGCCAGTTCACCTGGAGGAGAGAC  
 TGACACAATCTGGTCAAGAGGGCTCCAGCCCCACCGCAGGCTTCCACCGACACCTGAAGGTCTCC  
 ACTGCCTCGTGACTTCTGTGGACCCCTTGGGGCAGTCATTGACCTGGTAAATGACCAGCTGCCGGACA  
 TCAGCATCTCAGAAGAGGACAAGAAGAAAACTGGCAGTCTCTAGAAGAAGCCAAGTTGGTTAGCGAGCG  
 GTTCTGACCCGCGGGGAGGAGATCAAGGAGCAGCCTCGGAGACGCCCATCAGCTGTTTCTCCAAAC  
 CTCAGCTCTGGAGCTTCTCCTGCATCCTTAGGAGTTGCTCGTTCACCATCTCCACACCACAGTTTTG  
 ACATATGACAGTGGCCACAGTCCCCTCTGCCGGGATCACCAGCACAGAAAAGGGACATGAGGATGATGT  
 CTTCTCGTCTCACCTCGGAGAGCCTAATGCCTCCAAAGGGCTAGCTGACCGGAAGCAGAATGACCAGAGG  
 AAAGTGTCTCAAGGCAGACTGGCTCCTCGCTCTCCACAGTGGAGAAATCCAAAGAACTTTCAGTAGAAC  
 AAAAGGAAAACTTCGATCCCCTTCAGCATCTGGAGGCCACACCCATGGCTCAGACCTCTGGAGCAAGCGT  
 CAGTGGGAAAAATGGCGTGAACAGTCCCAGCCTGGCCCTGCGGAGATGGAGCTGGGGAGGCAGCTTCTG  
 AAGACAGCCAGGGAAGACAACCCCTGCCCAGAACACAGTCCAGGGCTCAGGAGGAACGGCCTCCCCAC  
 ATTCTCAGGGACAGGGCTCTGCTGGAGAGCTTATGGGGCCCAAGGCTGGCTCCAAGGCTGAGCCGAGGCC  
 TCCTGTGTCCCGCCCCCTCTGATTCGGGGGTCTCCTGGGACAGCAGCCCTGAAGAACCTGGTCCCCTG  
 CTGAAAAGGTGCTCGTAAGCTGCCTCTGGCAGAGGAAGAAAAGCGGTTCCAGGCAAAGCCAAGCCAG  
 CCAAGCCACCGGGCTCAAAGACTTCAGATAACAAGTACAGCCGGTGCAGATGCAGAAGTACCAAGCT  
 TCGGGAGGAACACATCCTGATGAGAAACAGAACCTGGTGGGGTTCAAGCTCCCTGAACTGAGTGAAGCT  
 GCAGAGCAAGACAAGGAGTCTCATCTGAGCTTCCCCAGCAGCTGAGGAAGAAGAAATCAAAGAGTGGTC  
 TGGATGTGATGCCAACATTTCTGACATATTGCTACGTAACCTTAGGGTTCACAAGTCACTCACTGGAAG  
 CGCCCCTCGCTCACAGAAAAGGAGTGCAGAACGTGTTGTACAACCTGCTTGGCCTTTAGAAATGAC  
 AGCTACACCTTGGAGTCTAGGATTAACCAGGCTGAAAGGGAACGCAACTTGACGGAAGAGAACACCGAGA  
 AGGAACTGAAAACCTCAAAGCCTCTATTACGTCCTCAGCATCCATCTGGTACCCTGCGAGCACCGGGA  
 GACCTACCAGAAGCTTCTGGAAGACATCGCAGTCTTGATCGTCTGGCTGCACGCTCTCCAGCCGGCT  
 GAAGTGGTGGGTGCTGTGCGCCAGGAAAAGCGCATGTCAAAGGCCACGGAAGTATGATGCAGTATGTGG  
 AGAATCTGAAGAGAACGTACGAGAAGGACCATGCTGAGCTCATGGAATTTAAGAACTCGCAAATCAGAA  
 TTCTAGTCGCAGCTGTGGGCCCTCTGAAGACGGGGTTCCTCGCACGGCGCGATCTATGTCCCTCAGGATG  
 GGAAAGAACATGCCCCGTCGGAGGGTCAAGCTTGTGTTTCCCAAGTTAATGCCCTGAACCTGCCTG  
 GCCAAGCCCCAGCTCATACCCATGCCCTCTCTCCAGCTCTGTCTGAATCGACCAACGGGAGAAGCAG  
 CATCTCCACCTCTCCAGTGTGCTGCACTTTTGGAAAATGAAAAGACAATGCAGAGGCTAACTGTGAA  
 GTGTGCGCCCCTGTGCCACTCCCAAGCTACCGGAGGAGACGAGCCAAGAGGCCAAGGCCAGAGCAGAGG  
 AAGAAGCCTACAACAAGGATACCAGGAAGGGTAAAGAAGACCGAAGAACTTCAAGACCTGAAGGAGGA  
 GGAAGAGGAACAGAAGGCAGAGAGTCTCAGGAACCAGAAGAGTCAAGAAAACCCAGGAAGACGAGAAG  
 GACCAGGAAGCAGCAAACCTGAAGAAGTGGTCCACTTCTACAAGTATGATATCCCAAATTTGTGTAAC  
 ACTGGCAAGTATCTGGATGATGCCGCTGTGATGCTGGTCTTGAAGTGTGCTTGGGCTCTACAGTTC  
 CTATAACTCTGCACGGAGCAGGCCGACGGGCCCTGGGAGATCCACCTGCTCTGCAGCCAGCGGGAC  
 TCCTGGTGGAGCTCGGGACTCCAGCAAGAGCTGCCAGCAGAGCAG

**ACGCGT**ACGCGGCCGCTCGAGCAGAACTCATCTCAGAAGAGGATCTGGCAGCAAATGATATCCTGGATT  
 ACAAGGATGACGACGATAAGGTTTAA

**Protein Sequence:** >RR200094 representing NM\_001105210  
Red=Cloning site Green=Tags(s)

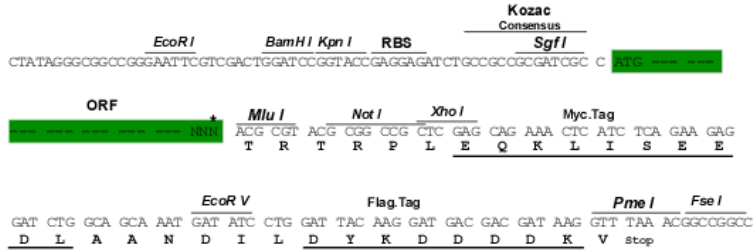
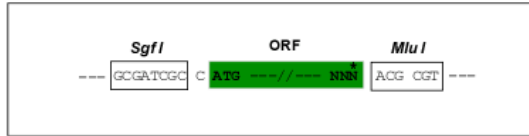
MPHIPEDDEPPGEPQAAQTQDSPSAGPFCSPPTIILTGDASSPGGETDTNLVKRAPSPHRRLSHRHLKVS  
TASLTSVDPLGHVIDLVNDQLPDISISEEDKKKNLALLEEAKLVSERFLTRRGRSRSSLGDAPSAVSPN  
LSSGASPASSRSCSFTISTPPGFDTCSGPQSPLPGSPAQQKGHEDDVFSHLGEPNASKGLADRKQNDQR  
KVSQGR LAPRSPTVEKSKEL SVEQKENFDPLQHLEATPMAQTS GASVSGKMALNSPQPGAEMELGRQLL  
KTAREDNPLPRTTVQGGGTASPHSQGQSAGELMGPKAGSKAEPRPPVSRPPLIRGVSWDSSPEEPGPL  
LQKVLAKLPLAEEEEKRFPGKAKPAKPPGLKDFQIQVQPVVMQKLTCLREEHILMRNQNLVGFKLPELSEA  
AEQDKGVSSELAPAAAAEESKGLDVMPIISDILLRKL RVHKS LTGSAPPLTEKEVENVFVQLSLAFRND  
SYTLESRI NQAERERNL TEENTEKELENFKASITSSASI WYHCEHRETYQK LLEDIAVLHRLAARLSSRA  
E VVGAVRQEKRM SKATEVMMQYVENLKR TYEKDHAELMEFKKLANQNSSRSCGPS EDGVPRTARSMSLTM  
GKNMPPRRVSVAVVPKFNALNLPQAPSSSPMPSLPALSESTNGRSSISTSPVLPALLENGKTNAEANCE  
VCAPVPLPSYPEETSQEA KARAAAAEAYNKGYQEGVKKTEELQDLKEEEEEQKAESPQEPEEVEETQEDEK  
DQRSSKLEELVHFLQVMYPKLCQHWQVIWMAAVMLVLSVVLGLYSSYNSCTEQADGPPGRSTCSAAQRD  
S WWS SGLQQELPAEQ

TRTRPLEQKLISEEDLAANDILDYKDDDDKV

**Restriction Sites:** Sgfl-MluI

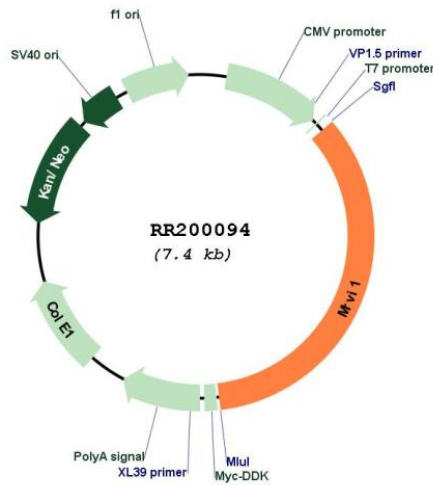
Cloning Scheme:

Cloning sites used for ORF Shuttling:



\* The last codon before the Stop codon of the ORF

Plasmid Map:



|                               |  |
|-------------------------------|--|
| <b>ACCN:</b>                  | NM_001105210   |
| <b>ORF Size:</b>              | 2565 bp  |
| <b>OTI Disclaimer:</b>        | The molecular sequence of this clone aligns with the gene accession number as a point of reference only. However, individual transcript sequences of the same gene can differ through naturally occurring variations (e.g. polymorphisms), each with its own valid existence. This clone is substantially in agreement with the reference, but a complete review of all prevailing variants is recommended prior to use. <a href="#">More info</a>   |
| <b>OTI Annotation:</b>        | This clone was engineered to express the complete ORF with an expression tag. Expression varies depending on the nature of the gene.   |
| <b>Components:</b>            | The ORF clone is ion-exchange column purified and shipped in a 2D barcoded Matrix tube containing 10ug of transfection-ready, dried plasmid DNA (reconstitute with 100 ul of water).   |
| <b>Reconstitution Method:</b> | <ol style="list-style-type: none"><li>1. Centrifuge at 5,000xg for 5min.</li><li>2. Carefully open the tube and add 100ul of sterile water to dissolve the DNA.</li><li>3. Close the tube and incubate for 10 minutes at room temperature.</li><li>4. Briefly vortex the tube and then do a quick spin (less than 5000xg) to concentrate the liquid at the bottom.</li><li>5. Store the suspended plasmid at -20°C. The DNA is stable for at least one year from date of shipping when stored at -20°C.</li></ol>  |
| <b>RefSeq:</b>                | <a href="#">NM_001105210.1</a> , <a href="#">NP_001098680.1</a>  |
| <b>RefSeq Size:</b>           | 6182 bp  |
| <b>RefSeq ORF:</b>            | 2568 bp  |
| <b>Locus ID:</b>              | 308899   |
| <b>Cytogenetics:</b>          | 1q33   |
| <b>MW:</b>                    | 93.6 kDa   |
| <b>Gene Summary:</b>          | This gene is similar to a putative mouse tumor suppressor gene that is frequently disrupted by mouse AIDS-related virus (MRV). The encoded protein, which is found in the membrane of the endoplasmic reticulum, is similar to Jaw1, a lymphoid-restricted protein whose expression is down-regulated during lymphoid differentiation. Studies in mouse suggest that MRV integration at the homologous mouse gene induces myeloid leukemia by altering the expression of a gene important for myeloid cell growth and/or differentiation, and thus this gene may function as a myeloid leukemia tumor suppressor gene. Alternatively spliced transcript variants have been found for this gene. [provided by RefSeq, Nov 2013] |