

Product datasheet for RR200085L3

Cdc14a (NM_001107718) Rat Tagged Lenti ORF Clone

Product data:

Product Type:	Expression Plasmids
Product Name:	Cdc14a (NM_001107718) Rat Tagged Lenti ORF Clone
Tag:	Myc-DDK
Symbol:	Cdc14a
Mammalian Cell Selection:	Puromycin
Vector:	pLenti-C-Myc-DDK-P2A-Puro (PS100092)
E. coli Selection:	Chloramphenicol (34 ug/mL)
ORF Nucleotide Sequence:	The ORF insert of this clone is exactly the same as(RR200085).
Restriction Sites:	Sgfl-MluI
Cloning Scheme:	

Cloning sites used for ORF Shuttling:



* The last codon before the Stop codon of the ORF.

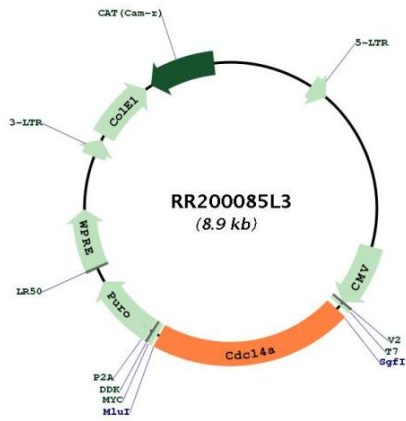
ACCN:	NM_001107718
ORF Size:	1878 bp



[View online >](#)

OTI Disclaimer:	The molecular sequence of this clone aligns with the gene accession number as a point of reference only. However, individual transcript sequences of the same gene can differ through naturally occurring variations (e.g. polymorphisms), each with its own valid existence. This clone is substantially in agreement with the reference, but a complete review of all prevailing variants is recommended prior to use. More info
OTI Annotation:	This clone was engineered to express the complete ORF with an expression tag. Expression varies depending on the nature of the gene.
Components:	The ORF clone is ion-exchange column purified and shipped in a 2D barcoded Matrix tube containing 10ug of transfection-ready, dried plasmid DNA (reconstitute with 100 ul of water).
Reconstitution Method:	<ol style="list-style-type: none">1. Centrifuge at 5,000xg for 5min.2. Carefully open the tube and add 100ul of sterile water to dissolve the DNA.3. Close the tube and incubate for 10 minutes at room temperature.4. Briefly vortex the tube and then do a quick spin (less than 5000xg) to concentrate the liquid at the bottom.5. Store the suspended plasmid at -20°C. The DNA is stable for at least one year from date of shipping when stored at -20°C.
RefSeq:	NM_001107718.2 , NP_001101188.2
RefSeq Size:	2613 bp
RefSeq ORF:	1881 bp
Locus ID:	310806
Cytogenetics:	2q41
Gene Summary:	The protein encoded by this gene is a dual-specificity phosphatase that preferentially dephosphorylates cyclin dependent kinase substrates to regulate the cell cycle. In human cell lines, this protein localizes to interphase chromosomes, and depletion of the transcript results in centrosome separation and cytokinesis defects. In mouse, the protein localizes to the nucleus of prophase I arrested oocytes and then becomes dispersed in meiotically competent oocytes. Knockdown of the protein delays exit from metaphase I and results in eggs with chromosomal abnormalities and elevated aneuploidy, demonstrating a function in regulation of meiosis. Alternative splicing results in multiple transcript variants. [provided by RefSeq, Mar 2015]

Product images:



Circular map for RR200085L3