

Product datasheet for **RG240255**

BAHCC1 (NM_001291324) Human Tagged ORF Clone

Product data:

Product Type: Expression Plasmids
Product Name: BAHCC1 (NM_001291324) Human Tagged ORF Clone
Tag: TurboGFP
Symbol: BAHCC1
Synonyms: BAH2
Mammalian Cell Selection: Neomycin
Vector: pCMV6-AC-GFP (PS100010)
E. coli Selection: Ampicillin (100 ug/mL)
ORF Nucleotide Sequence: >RG240255 representing NM_001291324.
Blue=ORF Red=Cloning site Green=Tag(s)

```
GCTCGTTTAGTGAACCGTCAGAATTTGTAAACGACTACTATAGGGCGGCCGGGAATTCGTCGACTG
GATCCGGTACCGAGGAGATCTGCCGCCGCGATCGCC
ATGGATGGCCGCGACTTTGCGCCGCCGCGCATCTGCTGTGCGAGCGCGGGAGCCTGGGCCACCGCAGC
GCCGCTGCCGCCGCGCGTCTCGCCCCGGCTGGGCCCGCCGCGCAGCCCCCGCACACTTCCAGCCGGGA
AAGTACTTCCCGTCGCCGTTGCCATGGCTTCGCACACAGCCAGCAGCCGCTGATGGGAAGTTCTCCG
GCCTCCTCGTTTATGGGCAGTTTCTCACCAGCAGCCTGGGCTCGGCAGCCTCCACGCACCCAGCGGC
CCCAGCTCTCCCCCTGAGCAGGCTACCGTGGCTCCCACCCACCACCTCCCAGATCTGTTTCTCC
CACTCCCACGAAGCTCCGGGTACCCAGATTTTCGGGGAGTCTGGCATCCACCTTCTACCCGTGAGC
CACTTGGATCACCATGGAAACAGCAACGTTCTCTATGGGCAGCACCGTTTCTATGGAACCCAAAAGAT
AACTTCTACCTGCGCAACCTGCCGCCAGCCACGCTGCTGCCGGCCAACCACAACCTTCCCAGCGTG
GCCCGGGCCGCCCTGCCACCCCATGGGCTCCTGCAGCCGGGATCGAGACCGGGGTGAGGCAGGCTCC
CTGCAGAAAGGCCCAAGGACTTCGACCGCTTCTCGTGGGCAAAGAGCTGGGCAGAGAGAAGGCGGGC
AAGGCCGCTGAGGGCAAGGAGCGGCCAGCGGCAGAGGAGGACGGTGGCAAGGAGCGGCACAAGCTGGTG
CTGCCCGTGCAGCCGACGGGACTGCAGGGAGGGCGGCCCGCACCCCGAGGGGCTGCGAGGGCCGC
CCCAAGCACCTCACCTCCTGCCTCCTCAACACCAAGGTGCTCAACGGCGAGATGGGCAGGGCTGCCTA
GCCAGCTGTGACGGGGCATGCTGGGGCGGCTGGCACGGGGTGGTACCTCCGGGCGCTGTGCAAAG
GAGGCAGCAGGCCCGCCGAGCCCGGGCGGCTTTCAGCGAGTGCCTGGAGCGGGCGAGATGCTACAC
CACACCGCATCCTACGCCGGGCCACCCCGCCCTCAGCACAGCCGCGGCTCCTTCCCCTGCCTGCAG
CTGCACGGGGCCCTGACGGGCTCTGCCGCTGCAGGACAAAGCCCGGGACCTAAAGGCCAGCGGG
CCCACCTTCTGCTTCTGTGGACACCTGGCCGACAAGGGCCGCCCTTCCAGGCCCGCGAGGCTGT
GCCGTGGCAGGGGAGGGCAAGGACCGGCACCTGGAGGGAACCATGGCCCCGACCACGCTGCACCTAT
GGAGTCTCCTATGCCACCTGAAGGCCGAGGGCAAGGGCAGCGGGCGCTGGGGCTTTGAGGCGGCC
CTCAACCCCGGCTAAAGGGCTCGACTATCTCAGCAGCGCAGGCCCGAGGCTCCTTCCCAGGACTC
CCTAAAAGCGGTCTGGACAAAAGCGGCTACTTCGAGTTGCCACCTTTCACAGGACTGTGCCCGGCT
```



[View online >](#)

GGTACCAGGACCCGCTGGGCGGAAGGCCCCAGGCCTGCTGCACTTTAGATAAGACTGTTGGCAAG
 GAAGCCCCGGCCGGCCCCAGGGGCACAGAAGGTGGCCCGCATCAGGCACCAGCAGCACTTGATGGCC
 GCCGAGGTGGAGCAGGGGGCATTGGGGCTGAGGCCAAGCGCAAGTCCCTGGAGCTGGCATCCCTGGGC
 TACAGTGGGCCCCACCTGCCCCATGGGGTGTCCAGGCAGGCCAGGGCACCGCCATGGCCATCAGCGAG
 GAGCGCAAGGCTGGCGCTACCTGGACCCTTTGGCAGTGGCTGCAGCAGGCGGCTCTTCTGCCCCAG
 GAACTGCCTGCGCCGCCGAGAGGTCTCAGCCATGAAGAACCTGCTCAAATACAGCAGCCAGGCCCTG
 GTGGTGGGCCAGAAAGCACCCCTTGGTGGCCCTGGTGGCCCAAGGCCAGTGCATCCAGCAGGAAGCA
 AAGTTCCTGTCCCTAAGGGCCAGGCCAGTCCGAGAGGGCCGACTGTGCCCGCAGCAGGGAGCACGAC
 ACCACGCACGGGACGGGGAGGTGCGGCAGCCCCCTGTGGGCATTGCAAGTGGCCTTGCCCCGCGAGAAG
 GACACAGTGAAGCCGTCTGAGGCAGCCTACGGCACCAACTGCGCGGCAGGGCCGGGCCCCCCGCC
 TTCAAAGTGGCGGTGGGCCCGTTCCACACACGCGTGGACCTGGAGGCTGAGGAGGAGAGGACGAGG
 CTATGTGATGACCGCTGGGGCTTGCCAGCCGCGAGCTGCTGCTGCAGGACAGCAAAGACCGCGTAGAG
 TTCGCCGGATCCACCCACCGAGCAGCTGCCCTGGGGACCTGGCCCCACCTCATGATGCAGAGCGGC
 CAGCTGGGCGGGACCCAGCCCCACACCCACCCCATCCCCCTGGCTGCCCGCACCCGACGCCCC
 TCCCTGTGGATGGGGGGCACTCTACGGCCTGGGGCACCTGCCCTGCACCAGAACCTGCCCCCCGGC
 TTCGCCGCTCCGTGGCTGGCCCTGTGCCCTGTCTTCCCCCTCCACAGGACGCCCCACACAGCTG
 GTCATCCTGCCCTCAGAGCCACACCCACAGCGCCCCACGCACTTGGGATGTCATGGACCAGGCG
 TCACTGTGGCCCCCATGTACGGGGGCCGGGCCCCGCCCTCTACATGCAGCACCAGGGCCAGCTCCCT
 GTGTAAGTGGAGCCGAGCTCCTCCGGCAGCAGGAGCTCTATGCTTGCAGCAGCAGAGGGCCGCCAG
 TTCCAGCGGAAGCCGAAGACCAGCACCTGGATCTGGAGGAGCCCGCCAGGAGAAGGCCCAAAGTCC
 ACCACAAGCCAGTTGCCTTAACCCCCAGGCCCGGGCGCCCCCTACCCGCTGCAGGCCCCACCAAG
 CTGCCACCTTGTGCCATCCGCCGACCCAAAGCCCCCGCCAGCTCCCCACCCACCACTCGGCC
 AGCGCCCGTGCCTTTAATGTCTGCCCTGCCAGCAGCCCCGGGCCCTGGCTCCCGGGTGGCAGGCC
 GAGGAAAAGAATGGGGAGGGTCAGCAGTCCACGGCCGACATCATACATCCGAACCAAGTGGCACGTGCT
 CACTCTGTTGCCACGCTGGTCTCGAATCCTGGCCTCAAATGATCCATCCACCTCAGCCTCCAAAGT
 TTTGGATTACAGACCTGCCTCCCGATACCTGCGCCCCATGGCTGGCCTGGGCTTCTCCCTACCCTCA
 GACGTGCACTTCTAACCTCGAGGACCCTGAAACTATGCAAACCACCGCCCCGGGGGCCAGCCTGAG
 CCCACAAGGACATTCTGCCTGGGGAGCCGCTCCCTGCAGCCCCAGGAGCTGGAGGAGCCGGGCTG
 CTCTCAGGGGCCAGGGAGGCCACCCAGGACCTTGGCGCCACCCCTACCTACCGAGCGGGACCCAG
 GGAAGGCAGCGGACCCAGCCACTAGAGGGGTACAAGAACTGCAATGTGCGGCCCTCTGGAGGCA
 GGGGGCCCGAGGCCACCGGCCAGGCTCATTCTACTCAGGGAGGGGCACGAGAAGAGAGGAGCAGGGAG
 GAGGGGAGCAGGGGCCCTCGTCAAGGGGCTCCTCCCAAGTCTGGAGCAGCAGGAGGAGTCCGGGT
 GCCCTGAGGACGAGGGGAGCAGCCGGCCCTGAGGAGGACGAGCTGGAGGAAGACGAGCTGGGGCAG
 CAGAGCATGGAGGACTCAGAGGAGGACTGTGGCGGAGCTCCCGACAACAGCCACCCACCCAGGGCGCTA
 CCAGGCCCTGGATGCCTTGGTGGCCGCCACCATCAACCTGGGGGACCTGCCAGGCAGAGCCACCGGAC
 CCTCAGCCCCAGCGCCTCTGGGCCCCCCAGCACAGTCCCCCTGCCTCATAGCTCAGGGATTATGGG
 ATCGCTGTCTCAGCGAGCTGGTGACCTGGCAATCCAGCGGCAGAGGAGTGAGAGGACTGTGCCAGAG
 GAGGAAGAGGACGTGCTAGCCTTCAACCTGCAGCAGCTGGCCAGCTGGCCACAGCCTGGTCCCTGGTG
 GAGGCCGCTGGCCTGGACAGCTCACTGCCAGCGCAGCCGCCACAGCCAACCCCTGCAGCGCCCC
 AGGCTCACCCCCGCATGCAGATCTGCAAGCGCAAGGACACCTGGACCCCCAAGACCAAGCCTGTGTGC
 CCCCTGAAGGCCCATCGACCGCTGGACACGAGGAGTGGGGATGCGCGTGGGCTGGCGGAGCTG
 CAGCGGCGCTACAAGGAGAAGCAGCGGGAGCTGGCCCGCTGCAGCGCAAGCAGCAGCATGAGAGAGAC
 GAGAGTTCACGGAGCCCTGCACGGCGGGGGCTGGCCGGCCGAGGAAGCGCAAACACTCAAGCTCGCTG
 CCTGCCACAGTCCCACGGGGCCGCTCCCAGGAGCGATGGCAAGAAAGTCAAGGCGGTGCGGACAAGC
 CTGGGTCTGTGTGCGGAGCTGCGAGGAGGAGTGGGGCGAGCCTGCGAAGAAGCGAAGCAAGCTG
 GAGAGGAGCGTCTATGCGGGCTGCAGACTGCCTCCGTGGAGAAGGCGCAGTGTAAAGAAGAGCAGCTGT
 CAGGGCGGGCTGGCGCCCTCCGTGGCCACAGGGTGGCCAGCTGAAACCAAGGTCAAGAGCAAAGGG
 CTGCCACAGGCCCTCAGCTCTTCCAGCAGAAGGAGGCTACCCCGGGGGGCGCATCCGGGAGAAGCTG
 TCCCGAGCCAAGAGTGCCAAGGTGTCTGGGGCCACACGGCACCCACAGCCCAAGGGCCACGGCAGCCGG
 GAGACACCCAGGTGCCAGCCAGCCCTCCGTGGCTGCGTCCCAGGAGGACAGGAGTGGCTATGACAGT
 GAGGACTGCGAGGGTCTCCTGGGGACAGAGGCACCACCCAGGGAAGCAGGGCTGCTGCTGCACCCGGG
 GCCAGTGTGGCCGTGCTGGGGCCCTCACCTCCTCTGTGGTCAAGATGGAGGCCAACCAGAAGGCCAAG

AAGAAGAAGGAGAGGCAGGGGTTGCTAGGGGCCTGCCGCCTGTCCAGCCCTGAGAGTGAGGTCAAGATC
 AAGAGGCGGTGCGTGAAGGCCAAGGTGGGCACCACCCTGGAGCGGGCCCCAGGGCAGAGGCCCCAGGT
 GCGCTGGGCAAGAAGAAAGCCAAGGGCAAGGCCAAGGGCAGCCTGCGGGCAGAGCCGGGGCCACCCCC
 AGCAGGGACGCCCTTTCAACCCCTCTCGGGCCTTCGCTGCCGTGAGGAGGGCAGCCAGCTGGCCAGT
 GAGCGCTCAAGAGGGCCACGCGCAAGGGCACAGTGTGCAGCCAGTGTGCGGGGAAGAACGGGGCC
 CTGTCCATCACGCTGGCCACACGCAACGCCAAGGCCATCTGGGAAGGGCCGGAAGCTGAGCAAGGTG
 AAGCACAAGGCCGGCAAGCAGGGCAAGGGCCGGCCGTGAGCCGCCTGCTGGAAGGCTTCGCCGTGGAG
 GAAGACTTTGAGTTCGACGACAACAGCAGCTTCTCGGAAGAGGAGGAGGACGAGGAGGAAGAGGAGGAG
 GACAGCGGCCCTCTGAGCGCAGAGCAGAGCGCCGCCCTAGCGCGCTCGTGTGCCATCCACAGGAGGAC
 CTGCGGGACGGGCTGCCCGTGTCTATCCCAAGGAGGATAGCCTGCTGTACGCGGGCAGCGTCAGGACC
 CTGCAGCCACCCGACATCTATAGCATCGTATCGAGGGCAGAGGGGCAACCGGCAGAGGATCTACTCA
 CTGGAGCAGTGTGCAGGAAGCGGTTCTCGATGTGCGGCCACAGTCCAGCCGTTACCTCCCGCCGGC
 ACGCGGTCTGCGCTACTGGAGTCAGAAGTCTCGATGTCTGTACCCGGGCAACGTGGTCCGGGGGGCC
 TCCGGTGACGAAGATGAGGACCTGGACTCAGTAGTGGTGAATTTGACGATGGGGATACAGGCCACATC
 GCCGTCTCCAACGTGAGGCTGTGCCCCCTGACTTCAAGATCCAGTGCACAGAGCCCTCTCCAGCCCTG
 CTAGTGTCTAGCAGCTGCCGGAGGACCAAGAAGGTATCCAGTGAGGCACCCCGCCTAGTGAAGCCGCC
 ACCCCAGCCTGTCCCCAAAGCACAGGACGGCCCCGAAGCTTTGAAGACACCTGGGAAAAAATCCATT
 AGCAAAGACAAAGCTGGTAAAGCCGAACCTCTAACCTCAGGTGCCAAATCCCCACGGGGGCTCCGAC
 CACTTCTGGGCCGCGTGGCAGCCCTTGTGAGCTGGTCCGCGGTGGCGCAGACCAAGCGGAAGGCG
 GTGGCAGCGGCCAGCAAGGGGCCGGGGTGTGCGAGAACCTTTCCAGCTCAACGGCAGCAGCAAGAAG
 CTGCGGGCCCGCAGGGCCCTGTTCCCGTGCACAGCGTGGCCACCCATATTTGGCAACGGTTCCGC
 GCCGACTCCTTCAGCAGCCTGGCAGCTCCTACGCGCCTTCTGCGGGGGACCGGGCCGGGCTCCCC
 AGGGGAGCCCAAGCTGCTGCGGGCTAAGAAGGCCGAGAGGGTGGAGGCCGAGAAGGTTGGCGGGCG
 CGGGCGGGCGGTGAGTTCCTGGTCAAGCTGGACCACGAGGGTGTGACCTCCCCAAGAACAAGACCTGC
 AAGGCGTGTCTATGGGGACAAGGACTTCAGCCCAAGCTCGGGCGGCCCTGCCAGCCCCAGCTAT
 GTGACCCCGCCCTTGTGGGCAAGGACAAGAAGGGGCGGGCACCCATCCCCCGCTGCCATGGGGCTG
 GCGCTGCGCAAGTACGCGGGCCAGGCAGAGTTCGCGTGCCTACGACAGCGACTGCCACAGCTCCTTC
 TCGGACGAGGACGAGGACGGGCCGGGCTGGCGGCGGCGTGCCTCCCGCTTCTCGCCCGCTGTCC
 GTGTCTCTTCTCTCTGGCTCGTCCACCTCCTCCTCAGGCTCCGTGTCCACCTCCAGCCTCTGC
 TCCTCCGACAACGAGGACTCGTCTACAGCTCAGACGACGAGGACCCGGCTCTGTGCTGCAGACCTGC
 CTCACCCACCCCGTGCCACCCCTCTGGCCAGCCGAGGCCCTGCGCTCCAAGGGCAGCGGCCCTCAC
 GCGCATGCCAGCGCTGCTTCTGTCCAGGGCCACGGTGGCTGGCACCGGTGCGGGCTCAGGCCCCAGC
 AGCAGCAGCAATCCAAGCTCAAGCGCAAGAGGCCCTGAGCTTCTCAAAGCCAAGAGCTCTCCCGG
 AGGCAGCGGCCGCCCTCCGTGGAAAACCGGCCAAAGATCTCAGCCTTCTGCCCGCCCGGACGCTGTGG
 AAGTGGTGGGGAAATCCACACAGCGCGTGGCATGAAGGGGAAGGCCCGGAAGCTGTTCTACAAGGCC
 ATCGTGGGGGCGAGGAGACCCTGCGTGTGCGGGACTGTGCCGTCTTCTGTGAGCTGGGCGGCCAAC
 CTCCCCATACGCGCCATCGAGAGCATGTGGGAGTGTGGGGCAGCAACATGGTGGTCAAGGTCAAG
 TGTTCTACCACCTGAGGAGACCAAGCTGGGCAAGAGGCAGTGCACGGCAAGAATGCGCTGTACCAG
 TCCTGCCACGAGGATGAGAACGACGTGCAGACCATCTCCACAAGTGCCAGGTGCTGGCGCGGAGCAG
 TATGAGCAGATGGCCCGGAGCCGCAAGTGCCAGGACCGGCAAGGACCTCTACTACCTGGCGGGCACCTAC
 GACCCACACCGGGCGCCTGGTACGGCTGATGGCGTGCCTATCTATGC

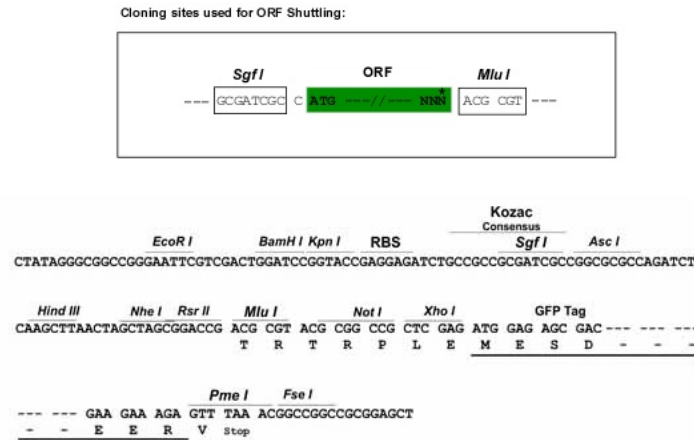
ACGCGTACGCGGCCGCTCGAG - GFP Tag - GTTTAAAC

Protein Sequence: >Peptide sequence encoded by RG240255
 Blue=ORF Red=Cloning site Green=Tag(s)

```

MDGRDFAPPPHLLSERGSLGHRSAARLAPAGPAAQPPAHFQPGKYFPPSPLMASHTASSRLMGSSP
ASSFMGSFLTSSLGSAASTHPSGSSPPEQAYRGSHTTSQIWFSHSHEAPGYPRFSGSLASTFLPVS
HLDHHGNSNVL YGQHRFYGTQKDNFYLRNLPPQPTLLPANHNFPVARAAPAHMPGSCSRDRDRGEAGS
LQKGPKDFDRFLVGKELGREKAGKAAEGKERPAEEEDGGKERHKLVLVLPVADGHCREGGPARGACEGR
PKHLTSCLLNTKVLNGEMGRAALASCAGMGLGRPGTGVVTSGRCAKEAAGPPEPGPAFSECLERRQMLH
HTASYAGPPPPLSTAAGSFPCLQLHGPDGLCPLQDKAPRDLKASGPTTFVPSVGHADKGRPFQAAEAC
AVAGEGKDRHLEGTMAPDHAAPYGVSYAHLKAEGKERRPGGFEAALNPRLKGLDYLSSAGPEASFPG
PKSGLDKSGYFELPTSSQDCARPGHQDPLGGKAPQACCTLDKTVGKEAPAGPPGAQKVARIRHQHLM
AEVEQGGIGAEAKRKSLELASLGYSGPHLPPWGVQAGQGTAMAI SEERKAGAYLDPFGSGLQQAALLPQ
ELPAPPDEVSAMKNLLKYSSQALVVGQKAPLVGLGGLKASCIQQEAKFLSSKGGQSERPDCARSREHD
TTHGDGEVRQPPVGI AVALARQKDTVSRSEAYGTNTARQGRAAPAFKGGGGPRSTHALDLEAEERTR
LCDDRLGLASRELLQLQSKDRVEFARIHPPSSCPGDLAPHLMMQSGQLGGDPAPHTHPHPWLPRTRSP
SLWMGGHSYGLGHPALHQNLPPGFPASVAGVPVSVFPLPQDAPTQLVILPSEPTPHSAPHALADVMDQA
SLWPPMYGGRGPASHMQHPGQLPVYSRPQLLRQEL YALQQQRAAQFQRKPEDQHLDEEPAQEAKPKS
THKPVALTPTAPGAPSPAAGPTKLPPCCHPPDPKPPASSPTPPRPSAPCTLNVCPASSPGPSRVS
EENKNGEQQSTADIITSEPVARAHVAHAGLEFLASNDPSTASQSFGITDLPPGYLRPMAGLGFSLPS
DVHSSNLEDPETMQTTAPGAQPEPTRTFLPGEPPPCSPRSLEEPGLL SGAREATQDLAATPYPTERGPQ
GKAADPSPLEGLQELQCAALLEAGGPEATGQAHSTOGGAREERSREEGEQGPSSGASSQVLEQRAGSPG
ALEDEGEQPAPEEDEL EDELGQQSMEDSEEDCGGAPDNSHPPRALPGLDALVAATINLGDLPDSPPD
PQPPAASGPPSTVPLPHSSGIHGIALLSELADLAIQRQRTVPEEEEDVLAFLNLQHLATLATAWSLV
EAAGLDSSTAPAQPPTANPCSGPRLTPRMQILQRKDTWTPKTKPVCPLKAAIDRLDTQEVGMRVLAEL
QRRYKEKQRELARLQRKHDHERDESSRSPARRGPRKRKHSSSLPAPRPTGPLPRSDGKVKVARTS
LGLLCAELRGGSGGEPAKKRSLKERSVYAGLQTASVEKAQCKKSSCQGLLAPVAHRVAQLKPKVSKG
LPTGLSSFQKQKEATPGGRIREKLSRAKSAKVSAGTRHPQPKGHGSRETPRCPAQPSVAASQEAGSGYDS
EDCEGLLGT EAPPREAGLLLHTGASVAVLGPSPSSVVKMEANQKAKKKKERQGLL GACRLSSPESEVKI
KRRSVKAKVGTTLERAPGQPPGALGKKKAKGKAGSLRAEPGATPSRDALFNPSRAFACREEGSQLAS
ERLKRATRKGTVLQPVLRKNGAL SITLATRNAKAILGKGRKLSKVVKHKAGKQKGRAVSRLLESFAVE
EDFEFDDNSSFEEEEEEEEEDSGPLSAEQSAALARSCAIHKEDLRDGLPVLIPKEDSLLYAGSVRT
LQPPDIYSIVIEGERGNRQRIYSLEQLLQEAVL DVRPQSSRYLPPGTRVCAYSQKSRCLYPGNVVPGA
SGDEDEDLDSVVVEFDDGDTGHIAVSNVRLPPDFKIQCTEPPALLVSSSCRRTKVSSEAPPSEAA
TPSLSPKAQDGP EALKTPGKKSISKDKAGKAELLTSGAKSPTGASDHFLGRRGSPLL SWSAVAQTKRKA
VAAASKGPGVLQNLQNLNGSSKKLRAREALFPVHSVATP IFGNGFRADSFSSSLASSYAPFVGGTGPGLP
RGAHLLRAKKAERVEAEKGGRRRAGGEFLVKLDHEGVTSPKNKTCALLMGDKDFSPKLRPLPSPSY
VHPALVGKDKKGRAPIPPLPMGLALRKYAGQAEFPLPYDSDCHSSF SDEDEDGGLAAGVPSRFLARLS
VSSSSSGSSTSSSSGSVSTSSLCSNDNDSYSSDDEDPALLLQTCLTHPVPTLLAQPEALRSKSGSPH
AHAQRCFLSRATVAGTGAGSGPSSSSSKLKRKEALSFSAKEL SRRQRPPSVENRPKISAF LPARQLW
KWSGNPTQRRGMKGKARKLFYKAIVRGEETLRVGDCAVFLSAGRPNLPYIGRIE SMWESWGSNMVVKVK
WPHYPEETKLGKRQCDGKNALYQSCHEDENDVQTI SHKCQVVAREQYEQMARSRKQDRDLYLAGTY
DPTTGRLVTADGVPILC
TRTRPLEMESDESGLPAMEIECRITGTLNGVEFELVGGGEGTPEQGRMTNKMSTKGALTFSPYLLSHV
MGYGFYHFGTYPSGYENPFLHAINNGGYNTRIEKYEDGGVLHVSFSYRYEAGRVIGDFKVMGTGFPED
SVIFTDKIIRSNATVEHLHPMGDNDLDGSFTRTFLRDGGYSSVVD SHMHFKSAIHPSILQNGGPMFA
FRRVEEDHSNTELGIVEYQHAFKTPDADAGEERV
  
```

Restriction Sites: SgfI-MluI

Cloning Scheme:


ACCN: NM_001291324

ORF Size: 7917 bp

OTI Disclaimer: The molecular sequence of this clone aligns with the gene accession number as a point of reference only. However, individual transcript sequences of the same gene can differ through naturally occurring variations (e.g. polymorphisms), each with its own valid existence. This clone is substantially in agreement with the reference, but a complete review of all prevailing variants is recommended prior to use. [More info](#)

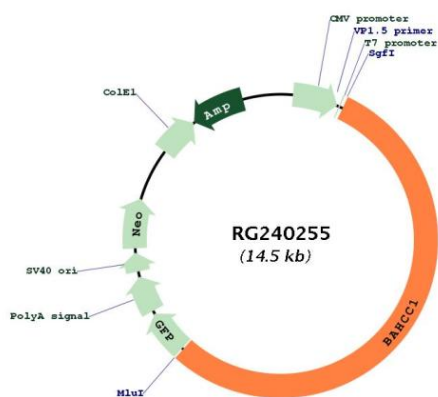
OTI Annotation: This clone was engineered to express the complete ORF with an expression tag. Expression varies depending on the nature of the gene.

Components: The ORF clone is ion-exchange column purified and shipped in a 2D barcoded Matrix tube containing 10ug of transfection-ready, dried plasmid DNA (reconstitute with 100 ul of water).

RefSeq: [NM_001291324.3](#)

RefSeq Size: 10454 bp
 RefSeq ORF: 7920 bp
 Locus ID: 57597
 UniProt ID: [Q9P281](#)
 Cytogenetics: 17q25.3
 MW: 280.5 kDa

Product images:



Circular map for RG240255