

Product datasheet for **RG240249**

MAST4 (NM_001297651) Human Tagged ORF Clone

Product data:

Product Type:	Expression Plasmids
Product Name:	MAST4 (NM_001297651) Human Tagged ORF Clone
Tag:	TurboGFP
Symbol:	MAST4
Mammalian Cell Selection:	Neomycin
Vector:	pCMV6-AC-GFP (PS100010)
E. coli Selection:	Ampicillin (100 ug/mL)
ORF Nucleotide Sequence:	>RG240249 representing NM_001297651. Blue=ORF Red=Cloning site Green=Tag(s)

```
GCTCGTTTAGTGAACCGTCAGAATTTTGTAAATACGACTCACTATAGGGCGGCCGGGAATTCGTCGACTG
GATCCGGTACCGAGGAGATCTGCCGCCGCGATCGCC
ATGGATATGTCTGACCCCAATTTTTGGACTGTGCTCTCAAACCTTACTTTGCCTCATTTGAGGAGTGGG
AACAGGCTTCGGCGAACACAAAGTTGCCGAACAAGCAACCGGAAAAGCTTAATAGGCAATGGGCAGTCA
CCAGCATTGCCTCGACCACACTCACCTCTCTGCTCATGCAGGAAATAGCCCTCAAGATAGTCCAAGA
AATTTCTCCCCAGTGCCTCAGCCATTTTTCAATTTGCACGGAGGACTGATGGACGCCGCTGGTCGTTG
GCTTCTCTCCCTCTCCTCTGGCTATGGGACAAACACACCCAGCTCTACGGTCTCTTCATCCTGTTCCTCC
CAGGAGAAGTTGCATCAGTTACCATACCAACCAACACCAGAGTTACACTTCTTATCAAACATTTTC
TGTACCACCGAAAGCATCGCCACTGAGAACAGATGCAGGAACACGCCGATGCGCCCCGTTCCCGAAGT
CTGAGCCCTGGACGTTCTCCCGCCTGCTGTGACCATGAAATAATTATGATGAACCATGTCTACAAAGAA
AGGTTCCCAAAGGCTACAGCTCAGATGGAAGAAGCTCTAAAGGAAATTATCACCAGCTACTCTCCTGAC
AACGTTCTACCCTTAGCAGATGGAGTGCTTAGTTTCACTCACCACCAGATTATTGAACTGGCTCGAGAT
TGCTTGGATAAATCCCACCAGGGCCTCATCACCTCAGTACTTCTTGAATTACAGCACAAATTAGAT
AAGTTGCTACAGGAGGCTCATGATCGTTAGAAAGTGGAGAATTGGCATTATTAACAACACTAGTTCGA
AAGATCCTAATTGTTATTGCCCGCCTGCTCGTTATTAGAGTGCCTGGAATTTGATCCGGAAGAATTT
TACTACCTATTGGAAGCAGCAGAAGGCCATGCCAAAGAAGGACAGGGTATTAACACCGACATTCCCAGG
TACATCATTAGCCAACCTGGGACTCAATAAGGATCCCTTGGAAGAAATGGCTCATTGGGAAACTACGAT
AGTGGGACAGCAGAAACACCAGAAACAGATGAATCAGTGAGTAGCTCTAATGCCTCCCTGAAACTTCGA
AGGAAACCTCGGGAAAGTGATTTTAAAACGATTAATGATTAGCAATGGAGCCTATGGGCAGTCTAC
TTTGTTCCGCATAAAGAATCCCAGCAGAGGTTTGCATGAAGAAGATTAATAACAGAACCTCATCCTT
CGAAACAGATCCAGCAGGCCTTTGTTGGAGCGGATATCCTGACTTTTGCAGAAAACCCCTTTGTTGTC
AGCATGTATTGCTCCTTTGAAACAAGGCCACTTGTGCATGGTCATGGAATATGTGGAAGGGGGAGAC
TGTGCTACTTTAATGAAAAACATGGGTCCTCTCCCTGTTGATATGGCCAGAATGTACTTTGCTGAGACG
GTCTTGGCCTTGAATATTTACATAATTATGGAATTGTACACAGGATTTGAAACCAGACAACCTGTTG
GTTACCTCATGGGCACATAAAGCTGACAGATTTTGGATTATCTAAGGTGGGACTAATGAGCATGACT
ACCAACCTTTACGAGGTCATATTGAGAAGGATGCTAGAGAGTTCCTGGATAAACAGGTCTGTGGCACA
```



[View online >](#)

CCTGAATACATTGCACCAGAAGTGATTCTGAGGCAGGGTTATGGAAAGCCGGTGGACTGGTGGGCCATG
GGGATTATCCTCTATGAATTTCTGGTTGGATGCGTGCCATTCTTTGGGGATACTCCAGAGGAGCTATTT
GGACAAGTCATCAGTGATGAGATCAACTGGCCTGAGAAGGATGAGGCACCCACCTGATGCCAGGAT
CTGATTACCTTACTCCTCAGGCAGAATCCCCTGGAGAGGCTGGGAACAGGTGGTGCATATGAAGTCAA
CAGCATCGATTCTCCGTTCTTTAGACTGGAACAGTTTGTCTGAGACAGAAGGCAGAATTTATCCCAA
CTGGAATCTGAGGATGACACAAGTTATTTTGATACTCGGTCTGAGAAGTATCATCATATGGAAACGGAG
GAAGAAGATGACACAAATGATGAAGACTTTAATGTGAAATAAGGCAGTTTCTCATGTTCACACAGG
TTTTCAAAGTTTTTCAGCAGTATAGATCGAATCACTCAGAATTCAGCAGAAGAGAAGGAAGACTCTGTG
GACAAAACCAAAAGCACACCTTCCATCCACAGAAACACTGAGCTGGAGTTCAGAAATTTCTGAAATG
CAACAGCTATCAACATCCAACCTCTCAGATACTGAAAGCAACAGACATAAACTCAGTTCTGGCCTACTT
CCCAAAGTGGCTATTTCAACAGAGGGAGAGCAAGATGAAGCTGCCTCCTGCCCTGGAGACCCCATGAG
GAGCCAGGAAAGCCAGCCCTTCTCCTGAAGAGTGTGCCAGGAGGAGCCTGAGGTCACCACCCAGCC
AGCACCATCAGCAGCTCCACCCTGTCAGTTGGCAGTTTTTCAGAGCACTGGATCAGATAAATGGACGA
AGCGAGTGTGGACAGTACAGATAATTCCTCAAAGCCATCCAGTGAACCCGCTTCTCACATGGCTCGG
CAGCGATTAGAAAGCACAGAAAAAAGAAAATCTCGGGAAAGTCAAAAGTCCCTCTCTGCCAGTCT
CTTCCCTCATGATCCCAGGAGATATGTTTGTGTTCCCTCTGGGAAGTCAAATGTCTCCCCATTCC
CTGTCCCTCGGACCCTTCTTCTCACGAGATTCTCTCCAGCCGAGATTCTCAGCAGCTTCTGCCAGT
CCACATCAGCCGATTGTGATCCACAGTTCGGGGAAGAACTACGGCTTTACCATCCGAGCCATCCGGGTG
TATGTGGGAGACAGTGACATCTATACAGTGCACCATATCGTCTGGAATGTAGAAGAAGGAAGTCCGGCA
TGCCAGGCAGGACTGAAGGCTGGAGATCTATCACTCACATCAATGGAGAACCAGTGCATGGACTTGTG
CACACAGAAGTTATAGAATCCTACTGAAGAGTGGGAATAAGGTGTCAACTACTACTACCCATTTGAA
AACACATCAATCAAACTGGACCAGCCAGGAGAAACAGCTATAAGAGCCGGATGGTGAGGCGGAGCAAG
AAATCCAAGAAGAAAGAAAGTCTCGAAAGGAGGAGATCTCTTTTCAAAGCTAGCCAAGCAGCCTTCT
CCTTTACTCCACACCAGCGAAGTTTTCTCTGCTTGAACAGATCCCTGTATCGGGTGAGAGCCTCCA
GGTCCCCCACTCATAGCTTGTCTCCCCGCTCCAACCAAGCTACCGCTCCACCCCTGACTTCCCA
TCTGTTACTAATCCTCCAGAGCAGCTCCCCTAGTTCTAGTGCCCCAATTCCCAGCAGGGTCCGGG
CACATCCGGCCAGCACTCTCCACGGTCTTGACCCAACTCGGCGGGCAGCGGTACCGTCCGGAAGG
CGAAAGTCCGCGGCAACATCCCCTGTCCCCGCTGGCCCGGACGCCCTCTCCAACCCGCAACCCACC
TCCCCGACGGTCAACATCCCCTTCTGGGACACTCACTGGGCAATCCAAGATCGCGCAAGCCTTT
CCCAGCAAGATGCACTCCCCGCCACCATCGTCAGACACATCGTGAGGCCAAGAGTGGGAGCCCCC
AGGTCCCCGCTGCTCAAGCGGTGCACTCCGAGGAGAAGCTGTGCCCTTACGGCAGTGACAAGAAG
CACCTGTCTCCGCAAGCACAGCTGGAGGTGACCCAAGAGGAGGTGCAGCGGGAGCAGTCCCAGCGG
GAGGCGCCGCTGCAGAGCCTGGATGAGAAGCTGTGCGACGTGCCGCCGCTCAGCCGCGCCGGCCAGTG
GAGCAAGGCTGCCTGAAACGCCAGTCTCCCGAAGGTGGGCCGCCAGGAGTCTGTGGACGACCTGGAC
CGCGACAAGTGAAGGCCAAGGTGGTGGTGAAGAAAGCAGACGGCTTCCCAGAGAAACAGGAATCCCAC
CAGAAATCCCATGGACCCGGGAGTGATTTGAAAACTTTGCTCTGTTAAGCTGGAAGAGAGAGAGAAG
AAAGTCTATCCGAAGGCTGTGAAAGGTCAAGTACTTTGAAAACAAAGCGTCTATGCAGGAGGCCCA
CCGCTGGGACGCTGCTGAAGGATGCTCTTCAAGCAGGCCAGCGTGCAGCGCCAGCGGGTGGATG
TCGGATGGCCGGGTGCTGCGGAGCACCGCCAGGTTGGCGGGACTTCAGACGGGCCCCGCTCCTGGC
ACCCTCCAGGATGCTCTGCCACTCCCTCGACAGGGGCATCTCTGGAAAGGGGGAAGGCACGGAGAAG
TCTCCAGGCCAAGGAGCTTCCGATGTGAAAAGTTAGACAGCAAGCTGGCCAACATCGATTACCTC
CGAAAGAAAATGTCACTTGAGGACAAAGAGGACAACCTCTGCCCTGTGCTGAAGCCCAAGATGACAGCT
GGCTCCCACGAATGCCTGCCAGGGAACCCAGTCCGACCCACGGGTGGCAGCAGGAGCCCCGCGGCT
TCTGAGAGCCGAGCTTTTGTGAGCAGCACCATGCAGCTCAGATGAGTGGCTCTCTTTTGTCCCTC
AAGGCTTAACAGGCCGGTGGACAGTGAACGGAGAAGCCTGGCTTGGTTGCTCCTGAGTCCCCTGTT
AGGAAGAGCCCCCAGGATAAGCTGGAAGGTAGGTCTGTCTCATGCCTGAAGCCGATCGAGGGCACT
CTGGACATTGCTCTCCTGTCCGACCTCAGGCCTCCAAGACAGAAGTGCCTTCCCAGAGTCTGCACAG
AGCCCCAGCCAAAGTGGTACGTGAGGGCTCTGTGCCACCAGTCTCCCAGCAGCAGTGGGAAAAG
AACGATACCACAGTGAAGAGAGCTTTCTCCTCCAGCTTAAAGATGAATAAATCCTACCTGCTGGAG
CCTTGGTTCTGCCCCAGCCGAGTCTCCAGAATTCACCAGCAGTTTCCCTGCCTGACCCAGAGTTC
AAGAGGGACAGGAAAGTCCCCATCTACTGCCAGGAGCCTGGAACAGTCAAGAAAGCAATCCCCAA
CAGAGAGAGGGCAGTCCCCTAACACCAAGACCACCACTGACCCAAAGTCTGACCTGCCTGGG

CAGAACCTCCACAGCCCTGACCTGGCCAGGCCACGCTGCCCGCTCCCACCTGAAGCTTCCCCCTCAAGG
GAGAAGCCAGGCCTGAGGGAATCGTCTGAAAGAGGCCCTCCCACAGCCAGAAGCGAGCGCTCTGCTGCG
AGGGCTGACACATGCAGAGAGCCCTCCATGGAAGTGTGCTTTCCAGAAACTGCGAAAACCAAGTGACAAC
TCCAAAAATCTCCTCTCTGTGGGAAGGACCCACCAGATTTCTATACACAGACCCAGGCCATGGAGAAA
GCATGGGCGCCGGGTGGGAAAACGAACCACAAAGATGGCCAGGTGAGGCGAGGCCCCCGCCAGAGAC
AACTCCTCTCTGCACTCAGCTGGAATTCCTGTGAGAAGGAGCTGGCAAGGTGAGGCGTGGCGTGGAA
CCCAAGCCCGAAGCGCTTCTTGCCAGGCGGTCTCTGCAGCCACCTGGAATTGAGAGTGAGAAGAGTGAA
AAGCTCTCCAGTTTCCCATCTTTGCAGAAAGATGGTGCCAAGGAACCTGAAAGGAAGGAGCAGCCTCTA
CAAAGGCATCCCAGCAGCATCCCTCCGCCCTCTGACGGCCAAAGACCTGTCCAGCCCGCTGCCAGG
CAGCATTGCAGTTCCTCAAGCCACGCTTCTGGCAGAGAGCCGGGGCCAAAGCCAGCACTGCAGAGCCC
AGCTCGAGCCCCAGGACCCTCCAAGCCTGTTGCTGCGCACAGTGAAAGCAGCAGCCACAAGCCCCGG
CCTGGCCCTGACCCGGGCCCTCCAAGACTAAGCACCCCGACCGGTCCCTCTCCTCTCAGAAACCAAGT
GTGGGGCCACAAAGGGCAAAGAGCCTGCCACTCAGTCCCTCGGTGGCTTAGCAGAGAGGGGAAGGGC
CACAGTAAGAGTGGGCCGATGTGTTTCTGCTACCCAGGCTCCAGAAACAAAGCCAGCGATGGGATT
GGCCAGGGAGAAGGTGGGCCCTCTGTCCTGCACTGACAGGCTCCTCTAGACGCCAAGCCACAA
CCCACCAGTGGTGGGCGGCCCTGGAGGTGCTGGAGAAGCCTGTGCATTTGCCAAGGCCGGGACACCCA
GGGCTAGTGAGCCAGCGGACCAGAAACTGTCCGCTGTTGGTGAAAAGCAAAACCTGTCTCCAAAGCAC
CCCAAACCATCCACTGTGAAAGATTGCCCCACCCTGTGCAAACAGACAGACAACAGACAGACAGACAAA
AGCCCCGAGTCAGCCGGCCGCCAACACCGACAGAAAGGGCGAAGGGGAAGAAATGCACTGAAGCACTTAT
GCTCCAGCAGAGGGCGACAAGCTCGAGGCCGGCCTTCTTTGTGCATAGCGAGAACCGTTGAAAGGC
GCGGAGCGGCCAGCCGCGGGGTGGGGAAGGGCTTCCCTGAGGCCAGAGGGAAAGGGCCCGTCCCAG
AAGCCACCGACGGAGGCAGACAAGCCCAATGGCATGAAACGGTCCCCCTCAGCCACTGGCAGAGTTCT
TTCCGATCCACGGCCCTCCCGAAAAGTCTCTGAGCTGCTCCTCAGCTTCCCTGAAACCAAGGGCCGGA
GTTAGAGAGCCCTCTGCAGCCAGCAGCAGCACCTTCTGCCAAGGCCCGCGGGGCATGCTGGAGCTT
CCAGCCCCAGCAACAGGACCATAGGAAGGCTCAGCCTGCCGGGAGGGCCGAACCCACATGACAAAG
AGTGACTCCCTGCCCTCCTTCCGGGTCTCCACCCTGCCTCTGGAGTCACACCACCCCGACCCAAACACC
ATGGGCGGGGCCAGCCACCGGGACAGGGCTCTCTCGGTGACTGCCACCGTAGGGGAAACCAAGGGAAAG
GACCCTGCCCCAGCCAGCCTCCCCAGCTAGGAAACAGAACGTGGGCAGAGACGTGACCAAGCCATCC
CCAGCCCCAAACACTGACCGCCCATCTCTTTCTAATGAGAAGGACTTTGTGGTACGGCAGAGGGCG
GGGAAAGAGAGTTTTCGTAGCAGCCCTCACAAAAGGCCTTG
ACGCGTACGCGGCCGCTCGAG - GFP Tag - GTTTAAAC

Protein Sequence: >Peptide sequence encoded by RG240249
 Blue=ORF Red=Cloning site Green=Tag(s)

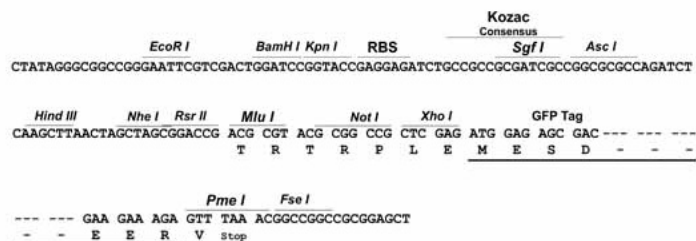
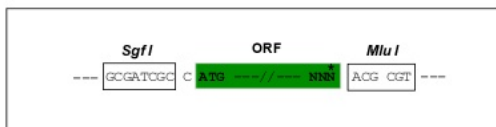
MDMSDPNFWTVLSNFTLPHLRSGNRLRRTQSCRTSNRKSILGNGQSPALPRPHSPLSAHAGNSPQDSPR
 NFSPSASAHSFARRTDGRRWLASLPSSGYGTNTPSSTVSSSCSSQEKHLHQLPYQPTDELHFLSKHF
 CTTESIATENRCRNTPMRPRSRLSPGRSPACCDHEIIMMNHVYKERFPKATAQMEERLKEIITSYSPD
 NVLPLADGVLSTHHQIIEIARDCLDKSHQGLITSRYFLELQHKLDKLLQEAHDRSESGELAFIKQLVVR
 KILIVIARPARLLECLEFDPEEFYLLLEAAEGHAKGQGIKTDIPRYIISQLGLNKDPLEEMAHLGNYD
 SGTAEPTETDESVSNSASLKLRRKPRESDFETIKLISNGAYGAVYFVRHKESRQRFAMKKINKQNLIL
 RNQIQQAFVERDILTFAENPFVSMYCSFETRRHLCMVMEYVEGGDCATLMKNMGPLPVDARMYFAET
 VLALEYLHNYGIVHRDLKPDNLLVSMGHKLTDFGLSKVGLMSMTNL YEGHIEKDAREFLDKQVCGT
 PEYIAPEVILRQGYGKPDVWAMGIIIEFLVGCVPFFGDTPEELFGQVISDEINWPEKDEAPPDAQD
 LITLLLRQNPLERLGTGGAYEVKQHRFRSLDWNLSLRQKAEFIPQLESEDDTSYFDTRSEKYHMETE
 EEDDTNDEDFNVEIRQFSSCSHRFSKVFSSIDRITQNSAEKEDSVDKTKSTTL PSTETLSWSSEYSEM
 QQLSTSNSSDTESNRHKLSGGLPKLAISTEGEQDEAASCPGDPHEEPGKPALPPEECAQEPEVTPA
 STISSSTLSVGSFSEHLDQINGRSECVDSTDNSSKPSSEPASHMARQRL ESTEKKKISGKVTKLSASA
 LSLMIPGDMFAVSPLGSPMSPHSLSSDPSSSRDSSPSRDSSAASASPHQPIVIHSSGKNYGTIRAIRV
 YVGDSDIYTVHHIVWNVEEGSPACQAGLKAGDLITHINGEPVHGLVHTEVIELLLKSGNKVSIITTPFE
 NTSIKTGPARRNSYKSRMVRRSKKSKKESLERRRSLFKKLAKQPSPLLHTSRFSCLNRSLSGSESLP
 GSPTHSLSPRSPTPSYRSTPDPFSGTNSQSSSPSSAPNSPAGSGHIRPSTLHGLAPKLGGRYRSGR
 RKSAGNIPLSPLARTPSPTPQPTSPQRSPLLGHSLGNSKIAQAFPSKMHSPPTIVRHI VRPKSAEPP
 RSPLLKRVPQSEELSPSYGSDKKHLCSRKHSLEVTQEEVQREQSQREAPLQSLDENVCVPPVLSRARPV
 EQGCLKRPVSRKVGQESVDDLDRDKLKAKVVVKKADGFPEKQESHQKSHGPGSDLENFALFKLEEREK
 KVVYKAVERSSTFENKASMQEAPPLGSLLDALHKQASVRASEGAMSDGRVPAEHRQGGGDFRRAPAG
 TLQDGLCHSLDRGISGKGEGTEKSSQAKELLRCEKLDKLANIDYLRKKMSLEDKEDNLCVPLKPKMTA
 GSHECLPGNPVRPTGGQQEPPASESRAFSVSTHAAQMSAVSFVPLKALTGRVDSGTEKPLVAPESPV
 RKSPSEYKLEGRSVSCLKPIEGTLDIALLSGPQASKTELPSPESAQSPSPSGDVRASVPPVLPSSSGKK
 NDTTSARELSPSSLKMNKSYLLEPWFLPPSRGLQNSPAVSLPDPFEFKRDRKGPHPTARSPGTVMESNPQ
 QREGSSPKHQDHTTDPKLLTCLGQNLHSPDLARPRCLPPEASPSREKPLGLESSERGPPTARSERSAA
 RADTCREPSMELCFPETAKTSDNSKNLLSVGRTHPDFYTQTQAMEKAWAPGGKTNHKDGPGEARPPPRD
 NSSLHSAGIPCEKELGKVRRGVEPKPEALLARRSLQPPGIESEKSEKLSFFPSLQKDGAKEPERKEQPL
 QRHPSSIPPPPLTAKDLSSPAARQHCSPPSHASGREPGAKPSTAEPPSSPQDPPKPVAAHSESSSHKPR
 PGPDGPPKTKHPDRSLSSQKPSVGATKKEPATQSLGGSSREGKGHSKSGPDVFPATPGSQNKASDGI
 GGQEGGSPVPLHTDRAPLDAKPQPTSGGRPLEVLEKPVHLPRPGHPGPSEPADQKLSAVGEKQTLSPKH
 PKPSTVKDCPTLCKQTDNRQTDKSPSQPAANTDRRAEGKKCTEALYAPAEQKLEAGLSFVHSENRLKG
 AERPAAGVGKGFPEARGKGGPQKPPTEADKPNGMKRSPSATGQSSFRSTALPEKSLSCSSSFPETRAG
 VREASAASDTSAKAAGGMLLELPAPSNRDHRKAQPAGEGRTHMTKSDSLPSFRVSTLPLESHHPDPNT
 MGGASHRDRALSVTATVGETKGKDPAPAQPPARKQNVGRDVTKPSAPNTDRPISLSNEKDFVVRQRR
 GKESLRSSPHKKAL

TRTRPLEMESDESGLPAMEIECRITGTLNGVEFELVGGGEGTPEQGRMTNKMSTKGALTFSPYLLSHV
MGYGFYHFGTYPSGYENPFLHAINNGGYTNTRIEKYEDGGVLHVSFSYRYEAGRVIGDFKVMGTGFPE
SVIFTDKIIIRSNAVHEHLHPMGDNDLDGSFTRTFSLRDGGYSSVVDSHMHFKSAIHPSILQNGGPMFA
FRRVEEDHSNTELGIVEYQHAFKTPDADAGEERV

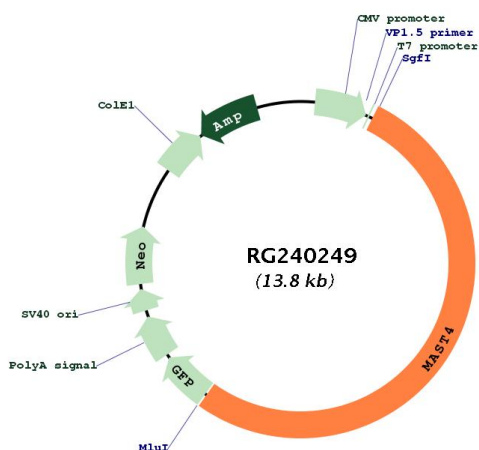
Restriction Sites: SgfI-MluI

Cloning Scheme:

Cloning sites used for ORF Shutting:



Plasmid Map:



ACCN: NM_001297651

ORF Size: 7287 bp

OTI Disclaimer:	The molecular sequence of this clone aligns with the gene accession number as a point of reference only. However, individual transcript sequences of the same gene can differ through naturally occurring variations (e.g. polymorphisms), each with its own valid existence. This clone is substantially in agreement with the reference, but a complete review of all prevailing variants is recommended prior to use. More info
OTI Annotation:	This clone was engineered to express the complete ORF with an expression tag. Expression varies depending on the nature of the gene.
Components:	The ORF clone is ion-exchange column purified and shipped in a 2D barcoded Matrix tube containing 10ug of transfection-ready, dried plasmid DNA (reconstitute with 100 ul of water).
RefSeq:	NM_001297651.2
RefSeq Size:	10219 bp
RefSeq ORF:	7290 bp
Locus ID:	375449
UniProt ID:	O15021
Cytogenetics:	5q12.3
Protein Families:	Druggable Genome, Protein Kinase
MW:	265.2 kDa
Gene Summary:	This gene encodes a member of the microtubule-associated serine/threonine protein kinases. The proteins in this family contain a domain that gives the kinase the ability to determine its own scaffold to control the effects of their kinase activities. Alternative splicing results in multiple transcript variants encoding different isoforms. [provided by RefSeq, Mar 2014]