

Product datasheet for **RG240242**

WNK2 (NM_001282394) Human Tagged ORF Clone

Product data:

Product Type:	Expression Plasmids
Product Name:	WNK2 (NM_001282394) Human Tagged ORF Clone
Tag:	TurboGFP
Symbol:	WNK2
Synonyms:	NY-CO-43; P/OKcl.13; PRKWNK2; SDCCAG43
Mammalian Cell Selection:	Neomycin
Vector:	pCMV6-AC-GFP (PS100010)
E. coli Selection:	Ampicillin (100 ug/mL)
ORF Nucleotide Sequence:	>RG240242 representing NM_001282394. Blue=ORF Red=Cloning site Green=Tag(s)

```
GCTCGTTTGTGAAACCGTCAGAATTTTGTAAACGACTCACTATAGGGCGGCCGGGAATTCGTCGACTG
GATCCGGTACCGAGGAGATCTGCCGCCGCGATCGCC
ATGGACGGCGATGGCGGCCGCCGAGACGTCCCGGCACGCTGATGGAGCCCGGGCGCGCCGGGGCCC
GCGGGCATGGCGGAGCCTCGGGCGAAGGCGCGCGCCGGGGCCCCAGCGCTTTCTGCGGCGCAGCGTG
GTAGAGTCGGACAGGAGGAGCCCGGGCTTGGAGGCAGCCGAGGCGCCGGGCCCGAGCCCCCGCAG
CCCCTGCAGCGCCGGGTGCTTCTGCTCTGCAAGACGCGCCGCTCATCGCGGAGCGCGCCCGGGACGC
CCCGCCGCCCCCGCCGCGCAGCGCTGGTAGCGCAGCCGGGAGCCCCGGAGCCCCCGGACGCCGGC
CCCGAGCCGTGGGCACGAGGAGCCCGCCCGACCCCATCGCAGCCGCTGTGAAACCGCCCTGCC
CCCGACGCGGCCCCAGGAGGAGGCGCGCGCAGCCGTGAGGAAGGAGGATGAGGGGGCGGCCGAGGCG
AAGCCTGAGCCCGGGCGCACTCGCCGGGACGAGCCGAAGAGGAGGAGGACGACGAGGACGACCTCAAG
GCCGTGGCCACCTCTCTGGACGGCCGCTTCTCAAGTTCGACATCGAGCTGGGCCGCGGTTCTTCAAG
ACGGTCTACAAGGGGCTGGACACGGAGACCTGGGTGGAGGTGGCCTGGTGTGAGCTGCAGGACCGGAAG
CTACCAAGCTGGAGCGGCAGCGGTTCAAGGAAGAGGCTGAGATGCTGAAAGGCTGCAGACCCCAAC
ATCGTGCCTTCTACGACTTCTGGGAGTCCAGCGCCAAGGGCAAGCGGTGATTGTGCTGGTGACGGAG
CTGATGACCTCAGGACGCTGAAGACATACCTGAAGCGGTTCAAGGTGATGAAGCCCAAGGTTCTCCGC
AGCTGGTGCCGCGAGATCCTGAAGGGCCTGCTGTTCTGCACACAAGGACGCCACCCATCATCCACCGA
GACCTGAAATGTGACAATATTTTCATCACCGGACCAACTGGGTCTGTGAAGATTGGCGACTTGGGCCTG
GCCACTCTGAAAAGAGCGTCATTTGCCAAAAGTGTGATAGGTAAGTACTCCCGAGTTTATGGCGCCGAGATG
TACGAGGAGCACTACGATGAGTCCGTGGACGTCTATGCCTTTGGGATGTGCATGTGGAGATGGCCACC
TCGGAGTACCCCTACTCGGAGTGCCAGAATGCGGCCAGATCTACCGCAAGGTCACCTGTGGTATCAAG
CCGGCCAGCTTTGAGAAAGTGCACGATCCTGAAATCAAGGAGATTATTGGGGAGTGTATCTGCAAAAAC
AAGGAGAAAGGTACGAGATCAAAGACCTGCTGAGCCACGCTTCTTCGAGAGGACACAGGCGTGAGG
GTGGAGCTCGCGGAGGAGGACCACGGCAGGAAGTCCACCATCGCCCTGAGGCTCTGGGTGGAAGACCCC
AAGAACTGAAGGAAAGCCCAAGGACAATGGAGCCATAGAGTTCACCTTCGACCTGGAGAAGGAGACG
```



[View online >](#)

CCGGATGAGGTGGCCCAAGAGATGATTGAGTCTGGATTCTTCCACGAGAGTGACGTCAAGATCGTGGCC
 AAGTCCATCCGTGACCGCGTGGCCTTGATCCAGTGGCGGGGAGAGGATCTGGCCCGCGTGCAGCCC
 AAGGAGCAGCAGGATGTGGGCAGCCCGGACAAGGCCAGGGGTCCGCCGTGCCCTGCAGGTCCAGGTG
 ACCTACCATGCACAGGCTGGGCAGCCCGGGCCACCAGAGCCCGAGGAGCCGGAGGCCGACCAGCACCTC
 CTGCCACCTACGTTGCCGACCAGCGCCACCTCCCTGGCCTCGGACAGCACCTTCGACAGCGGCCAGGGC
 TCTACCGTGTACTCAGACTCGCAGAGCAGCCAGCAGAGCGTGATGCTTGGCTCCCTGCCGACGAGCCG
 CCGTCCCAGGCCAGTGTGTGCAGCCCCCTGTGAGCGAGGGGGCCCGTCCCTGCCGACAGCCCTGCC
 TCGCTGGGGCCCTACCAGCAGCCACGGCTGCACCTGGCTTGGCGGTGGGCTCTGTCCCGCCCCCGCC
 TGCCCTCCGTCCCTCCAGCAGCACTTCCCGGATCCGGCCATGAGCTTCGCCCCCGTGTGCCCGCCGC
 AGCACCCCATGCCACGGGCCAGGCCAGCCAGCACCCCGGCCAGCAGCCTCCTCCGTGGCCAG
 CCGACACCCCTGCCGAGGTCTGGCCACAGCCCGTGGTCCCCTCCAGCCGTTCCCCCACCTG
 CCACCGTACCTGGCTCCAGCCTCCAGGTGGGGCCCCCGCTCAGCTGAAGCCCCCAGATGCCACAG
 GCGCCCTGCAGCCGCTTGTCAAGTCCCTCCGACAGTCCCCCGATTCTGTTGTGCCCCCATCAG
 CCCCTGGCGGAATCGACGGCTCCCTCCGGCCCTCCAGACCTGCCGACCGGACTGTGCTCCCGTG
 CCACCACCTCAGTATTTCTCCAGCCGTGATCTTCCGAGCCTCGCTGCCCACTCCCCCTGCGTCC
 CAGCCTTGCTCTGCAGGCTGTGAAGCTGCCCAACCCCTGGGGCGCCCTGGCCATGCCCTGCCGG
 ACCATTGTGCAAATGCACCGGCCACTATCCCCCTGTGGCCGTAGCCCCACCGGCGTGGCTGCCCTG
 TCCATTATTCTGCCGTGGCCAGCTCCAGGCCAACCTGTGTACCCAGCGGCCTTCCCACAGATGGCG
 CCTACTGACGTCCCTCCTCCCCCATCACACGGTGCAGAATATGAGGGCACCCCTCCACAGCCGGCA
 CTGCCCTCACAACCCACACTGCCCCACAACCCGTGTGCCCCCGCAACCCACGCTGCCCCCTCAACT
 GTGTTGCCCCGCAACCCACAGGCCCCCTCAACTGTGTGCCCCGCAACCCATGTGCCCCACAA
 CCTGTGCTGCCCCGACCGGCACTGCCTGTGCGCCCTGAGCCCTCCAGCCCACTTCTGAACAA
 GCTGCTCCAGTCTACACCAGGAGCCAGATTCTGCTTGGCCACCCAGTCCCTATGCTGTGACGCTC
 GCGCTCAGGTCCCACCGTGCCTGTGCCACCGCTGCGGTCTCTCGCCGCTCTGCCGGAAGTGTG
 CTGCTGCCGCCCTGAGCTCCTGCCTCAGTTCGCCAGCTCCCTGGCCACGGTGTCTGCCTGTGACAG
 AGTGTGCCACCCAGACTGCCACACTTCTGCCACCAGCAAACCCACCGTGCCTGGCGGGCCCGGGATC
 GCCAGCCCTTGCCCAACTGTCCAGCTGACGGTGAACAGTCCAAGAGGAGCAGGCCTCACAGGACAAG
 CCGCCCGCCTCCCGCAGAGCTGTGAGAGCTATGGAGTTCTGATGTCACTTCTGGAAAAGAGCTGAGT
 GACAGCTGTGAAGGCGCCTTTGGAGGGGCGAGGCTGGAGGGCAGGGCAGCCGAAAACACCACCGCAGG
 TCCACGCTGCGCGCTCCCGCAGGAGAGGGCCAGCCGGCCCGGCTTACCATCTTGAACGTGTGAAC
 ACTGGGACAAGATGGTGGAGTGCCAGCTGGAGACGCACAACCACAAGATGGTGACCTTCAAGTTCGAC
 TTGGACGGGACGCACCCGATGAAATTGCCACGTATATGGTGGAGCATGACTTTATCCTGCAGGCCGAG
 CGGAAAACGTTTATCGAGCAGATGAAGGATGTCATGGACAAGGCAGAGGACATGCTCAGCGAGGACACA
 GACGCCGACCGTGGCTCCGACCCAGGGACCAGCCCGCCACACCTCAGCACCTGCGGCCTGGGCACCGGG
 GAGGAGAGCCGACAATCCCAAGCCAACGCCCCCGTGTATCAGCAGAACGTCTGCACACCGGGAAGAGG
 TGGTTATCATCTGTCCGGTGGCTGAGCACCCCGCCCGAGGCCCTGAATCTTCGCCCCCACTTCT
 CTAAGCTCCCTGCCGCAAGCAAGCCAGCAAGGTCCATGCAGGGGGCTCACCTGCCCTGTCTCCATGG
 CGCAGAGCAGCTGTGGGGCTGTGTTCTATCCTTGTGTTTCTGCTGAATCAGCTCAGTCAAAGCAGCCT
 CCAGATTCAGCGCCCTATAAAGACCAGCTGTCTCGAAGGAACAACCCAGCTTTCTAGCCAGTCAAGCAG
 CTCTGAGCCAGCGGGCCAGCAACCCCTCTGGGGCACCCCAAGCCCTTTGGCCCCCTCCTCCCT
 CCTGTGACTGCTTGCCCAAGATGGAGCAGCTCCAGCCACCAGCACCATGCCAGAGCCAGCGTCAAGGA
 ACTGCCAGCCAGGAGGGGTCCAGGGACACTCAGGGGCTGACCAGTGAAGTGCAGAGCTCTCAGCCA
 CTAGCGGAGACTCACGAGGCCCGCTTGTGTGCAGCCCTCGTGGTGGGCTAGCACCTTGCACCTCCA
 GCTCCAGAGGCTGCCTCAACCAGGGACGCCAGTCCCCAAGGGAGCCCTGCCACCTCCTGCACCTGAG
 CCCAGCCCCACAGCGGGACCCACAGCCCGCTTGGGTCAACCTGCTCCCTGCTTCTGCCGAGTG
 GGGCCGTGAGCTGGCCACCTCCAGCTCCCAAGCCACCCCTGGGGCCACCGTCCCCCACAGCCA
 CCCTCGGCCCTGGAGTCCGATGGGAAGGGCCGCCCCCAAGGTGGGCTTGTGGACAGCACCATCAAG
 AGCCTGGACGAGAAGCTGCGGACTCTGCTTACCAGGAGCACGTGCCACCTCCTCAGCCTCAGCTGGG
 ACCCTGTGGAGGTGGGCGACAGAGACTTACCCTGGAGCCCCTGAGAGGGGACAGCCCGCTCAGAG
 GTCTGCGGGGGGACCTGGCCCTGCCCCAGTGCCTAAGGAGGCGGTCTCAGGGCGTGTCCAGCTGCC
 CAGCCCTTGGTGGAGAAGTCAGAAGTGGCCCCACTCGAGGGGCCGTGATGGAGCAGGGCAGTCCCTCG
 TCAATGACAGCAGAGTCTCCTCCAGGAGTATGCTAGGCTATGACAGAGATGGAAGGCAGGTGGCCCTCA

GACTCCCATGTGGTCCCCAGCGTCCCCAGGATGTACCTGCTTTTGTGAGACCTGCACGTGTGGAGCCC
ACAGACAGGGATGGTGGAGAAGCTGGAGAAAGCTCGGCAGAGCCCCCGCCGAGTGACATGGGCACAGTG
GGGGGCCAGGCTAGCCACCCCCAGACACTCGGCCTCGAGCTTTGGGGTCCCCTCGGAAACGTCCAGAG
CAGCAGGATGTACGCTACCAGCCAAGACTGTGGGCCGTTTCTCGGTGGTCAGCACTCAGGACGAGTGG
ACCCTGGCCTCCCCACAGCCTGAGATACTCTGCCCCACCCGACGTCTACCTGGACGAGGCCCTCC
AGCCCCGACGTGAAGCTGGCAGTGGCGGGCGCAGACGGCTCCTCCATCGAGGTGGCGTGGGCGAG
CCCCTGAGTGGCAGCGTGGCTGGCGACTTCGTGAAGAAGGCCACCGCTTCTGACAGAGGCTTCTCGG
GCCGGCTCGTGGCCCCGAGACACCCAGCAGGGTGGGCATGAAGTCCCCACGATCAGCGTGACCTCC
TTCCATTCAGTCGTCCTACATCAGCAGCGACAATGATTCGGAGCTCGAGGATGCTGACATAAAGAAG
GAGCTGCAGAGTCTGCGGGAGAAGCACCTGAAGGAGATCTCGGAGCTGCAGAGCCAGCAGAAGCAGGAG
ATCGAAGCTCTGTACCGCCGCTGGGCAAGCCACTGCCCCAACGTGGGCTTCTCCACACGGCACCC
CCCCTGGCCGCGGAGAAAAACCAGCAAGAGCAAGCTGAAGGCAGGCAAGCTGCTAAATCCCCTGGTG
CGGCAGCTCAAGGTCGTGGCCTCCAGCACAGGTCACCTGGCTGACTCCAGCAGAGGCCCTCCCGTAAG
GACCCTGCCCAAGCCAGTGTGGGCTCACTGCAGACAGCACGGCCTGAGCGGGAAGGCAGTGCAGACC
CAGCAGCCCTGCTCCGTCGCGGCCCTCCCTGTCTTCGGACATCTGCTCCGCTTAGCCAGTGATGGAGGC
GGAGCGCTGGCCAAGGCTGGACGGTTTACCACCCAACGTCTGAGAGAGTGACCTATAAGTCTAGTAGC
AAACCTCGTGCTCGATTCTCAGTGGACCCGATCTGTGTCCATCTGGTCTGCCCTGAAGCGTCTCTGC
CTAGGCAAGAACACAGCAGTAGGTCCTCCACCAGCAGCTGGCCCCAGGCCCTGAGCCAGGCCCCAG
CCCGCCTGCACGTCCAGGCGCAGGTGAACAACAGCAACAACAAGAAGGGTACCTTCACGGACGACCTG
CACAAGCTGGTGGACGAGTGGACGAGCAAGACGGTGGGGCCGCGCAGCTGAAGCCCACGCTCAACCAG
CTGAAGCAGACCCAGAAGCTGCAAGACATGGAGGCCAGGCAGGCTGGGCTGCCCTGGCAGGCGCGG
GCTATGACCGCACCTCGAGCAGGAGTGGGGATGCCACGTCTGCCCCAGCGCCCGGCCCTGTGCCACC
ACGGTCATTCGCGAGCCGCCCGACCCTGTCCGTGCCACACCAGATGGCGCCCTCGGAACCGCCCGG
AGAAACCAGGTGTGGTTTGGCCTCCGAGTCCCCCCACCCTGCTGTGGGCACAGCACTCAGCCGCGA
GGGGGACAGCGGGTGGGAGCAAGACTGCTTCTTTGCGGCTTACAGACCCTGTTGCTCC
AGCGGACCGACGCGTACGCGGCCGCTCGAG - GFP Tag - GTTTAAAC

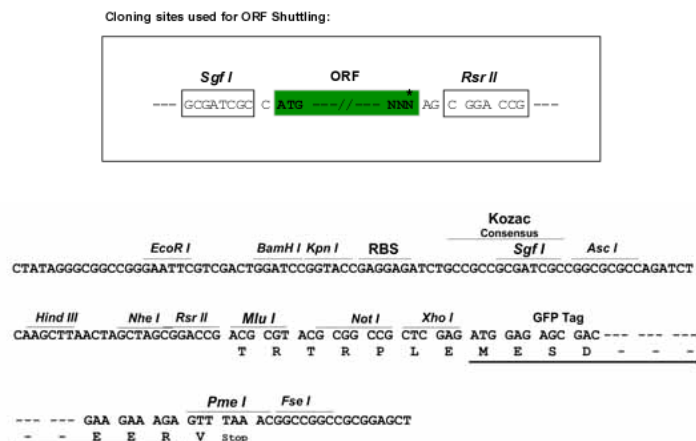
Protein Sequence:

>Peptide sequence encoded by RG240242
 Blue=ORF Red=Cloning site Green=Tag(s)

MDGDGRRDVPGLMEPGRGAGPAGMAEPRAKAARPGPQRFLRRSVVESDQEPPGLEAAEAPGPQPQ
 PLQRRVLLCKTRRLIAERARGRPAAPAPAALVAQPGAPGAPADAGPEPVTGQEPGPDPIAAAVETAPA
 PDGGPREEAAAATVRKEDEGAAEAKPEPGRTRRDEPEEEDEDDLKAVATSLDGRFLKFDIELGRGSFK
 TVYKGLDTETWVEVAWCELQDRKLTCLERQRFKEEAEMKGLQHPNIVRFYDFWESSAKGKRCIVLVE
 LMTSGTLKTYLKRKFKVMKPKVLRSWCRQILKGLLFLHTRTPPIIHRDLKCDNIFITGPTGSVKIGDLGL
 ATLKRASFAKSVIGTPEFMAPEMYEEHYDESVDVYAFGMCMLEMATSEYPYSECNAAQIYRKVTCGIK
 PASFEKVHDPEIKEIIGECICKNKEERYEIKDLLSHAFFAEDTGVRVELAEEDHGRKSTIALRLWVEDP
 KKLKGGPKDNGAIEFTFDLEKETPDEVAQEMIESGFFHESDVKIVAKSIRDRVALIQWRRERIWPAQ
 KEQQDVGSPDKARGPPVPLQVQVYHAQAGQPGPEPEEPEADQHLLPPTLPTSATSLASDSTFDSGQG
 STVYSDSQSSQSVMLGSLADAAPSPAQCVCSPVSEGPVLPQSLPSLGAYQOPTAAPGLPVGSVPAPA
 CPPSLQHFDPAMSFAPVLPSPSTPMPTGPGQPAPPGQPPPLAQPTPLPQVLAQPVVPLQVPPHL
 PPYLAPASQVGAPAQLKPLQMPQAPLQPLAQVPPQMPPIPVVPPITPLAGIDGLPPALPDLPTATVPPV
 PPPQYFSPAVILPSLAAPLPPASPALPLQAVKLPHPPGAPLAMP CRTIVPNAPATIPLLAVAPPGAAL
 SIHSAVAQLPGQPVYPAAFPQMAPTDVPPSPHHTVQNM RATPPQPALPPQPTLPPQVLPQPTLPPQP
 VLPPQPTRPPQVLPQPM LPPQVLPQPALPVRPELQPHLPEQAAPATPGSQILLGHPAPYAVDV
 AAQVPTVPVPAAVLSPPLPEVLLPAPELLPQFPSSLATVSASVQSVPTQTATLLPPANPLPGGPGI
 ASPCPTVQLTVEPVQEEQASQDKPPGLPQSCESYGGSDVTSKGELSDSCEGAFGGGRLEGRAARKHHR
 STRARSQERASRPLTILNVCNTGDKMVECQLETHNHKMTFKFDLDGDAPDEIATYMEHDFILQAE
 RETFIEQMKDVMDKAEDMLSEDTADRGSDPGTSPPHLSTCGLGTGEESRQSQANAPVYQQVNLHTGKR
 WFIICPVAEHPAPEAPESPPLPLSSLPEASQGPCRGLTLPCLPWRRAACGAVFLSLFSAESAQSKQP
 PDSAPYKDLSSKEQPSFLASQQLLSQAGPSNPPGAPPAPLAPSSPPVTALPQDGAAPATSTMPEPASP
 TASQAGGPGTPQGLTSELETSQLAETHEAPLAVQPLVVG LAPCTPAPEAASTRDASAPREPLPPPAP
 PSPHSGTPQPALGQPAPLLPAAVGAVSLATSQLSPPLGPTVPPQPPSALESDGEGPPRVGFVDSTIK
 SLDEKRLTLLYQEHVPTSSASAGTPVEVGDRDFTLEPLRGDQPRSEVCGGDLALPPVPKEAVSGRVQLP
 QPLVEKSELAPTRGAVMEQGTSSSMTAESSPRSM LGYDRDGRQVASDSHVVPVSPQDVPAFVRPARVEP
 TDRDGGEGEAGSSAEPSPDMGTGGQASHPQTLGARALGSPRKRPEQQDVSSPAKTVGRFSVVSTQDEW
 TLASPHSLRYSAPPDVYLDEAPSSPDVLAARRAQTASSIEVGVGEPVSSD SGDEGPRARPPVQKQASL
 PVSGSVAGDFVKKATAFLQRPSRAGSLGPETPSRVGMKVPTISVTSFHSQSSYISSDNDSELEDADIKK
 ELQSLREKHLKEISELQSQKQIEALYRRLGKPLPPNVGFHTAPPTGRRRKT SKSKLKAGKLLNPLV
 RQLKVVASSTGHLADSSRGPPAKDPAQASVGLTADSTGLSGKAVQTQPCSVRASLSSDICSLASDGG
 GARGQGWTVYHPTSERVYKSSSKPRARFLSGPVSVSIWSALKRCLGKEHSSRSSTSSLAPGPEPGQ
 PALHVQAQVNNNNKGTFTDDLHKLVDWETSKTVGAAQLKPTLNQLKQTKLQDMEAQAGWAAPGEAR
 AMTAPRAGVGM PRLPPAPGPLSTTVIPGAAPTL SVPTPDGALGTARRNQVWVGLRVPTACCGHSTQPR
 GGQRVGSKTASFAASDPVRS
 SGPTRTRPLEMESDESGLPAMEIECRITGTLNGVEFELVGGGEGTPEQGRMTNKMKSTKGALTFSPYLL
 SHVMGYGFYHFGTYPSGYENPFLHAINNGGYTNTRIEKYEDGGVLHVSFSYRYEAGRVIGDFKVMGTGF
 PEDSVIFTDKIIRSNATVEHLHPMGDNDLDGSFTRTFSLRDGGYSSVVD SHMHFKSAIHP SILQNGGP
 MFAFRRVEEDHSNTELGIVEYQHAFKTPDADAGEERV

Restriction Sites:

Sgfl-RsrII

Cloning Scheme:


ACCN: NM_001282394

ORF Size: 6891 bp

OTI Disclaimer: Due to the inherent nature of this plasmid, standard methods to replicate additional amounts of DNA in E. coli are highly likely to result in mutations and/or rearrangements. Therefore, OriGene does not guarantee the capability to replicate this plasmid DNA. Additional amounts of DNA can be purchased from OriGene with batch-specific, full-sequence verification at a reduced cost. Please contact our customer care team at custsupport@origene.com or by calling 301.340.3188 option 3 for pricing and delivery.

The molecular sequence of this clone aligns with the gene accession number as a point of reference only. However, individual transcript sequences of the same gene can differ through naturally occurring variations (e.g. polymorphisms), each with its own valid existence. This clone is substantially in agreement with the reference, but a complete review of all prevailing variants is recommended prior to use. [More info](#)

OTI Annotation: This clone was engineered to express the complete ORF with an expression tag. Expression varies depending on the nature of the gene.

Components: The ORF clone is ion-exchange column purified and shipped in a 2D barcoded Matrix tube containing 10ug of transfection-ready, dried plasmid DNA (reconstitute with 100 ul of water).

RefSeq: [NM_001282394.1](#), [NP_001269323.1](#)

RefSeq Size: 8240 bp

RefSeq ORF: 6894 bp

Locus ID: 65268

UniProt ID: [Q9Y3S1](#)

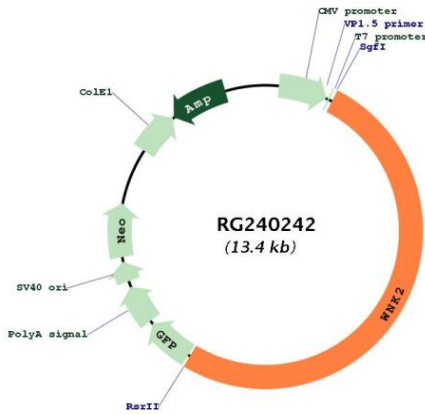
Cytogenetics: 9q22.31

Protein Families: Druggable Genome, Protein Kinase

MW: 243.1 kDa

Gene Summary: The protein encoded by this gene is a cytoplasmic serine-threonine kinase that belongs to the protein kinase superfamily. The protein plays an important role in the regulation of electrolyte homeostasis, cell signaling survival, and proliferation. Alternative splicing results in multiple transcript variants. [provided by RefSeq, Sep 2013]

Product images:



Circular map for RG240242