

## Product datasheet for **RG240232**

### GTF3C1 (NM\_001286242) Human Tagged ORF Clone

#### Product data:

Product Type:	Expression Plasmids
Product Name:	GTF3C1 (NM_001286242) Human Tagged ORF Clone
Tag:	TurboGFP
Symbol:	GTF3C1
Synonyms:	TFIIIC; TFIIIC220; TFIIICalpha
Mammalian Cell Selection:	Neomycin
Vector:	pCMV6-AC-GFP (PS100010)
E. coli Selection:	Ampicillin (100 ug/mL)
ORF Nucleotide Sequence:	>RG240232 representing NM_001286242. Blue=ORF Red=Cloning site Green=Tag(s)

```
GCTCGTTT TAGTGAACCGTCAGAATTTTGTAAACGACTCACTATAGGGCGGCCGGGAATTCGTGACTG
GATCCGGTACCGAGGAGATCTGCCGCCGCGATCGCC
ATGGACGCGCTGGAGTCGTTGTTGGACGAAGTCGCTCTGGAGGGGCTCGATGGCCTGTGTCTGCCAGCG
CTGTGGAGCCGGCTGGAGACGCGAGTGCCGCCCTTCCCGCTGCCTTTGGAACCTGCACGCAGGAGTTT
CTCTGGCGGGCCCTCGCCACGCACCCGGGCATCAGCTTCTATGAGGAGCCTCGGGAGCGACCCGACCTA
CAGCTCCAGGACCGGTATGAAGAAATTGATTTGGAACTGGAATTTTGGAGTCTAGGAGGGACCCGGTG
GCTTTGGAGGATGTCTACCCATTCATATGATCTTAGAGAATAAGGATGGCATCCAGGGCTCATGCCGC
TACTTTAAGGAGAGGAAAAACATTACCAATGACATCAGAACCAAGTCCTTGCAGCCTCGTGTACAATG
GTGAAGCCTTTGACAGGTGGGGGAAGAACTGATCATCGTTGCCCTCCAGGCCATGCGGTACAGGGCC
TTGATAGGCCAGGAGGGGATCCCGACCTGAAGCTGCCCGACTTCTCCTACTGCATCCTGGAACGGCTA
GGCCGGTCCAGGTGGCAAGGGGAGCTCCAGCGAGACCTTACACCACTGCTTTCAAGGTTGATGCTGGG
AAGCTGCACTATCACAGAAAAATTTTGAACAAAAACGGGCTGATTACAATGCAGTCCCATGTGATCCGA
TTACCCACTGGAGCCCAGCAACTCAATCCTCCTCCTACTGAACCGGTTTCATGTGGACAGGAGGAGC
AAATACGACATCCTCATGGAGAAGCTTTCGGTCATGCTGAGCACACGGACTAACCACATAGAGACGCTG
GGAAAGCTGAGGGAAGAGCTGGGGCTGTGCGAAAGGACGTTTAAGCGTCTGTACCAATATGCTGAAC
GCCGGCTAGCCAAGGTGGTGTCTTTCGCTTGAAGAGATCCACCCTGAATGTGGACCTTGTAAAGACA
AAGAAAGGGACCGACGTCATGGTTTCGGTGCCTCAAGCTGCTGAAGGAATTTAAACGGAATGACCATGAT
GATGACGAGGACGAGGAGTTCATCTCCAAGACAGTGCCTCCAGTGGACATTGTGTTCCAGCGGGATATG
CTCACACAGACCTACGACCTCATTGAGCGCAGAGGCACGAAAGGAATTTCCCAAGCTGAAATCCGAGTG
GCTATGAATGTGGGAAAAGTGAAGCAAGAATGCTGTGCCGACTTCTTCAAAGATTCAAAGTTGTCAAG
GGATTCATGGAAGACGAAGTTCGGCAGCGAACCAAGTACATTTCTGCGTGTTCAGAGGAGAGC
GACCTAAGCCGGCAGTACCAAAGAGAGAAGGCCCGCAGCGAGCTTGTACCACCGTGAAGCTGGCGTCT
ATGCAGGAGGAGTCGCTTCTGCCTGAAGGCGAGGACACCTTCTCTCTGAGTCGGACAGTGAAGGAGG
AGGAGCAGCAGCAAGCGGAGAGGAGGTTCCAGAAAGACACAAGAGCCTCTGCAACCTCCGGCC
```



[View online >](#)

AAGACCCAGCCTCATCACTCCACCCCAACCAAGGGTGGGTGAAAAGTTGTAACCTACACCCATTGAAA  
 AAGCAGCCGCCCTCCTTCCCAGGAGCTGCTGAAGAGAGAGCCTGCCAGAGCCTTGCCAGCAGGGACAGC  
 CTCTTAGATACCAGCAGCGTCTCAGAACCAACGTGTCTTTGTCTCCCACTGTGCGGACAGCAACAGT  
 GGTGACATAGCTGTGATCGAGGAGGTCCGGATGGAAAACCCAAAGGAGAGTAGCAGTTCCCTGAAGACT  
 GGGAGGCACAGCTCAGGCCAAGACAAACACACGAAACTTACCGACTGCTGAAACGCAGGAATCTGATC  
 ATAGAAGCTGTCACCAATCTTCGCTTAATCGAGAGTTTATTCAGATTGAGAAGATGATCATGGATCAG  
 GAGAAGCAGGAAGCGTGTCCACCAAGTCTGCAAGAAGTCCATTGTCGCTTGGTCCGGAACCTGTCT  
 GAGGAAGGTCTCTTGCGATTGTATCGGACCACTGTCAATCAAGATGGCATCAAGAAGAAGGTGGATCTG  
 GTGGTGCACCCGTCCATGGACCAGAACGACCCTCTAGTGAGAAGTGCCATCGAGCAGGTCCGCTCCGG  
 ATCTCCAATTCAAGCACAGCCAACAGGGTTAAACTTCCCAGCCTCCAGTGCCCCAAGGGGAGGCAGAA  
 GAAGACAGTCAAGGAAAAGAGGGCCCAAGTGGATCAGGGGACTCTCAGCTGAGTGCTTCTCTAGATCA  
 GAAAGTGGACGGATGAAAAAAGTGATAATAAAATGGGCATAACCCCGCTTAGAAATTATCACCCCAT  
 GTAGTTCCCGGACTGGGGCTTCTCTAGGATTTCTGCCAAAATGCCTCGCTGCGGGTGGTCCACATG  
 TTTCTGTGGTACCTCATCTACGGGCACCCTGCCAGCAACACCGTGGAGAAGCCAAGCTTCATCAGTGAA  
 CGGAGAACGATAAAGCAGGAGTCAGGCAGGGCAGGCGTCCGGCCCTCCTCTGGAAGTGCCTGGGAG  
 GCCTGCTCTGAAGCCCATCTAAAGGCAGCCAAGATGGTGTACCTGGGAGGCTGAAGTGGAGCTTGCC  
 ACGGAGACAGTGTATGTCGACGATGCCTCGTGGATGCGCTACATCCCCCAATCCCAGTCCACAGGGAC  
 TTCGGCTTTGGCTGGGCTCTCGTCAGCGACATCCTCCTCTGCCTTCCCCTCTCCATCTTATCCAGATT  
 GTGCAAGTCAGCTACAAGGTGGACAACCTGGAGGAATTTCTGAACGACCCCGCTGAAGAAGCACACGCTG  
 ATCCGCTTTCTCCCCAGGCCATTCGGCAGCAGCTTCTGTACAAGAGGCGTTACATTTTTTCGGTGGTG  
 GAGAACCTTCAGAGGCTGTGCTACATGGGGCTGCTACAGTTTGGTCCCACGAAAAGTTTCAGGATAAA  
 GATCAGGTCTTTATCTTCTTGAAGAAGAATGCAGTCATTGTTGACACTACCATCTGCGACCCACATTAC  
 AACCTGGCCCGCAGCAGCCGGCCCTTCGAGAGGCGCCTCTATGTCCTGAACTCAATGCAGGATGGGAA  
 AACTACTGGTTTACCTGCAGTGGTCTGCCTCAACACCCCACTAGGCGTGGTGCCTGCCGCGGCTC  
 AGGAAGAACAGCAGCACAGACCAGGGCAGCAGCAGGAGGGCAGCCTGCAGAAGGAGCAGGAGAGCGCC  
 ATGGACAAGCACAACTGGAGCGCAAGTGCCTCATGCTGGAGTACACCACTGGAAGCCGTGAGGTGGTG  
 GATGAAGGCTTGATCCCTGGAGATGGGCTGGTGGCGCAGGGCTCGATTCCAGCTTCTACGGACACCTC  
 AAGCGCAACTGGATCTGGACCAGCTACATCATCAACCAGGCCAAAAGGAGAACACTGCCGCAGAGAAT  
 GGACTCACAGTGAGGCTCCAGACATTTCTGTCCAAGCGCCCAATGCCCTCAGTGCCAGAGGCAACAGC  
 AGGTTGAATATTTGGGGGAAGCAAGAGTAGGCTCCGAGCTCTGTGCTGGCTGGGAAAGAGCAGTTTGAG  
 GTGGACCGAGAGCCCTCGCTGGACCGAAACCGGAGAGTAGGGGTGGGAAAAGCCAGAAGCGGAAGCGG  
 CTGAAGAAGGACCTGGGAAGAAGATCAAGAGAAAAGAAGAAAGGAGAGTTCCAGGAGAAAAAGCAAA  
 AGGCTGCGCTACCATGATGAAGCCGACCAGAGTGCCTGACGCGGATGACGCGGCTTCGTGTCACTGG  
 TCTATGCAGGAGGATGGGCTGCTTGTGCTGTGCCGATTGCCAGCAATGTCTCAACACCAAGGTGAAG  
 GGCCCATTTGTCACTGGCAGGTGGTACGGGACATTTTGCATGCCACGTTTGAAGAGTCTTTGGATAAA  
 ACATCTCATTCCGTTGGACGAAGAGCTCGCTACATAGTCAAAAACCCACAGGCCTATCTCAACTATAAA  
 GTGTGCCTGGCCGAGGTGTACCAGGATAAAGCACTTGTGGAGATTTTATGAATCGAAGAGGTGACTAT  
 GATGACCCAAAGGTTTGTGCCAACGAGTTTAAAGAATTTGTGGAGAAGCTTAAAGAAAAGTTCAGTTCA  
 GCCCTAAGGAATTCTAACCTTGAATCCCAGACACACTCCAGGAGCTGTTCCGCAAGTACCGAGTTTTG  
 GCAATTGGGGATGAAAAAGATCAAACCAGGAAAGAGGATGAACTTAAACAGCGTGGATGACATCCACTTT  
 CTGGTGTTCAGAACCTGATCCAGAGCACGCTGGCCCTCTCAGACAGTCAGATGAAGTCTTACCAGTCA  
 TTCCAGACTTTCCGCTCTATCGGGAGTACAAGGACCAGTTCTTGTGAAGGCCTTCATGGAGTGCCAG  
 AAGAGGAGCTTGGTCAACCGGCGCCGGTCAACCACACGCTGGGCCCAAGAAGAACCGGCCCTCCCC  
 TTCGTGCCAATGTCTACCAGCTATCCCAGACCTACTACAGGATTTTTACGTGGCGATTTCCAAGCACC  
 ATCTGCACGGAGTCATTCCAGTTTTTGGACAGAATGCGGGCTGCCGCAAGTTGGACCAGCCTGATCGT  
 TTCTCTTCAAAGACCAGGATAATAACGAGCCCAACACGACATGGTGGCCTTTTCACTGGACGGCCCT  
 GGAGGAAATTGTGTGGCCGCTCTGACCCTTTCTCTCTGGCCTCATTTCTGTGGATGTCAGGATCCCG  
 GAGCAGATCATCGTGGTAGACAGCTCAATGGTGGAGAATGAGGTATCAAAGCTTGGGGAAGGACGGC  
 AGCCTGGAGGATGACGAGGATGAAGAGGATGACTTGGACGAAGGTGTAGGGGGCAAGCGCCGGAGCATG  
 GAGGTGAAACCTGCGCAAGCCTCCCACACCAACTACCTGCTGATGAGGGGCTACTACTCCCCGGCATC  
 GTCAGCACCCGCAACCTCAACCCCAACGACAGCATTGTGGTCAACTCCTGCCAGATGAAGTTCAGCTC  
 CGCTGCACCCCTGTGCCCGCCGGCTCAGGCCCGCTGCCGCTCCTCTGGAAGAGCTAACAAATGGGAACC

TCCTGCCTCCCTGATACGTTACCAAGCTGATAAACCCCCAGGAAAACACCTGCAGCTTGGAGGAGTTT  
GTCCTCCAGCTGGAGCTGTCTGGGTATAGTCCCAGAACCTGACTGCTGCCTTGGAGATCTTGAAGCC  
ATTATAGCCACGGGTGTTTTGGGATTGACAAGGAGGAGCTGCGCAGACGGTTCTCGGCCTTGGAGAAG  
GCAGGTGGTGGGCGCACCAGGACATTCGAGATTGCATCCAGGCCCTCTGGAGCAGCATCAGGTGCTG  
GAGGTGCGTGGCAACTGCGCGCTGGTAGCCATGGGCTCTGCCTGGCCTTGGCTCCTGCACTCCGTG  
CGGCTGAAAGACAGAGAAGACGCCGACATCCAGAGAGAAGACCCCAAGCCAGACCCCTGGAGGGTCT  
TCCAGTGAGGACAGCCCCCGAGGGGCAGGCACCTCTTCTCACAGCCCCGGGCACCAAGAGGCGC  
GCCAGCTGGGCCAGTGAGAATGGGGAGACCGACGCCGAGGGCACCCAGATGACCCCTGCCAAGAGGCCA  
GCGCTCCAGGACTCAAATTTGGCCCCAGCCTTGGGCCCGGAGCTGAAGATGGGGCAGAAGCCAGGCC  
CCATCTCCACCCCAAGCTCTTGAAGACACCGCTGCAGCGGGAGCAGCACAGGAAGACCAAGAGGGTGT  
GGGTTACAGAGAGTTTCGGAGCTGCCAATCTCCCAGGCAGCACGGAAAGGGACTGTGAGAGTGTG  
TGCTTCATCGCCGGCCGTGGCGTGTGCGTGGATGGCCACCTGAACCTTCTGTATGCAAGGGTATGATG  
GAGGCCATGCTGTACCACATCATGACCAGGCTGGCATCCCCGAGAGCTCCCTGCTGCGCCACTACCAG  
GGGTCTGCAGCCGTCGCCGTGCTGGAGTTGCTCCAGGGCTGGAGTCCCTCGGCTGCATCCGGAAG  
CGCTGGCTGAGAAAGCCAAGGCCTGTCTGCTCTTCTCTACACCCGTGGTGAAGAGGTGAAGTGCCC  
TCCAGCCTGGACGAGAGCCCATGGCTTCTATGAGCCACCTTGGACTGTACCCTCCGGCTGGGCCGT  
GTGTTCCCCACGAGGTCAACTGGAACAAGTGGATCCACCTC  
ACGCGTACGCGGCCGCTCGAG - GFP Tag - GTTTAAAC

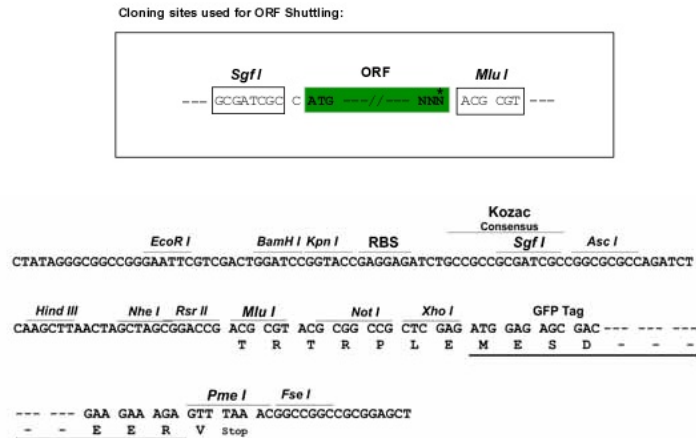
**Protein Sequence:**

>Peptide sequence encoded by RG240232  
 Blue=ORF Red=Cloning site Green=Tag(s)

MDALESLLDEVALEGLDGLCLPALWSRLETRVPPFPLPLEPCTQEFWRALATHPGISFYEEPRERPDL  
 QLQDRYEEIDLETGILESRRDPVALEDVYPIHMILENKDGIQGSCRYFKERKNI TNDIRTKSLQPRCTM  
 VEAFDRWGKKLIIVASQAMRYRALIGQEGDPDLKLPDFSYCILERLGRSRWQELQRDLHTTAFKVDAG  
 KLHYHRKILNKNGLITMQSHVIRLPTGAQQHSILLNRFHVDRRSKYDILMEKLSVMLSTRTNHIETL  
 GKLEELGLCERTFKRLYQYMLNAGLAKVVSRLRQEIHPECGPCKTKKGTDMVMRCLKLKEFKRNDHD  
 DDEEEVISTKTVPPVDIVFERDMLTQTYDLIERGKGI SQA EIRVAMNVGKLEARMLCRLLRQFKVVK  
 GFMEDEGRQRTTKYISCVFAEESDL SRQYQREKARSELL TTVSLASMQEESSLPEGEDTFLSESDSEEE  
 RSSSKRRGRGSQKDRASANLRPKTQPHHSTPTKGGWVNLHPLKQPPSPFGAAEERACQSLASRDS  
 LLDTSSVSEPNVSVFVSHCADNSGDI AVIEEVRMENPKESSSLKGRHSSGQDKPHETYRLLKRRNLI  
 IEAVTNLRLIESLFTIQMIMDQEQEGVSTKCKKSI VRLVRNLSEGLLRL YRTTVIQDGIKKKVDL  
 VVHPSMDQNDPLVRS AIEQVRFRI SNSSTANRVKTSQPPVPQGEAEEDSQGKEGSPSGSDSLSASSRS  
 ESGRMKSDNKMGITPLRNYHPIVVPGLRSLGFLPKMPRLRVVHMFLWYLIYGHASNTVEKPSFISE  
 RRTIKQESGRAGVRPSSSGSAWEACSEAPSKGSQDGVTWAEVELATETVYVDDASWMRYIPPVHRD  
 FFGFWALVSDILLCLPLSIFIQIVQVSYKVDNLEEFNDPLKKHTLIRFLPRPIRQQLLYKRRYIFSVV  
 ENLQRLCYMGLLQFGPTEKFQDKDQVFI FLKKNVIVDTTICDPHYNLARSSRPFERRLYVLSMQDVE  
 NYWFDLQCVCNLNPLGVVRCPRVRKNSSTDQGSDEEGLQKEQESAMDKHNLERKCAMLEYTTGSRREV  
 DEGLIPGDGLGAAGLDSSFYGH LKRNWIWTSYIINQAKKENTAAENGLTVRLQTFLSKRPMPLSARGNS  
 RLNIWGEARVGSSEL CAGWEEQFEVDREPSLDRNRVRGGKSQKRKRLKDPGKKIKRKKKGFEPGEKSK  
 RLRYHDEADQSALQRMTRLRVTWSMQEDGLLVL CRIASNVLNTKVKGPFVTWQVVRDILHATFEESLDK  
 TSHSVGRRARYIVKNPQAYLNKYVCLAEVYQDKALVGD FNMRRGDYDDPKVCANEFKEFVEKLEKFS  
 ALRNSNLEIPDTLQELFARYRVLAI GDEKDQTRKEDELNSVDDIHFLVLQNLIQSTLALSDSQMKSYS  
 FQTFRLYREYKDHVLVKAFMECQKRSLVNRNRVNHTLGPKNR ALPFVPMYSYQLSQTYYRIFTWRFPS  
 ICTESFQFLDRMRAAGKLDQPDFRF SFDQDNEPTNDMVAFLDGP GNCVAVLTLFSLGLISVDVRIP  
 EQIIVVDSMVENEVIKSLGKDGSL EDDDEEDDLDEGVGKRRSMEVKPAQASHTNYLLMRGYSPGI  
 VSTRNLNPND SIVVNSCQMKFQLRCTPVPARLRPAAAPLEELTMGT SCLPDTFTKLINPQENTCSLEEF  
 VLQLELSGYPEDLTAALEILEAIATGCFGIDKEELRRRFSALEKAGGRTRTFADCIQALLEQHQL  
 EVGGNTARLVAMGSAWPWLLHSVRLKDREDADIQREDPQARPLEGSSSEDSPEEQAPP SHSPRGTKRR  
 ASWASENGETDAEGTQMPAKRPALQDSNLAPSLGPGAEDGAE AQAPSPPPALEDTAAAGAAQEDQEGV  
 GFTE SFGAANISQAARERDCESVCFIGRPWRVVDGHLNLPVCKGMMEAMLYHIMTRPGIPESLLRHYQ  
 GVLQPVAVLELLQGLESLGCIKRKWL RKRPRVSLFSTPVVEEVEVPSSLESPMAFYEPTLDCTLR LGR  
 VFPHEVNWNKWIHL  
 TRTRPLEMESDESGLPAMEIECRITGTLNGVEFELVGGGEGTPEQGRMTNKMSTKGALTFSPYLLSHV  
 MGYGFYHFGTYPSGYENPFLHAINNGGYNTRIEKYEDGGVLHVSFSYRYEAGRVIGDFKVMGTGFPED  
 SVIFTDKIIRS NATVEHLHPMGDNDLDGSFTRTFSLRDGGYSSVVD SHMHFSAIHPSILQNGGPMFA  
 FRRVEEDHSNTELGIVEYQHAFKTPDADAGEERV

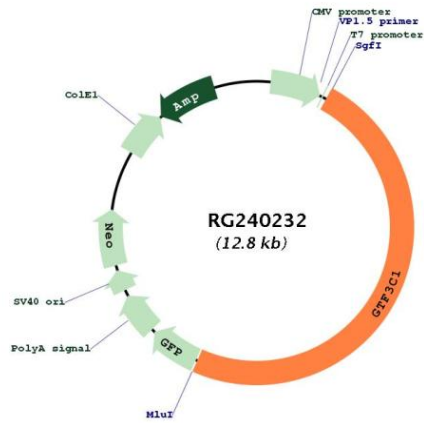
**Restriction Sites:**

Sgfl-MluI

**Cloning Scheme:**


- ACCN:** NM\_001286242
- ORF Size:** 6252 bp
- OTI Disclaimer:** The molecular sequence of this clone aligns with the gene accession number as a point of reference only. However, individual transcript sequences of the same gene can differ through naturally occurring variations (e.g. polymorphisms), each with its own valid existence. This clone is substantially in agreement with the reference, but a complete review of all prevailing variants is recommended prior to use. [More info](#)
- OTI Annotation:** This clone was engineered to express the complete ORF with an expression tag. Expression varies depending on the nature of the gene.
- Components:** The ORF clone is ion-exchange column purified and shipped in a 2D barcoded Matrix tube containing 10ug of transfection-ready, dried plasmid DNA (reconstitute with 100 ul of water).
- RefSeq:** [NM\\_001286242.2](#)
- RefSeq Size:** 7049 bp
- RefSeq ORF:** 6255 bp
- Locus ID:** 2975
- UniProt ID:** [Q12789](#)
- Cytogenetics:** 16p12.1
- MW:** 236.7 kDa
- Gene Summary:** Required for RNA polymerase III-mediated transcription. Component of TFIIC that initiates transcription complex assembly on tRNA and is required for transcription of 5S rRNA and other stable nuclear and cytoplasmic RNAs. Binds to the box B promoter element. [UniProtKB/Swiss-Prot Function]

Product images:



Circular map for RG240232