

## Product datasheet for **RG240231**

### **GARNL1 (RALGAPA1) (NM\_001283044) Human Tagged ORF Clone**

#### Product data:

Product Type:	Expression Plasmids
Product Name:	GARNL1 (RALGAPA1) (NM_001283044) Human Tagged ORF Clone
Tag:	TurboGFP
Symbol:	GARNL1
Synonyms:	GARNL1; GRIPE; NEDHRIT; p240; RalGAPalpha1; TULIP1
Mammalian Cell Selection:	Neomycin
Vector:	pCMV6-AC-GFP (PS100010)
E. coli Selection:	Ampicillin (100 ug/mL)
ORF Nucleotide Sequence:	>RG240231 representing NM_001283044. Blue=ORF Red=Cloning site Green=Tag(s)

```
GCTCGTTT TAGTGAACCGTCAGAATTTTGT AATACGACTCACTATAGGGCGGCCGGGAATTCGTCGACTG
GATCCGGTACCGAGGAGATCTGCCGCC GCGATCGCC
ATGTTCTCCAAGAAGCCGCACGGGGACGTGAAGAAGTCCACCCAGAAGGTGCTAGACACCAAGAAGGAC
GCACTGACTCGCCTCAAGCACCTGCGCATCGTATCGAGAATGCAGAATCTATTGATCTTAAACAGTTT
TTCGACCAACATTTTTACATATACTATGTGTTCTTTGAAAATTTTGACTATTGAAGCTAGTCTT
AAACAGAAAGGTCACAAGTCTCAAAGAGAGGAATTGGATGCTATACTTTTTATTTTGGAGAAAATTTTA
CAACTTCTCCAGAAAGAATTCATCAGCGATGGCAGTTTCATAGTATTGGATTGATTTAAAGAAGCTA
CTTCACACAGGAAACTCCTTAAAGATTAGCGGGAAAGGTTCGTCCTTTCTACTATGGTTGCAAGCT
CTTCAGAATAACTGTAGCAAAGAACAGCTCTGGATGTTTTCATGCTTAATCCCTGGATTTTCAGCACCA
CAGTCTGAACATGGACCTCGAACTTTAGATAATCTCATTAACTCCTCCACTCAACCTCAAGAAACTCAA
GTCATATAGAAGAAATCACTCCTTTGTCCCCCACAATCAGGAGATAAAGGGCAAGAAGATCTCACA
AGCTATTTTCTTGAAGCACTTCTAAAATACATAGTCATTCAGGTAAGGTTTAGAATGGAAGAACAAA
GAAAACCAAGAAAGGGGATTTTCATTTTGTGTTTACATTTTAAGAAATATTACTTGCCCTATATTTT
CCAAACATCTGTAAGGAAAACAGTTTATATCATCTATACTTGACATCCCGCAGATGAGACCAAAGCCA
CATTATGTCGTGATAAAGAAAGATGCTGAAACCAATGAAGCAATCTATTGTACAAAGGAGCCTTTTCATT
AAGGCTCGTGTTATTGTCATTCGTTGGCTGGTTTCTTTCTGGCTGGAGCCAAAACCATACAGGACCT
CATATTCCTGGGATGGAAGGTGAAGTCTTGCCAAAGAATATTCAGAGAGCAGCTGTAGTTTAGTATCC
AGAGAAGAAAGCAAAAATGATAATGCTGATAAAAACAGACAGAACTACAGAACCCGAACAGTCTCATTCC
AATACAAGCACTCTCACGGAGCGAGAACCTAGCTCATCTAGTCTCTGTAGTATTGATGAAGAATCTC
ACAGACATTGAAATAGTTCGAGAGTTTTTCTTCTAAAAGGAGTAATGTAACTTTGTGACAGAGATA
TTTCGTCAGGCATTTTTATTACCAATTTGTGAAGCAGCAGCTATGAGAAAAGTGGTAAAAGTATATCAA
GAATGGATCCAACAAGAGGAAAAACCTTTGTTTCATGCAAGAGCCTGAAGAAATTGTGATCACTTCTTCA
GACCTCCCTTGCAATGAAAATGTCACAGACCATGATATTTCAATGGAAGAAGGAGAAAAAGAGAAGAG
GAAAATGGGACCAATACTGCTGATCATGTTGCAAATTCAGTTGGCCAAAAACGGCTCCTACCAAGGT
```



[View online »](#)

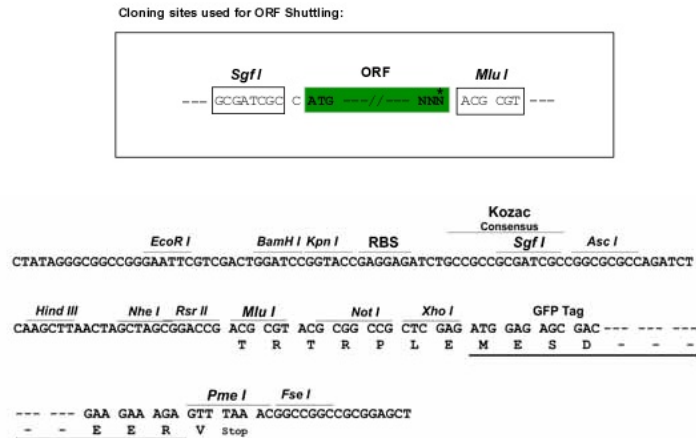
GCTCTTCATAACGCCTCTGAAGAAGCCACAGAACAAAACATACGAGCTGGTACCCAGGCAGTTTTGCAG  
 GTGTTTATTATAAACTCATCAAATATATTTCTTCTTGAACCTGCAAAATGAAATAAAAAATCTTCTGGAT  
 GAACACACAGATATGTGTAACGCATTCTTAACATTTATCGGTACATGGTTGTACAAGTATCAATGGAC  
 AAAAGACTTGGGAACAGATGCTGCTTGTGTTGCTCAGAGTCACGGAATCTGACTGAAGATGCCATCA  
 CAAGCTTTTCTACAGTCCAAGGGAAAAAATATGACCTTGGCAGGTCGACTTGCAGGACCACTTTTC  
 CAGACCCTTATAGTTGCCTGGATCAAAGCAAACCTAAATGTGTACATCTCCCGAGAAGCTTTGGGATGAC  
 TTACTGTCAGTATTGTCATCGCTGACCTATTGGGAAGAGTTGGCCACTGAGTGGTCACTGACTATGGAG  
 ACATTAACATAAAGTTTTAGCTAGGAATTTATATAGTTTGGATCTCAGTGATTTACCATTGGATAAGCTG  
 AGTGAACAGAAACAAAAAAGCACAAGGGAAAGGAGTTGGACATGAATTTAGAAAAGTTTCAGTTGAC  
 AAGTCATTTTCTAGAGGATGGAGTCGTGATCAGCCTGGCCAAGCCCAATGAGACAGAGGAGTGAACA  
 ACCACTGGTTCTCCAGGAACCGAAAAGGCGAGGAGTATAGTACGGCAAAAACTGTGCCATGAGAAGC  
 CGATCCATTGGTGAATGTGCTCTGCCATCGGCCTATATACGCAGTGTAAAAGTCTCTGTTCTGATC  
 CATACTCCAAACCTTCTTGCCTGATATTGTTCTCACTCCCCTTTCTGATGAGCTTTCAGATTTGAT  
 GATGCTCAAATACTTCCCGCTCAACTAGAGTCAGACATTTTTACAAAAGTGAAGAACTGGAAATGAA  
 GTTTTTGGTGCTTGAATGAGGAGCAGCCATTGCCTCGAAGTAGCAGCACTTCTGACATCTTGAACCA  
 TCACTGTTGAACGAGCCAAAGTCAATAAAGAGGACATGAGCCAAAAACTGCCTCCTTAAATAGTGAT  
 ATTTGGCGCAGCAGTGTAAATGTTCTGATCTGATGGATGAGTTTATAGCAGAACGACTTCGAAAGTGGT  
 AATGCCTCGACTATGACAAGAAGAGGAAGTAGTCCAGGCAGCCTGGAAATTTCCCAAAGACCTCCCTGAT  
 ATTCTAAACAAGCAGAACCAGATGCGCCCTATTGATGACCAGGTGTGCCCTCAGAAATGGACTTCTCCT  
 GCCAGTGCAGGGAGCAGTGTATATCAGCTCAGATAGTATTGGATTCTTTCAGCGCTTTCCAATAT  
 GATGGCCGAAAATTTGACAATTTGGCTTTGGAACCGACACTGGGGTTACGTCTCTGCTGATGTGGAT  
 TCAGGTTCTGGCCATCATCAGAGTGTGAAGAGCAGGAAGTGGCTAGTCTAACTACTCTTCATATAGAT  
 TCTGAAACAAGCAGTCTTAATCAGCAAGCTTTCTGCTGAAGTTGCAACTATTACTGGTTCAGAAAGT  
 GCTTCCCGAGTCCACTCACCTCTGGGCTCCAGGTACAGACTCCTTCCCTTCTACATTTGAATATAGAT  
 CACATGGAACAGAAAGGATCTGCAGCTCGACGAGAAGCTCCACCACTCTGTTCTTCCAGACACCAGATGAT  
 CTAGAAATTAGTGAATTTCCATCAGAATGTTGTAGTGTGATGGCAGGAGTACTCTGACTGGATGGCAT  
 GCTGATGTTGCTACTGTAATGTGGCGAAGAATGCTAGGCATTTTGGGAGATGTAATTTCAATCATGGAT  
 CCTGAAATACATGCTCAAGTTTTGATTACCTCTGTGAAGTTTGGCAGAATCTAGCTAAGATTAGAGAT  
 AACCTTGGCATTCAACTGATAACCTGACCTCCCCTTCTCCACCAAGTTTTAATCCTCCACTGAGAATT  
 CTTACACCTTGGCTTTTTAAGGCAACCATGTTGACTGATAAATAAAACAAGGTAATTTACATGCATAT  
 AAATTTATTTGTAATACAATGAAAAGAAGACAAGATGTTTCTCCAAATAGAGATTTTCTAACACATTTTC  
 TACAATATAATGCATTGTGGATTACTTCATATTGACCAGGATATTGTCAATACAATCATAAACACTGC  
 TCACCTCAATTTTTTCACTTGGTTTGCCTGGTGGCCACAATGCTTATTATGGATTTTATTGTAGCAGCT  
 GGTAGAGTGGCTTCTCAGCTTTTCTCAATGCACCAAGAGTAGAAGCACAAGTCTTCTGGGATCTTTG  
 GTTTGCTTTCCCACTTATATTGTGAAGTGCCTTCTTTCATCCCAACATTTCTGATGTTGCTGTGCT  
 CAGTTTACAGATGTTAAGGAAGTATAATCAAACTGTATTAAGTCTGGCAAGAGATGAGCCCTCTGGT  
 CCTGCACGATGTGTAGCACTTTGTAGTTAGGTATTTGGATTTGTGAAGAACTAGTCCATGAGTCTCAT  
 CATCCTCAAATTAAGGAAGCTCTGAATGTGATTTGTGTTTCTTAAAGTTTACTAATAAAACAGTAGCC  
 CAGTAGCTTGTAAACATGCTTCCATGCTGGTTCATTATGTACCTAGACTCAGATTTACCAGCCTGAT  
 TCTCCCTTGAAAATTATTCAAATCCTAATAGCTACCATCACCCATCTTTTACCAAGTACAGAGGCTTCA  
 TCTTATGAAATGGACAAGAGTTGGTAGTATCTTTACTTCTCTGCCTTCTGGACTGGATCATGGCCTTA  
 CCTCTAAAGACTGCTCCAACCATTTCTGCTACGGGAGCAGAAAGCGATAAAACAGAAAAATCTGTT  
 CTCAATTCGATTTATAAGGTTTTACATGGGTGTGTTTATGGAGCTCAGTGTTTTAGCAATCCAAGGTAT  
 TTTCCCATGAGCCTCTGATTTGGCATCTGTAGATTATGATCCTTTTATGCATTTGAAAAGTCTGAAA  
 GAGCCTGAGCCTCTGCACTCTCCTGACTCAGAACGATCTTCTAACTCCAGCCAGTAACAGAAGTGA  
 ACTCAAATGCAGCATGGATTAATCTCTATAGCAGCCCGCACTGTTATTACACATCTGGTAAATCACCTG  
 GGCCATTATCCAATGAGCGGTGGTCTGCTATGCTAACAAGTCAAGTGTGTGAAAATCACGACAATCAT  
 TACAGTGAAGTACTGAACTTTCTCCTGAACTCTTTGAGAGTCCAAATATCCAGTTCTTTGTGTTAAAT  
 AATACAACCTTAGTGCCTGTATCCAGATCAGATCAGAAGAGAATATGCCTGGAGGAGGTTTATCTGCT  
 GGCTTGCATCAGCCAATTCAAATGTCAGAATCATAGTACGTGATCTCTGGAATAATTCATGGGAT  
 TCTGCTACTGTATGGCCACCTCCTGTAAGTGGCTTGTGAGAACCACATCTTTCATGCTTTCATTG  
 TCTCCAAGAGAAGCCAGAAGAGCCTCCGACATCTAATGAATGCTTAGAAGATAAACCCTAAAAGT

GGACTTTCTCTCCAGTTTAAAAGATTTAGAGAACTGTACCAACTGGGATACAATAAGAGATGAAGAA  
GATGTTCTTGATGAGCTCTTGCAGTATTTGGGTGTTACTAGTCCTGAATGCTTACAGAGAACTGGAATC  
TCCTTAATATTCCTGCTCCACAACCTGTGTGCATTTCTGAAAAACAAGAAAATGATGTTATTAATGCT  
ATCCTTAAGCAACATACAGAAGAAAAAGAATTTGTTGAGAAGCACTTTAATGACTTAAACATGAAAGCT  
GTGGAACAAGATGAACCAATACCTCAAAAACCTCAGTCAGCATTATTTATTGCAGATTGCTTCTTAGT  
ATATTGGGAATGAATTCCTGGGACAAACGGAGGAGCTTTCATCTCCTGAAGAAAAATGAAAGCTACTT  
AGAGAACTTAGGAACTTGATTCAAGGCAGTGCCGAGAGACACACAAGATTGCAGTATTTTATGTTGCT  
GAAGGACAAGAAGACAAACACTCCATTCTACCAATACAGGAGGAAGTCAAGCATATGAAGATTTTGTA  
GCTGGTCTTGGTTGGGAGGTAATCTTACAAACCATTGTGGTTTTATGGGAGGACTACAAAAAACA  
AGCACTGGATTGACCACTCCATATTTTGCTACCTCTACAGTAGAGGTAATATTTACGTGTCAACAAGA  
ATGCCTTCTGATTCTGATGATTCTTTGACCAAAAAATTGAGACATTTGGGAAATGATGAAGTGCACATT  
GTTTGGTCAGAGCATACTAGAGACTACAGGAGAGGAATTATCCACAGAATTTGGTGATGCTTATT  
GTAATATATCCAATGAAAAATCACATGTTTCAGTATTCAGATAATGAAAAACCAGAGGTTCCCTTTT  
GGTCCCCTTTTGGATGGTGCTATTGTGAATGGAAAGTTCTACCCATTATGGTTAGAGCAACAGCTATA  
AATGCAAGCCGTGCTCTGAAATCTCTGATTCCATTGTATCAAACTTCTATGAGGAGAGAGCAGCATA  
CTGCAACAATTGTCCAGCACCCTTAGAACCAACAACATTTGAAGATTTGCAGCACAGGTTTTTTCT  
CCAGCTCCCTACCACCATTACCATCTGATGCCGATCAT  
ACGCGTACGCGGCCGCTCGAG - GFP Tag - GTTTAAAC

**Protein Sequence:** >Peptide sequence encoded by RG240231  
 Blue=ORF Red=Cloning site Green=Tag(s)

MFSKPKPHGDVKKSTQKVLDTKKDALTRLKHLRIVIENAESIDLKQFFDQHFHSHIYYVFFENFVTIEASL  
 KQKGHKSQREELDAILFIFEKILQLLPERIHQRWQFHSIGLILKKLLHTGNSLKIRREGVRLFLLWQA  
 LQNNCSKEQLWMFSCLIPGFSAPQSEHGPRTLDNLINPPLNLQETQVTIEEITPLVPPQSGDKGQEDLT  
 SYFLEALLKYIVIQVKSLEWKNKENQERGFSLFSHFKYYLPYIFPNICKENSLYHPILDIPQMRPKP  
 HYVVIKKDAETNEAIYCTKEPFIKARVIVIRWLVSFWLEPKPHTGPHIPGMEGEVLPKNIQRAAASLVS  
 REESKNDNADKTRTTEPEQSHSNTSTLTEREPSSSSLCSIDEHLLTDIEIVRRVFSKRSNVNFVTEI  
 FRQAFLLPICEAAAMRKVVKVYQEWIQEKEKPLFMQEPEEIVITSSDLPCIENVTDHDISMEEGEKREE  
 ENGTNTADHVRNSSWAKNGSYQALHNAEEATEQNIRAGTQAVLQVFIINSSNIFLLEPANEIKNLLD  
 EHTDMCKRILNIYRMMVQVSMCKKTWEQMLLVLLRVTESVLKMPQAFQFQGGKNMMLAGRLAGPLF  
 QTLIVAWIKANLVVYISRELWDDLLSVLSSLTYWEELATEWSLTMETLTKVLARNLYSLDLSLPLDKL  
 SEQKQKHKHKGKGVGHEFQKVSVDKFSRGSWRDQPGQAPMRQRSATTTGSPGTEKARSIVRQKTAMRS  
 RSIGECALPSAYIRSAKSAPVL IHTSKPFLPDI VLTPLSDELSDIDDAQILPRSTRVRHFSQSEETGNE  
 VFGALNEEQPLPRSSSTSDILEPFTVERAKVNKEDMSQKLPLNSDIGGSSANVPDLMDEFIAERLRSG  
 NASTMTRRGSSPGSLEIPKDLPDILNKQNMRIIDDPGVSEWTPASAGSSDLISSDSHDSFSAFYQ  
 DGRKFDNFGFGTDTGVTSSADVDSGSGHHQSAEEQEASLTTLHIDSETSSLNQQAFSAEVATITGSES  
 ASPVHSPGSRSTPSPSTLNIDHMEQKDLQLDEKLHHSVLQTPDDLEISEFPSECCSVMAGGTLTGWH  
 ADVATVMWRMLGILGDVNSIMDPEIHAQVFDYLCWLNQAKIRDNLGISTDNL TSPSPVLIPLRI  
 LTPWLFKATMLTDKYKQKGLHAYKLCINTMKRRQDVSPNRDFLTHFYINMHCGLLHIDQDIVNTIKHC  
 SPQFFSLGLPGATMLIMDFIVAAGRVAASAF LNAPRVEAQVLLGSLVCFPNLYCELPSLHPNIPDVAVS  
 QFTDVKELIIKTVLSSARDEPSGPARCVLCSLGIWICEELVHESHHPQIKEALNVICVSLKFTNKTV  
 HVACNMLHMLVHYVPRLQIYQDPSLKI IQIL IATITHLLPSTEASSYEMDKRLVVSLLLCLLDWIMAL  
 PLKTLQPFHATGAESDKTEKSVLNCIYKVLHGCYGAQCFSNPRYFPMSSDLASVDYDPPFMHLESLK  
 EPEPLHSPDSERSKLPVTEVKTQMQLGLISIAARTVITHLVNHLGHYPMSGGPAMLSQVCENHDNH  
 YSESTELSPELFESPNIQFFVLNNTTLVSCIQIRSEENMPGGGLSAGLASANSNRIIVRDLGKYSWD  
 SAILYGGPPVSGLSEPTSFMLSLSHQEKPEEPTSNECLEEDITVKDGLSLQFKRFRETVPWTDIRDEE  
 DVLDELLQYLGVTSPACLQRTGISLNIPAPQVCISEKQENDVINAILKQHTEEKEFVEKHFNDLNMKA  
 VEQDEPIQKQSAFYCRLLLSILGMNSWDKRRSFHLLKKNKLLRELRLNDSRQCRETHKIAVFYVA  
 EGQEDKHSILTNTGGSQAYEDFVAGLGEVNL TNHCGFMGGLQKNKSTGLTTPYFATSTVEVIFHVSTR  
 MPSDSDSLTKKLRHLGNDEVHIVWSEHTRDYRRGIIPTEFGDVLIVIYPMKNHMF SIQIMKKPEVPPF  
 GPLFDGAIVNGKVLPIVVRATAINASRALKSLIPLYQNFYEERARYLQTI VQHLEPTTFEDFAAQVFS  
 PAPHHLPSADH  
 TRTRPLEMESDESGLPAMEIECRITGTLNGVEFELVGGGEGTPEQGRMTNKMSTKGALTFSPYLLSHV  
 MGYGFYHFGTYPSGYENPFLHAINNGGYNTRIEKYEDGGVLHVSFSYRYEAGRVIGDFKVMGTGFPED  
 SVIFTDKIIIRSNATVEHLHPMGDNDLDGSFTRTFSLRDGGYSSVVDSHMHFKSAIHPSILQNGGPMFA  
 FRRVEEDHSNTELGIVEYQHAFKTPDADAGEERV

**Restriction Sites:** SgfI-MluI

**Cloning Scheme:**


**ACCN:** NM\_001283044

**ORF Size:** 6249 bp

**OTI Disclaimer:** The molecular sequence of this clone aligns with the gene accession number as a point of reference only. However, individual transcript sequences of the same gene can differ through naturally occurring variations (e.g. polymorphisms), each with its own valid existence. This clone is substantially in agreement with the reference, but a complete review of all prevailing variants is recommended prior to use. [More info](#)

**OTI Annotation:** This clone was engineered to express the complete ORF with an expression tag. Expression varies depending on the nature of the gene.

**Components:** The ORF clone is ion-exchange column purified and shipped in a 2D barcoded Matrix tube containing 10ug of transfection-ready, dried plasmid DNA (reconstitute with 100 ul of water).

**RefSeq:** [NM\\_001283044.3](#)

**RefSeq Size:** 6666 bp

**RefSeq ORF:** 6252 bp

**Locus ID:** 253959

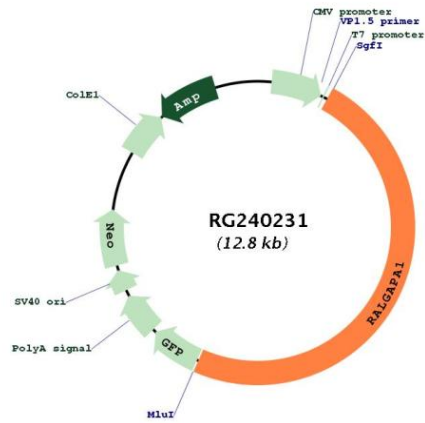
**UniProt ID:** [Q6GYQ0](#)

**Cytogenetics:** 14q13.2

**MW:** 235.3 kDa

**Gene Summary:** This gene encodes a major subunit of the RAL-GTPase activating protein. A similar protein in mouse binds E12, a transcriptional regulator of immunoglobulin genes. The mouse protein also functions in skeletal muscle by binding to the regulatory 14-3-3 proteins upon stimulation with insulin or muscle contraction. A pseudogene of this gene has been identified on chromosome 9. [provided by RefSeq, Oct 2016]

Product images:



Circular map for RG240231