

## Product datasheet for **RG240177**

### EIF4G1 (NM\_001291157) Human Tagged ORF Clone

#### Product data:

Product Type:	Expression Plasmids
Product Name:	EIF4G1 (NM_001291157) Human Tagged ORF Clone
Tag:	TurboGFP
Symbol:	EIF4G1
Synonyms:	EIF-4G1; EIF4F; EIF4G; EIF4GI; P220; PARK18
Mammalian Cell Selection:	Neomycin
Vector:	pCMV6-AC-GFP (PS100010)
E. coli Selection:	Ampicillin (100 ug/mL)
ORF Nucleotide Sequence:	>RG240177 representing NM_001291157. Blue=ORF Red=Cloning site Green=Tag(s)

```
GCTCGTTTGTAGTGAACCGTCAGAATTTGTAAACGACTCACTATAGGGCGCCGGGAATTCGTCGACTG
GATCCGGTACCGAGGAGATCTGCCGCCGCGATCGCC
ATGAACACGCCTTCTCAGCCCCGCCAGCACTTCTACCCTAGCCGGGCCAGCCCCGAGCAGTGCAGCC
TCCCGAGTGCAGAGTGCAGCCCCGCCCCGCTGGCCAGCTGCCATGTCTACCCTGCTGGATCCCAA
GTAATGATGATCCCTTCCAGATCTCCTACCCAGCCTCCAGGGGGCCTACTACATCCCTGGACAGGGG
CGTTCCACATACGTTGTCCCGACACAGCAGTACCCTGTGCAGCCAGGAGCCCCAGGCTTCTATCCAGGT
GCAAGCCCTACAGAATTTGGGACCTACGCTGGCGCCTACTATCCAGCCCAAGGGGTGCAGCAGTTTCCC
ACTGGCGTGGCCCCGCCAGTTTTGATGAACCAGCCACCCAGATTGCTCCCAAGAGGGAGCGTAAG
ACGATCCGAATTCGAGATCCAAACCAAGGAGGAAAGGATATCACAGAGGAGATCATGTCTGGGGCCCGC
ACTGCCTCCACACCCACCCCTCCCAGACGGGAGGCGGTCTGGAGCCTAAGCTAATGGGGAGACGCC
CAGGTTGTCTGTCATTGTCCGGCCAGATGACCGGTACAGGGAGCAATCATTGCTGACCGGCCAGGGCTG
CCTGGCCAGAGCATAGCCCTTCAGAAATCCCAGCCTTCGTGCGCTTCTCCGACCCATCACCATCCCCA
GTCTTGGAAACGGGGTCTGAGCCTAATCTCGCAGTCTCTCTATTCTGGGGACACTATGACAACTATA
CAAATGTCTGTAGAAGAATCAACCCCATCTCCCGTAAACTGGGGAGCCATATCGCCTCTCTCCAGAA
CCCCTCTCTCGCCGAACCCATACTGGAAGTAGAAGTGACACTAGCAAACCGGTTCCAGAATCTGAG
TTTTCTTCCAGTCTCTCCAGGCTCCCACCCCTTTGGCATCTCACACAGTGGAAATTCATGAGCCTAAT
GGCATGGTCCCATCTGAAGATCTGGAACCAGAGGTGGAGTCAAGCCAGAGCTTGCTCCTCCCCAGCT
TGCCCCCTCCGAATCCCCTGTGCCATTGCTCCTCAACTGCCAACCTGAGGAACTGCTCAACGGAGCCCC
TCGCCACCAGCTGTGGACTTAAGCCAGTCAGTGAGCCAGAGGAGCAGGCCAAGGAGGTGACAGCATCA
ATGGCGCCCCCACCATCCCCTCTGCTACTCCAGCTACGGCTCCTTCCAGTACTTCCCCAGCTCAGGAG
GAGGAAATGGAAGAAGAAGAAGAAGAGGAAGAAGGAGAAGCAGGAGAAGCAGGAGAAGCTGAGAGTGAG
AAAGGAGGAGAGGAACTGCTCCCCCAGAGAGTACCCCTATTCCAGCCAATTGTCTCAGAATTTGGAG
GCAGCAGCAGCCACTCAAGTGGCAGTATCTGTGCCAAAGAGGAGACGGAAAATTAAGGAGCTAAATAAG
AAGGAGGCTGTTGGAGACCTTCTGGATGCCTTCAAGGAGGCGAACCCGGCAGTACCAGAGGTGAAAAAT
```



[View online »](#)

CAGCCTCCTGCAGGCAGCAATCCAGGCCAGAGTCTGAGGGCAGTGGTGTGCCCCACGTCTGAGGAA  
 GCAGATGAGACCTGGGACTCAAAGGAAGACAAAATTCACAATGCTGAGAACATCCAGCCCGGGAACAG  
 AAGTATGAATATAAGTCAGATCAGTGGAAAGCCTCTAAACCTAGAGGAGAAAAACGTTACGACCGTGAG  
 TTCCTGCTTGGTTTTAGTTTCATCTTTGCCAGTATGCAGAAGCCAGAGGGATTGCCACATATCAGTGAC  
 GTGGTGTGGACAAGGCCAATAAAACACCACTGCGGCCACTGGATCCCACTAGACTACAAGGCATAAAT  
 TGTGGCCAGACTTCACTCCATCCTTTGCCAACCTTGGCCGACAAACCTTAGCACCCGTTGGGCCCA  
 AGGGTGGGCCAGGTGGGGAGCTGCCCGTGGCCGGCTGGCCTGGGACCCCGGCTCTCAGCAGGGA  
 CCCCAGAAAAGAACCCACGCAAGATCATTGCCACAGTGTAAATGACCGAAGATATAAAACTGAACAAAGCA  
 GAGAAAGCCTGGAACCCAGCAGCAAGCGGACGCGGCTGATAAGGATCGAGGGGAAGAAGTGTGAT  
 GGCAGCAAAACCCAGGACCTATTCCGAGGGTGCCTCCATCCTGAATAAACTGACACCCAGATGTTC  
 CAGCAGCTGATGAAGCAAGTGACGCAGCTGGCCATCGACACCGAGGAACGCCTCAAAGGGTTCATTGAC  
 CTCATTTTTGAGAAGGCCATTTAGAGCCCACTTCTCTGTGGCCTATGCCAACATGTGCCGCTGCCTC  
 ATGGCGCTGAAAGTGCCCACTACGAAAAGCCAAACAGTACTGTGAACTCCGAAAGCTGTTGTTGAAT  
 CGATGTCAGAAGGAGTTTGAAGAACAAAGATGATGATGAGGTTTTTGAAGAAGCAAAAGAGATG  
 GATGAAGCTGCTACGGCAGAGGAACGAGGACGCCTGAAGGAAGAGCTGGAAGAGGCTCGGGACATAGCC  
 CGGCGGCCTCTTAGGGAATATCAAGTTATTGGAGAGTTGTTCAAACCTGAAGATGTTAACAGAGGCA  
 ATAATGCATGACTGTGTGGTCAAACCTGCTTAAGAACCATGATGAAGAGTCCCTTGAGTGCCTTTGTCGT  
 CTGCTCACCACCTATTGGCAAAGACTGGACTTTGAAAAGCCAAAGCCCGAATGGATCAGTATTTCAAC  
 CAGATGGAAAAATCATTAAAGAAAAGAAGACGTCATCCCGCATCCGCTTATGCTGCAGGACGTGCTG  
 GATCTGCGAGGGAGCAATTGGGTGCCACGCCGAGGGGATCAGGGTCCCAAGACCTTACCCAGATCCAT  
 AAGGAGGCTGAGATGGAAGAATCGAGAGCACATCAAAGTGCAGCAGCTCATGGCCAAGGGCAGTGAC  
 AAGCGTCGGGGCGGTCTCCAGGCCCTCCATCAGCCGTGGACTTCCCTTGTGGATGATGGTGGCTGG  
 AACACAGTTCCCATCAGCAAAGTACCCGCCCATTTGACACCTCAGCACTCACCAAGATCAACCAAGCCT  
 GGCTCCATCGATTCTAACCAACCAGCTCTTTGCACCTGGAGGGCGACTGAGCTGGGGCAAGGGCAGCAGC  
 GGAGGCTCAGGAGCCAAGCCCTCAGACGCAGCATCAGAAGCTGCTCGCCAGCTACTAGTACTTTGAAT  
 CGCTTCTCAGCCCTTCAACAAGCGGTACCCACAGAAAAGCACAGATAATAGACGTGTGGTGCAGAGGAGT  
 AGCTTGAGCCGAGAACGAGGCGAGAAAGCTGGAGACCGAGGAGACCGCCTAGAGCGGAGTGAACGGGGA  
 GGGGACCGTGGGACCGGCTTATCGTGCAGGACACCTGCTACCAAGCGGAGCTTACGCAAGGAAGTG  
 GAGGAGCGGAGTAGAGAACGGCCCTCCAGCCTGAGGGGCTGCGCAAGGCAGCTAGCCTCACGGAGGAT  
 CGGGACCGTGGGCGGATGCCGTGAAGCGAGAAGCTGCCCTACCCCAAGTGAAGCCCTGAAGGCGGCT  
 CTCTCTGAGGAGGAGTTAGAGAAGAAATCCAAGGCTATCATTGAGGAATATCTCCATCTCAATGACATG  
 AAAGAGGCAGTCCAGTGGGTGCAGGAGCTGGCCTCACCCCTCCTTCTTCTCATCTTTGTACGGCATGGT  
 GTCGAGTCTACGCTGGAGCGCAGTGCCATTGCTCGTGAGCATATGGGGCAGCTGCTGCACCAGCTGCTC  
 TGTGCTGGGCATCTGTCTACTGCTCAGTACTACCAAGGGTTGATGAAATCTTGGAAATGGCTGAGGAC  
 ATGGAAATGACATCCCCACGTGTGGCTTACCTAGCGGAACTGGTAACACCCATTCTGCAGGAAGGT  
 GGGGTGCCATGGGGGAGCTGTTAGGGGAGATTACAAAGCCTCTGAGACCGTTGGGCAAGCTGCTTCC  
 CTGTTGCTGGAGATCCTGGGCCCTGTGCAAAAGCATGGGTCTAAAAGGTGGGGACGCTGTGGCGA  
 GAAGCCGGGCTTAGCTGGAAGGAATTTCTACCTGAAGGCCAGGACATTGGTGCATTCTGCTGCTGAACAG  
 AAGTGGAGTATACCTGGGAGAGGAGTCGGAAGCCCTGGCCAGAGGGCACTCCCTCCGAGGAGCTG  
 AACAGGCAGCTGGAAGCTGCTGAAGGAGGGCAGCAGTAACAGCGGGTGTTCGACTGGATAGAGGCC  
 AACCTGAGTGAGCAGCAGATAGTATCCAACACGTTAGTTGAGCCCTCATGACGGCTGTCTGCTATTCT  
 GCAATTTTTTGGAGTCCCCTCCGAGTGGACGTTGAGTGTGAAAGCGGAGCGAAGCTGCTGCAG  
 AAATACCTGTGTGACGAGCAGAAGGAGCTACAGGGCTCTACGCCCTCCAGGCCCTTGTAGTGACCTTA  
 GAACAGCCTCCCAACCTGCTGCGGATGTTCTTTGACGCACTGTATGACGAGGACGTGGTGAAGGAGGAT  
 GCCTTCTACAGTTGGGAGAGTAGCAAGGACCCCGCTGAGCAGCAGGGCAAGGGTGTGGCCCTAAATCT  
 GTCACAGCCTTCTCAAGTGGCTCCGTGAAGCAGAGGAGGAGTCTGACCACAAC

ACGCGTACGCGGCCGCTCGAG - GFP Tag - GTTTAAAC

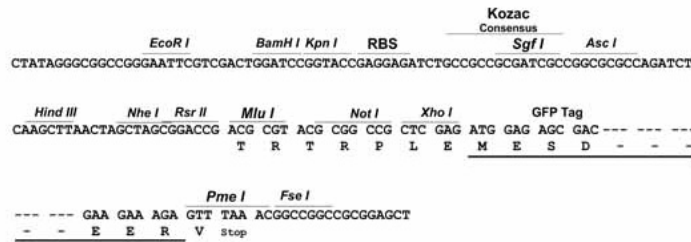
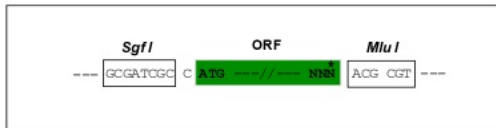
**Protein Sequence:** >Peptide sequence encoded by RG240177  
 Blue=ORF Red=Cloning site Green=Tag(s)

MNTPSQPRQHFYPSRAQPPSSAASRVQSAAPARPGPAAHVYPAGSQVMMIPSQISYPASQGAYYIPGQG  
 RSTYVVPTQQYYPVQPGAPGFYPGASPTFEGTYAGAYYPAQGVQQFPTGVAPAPVLMNQPPQIAPKRERK  
 TIRIRDPNQGGKDIETEEIMSGARTASTPTPPQTGGGLEPQANGETPQVAVIVRPDDRSQGAIIADRPGL  
 PGPEHSPSESQPSSPSPTPSPSPVLEPGSEPNLAVLSIPGDMTTIQMSVEESTPI SRETGEPYRLSPE  
 PTPLAEPILLEVEVTL SKVPPESEFSSSPLQAPTPLASHTVEIHEPNGMVPSEDLPEVESSPELAPPPA  
 CPSESPVPIAPTAQPEELLNGAPSPPAVDLSPVSEPEEQAKEVTASMAPPTIP SATPATAPSATSPAQE  
 EEEEEEEEEEGEAGEAGEAESEKGGEE LLPPESTPIPANLSQNLEAAAAATQVAVSVPKRRRRIKELNK  
 KEAVGDL L DAFKEANPAVPEVENQPPAGSNPGPESESGVPPRPEEADETWDSKEDKIHNAENIQPGEQ  
 KYEYKSDQWKPLNLEEKRYDREFLLGFQFIFASMQKPEGLPHISDVVLDKANKTPLRPLDPTRLQGIN  
 CGPDFTPSFANLGR TTLSTRGPPRGGGGELPRGPAGLGPRRSQQGPRKEPRKI IATVLMTE DIKLNKA  
 EKAWKPSKRTAADKDRGEEDADGSKTQDLFRRVRSILNKLTPQMFQQLMKQVTLAIDTEERLKGVID  
 LIFEKAISEPNF SVAYANMCRCLMALKVPTTEKPTVTVNFRKLLNRCQKEFEKDKDDDEVFEKKQKEM  
 DEATAAERGR LKEELEEARDIARRRSLGNIKF IGELFKLMLTEAIMHDCVVKLLKNHDEESLECLCR  
 LLTTIGKDLDFEKAKPRMDQYFNQMEKIIKEKKTSSRIRFMLQDVLDLRGNSWVPRRGDQGPKTIDQIH  
 KEAEMEEHREHIKVQQLMAKGS DKRRGGPPGPI SRGLPLVDDGGWNTVPI SKGSRPIDT SRLTKITKP  
 GSIDSNNQLFAPGGRLSWGKGSSGGGAKPSDAASEAARPATSTLNRFSALQQAVPTESDNRVVQRS  
 SLSRERGEKAGDRGDR LERSERGGDRGDR LDRARTPATKRSFSKEVEERSRERPSQPEGLRKAASLTED  
 RDRGRDAVKREAA LPPVSPLKAALSEEELEKSKAIEEYHLNDMKEAVQCVQELASPLLFIFVRHG  
 VESTLERSAIAREHMGLLHQLLCAGHLSTAQYYQGLYEILELAEDMEIDIPHWLYLAELVTPILQEG  
 GVPMGELFREITKPLRPLGKAASLLLEILGLLCKSMGPKKVGTLWREAGLSWKEFLPEGQDIGAFVAEQ  
 KVEYTLGEESEAPGQRALPSEELNRQLEKLLKEGSSNQRVFDWIEANLSEQQIVSNTLVRALMTAVCYS  
 AII FETPLRVDVAVLKARAKLLQKYL CDEQKELQALYALQALVVTLEQPPNLLRMFFDALYDEDVVKED  
 AFYSWESSKDPAEQQGKGVALKSVTAFFKWLREAEESDHN  
**TRTRPLEMESDESGLPAMEIECRITGTLNGVEFELVGGGEGTPEQGRMTNKMSTKGALTFSPYLLSHV**  
 MGYGFYHFGTYPSGYENPFLHAINNGGYNTRIEKYEDGGVLHVSFSYRYEAGRVIGDFKVMGTGFPED  
 SVIFTDKIIRSNATVEHLHPMGDNDLDGSFTRTFLRDGGYSSVVD SHMHFKSAIHPSILQNGGPMFA  
 FRRVEEDHSNTELGIVEYQHAFKTPDADAGEERV

**Restriction Sites:** SgfI-MluI

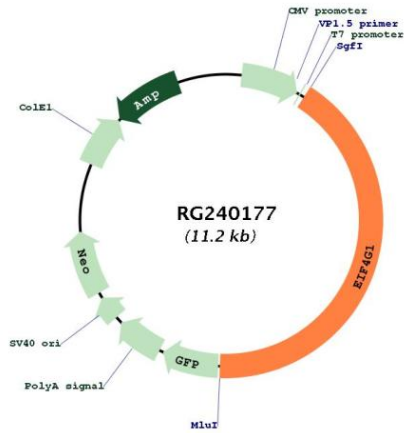
**Cloning Scheme:**

Cloning sites used for ORF Shutting:



<b>ACCN:</b>	NM_001291157
<b>ORF Size:</b>	4677 bp
<b>OTI Disclaimer:</b>	The molecular sequence of this clone aligns with the gene accession number as a point of reference only. However, individual transcript sequences of the same gene can differ through naturally occurring variations (e.g. polymorphisms), each with its own valid existence. This clone is substantially in agreement with the reference, but a complete review of all prevailing variants is recommended prior to use. <a href="#">More info</a>
<b>OTI Annotation:</b>	This clone was engineered to express the complete ORF with an expression tag. Expression varies depending on the nature of the gene.
<b>Components:</b>	The ORF clone is ion-exchange column purified and shipped in a 2D barcoded Matrix tube containing 10ug of transfection-ready, dried plasmid DNA (reconstitute with 100 ul of water).
<b>RefSeq:</b>	<a href="#">NM_001291157.1</a> , <a href="#">NP_001278086.1</a>
<b>RefSeq Size:</b>	5581 bp
<b>RefSeq ORF:</b>	4680 bp
<b>Locus ID:</b>	1981
<b>Cytogenetics:</b>	3q27.1
<b>Protein Pathways:</b>	Viral myocarditis
<b>MW:</b>	171.9 kDa
<b>Gene Summary:</b>	The protein encoded by this gene is a component of the multi-subunit protein complex EIF4F. This complex facilitates the recruitment of mRNA to the ribosome, which is a rate-limiting step during the initiation phase of protein synthesis. The recognition of the mRNA cap and the ATP-dependent unwinding of 5'-terminal secondary structure is catalyzed by factors in this complex. The subunit encoded by this gene is a large scaffolding protein that contains binding sites for other members of the EIF4F complex. A domain at its N-terminus can also interact with the poly(A)-binding protein, which may mediate the circularization of mRNA during translation. Alternative splicing results in multiple transcript variants, some of which are derived from alternative promoter usage. [provided by RefSeq, Aug 2010]

Product images:



Circular map for RG240177