

## Product datasheet for **RG240167**

### NUP153 (NM\_001278209) Human Tagged ORF Clone

#### Product data:

Product Type:	Expression Plasmids
Product Name:	NUP153 (NM_001278209) Human Tagged ORF Clone
Tag:	TurboGFP
Symbol:	NUP153
Synonyms:	HNUP153; N153
Mammalian Cell Selection:	Neomycin
Vector:	pCMV6-AC-GFP (PS100010)
E. coli Selection:	Ampicillin (100 ug/mL)
ORF Nucleotide Sequence:	>RG240167 representing NM_001278209. Blue=ORF Red=Cloning site Green=Tag(s)

```
GCTCGTTT TAGTGAACCGTCAGAATTTTGT AATACGACTCACTATAGGGCGCCGGGAATTCGTGACTG
GATCCGGTACCGAGGAGATCTGCCGCC GCGATCGCC
ATGGCCTCGGGAGCCGGAGGAGTCGGAGGGGGCGGTGGCGGAAGATCCGGACGCGGCGTTGCCACCAG
GGGCCAATTAAGCCTTACCAGCAGGGGCGACAACAGCATCAGGGCATTCTTAGCAGGGTTACAGAATCT
GTTAAGAATATTGTGCCAGGGTGGCTACAAAGATACTTCAACAAGAATGAAGATGTATGCAGCTGTTCA
ACAGACACAAGCGAGGTTCCACGCTGGCCAGAAAATAAAGAGGACCATCTGGTATATGCCGATGAGGAG
AGCTCTAATACTGATGGGAGAATCACACCTGAGCCAGCAGTCAGTAACAGAAGAACCTTCAACA
ACTAGTACTGCTCAAATTATCCAGATGTGTTAACAAGGCCTTCTTTCATCGGAGCCATCTGAATTTT
TCCATGTTGGAATCCCCTGCATTACACTGTCAGCCATCTACATCCTCGGCATTCCAATTGGCAGTTGCG
GGATTTTCCCTTGTAAGGAAATTAAGATTCTACCTCTCAGCATGATGATGATAACATCTCAACTACC
AGTGGTTTTTCTTCAAGAGCTTCTGATAAAGATATAACTGTTTCAAAGAACAATTCATTGCCACCTCTG
TGGTCCCAGAAAGCTGAACGTTCTCACTCACTCTCACAGCACACTGCCACCAGCTCAAAAAACCAGCA
TTCAACTTGTCTGCCTTTGGAACACTTTCCCTTCACTTGGGAATTTTCAATCCTTAAACCAGTCAG
CTTGGAGATTCTCCTTTTATCCTGAAAAACAACATACGGTGGGCAGCAGCTGCTGTAAGACAGTCT
AACTACGAAATACACCTTATCAGGCACCAGTTAGAAGACAAATGAAAGCTAAGCAACTCAGTGCACAA
TCTTACGGTGTGACCAGTTCAACAGCTCGGCGAATATTGCAGTCTTAGAGAAGATGCAAGCCCTTTA
CGGGATGCAAAAAGAATTCATCCATTGTTTCTTCTCCTCTGAATTCTCCTCTTGATAGGAGTGGGATA
GATATCACAGATTTTTCAGGCCAAAAGAGAAAAGTGGATTCTCAATATCCTCCTGTTTCAGAGACTTATG
ACCCCAAAGCCAGTTTCCATAGCAACAAATCGAAGTGTTTATTTTAAACCATCTCTGACTCCTTCTGGT
GAATTCAGGAAGACTAATCAAAGAATAGATAACAAGTGCAGTACTGGATATGAAAAAATATGACACCC
GGACAAAATAGAGAACAACGAGAAAGTGGCTTTTCATATCCAAATTTTCAGTTGCCTGCAGCCAATGGT
TTATCTTCTGGAGTAGGTGGTGGAGGTGGCAAGATGAGACGAGAAAGAACACGCTTTGTTGCTTCTAAA
CCTCTGGAGGAGGAGAGACAAGTCTCACCGTATTGCCAAGCTGATCTCGAGCTCCTGCGCTCAAGCG
ATCATCCCATCTTGGCCTCTCAAAGTGTGAGATTACAGGAAATGGAAGTCCAGTATTACCGAAAATC
```



[View online »](#)

TCTCTACCGATCACCAGTCTTCTACTGCCTACCTTTAATTTTAGTTCCCCTGAGATCACAACCTCCTCT  
CCATCACCATCAATTCGTCTCAAGCATTAACAAACAAGGTACAATGACCTCTCCGAGCAGCACTGGC  
AGTCCCATGTTTAAATTTTCATCTCCAATCGTAAATCTACTGAGGCAATGTACTACCTCCATCATCT  
ATTGGATTTACATTTAGTGTGCCTGTTGCAAAAACAGCAGAACCTTCTGGTTCTAGTAGTACTTTAGAA  
CCAATTAAGTAGTTCAGCTCATCATGCTACTACAGTGAACAGTACAAATTGTAAGAAGACACCACCT  
GAAGATTGTGAGGGTCTTTTAGACCTGCAGAAATCCTGAAAGAAGGAAGTGTCTAGATATTCTGAAA  
AGCCCTGGTTTCGCATCGCCGAAGATAGATTCTGTTGCTGCTCAGCCCACCGCAACAAGCCCACTAGTT  
TATAACAAGACCAGCAATAAGTAGCTTTTCTTCTAGTGGAATTGGGTTTGGGGAGAGTTTTAAAGCTGGG  
TCATCATGGCAGTGTGATACATGTCTACTCCAGAACAAGTTACAGACAACAATGCATAGCCTGTCAA  
GCAGCAAAATTGTCACCCAGAGATACTGCTAAACAGACTGGAATTGAAACACCAATAAAAGTGGCAAA  
ACAACCTTTTCTGCATCAGGGACAGGCTTTGGAGACAAATTTAAACCAGTGATAGGCACTTGGGATTGT  
GATACCTGTTTAGTGCAAAATAAACCTGAAGCAATAAAATGTGTAGCCTGTGAAACACCGAAACCTGGA  
ACTTGTGTGAAGCGAGCCCTTACATTGACAGTGGTTTCGAAAGTGTGAGACTATGACTGCTTCATCT  
TCCAGCTGCAGTGAACCACTGGTACCTTAGGATTTGGAGATAAATTCAAAAGGCCCACTGGATCTTGG  
GAGTGTTCAGTATGCTGTGTTTCTAATAATGCAGAAGACAATAAGTGTGTGCTCTGTATGTCTGAGAAA  
CCAGGAAGTTCAGTACCTGCTTCAAGTAGCAGCACTGTACCTGTCTCTGCCTTCTGGAGGCTCTCTA  
GGATTGAAAAAGTTCAAGAAACCCGAGGGAAGCTGGGACTGTGAATTGTGCCCTAGTGCAGAAATAAGCA  
GACTCTACCAATGTTTGGCATGTGAAAGTCAAAGCCAGGCACAAAATCTGGGTTTAAAGGCTTTGAC  
ACATCTTCCTCATCTTCGAACTCAGCAGCTCCTCATCCTCAAATTTGGTGTCTCATCCTCTTCT  
GGGCTTCTCAGACTTTAAACAAGCACTGGAATTTTAAATTTGGAGATCAGGGAGGATTCAAAATAGGT  
GTGTCAATCCGATTCTGGGTCTATAAACCCCATGAGTGAAGGCTTTAAATTTCTAAACCAATAGGAGAT  
TTTAAATTTGGAGTTTCATCTGAATCTAAGCCCAAGAAAGTAAAAAAGATAGTAAGAATGATAATTTT  
AAGTTTGGACTTCTTCTGGTTTAAAGCAACCCAGTTTCTTTAACTCCATTTCAATTTGGGTATCTAAT  
CTTGGACAGGAAGAAAAGAAAGAGGAACCTGCCAAATCTTCTCTGCAGTTTTAGCTTTGGTACAGGT  
GTTATTAACCTCCACCCTGCTCCTGCTAACACCATAGTGACCTCTGAGAACAAGAGCAGCTTCAACCTT  
GGAACCATAGAAACCAAGAGTGTCTCAGTGGCTCCTTTCACATGTAAGACATCAGAAGCTAAAAAAGAA  
GAAATGCCTGCCACCAAGGAGGATTCTCTTTGGCAACGTGGAGCCTGCCTCTCTGCCATCTGCCTCA  
GTGTTTGTGTTTGGGAAGGACAGAAGAGAAAACAGCAAGAGCCTGTCACTTCTACTTCCCTAGTTTTTGGG  
AAGAAAGCTGACAATGAAGAGCCAAAGTGTCAACCAGTGTTCCTTTGGGAATTCAGAGCAACCAAAA  
GATGAGAATCTTCAAAGTCCACATTTAGTTTTAGTATGACAAAACCATCTGAGAAGGAATCTGAACAG  
CCAGCAAAAGCCACTTTTGCCTTTGGAGCTCAAACCTAGTACTACAGCTGATCAAGGTGCAGCAAAGCCA  
GTTTTTAGTTTTCTGAACAACAGTTCCTCTAGTTCAAGTACACCAGCCACTTCTGCTGGTGGTGGCATA  
TTTGGTAGTTCCACCTCTTCTCCAATCCACCTGTGGCTACCTTTGTGTTTGGACAGTCCAGCAATCCT  
GTGAGCAGCTCTGCCTTTGGTAACACTGCTGAATCCAGCACCTCTCAGTCTTTGCTATTTTCTCAAGAT  
AGCAAACTAGCAACCACATCCAGCACAGGTACAGCTGTCACCCCAATTTGCTTTGGTCCAGGAGCCAGC  
AGTAATAATACTACCACCTCTGGTTTCGGCTTTGGAGCCACAACCACATCTAGCTCTGCAGGATCCTCC  
TTTGTATTTGGAAGTGGACCCTCAGCACCATCTGCCAGTCCAGCATTTGGTGTAACCAGACCCCAACA  
TTTGGACAAAAGTCAAGGTGCCAGCCAGCCCAATCCCCAGGCTTTGGATCTATATCATCTCCACAGCA  
TTATTTCCCACTGGTTCTCAGCCTGCACCACCTACTTTTGGACAGTGTCAAGCAGTACCAGCCCTCT  
GTGTTTGGACAGCAACCTAGTCACTGCTGATTTGGCTCTGGAACAACCTCTAATTTAGTTTCGGCTTTC  
CAGTTTGGCAGCAGCACTACAAATTTCAACTTCAAAAACAACAGTCCATCAGGAGTGTTCACATTTGGT  
GCAAAATCTAGCACACCTGCAGCCTCAGCCAGCCTTTCAGGCTCGGGGGGCTTTCCATTTAACAGTCT  
CCAGCAGCATTTACAGTGGGTCAAATGGGAAAAATGTGTTCTTCTTCTTGGAACTTCATTCTCTGGT  
CGCAAGATAAAGACTGCTGTTAGACGCAGGAAA

ACGCGTACGCGGCCGCTCGAG - GFP Tag - GTTTAAAC

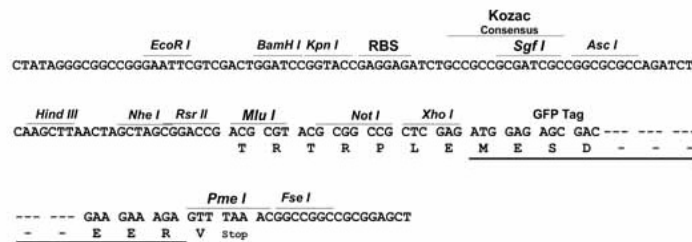
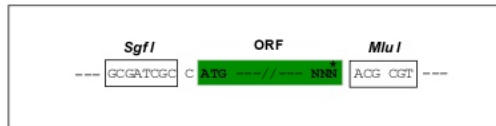
Protein Sequence: >Peptide sequence encoded by RG240167  
 Blue=ORF Red=Cloning site Green=Tag(s)

MASGAGGVGGGGGGKIRTRRCHQGPICKPYQQGRQQHQGILSRVTESVKNIVPGWLQRYFNKEDVCSCS  
 TDTSEVPRWPKEDHLVYADEESSNITDGRITPEPAVSNTTEPSTTSTASNYPDVLRPSLHRSHLNF  
 SMLESPALHCQPSTSSAFPIGSSGFLVKEIKDSTSQHDDNISTTSGFSSRASDKDITVSKNTSLPPL  
 WSPAEARSHLSQHTATSSKKPAFNL SAFGTLSPSLGNSSILKTSQLGDSFPFYPGKTTYGGAAAVRQS  
 KLRNTPYQAPVRRQMKAKQLSAQSYGVTSSARRILQSLEKMSSPLADAKRIPSI VSSPLNSPLDRSGI  
 DITDFQAKREKVD SQYPPVQRLMTPKPVSIATNRSVYFKPSLTPSGEFRKTNQRIDNKCSTGYEKNMTP  
 GQNREQRESGFSYPNFSLPAANGLSSGVGGGGKMRERTRFVASKPLEEERQGLTVLPKLISSSCAQA  
 IIPSWPLKVLRLQEMEVPLPKISLPIITSSSLPTFNFSSPEITTSPPSPINSSQALTNKVQMTSPSSTG  
 SPMFKFSSPIVKSTEANVLPSSIGFTFSVPVAKTAE LSGSSSTLEPIISSSAHHVTTVNSTNCKKTPP  
 EDCEGFRPAEILKEGSVLDILKSPGFASPKIDSVAQAQPTATSPVYTRPAISSFSSSGIGFGESLKAG  
 SSWQCDTCLLQNKVTDNKCIAQAAKLSPRDTAKQTGIEIPNKSGKTLLSASGTGFGDKFKRPIGWDC  
 DTCLVQNKPEAIKCVACETPKPGTCVKRALTLTVVSESAETMTASSSSCTVTTGTLGFGDKFKRPIGSW  
 ECSVCCVSNNAEDNKCVCSCMSEKPGSSVPASSSSTVPVSLPSGGSLGLEKFKKPEGSWDCELCLVQNK  
 DSTKCLACESAKPGTKSGFKGFDTSSSSSNSAASSSFKFGVSSSSSGPSQTLTSTGNFKGDQGGFKIG  
 VSSDSGSINPMSEGKFKSKPIGDFKFGVSSSEKPEEVKKDSKDNDFKGLSSGLSNPVSLTPFQFVSN  
 LGQEEKKEELPKSSSAGFSFGTGVINSTPAPANTIVTSENKSSFNLGTIETKSASVAPFTCKTSEAKKE  
 EMPATKGGFSFGNVEPASLPSASVFLGRTEEKQEQEPTSTSLVFGKKADNEEPKCQPVFSGNSEQTK  
 DENSSKSTFSFMTKPEKESEQPAKATFAFGAQTSTTADQGAAPVFSFLNNSSSSSSTPAT SAGGGI  
 FGSSTSSSNPPVATFVFGQSSNPVSSAFGNTAESSTSQLLFSQDSKLATTSSTGTAVTPFVFGPGAS  
 SNNTTSSGFGGATTTSSSAGSSFVGTGPSAPSASPAFGANQPTTFGQSQGASQPNPPGFGISSSTA  
 LFPTGSQPAPPTFGTVSSSSQPPVFGQQPSQSAFGSGTTPNSSSAFQFGSSTTNFTNNSPSGVFTFG  
 ANSSTPAASAQPSGGGFPFNQSPAFTVGSNGKNVFSSTGTSFSGRKIKTAVRRRK  
 TRTRPLEMESDEGLPAMEIECRITGTLNGVEFELVGGEGTPEQGRMTNKMSTKGALTFSPYLLSHV  
 MGYGFYHFGTYPYSGYENPFLHAINNGGYNTRIEKYEDGGVLHVSFSYRYEAGRVIGDFKVMGTGFPED  
 SVIFTDKIIRSNATVEHLHPMGDNDLDGSFTRTFSLRDGGYSSVVD SHMHFKSAIHPSILQNGGPMFA  
 FRRVEEDHSNTELGIVEYQHAFKTPDADAGEERV

Restriction Sites: Sgfl-MluI

Cloning Scheme:

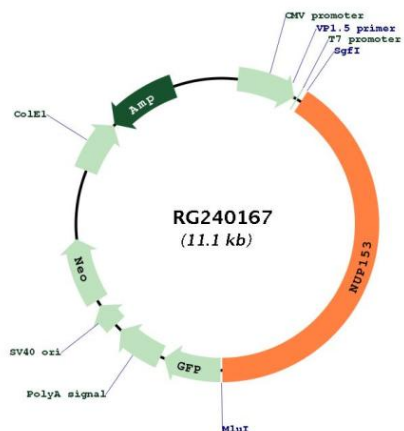
Cloning sites used for ORF Shutting:



ACCN: NM\_001278209

<b>ORF Size:</b>	4518 bp
<b>OTI Disclaimer:</b>	The molecular sequence of this clone aligns with the gene accession number as a point of reference only. However, individual transcript sequences of the same gene can differ through naturally occurring variations (e.g. polymorphisms), each with its own valid existence. This clone is substantially in agreement with the reference, but a complete review of all prevailing variants is recommended prior to use. <a href="#">More info</a>
<b>OTI Annotation:</b>	This clone was engineered to express the complete ORF with an expression tag. Expression varies depending on the nature of the gene.
<b>Components:</b>	The ORF clone is ion-exchange column purified and shipped in a 2D barcoded Matrix tube containing 10ug of transfection-ready, dried plasmid DNA (reconstitute with 100 ul of water).
<b>RefSeq:</b>	<a href="#">NM_001278209.1</a> , <a href="#">NP_001265138.1</a>
<b>RefSeq Size:</b>	6030 bp
<b>RefSeq ORF:</b>	4521 bp
<b>Locus ID:</b>	9972
<b>UniProt ID:</b>	<a href="#">P49790</a>
<b>Cytogenetics:</b>	6p22.3
<b>Protein Families:</b>	Druggable Genome, Stem cell - Pluripotency
<b>MW:</b>	157.8 kDa
<b>Gene Summary:</b>	Nuclear pore complexes regulate the transport of macromolecules between the nucleus and cytoplasm. They are composed of at least 100 different polypeptide subunits, many of which belong to the nucleoporin family. Nucleoporins are glycoproteins found in nuclear pores and contain characteristic pentapeptide XFXFG repeats as well as O-linked N-acetylglucosamine residues oriented towards the cytoplasm. The protein encoded by this gene has three distinct domains: a N-terminal region containing a pore targeting and an RNA-binding domain domain, a central region containing multiple zinc finger motifs, and a C-terminal region containing multiple XFXFG repeats. Alternative splicing results in multiple transcript variants of this gene. [provided by RefSeq, May 2013]

Product images:



Circular map for RG240167