

## Product datasheet for **RG240152**

### KDM6A (NM\_001291415) Human Tagged ORF Clone

#### Product data:

Product Type:	Expression Plasmids
Product Name:	KDM6A (NM_001291415) Human Tagged ORF Clone
Tag:	TurboGFP
Symbol:	KDM6A
Synonyms:	bA386N14.2; KABUK2; UTX
Mammalian Cell Selection:	Neomycin
Vector:	pCMV6-AC-GFP (PS100010)
E. coli Selection:	Ampicillin (100 ug/mL)
ORF Nucleotide Sequence:	>RG240152 representing NM_001291415. Blue=ORF Red=Cloning site Green=Tag(s)

```
GCTCGTTTGTGAAACCGTCAGAATTTGTAAACGACTCACTATAGGGCGCCGGGAATTCGTCGACTG
GATCCGGTACCGAGGAGATCTGCCGCCGCGATCGCC
ATGAAATCCTGCGGAGTGTGCTCGCTACCGCCGCGCTGCCGCCGCGCTTTCGGTGATGAGGAAAAG
AAAATGGCGGGGAAAAGCGAGCGGCGAGAGCGAGGAGGCGTCCCCAGCCTGACAGCCGAGGAGAGG
GAGGCGCTCGGCGGACTGGACAGCCGCCTTTGGGTTCTGTGAGATTTTCATGAAGATGGCGCCAGGACG
AAGGCCCTACTGGCAAGGCTGTTGCTGCTATGAATCTCTAATCTTAAAAGCTGAAGGAAAAGTGGAG
TCTGATTTCTTTGTCAATTAGGTCACCTCTTATTGGAAGATTATCCAAAAGCATTATCTGCA
TACCAGAGGTAACAGTTTACAGTCTGACTACTGGAAGAATGCTGCCTTTTATATGGTCTTGGTTTG
GTCTACTTCCATTATAATGCATTTCAAGTGGCAATTAAGCATTTCAGGAGGTGCTTTATGTTGATCCC
AGCTTTTGTGCGCAAGGAAATTCATTTACGACTTGGGCTTATGTTCAAAGTGAACACAGACTATGAG
TCTAGTTTAAAGCATTTCAGTTAGCTTGGTTGACTGTAATCCCTGCATTTGTCCAATGCTGAAATT
CAATTTACATTGCCACTTATATGAAACCCAGAGGAAATATCATTCTGCAAAAGAAGCTTATGAACAA
CTTTTGCAGACAGAGAATCTTTCTGCACAAGTAAAAGCAACTGTCTTACAACAGTTAGGTTGGATGCAT
CACACTGTAGATCTCCTGGGAGATAAAGCCACCAAGGAAAGCTATGCTATTCAGTATCTCCAAAAGTCC
TTGGAAGCAGATCCTAATCTGGCCAGTCTGGTATTTCTCGGAAGGTGCTATTCAGTATTGGGAAA
GTTGAGGATGCCTTTATATCTTACAGGCACTATTGATAAATCAGAAGCAAGTGCAGATACATGGTGT
TCAATAGGTGTGCTATATCAGCAGCAAAATCAGCCCATGGATGCTTTACAGGCCTATATTTGTGCTGTA
CAATTGGACCATGGCCATGCTGCAGCCTGGATGGACCTAGGCACTCTCTATGAATCCTGCAACCAGCCT
CAGGATGCCATTAATGCTACTTAAATGCAACTAGAAGCAAAAGTTGTAGTAATACCTCTGCACTTGCA
GCACGAATTAAGTATTTACAGGCTCAGTTGTGTAACCTTCCACAAGTAGTCTACAGAATAAAACTAAA
TTACTTCTAGTATTGAGGAGCGTGGAGCCTACCAATCCCAGCAGGCTTACCTCCAGGAGGGTGGCC
ATGAACACAGCACAGCAGGCATGTAACCTCATCATCAAATACTGAACCTGTATTAGGCCTCAGTCAA
ACACCAATTTACAGCAATCCTTGCCACTACACATGATTCCTTCTAGCCAAGTAGATGACCTGTCCAGT
CCTGCCAAGGAAAAGAACATCTAGTCCAACAAGAATACTTCTGACAATTGGAGTGGTGGACATGCT
```



[View online >](#)

GTGTCACATCCTCCAGTACAGCAACAAGCTCATTGTTGTTGACACCCAGAAATTACAGCATTG  
 GAACAGCTCCGCGCAAATAGAAATAATTTAAATCCAGCACAGAACTGATGCTGGAACAGCTGGAAGT  
 CAGTTTGTCTTAATGCAACAACACCAAATGAGACCAACAGGAGTTGCACAGGTACGATCTACTGGAATT  
 CCTAATGGGCCAACAGCTGACTCATCTGCCTACAACTCAGTCTCTGGCCAGCAGCCACAGCTTGCT  
 CTGACCAGAGTGCCTAGCGTCTCTCAGCCTGGAGTCCGTCCTGCCTGCCCTGGGCAGCCTTTGGCCAAT  
 GGACCTTTTCTGCAGGCCATGTTCCCTGTAGCACATCAAGAACGCTGGGAAGTACAGACACTATTTTG  
 ATAGGCAATAATCATATAACAGGAAGTGAAGTAAATGGAACGTCGCTTACCTGCAGCGAAACGCACTC  
 ACTCTACCTCATAACCGCACAAACCTGACCAGCAGCGCAGAGGAGCCGTGGAAAAACCAACTATCTAAC  
 TCCACTCAGGGGCTTACAAAAGGTCAGAGTTCACATTTCGCGAGGTCCTAATGGTGAACGACCTCTCTCT  
 TCCACTGGGCTTCCCAGCATCTCCAGGAGCTGGCTCTGGTATTGAGAAACAGAACGGACATCCCACC  
 CTGCTAGCAATTCAGTAACACAGGGGCTGCTCTCAATCACCTCTCTCTCACACTGCTACCTCAGGT  
 GGACAACAAGGCATTACCTTAACCAAAGAGAGCAAGCCTTCAGGAAACATATTGACGGTGCCTGAAACA  
 AGCAGGCACACTGGAGAGACACCTAACAGCACTGCCAGTGTGAGGGACTTCTAATCATGTCCATCAG  
 ATGACGGCAGATGCTGTTTGCAGTCTAGCCATGGAGATTCTAAGTCACCAGGTTTACTAAGTTCAGAC  
 AATCCTCAGTCTCTGCCTTGTGATGGGAAAAGCCAATAACAATGTGGGTACTGGAACCTGTGACAAA  
 GTCAATAACATCCACCCAGCTGTTTCATACAAAGACTGATAACTCTGTTGCCTCTTACCATTCTCAGCC  
 ATTTCAACAGCAACACCTTCTCCAAAATCCACTGAGCAGACAACCACAAACAGTGTACCAGCCTAAC  
 AGCCCTCACAGTGGGCTACACACAATTAATGGAGAAGGGATGGAAGAATCTCAGAGCCCCATGAAAAA  
 GATCTGCTTCTGGTTAACCAAAACCTAGTCCACAGATCATACCATCAATGTCTGTGTCCATATACCCC  
 AGCTCAGCAGAAGTTCTGAAGGCATGCAGGAATCTAGGTAATAATGGCTTATCTAACAGTAGCATTG  
 TTGGATAAATGTCCACCTCCAAGACCACCTCTCACCATACCCTCCCTTGCCAAAGGACAAGTTGAAT  
 CCACCTACACCTAGTATTTACTTGGAAAATAAACGTGATGCTTTCTTCTCCATTACATCAATTTTGT  
 ACAAAATCCGAACAACCTGTTACAGTAATACGTGGCCTTGCTGGAGCTCTTAAGTTAGACCTGGGACTT  
 TTCTCTACTAAAACCTTTGGTGGAAAGCTAACAAATGAACATATGGTGAAGTGAAGCACAGTTGTTGCAG  
 CCAGCAGATGAAAACCTGGGATCCCACTGGAACAAAGAAAATCTGGCATTGTGAAAGTAATAGATCTCAT  
 ACTACAATTGCTAAATATGCACAGTACCAGGCCTCCTCATTCCAGGAATCATTGAGAGAAGAAAATGAA  
 AAAAGAAGTATCATAAAGACCACTCAGATAGTGAATCTACATCGTCAGATAATTCTGGGAGGAGGAGG  
 AAAGGACCCTTTAAAACCATAAAGTTGGGACCAATATTGACCTATCTGATGACAAAAAGTGAAGTTG  
 CAGCTACATGAGCTGACTAAACTTCTGCTTTTGTGCGTGTGATCAGCAGGAAATCTTCTAAGCCAT  
 GTTGGTCATACCATATTGGGCATGAACACAGTTCAACTATACATGAAAGTCCAGGGAGCAGAACACCA  
 GGTTCATCAGGAAAATAACAACCTTCTGTTTCAGTTAACATAAATATTGGCCAGGTGACTGTGAATGGTTT  
 GTTGTTCCTGAAGTTACTGGGGTGTCTGAATGACTTCTGTGAAAAAATAATTTGAATTCCTAATG  
 GTTTCTTGGTGGCCCAATCTTGAAGATCTTATGAAGCAATGTTCCAGTGTATAGGTTTATTACAGCGA  
 CCTGGAGATTTGGTCTGGATAAATGCAGGCACTGTTTCATTGGGTTGAGGCTATTGGCTGGTGAACAAC  
 ATGCTTGGAAATGTTGGTCCACTTACAGCCTGCCAGTATAAATGGCAGTGAACGGTACGAATGGAAC  
 AAATTGCAAAAGTGAAGTCAATAGTACCCATGGTTTCATCTTCTGGAATATGGCAGCAAAATATCAAG  
 GTCTCAGATCCAAAGCTTTTGAATGATTAAGTATTGTCTTCTAAGAACTCTGAAGCAATGTGAGACA  
 TTGAGGGAAGCTCTCATTGCTGCAGGAAAAGAGATTATGGCATGGGCGGACAAAAGAAGAACCCAGCT  
 CATTACTGTAGCATTGGAAGTGGAGGTTTTTGTGCTGCTTTTGTGCTACTAATGAGAGTAATTCACGA  
 AAGACCTACATAGTACATTGCCAAGATTGTGCAGGAAAAACAAGCGGAACTTGGAAAACTTTGTGGTG  
 CTAGAACAGTACAAAATGGAGGACCTGATGCAAGTCTATGACCAATTTACATTAGCTCTCCATTACCA  
 TCCGCTCATCT

ACGCGTACGCGGCCGCTCGAG – GFP Tag – GTTTAAAC

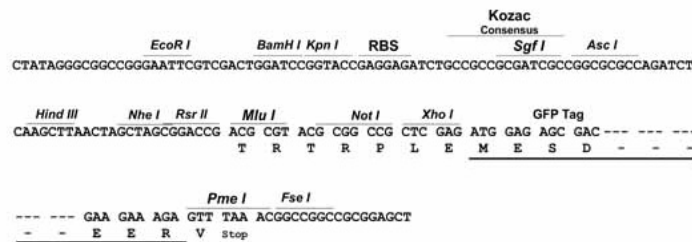
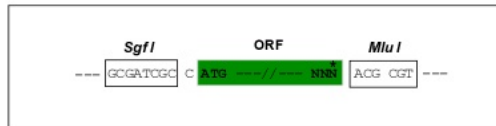
**Protein Sequence:** >Peptide sequence encoded by RG240152  
 Blue=ORF Red=Cloning site Green=Tag(s)

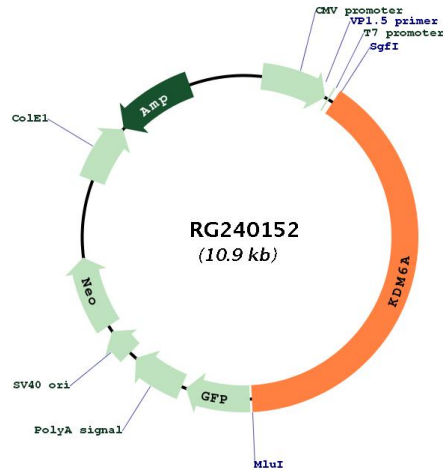
MKSCGVS LATAAAAA AFGDEEKKMAAGKASGESEEA SPSLTA EEREALGGLDSRLFGFVRFHEDGART  
 KALLGKAVRCY ESLILKAEGKVESDFFCQLGHFNLLLEDYPKAL SAYQRYSLQSDYWKNA AFLYGLGL  
 VYFHYN AFQWAIKAFQEVLYVDP SFCRAKEIHLRLGLMFKVNTDYESSLKHFQLALVDCNPCTLSNAEI  
 QFHIAHL YETQRKYHSAKEAYEQLLQ TENLSAQVKATVLQQLGWMHHTVDLLGDKATKESYAIQYLQKS  
 LEADPNSGQSWYFLGR CYSSIGKVQDAFISYRQSIDKSEASADTWCSIGVLYQQNQPM DALQAYICAV  
 QLDHGHAAAWMDLGTLYESC NQPQDAIKCYLNATRSKSCSNTSALAARIKYLQAQLCNLPQGS LQNKTK  
 LLPSIEEAWSLPIPAELTSRQGMANTAQQACKPHHPNTEPVLGLSQTPI SQSLPLHMIPSSQVDDLSS  
 PAKRKRTSSPTKNTSDNWSGGH AVSHPPVQQQAHSWCLTPQKLQHLEQLRANRN LNPAQKLMLEQLES  
 QFVLMQQHQMRPTGVAQVRSTGIPNGPTADSSLPTNSVSGQQPQLALTRVPSVSQPGV RPACPGQPLAN  
 GPF SAGHVPCST SRTL GSTDTILIGNNHITGSGSNGNVPYLQRNALTLPHNRTNL TSSAE EPWKNQLSN  
 STQGLHKQSSHSAGP NGERPLSSTGPSOHLQAAGSGIQNQNGHPTLPSNSVTQGAALNHLSSHTATSG  
 GQQGITLTKESKPSGNILVTPETSRHTGETPNSTASVEGLPNHVHQM TADAVCS PSHGDSKSPGLLSSD  
 NPQLSALLMGKANNVGTGTC DKVNNIHPAVHTKTDNSVASSPSSAISTATPSPKSTEQT TNSVTSLN  
 SPHSGLHTINGEGMEESQSPMKD LLLVNHKPSQIIPSMSVSIYPSSAEVLKACRNLGKNGLSNSSIL  
 LDKCPPRPPSPYPPLPKDKLN PTPSIYLENKRD AFFPPLHQFCTNPNPVTVIRGLAGALKDLGL  
 FSTKTLVEANNEHMEV RTQLLQPADENWDPTGTKKIWHCESNRSHTTIAKYAQYQASSFQESLREENE  
 KRSHHKDHSDESTSSD NSGRRRKGFPTIKFGTNI DLSDDKKWKLQLHELTKLPAFVRVVSAGNLLSH  
 VGHTILGMNTVQLYMKVPGSRTPGHQENNFCSVNI NIGPGDCEWFV VPEGYWGLNDFCEKNNL NFLM  
 GSWWP NLEDLYEANVPVYRFIQRP GDLVWINAGTVHWVQAIGWCN NIAWNVGPLTACQYKLAVER YEW  
 NKLQSVKSI VPMVHL SWNMARNIKVSDPKLFEMIKYCLLRTLKQCQTLREALIAAGKEI IWHGRTKEEPA  
 HYCSICEVEVFDLLFVTNESNRKTYIVHCQDCARKTSGNLENFV VLEEQYKMEDLMQVYDQFTLAPPLP  
 SASS  
 TRTRPLEMESDESGLPAMEIECRITGTLNGVEFELVGGGEGTPEQGRMTNKMSTKGALTFSPYLLSHV  
 MGYGFYHFGTYP SGYENPFLHAINNGGYNTRIEKYEDGGVLHVSFSYRYEAGRVIGDFKVMGTGFPED  
 SVIFTDKIIRSNATVEHLHPMGDNDLDGSFTRTFSLRDGGYSSVVD SHMHFKSAIHPSILQNGGPMFA  
 FRRVEEDHSNTELGIVEYQHAFKTPDADAGEERV

**Restriction Sites:** SgfI-MluI

**Cloning Scheme:**

Cloning sites used for ORF Shutting:



**Plasmid Map:**


**ACCN:** NM\_001291415

**ORF Size:** 4359 bp

**OTI Disclaimer:** The molecular sequence of this clone aligns with the gene accession number as a point of reference only. However, individual transcript sequences of the same gene can differ through naturally occurring variations (e.g. polymorphisms), each with its own valid existence. This clone is substantially in agreement with the reference, but a complete review of all prevailing variants is recommended prior to use. [More info](#)

**OTI Annotation:** This clone was engineered to express the complete ORF with an expression tag. Expression varies depending on the nature of the gene.

**Components:** The ORF clone is ion-exchange column purified and shipped in a 2D barcoded Matrix tube containing 10ug of transfection-ready, dried plasmid DNA (reconstitute with 100 ul of water).

**RefSeq:** [NM\\_001291415.2](#)

**RefSeq Size:** 5941 bp

**RefSeq ORF:** 4362 bp

**Locus ID:** 7403

**Cytogenetics:** Xp11.3

**MW:** 160.2 kDa

**Gene Summary:** This gene is located on the X chromosome and is the corresponding locus to a Y-linked gene which encodes a tetratricopeptide repeat (TPR) protein. The encoded protein of this gene contains a JmjC-domain and catalyzes the demethylation of tri/dimethylated histone H3. Multiple alternatively spliced transcript variants have been found for this gene. [provided by RefSeq, Apr 2014]