

## Product datasheet for **RG240147**

### LARG (ARHGEF12) (NM\_001301084) Human Tagged ORF Clone

#### Product data:

Product Type:	Expression Plasmids
Product Name:	LARG (ARHGEF12) (NM_001301084) Human Tagged ORF Clone
Tag:	TurboGFP
Symbol:	ARHGEF12
Synonyms:	LARG; PRO2792
Mammalian Cell Selection:	Neomycin
Vector:	pCMV6-AC-GFP (PS100010)
E. coli Selection:	Ampicillin (100 ug/mL)
ORF Nucleotide Sequence:	>RG240147 representing NM_001301084. Blue=ORF Red=Cloning site Green=Tag(s)

```
GCTCGTTTGTAGTGAACCGTCAGAATTTTGTAAACGACTCACTATAGGGCGCCGGGAATTCGTGACTG
GATCCGGTACCGAGGAGATCTGCCGCCGCGATCGCC
ATGCGGGCTGGAGTACAGACAGGTGATCGAATCATCAAGGTGAATGGAACCTGGTGACTCATTCAAAT
CATCTGGAGGTGGTGAAGCTAATCAAATCTGGTTCCTATGTAGCTCTCACTGTTCCAGGGACGCCACCT
GGGTCGCCCCAGATTCCACTTGCCGACTCTGAAGTAGAGCCGTCAGTCATTGGACATATGTCTCCCATC
ATGACATCTCCTCATTACCTGGAGCATCTGGGAATATGGAGAGAATCACTAGTCCTGTGCTCATGGGG
GAGGAAAAACAATGTGTTTATAACAGAAAGTAGAAATTTCTGAGAAAAATGTTACAGAAAGAACAGGAA
CGGCTACAGTTATTGCAGGAAGATTACAACCGAACACCTGCCCAAAGATTGCTAAAAGAGATCCAAGAG
GCCAAGAAACACATTCTCAGCTGCAAGAGCAGTTATCCAAGCCACAGGCTCTGCTCAGGATGGAGCT
GTAGTTACACCCTCCAGACCTTTAGGGGACACCCTAACAGTCAGTGAGGCAGAAACAGATCCTGGAGAT
GTACTGGGCAGGACTGACTGTAGCAGTGGAGATGCTTCTCGGCCAGTAGTGACAATGCAGATAGTCCC
AAGAGTGGCCCAAAGAGAGAAATTTATCTAGAGGAAAACCCAGAGAAAAGTGAACAATTCAGGACACT
GACACTCAATCACTTGTGCGAAGTCCCTCAACCCGATAGCACCTCATATTATTGGAGCAGAAGATGAT
GATTTTGGTACTGAACATGAACAGATCAATGGACAGTGCAGCTGTTTCCAGAGCATTGAATTAATAAAA
TCTCGCCCGGCTCATTTGGCTGTTTTCTTACACCATGTAGTTTCACAATTTGACCCTGCGACTTTGCTC
TGTTATCTCTATTAGACCTGTATAAACATACCAATTCCAAAGAAACTCGTCGCATCTTCTTTGAGTTT
CATCAGTTCTTTCTAGATCGATCAGCACACCTGAAAGTTTCTGTTCTGATGAAATGTCTGCAGATCTA
GAAAAGAGAAGACCTGAGCTCATTCTGAGGATCTGCATCGCCACTATATCCAAACTATGCAAGAAAGA
GTCCATCCAGAAGTTCAAAGGCACCTTAGAAGATTTTCGGCAGAAACGTAGTATGGGACTGACCTTGCT
GAAAGCGAGCTGACTAACTTGTGAGAGCGAGACAAGGACCGATTGACTTTGGAGAAGGAGCGGACA
TGTGCAGAACAGATTGTTGCCAAAATTGAAGAAGTATTGATGACTGCTCAGGCTGTAGAGGAAGATAAG
AGCTCCACCATGCAGTATGTTATTCTCATGTATATGAAGCATTTGGGAGTAAAAGTGAAGAGCCTCGA
AATTTGGAGCACAAACGGGGTCGGATTGATTTCTTCCAAAATCAAGCAAAGTATGAAGAAAGATAAA
GAAGGGGAAGAAAAGGGGAGCGAAGAGGATTCGCCAGCATCCTGGGACCCACCGAGACCAAGCCGT
```



View online »

CATGACAACAGTGAATTGGCAGAGCCATGGAACACAGAAAGGCGGCCACCCTAAGCACTTATCCACA  
CCCTCATCTGTGAGTCTGAACCTCAGGACTCTGCCAAGTTGCGCCAGAGTGGGTTAGCAAATGAAGGA  
ACAGACGCTGGATACCTGCCTGCCAATTCATGTCTTCTGTAGCTTCAGGGGCCTCTTTTCCCAGGAA  
GGAGGGAAAGAGAATGATACAGGATCAAAGCAAGTTGGAGAAACATCAGCACCTGGAGACACCTTAGAT  
GGCACACCTCGTACTCTCAACTGTCTTTGATTTCCACCACCTCCATTAGACCAAGTGCAGGAGGAG  
GAATGTGAAGTAGAAAGGGTGAACATGGGACACCAAAGCCCTTCGAAAAGTTTGACAGTGTAGCT  
TTTGGAGAAAGTCAAAGTGAGGATGAACAATTTGAAAATGACTTAGAGACAGATCCACCACTGGCAG  
CAGCTTGTAGTCGAGAAGTGTTACTGGGACTAAAACCTTGTGAAATCAAAGACAGGAAGTGATTAAT  
GAATTGTTCTACACTGAAAGAGCTCATGTTGAAACACTGAAGTTCTTGATCAAGTGTCTATCAGCGA  
GTATCCAGAGAAGGAATTCTGTACCCTCAGAGCTACGAAAAATTTTTCAAACCTGGAAGATATTCTT  
CAACTTCATATTGGATTGAATGAACAAATGAAGGCTGTTGAAAGAGAAAATGAGACCTCTGTTATCGAT  
CAGATTGGGGAAGATTTGCTGACATGGTTCAGCGGACCAGGAGAGGAGAAAATGAAACATGCTGCTGCT  
ACCTTTTGCAGTAACCAACCTTTGCCCCTGAAATGATCAAATCTCGTCAGAAAAAGGATTCTCGATTT  
CAGACTTTTGTCAAGATGCTGAAAGTAACTCACTGTGTCGTCTTCAACTGAAGGATATTATCCC  
ACTCAAATGCAAAGGCTTACTAAGTACCCACTTCTGTTGGATAATATTGCCAAATACACAGAATGGCCA  
ACAGAAAAGGAGAAAGGTGAAGAAAGCTGCAGATCACTGTGTCGATCCTAAATTAATGTAATCAGGCT  
GTCAAGGAGGCAGAAAACAAGCAGCGCCTAGAAGATTATCAGCGTCGCCTTGATACCTCCAGCCTGAAG  
TTGTCAGAGTACCCAAATGTTGAAGAGCTCAGGAATTTGGATTTAACAAAAGGAAGATGATTCATGAA  
GGGCCATTGGTTTGAAGGTGAATAGAGATAAACTATTGATTTATACACGTTGCTGCTGGAAGACATT  
CTTGATTGTTACAAAAGCAGGATGATAGACTGGTTTTAAGGTGTCATAGTAAGATTCTGGCATCTACA  
GCTGATAGCAAACACACGTTTAGCCCTGTCATTAAGTTGAGTACAGTGTGGTTCGACAAGTGGCAACA  
GATAACAAAGCTTTATTCGTCAATTCATGTGAGACAATGGCGCTCAGATTTATGAACTGGTGGCACAG  
ACAGTTTCTGAAAAGACTGTCTGGCAGGACCTAATCTGTGCGATGGCTGCATCAGTGAAGGAGCAATCC  
ACAAAGCCAATTCATTACCACAGTCAACACCTGGCGAAGGAGATAATGATGAAGAAGATCCTTCAAAA  
TTAAAAGAGGAGCAGCATGGCATTTCAGTCACTGGTTTGCAGAGTCCAGACAGAGATTTGGGATTAGAA  
TCTACCTTAATATCGTCAAAACCTCAGTCTCATTCACTGAGTACCTCTGGGAAATCAGAGGTACGTGAT  
CTGTTTGTGGCTGAGAGACAGTTTGCAAAGGAACAACATACAGATGGGACACTAAAGGAAGTTGGAGAA  
GATTATCAAATCGCAATCCAGATTACACCTGCCTGTCTCAGAAGAACGGTGGGCATTGGATGCACTA  
AGAAATTTGGGTTTGTGAAGCAGTTGCTGGTGAACAGCTAGGTTTACTGAGAAGAGCGTTCCAGGAA  
GACTGGCAACATTTCCAAAGATACAGAACAGCCTCTCAGGGGCCGACAGACAGTGCATCCAGAAC  
TCTGAAAATATTAAGGCCTATCATTCTGGTGAAGGACATATGCCCTTTAGAACTGGAACCTGGTGACATT  
GCAACTTGTACAGTCCACGGACTTCAACTGAATCTTTTGTCCACGGGATTGAGTGGGACTGGCACCC  
CAGGATAGCCAGGCAAGTAACTTTTGTAAATGGACCACATGATTATGACCCAGAGATGCCTACCATG  
GAGCCAGAAGGGGCTTGTGACAGTGGAGAGCACTTTTTTGTGATGCCCGTGAAGCACATAGTGATGAG  
AATCCATCAGAAGGTGATGGAGCAGTTAACAAGGAAGAGAAGGATGTTAATTTACGCATCTCAGGAAAC  
TATTTGATCCTTGATGGCTATGACCCAGTGCAGGAGAGTTCACAGATGAGGAGGTTGCTTCTCACTT  
ACCCTGCAGCCATGACAGGCATCCCTGCTGTGGAATCCACCCACCAGCAGCAACATTCTCCTCAGAT  
ACTCACTCCGATGGGGCAATTTACCATTACCCCCGAATTTCTGGTCCAGCAGCGCTGGGGAGCTATG  
GAGTATTCCTGTTTTGAGATCCAGAGTCCCTCCTTGTGCAGATTACAGAGCCAGATCATGGAGTAC  
ATTCATAAGATAGAGGCTGACCTTGAACACTTAAGAAGGTGGAGGAAAGTTACACCATTCTTTGCCAA  
AGGCTGGCTGGATCAGCCCTCACAGACAAGCACTCAGATAAAAAGT  
ACGCGTACGCGGCCGCTCGAG - GFP Tag - GTTTAAAC

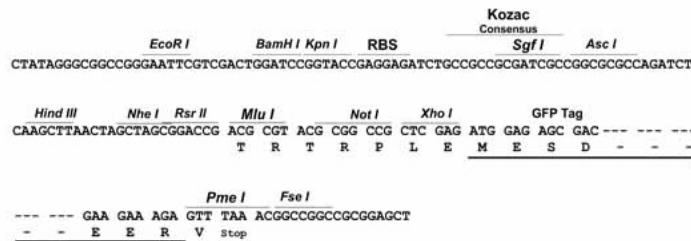
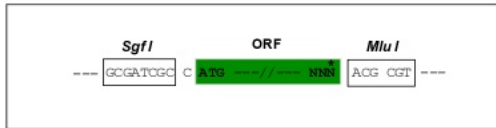
**Protein Sequence:** >Peptide sequence encoded by RG240147  
 Blue=ORF Red=Cloning site Green=Tag(s)

MRAGVQTGDRIIKVNGTLVTHSNHLEVVKLIKSGSYVALTVQGRPPGSPQIPLADSEVEPSVIGHMSPI  
 MTSPhSPGASGNMERITSPVLMGEENNVHNQKVEILRKMLQKEQERLQLQEDYNRTPAQRLLKEIQE  
 AKKHIPQLQEQLSKATGSAQDGA VVTPSRPLGDTLTVSEATDPGDVLRGTRDCSSGDASRPSSDNADSP  
 KSGPKERIYLEENPEKSETIQDQDTQSLVGPSTRIAPHII GAEDDDFGTEHEQINGQCSCFQSIELLK  
 SRPAHLAVFLHHVVSQFDPATLLCYLYSDLYKHTNSKETRRIFLEFHQFFLDRSAHLKVSVPDEMSADL  
 EKRRPELIPEDLHRHYIQTMQERVHPEVQRHLEDFRQKRSMGLTAESELTCLDAERDKDRLTLEKERT  
 CAEQIVAKIEEVLMTAQAVEEDKSSTMQYVILMYMKHLGVKVEPRNLEHKRGRIGFLPKIKQSMKKDK  
 EGEEKGKRRGFPSILGPPRRPSRHDNSAIGRAMELQKARHPKHLSTPSSVSPEPQDSAKLRQSGLANEG  
 TDAGYLPANSMSSVAGSASFQEGGKENDTGSKQVGETSAPGDTLDGTPRTLNTVDFPPPPLDQVQEE  
 ECEVERTTEHGTPKPKFRKFDVAFGESQSEDEQFENDLETPPNWQQLVSREVLGLKPCIEKRQEVIN  
 ELFYTERAHVRTLKVLDQVFYQVRSREGILSPSELRKIFSNLEDILQLHIGLNEQMKAVRKRNETSVID  
 QIGEDLLTWFSGPGEEKLKHAAATFCSNQPF ALEMIKSRQKDSRFQTFVQDAESNPLCRRLQLKDIIIP  
 TQMQRLLTKYPLLDNIAKYTEWPTEREKVKKAADHCRQILNYVNQAVKEAENKQRLQEDYQRRLDSSLK  
 LSEYPNVEELRNLDLTKRMIHEGPLVWKVNRDKTIDL YTLLEDILVLLQKQDDRLVLRCHSKILAST  
 ADSKHTFSPVIKLVLRQVATDNKALFVISMDSNGAQIYELVAQTVSEKTVWQDLICRMAASVKEQS  
 TKPIPLPQSTPGEGDNDEEDPSKLKEEQHGIVSGLQSPDRDLGLESTLISSKPQSHSLSTSGKSEVRD  
 LFVAERQFAKEQHTDGLTKEVGEDYQIAPDHLVSEERWALDALRNLGLLQQLVQQLGLTEKSVQE  
 DWQHFRYRTASQGPQTDVSIQNSENIKAYHSGEGHMPFRTGTGDIATCYSPTSTESFAPRDSVGLAP  
 QDSQASNILVMDHMIMTPEMPTMEPEGGLDSDGEHFFDAREAHSDENPSEGDAVNKEEKDYNLRI  
 YLILDGYDPVQESSTDEEVASSLTLQPMTGIPAVESTHQHQHSPQNTSDGAI SPFTPEFLVQQRWGAM  
 EYSCFEIQSPSSCADSQSQIMEYIHKIEADLEHLKKEVESYITILCQRLAGSALTDKHSKDS  
 TRTRPLEMESDESGLPAMEIECRITGTLNGVEFELVGGGEGTPEQGRMTNKMSTKGALTFSPYLLSHV  
 MGYGFYHFGTYPSTYENPFLHAINNGGYNTRIEKYEDGGVHVLSFSYRYEAGRVIGDFKVMGTGFPEP  
 SVIFTDKIIIRSNATVEHLHPMGDNDLDGSFTRTFSLRDGGYSSVVDSDHMFKSAIHPISILQNGGPMFA  
 FRRVEEDHSNTELGIVEYQHAFKTPDADAGEERV

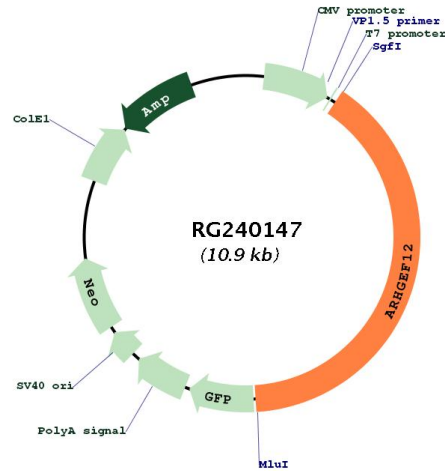
**Restriction Sites:** SgfI-MluI

**Cloning Scheme:**

Cloning sites used for ORF Shutting:



Plasmid Map:



ACCN: NM\_001301084

ORF Size: 4323 bp

OTI Disclaimer: The molecular sequence of this clone aligns with the gene accession number as a point of reference only. However, individual transcript sequences of the same gene can differ through naturally occurring variations (e.g. polymorphisms), each with its own valid existence. This clone is substantially in agreement with the reference, but a complete review of all prevailing variants is recommended prior to use. [More info](#)

OTI Annotation: This clone was engineered to express the complete ORF with an expression tag. Expression varies depending on the nature of the gene.

Components: The ORF clone is ion-exchange column purified and shipped in a 2D barcoded Matrix tube containing 10ug of transfection-ready, dried plasmid DNA (reconstitute with 100 ul of water).

RefSeq: [NM\\_001301084.2](#)

RefSeq Size: 9655 bp

RefSeq ORF:	4326 bp
Locus ID:	23365
UniProt ID:	<a href="#">Q9NZN5</a>
Cytogenetics:	11q23.3
Protein Pathways:	Axon guidance, Regulation of actin cytoskeleton, Vascular smooth muscle contraction
MW:	162.4 kDa
Gene Summary:	Rho GTPases play a fundamental role in numerous cellular processes that are initiated by extracellular stimuli working through G protein-coupled receptors. The encoded protein may form a complex with G proteins and stimulate Rho-dependent signals. This protein has been observed to form a myeloid/lymphoid fusion partner in acute myeloid leukemia. Three transcript variants encoding different isoforms have been found for this gene. [provided by RefSeq, Jul 2014]