

Product datasheet for **RG240146**

PTP kappa (PTPRK) (NM_001291984) Human Tagged ORF Clone

Product data:

Product Type:	Expression Plasmids
Product Name:	PTP kappa (PTPRK) (NM_001291984) Human Tagged ORF Clone
Tag:	TurboGFP
Symbol:	PTPRK
Synonyms:	R-PTP-kappa
Mammalian Cell Selection:	Neomycin
Vector:	pCMV6-AC-GFP (PS100010)
E. coli Selection:	Ampicillin (100 ug/mL)
ORF Nucleotide Sequence:	>RG240146 representing NM_001291984. Blue=ORF Red=Cloning site Green=Tag(s)

```
GCTCGTTTGTGAAACCGTCAGAATTTTGTAAATACGACTCACTATAGGGCGGCCGGGAATTCGTGACTG
GATCCGGTACCGAGGAGATCTGCCGCCCGATCGCC
ATGGATACGACTGCGGGCGGGCGCTGCCTGCTTTTGTGGCGCTCTTGCTCCTCTCTCCTTGGCCTCTC
CTGGGATCGGCCAAAGGCCAGTTCTCCGCAGGTGGCTGTACTTTTGTGATGATGGTCCAGGGCCTGTGAT
TACCACCAGGATCTGTATGATGACTTTGAATGGTGCATGTTAGTGCTCAAGAGCCTCATTATCTACCA
CCCAGATGCCCAAGGTTCTATATGATAGTGGACTCTCAGATCACGACCCTGGAGAAAAAGCCAGA
CTTCAGCTGCCTACAATGAAGGAGAACGACTCACTGCATTGATTTAGTTACCTATTATATAGCCAG
AAAGACTGAATCCTGGCACTTTGAACATATTAGTTAGGGTGAATAAAGGACCTTTGCCAATCCAATT
TGGAATGTGACTGGATCACGGGTAGAGATTGGCTTCGGGCTGAGCTAGCAGTGAGCACCTTTGGCCC
AATGAATATCAGGTAATATTTGAAGCTGAAGTCTCAGGAGGGAGAAGTGGTTATATTGCCATTGATGAC
ATCCAAGTACTGAGTTATCCTTGTGATAAATCTCCTCATTTCCCGTCTAGGGGATGTAGAGGTGAAT
GCAGGGCAAAACGCTACATTTCACTGATTGCCACAGGGAGAGATGCTGTGCATAACAAGTTATGGCTC
CAGAGACGAAATGGAGAAGATATACCAGTAGCCAGACTAAGAACATCAATCATAGAAGGTTTGGCGCT
TCCTTCAGATTGCAAGAAGTGACAAAACTGACCAGGATTTGTATCGCTGTGTAECTCAGTCAGAACGA
GGTCCGGTGTGCCAATTTTGTCAACTATTGTGAGAGAACCAGCAAGACCCATTGCTCCTCCTCAG
CTTCTTGGTGTGGCCCTACATATTTGCTGATCCAATAAATGCCAECTCGATCATTGGCGATGGTCTCT
ATCATCCTGAAAGAAGTAGAGTACCGAATGACATCAGGATCCTGGACAGAAACCCATGCAGTCAATGCT
CCAACTTACAATTTATGGCATTAGATCCAGATACCGAATATGAGATCCGAGTTCTACTTACAAGACCT
GGTGAAGGTGGAACGGGGCTCCCAGGACCTCCACTAATCACCAGAACAAAATGTGCAGAACCTATGAGA
ACCCAAAGACATTAAGATTGCTGAAATACAGGCAAGACGGATTGCTGTGGACTGGGAATCCTTGGGT
TACAACATTACGCGTTGCCACACTTTTAAATGTCATCTGCTACCATTACTTCCGTGGTCAACAGAG
AGCAAGGCAGACTGTTTGGACATGGACCCAAAGCCCTCAGCATGTTGTGAACCATCTGCCACCTTAT
ACAAATGTCAGCCTCAAGATGATCCTAACCAATCCAGAGGGAAGGAAGGAGAGTGAAGAGACAATTATT
CAAAGTATGAAGATGTGCTGCTCCCGTACCAGTAAAATCTCTTCAAGGAACATCCTTTGAAAATAAG
```



[View online »](#)

ATCTTCTGAACTGGAAGAACCTTTGGATCCAAATGGAATCATCACTCAATATGAGATCAGCTATAGC
AGTATAAGATCATTTGATCCTGCAGTCCAGTGGCTGGACCTCCCAGACTGTATCAAATTTATGGAAC
AGTACACACCATGTCTTTATGCATCTCCACCCTGGAACCACGTACCAGTTTTTCATAAGAGCCAGCAGC
GTCAAAGGCTTTGGTCCAGCCACAGCCATCAATGTCACCACCAATATCTCAGCTCCAACCTTTACCTGAC
TATGAAGGAGTTGATGCCTCTCTCAATGAAACTGCCACCACAATAACTGTATTGTTGAGACCAGCACAA
GCCAAAGGTGCTCCTATCAGTGTCTATCAGATTGTTGTGGAAGAACTGCACCCACACCCGAACCAAGAGA
GAAGCCGGAGCCATGGAATGCTACCAGTTCCTGTACATACCAAAATGCCATGAGTGGGGTGCACCG
TATTACTTTGCTGCAGAACTCCCCCGGAAACCTACCTGAGCCTGCCCGTTCACTGTGGGTGACAAT
CGGACCTACCAAGGCTTTTGAACCTCCTTTGGCTCCGCGCAAAGGATACAACATCTATTTCCAGGCG
ATGAGCAGTGTGGAGAAGGAAACTAAAACCCAGTGCCTACGCATTGCTACAAAAGCAGCAACAGAAGAA
CCAGAAGTGATCCAGATCCCGCAAGCAGACAGACAGAGTGGTAAAAATAGCAGGAATTAGTGCTGGA
ATTTTGGTGTTCATCCTCCTTCTCTAGTTGTCATTAATTGTAAGAAAGAGCAAACCTTCTAAAAAA
CGCAAAGATGCCATGGGAATACCCGGCAGGAGATGACTCACATGGTGAATGCAATGGATCGAAGTTAT
GCTGATCAGAGCACTCTGCATGCAGAAGATCCTCTTCCATCACCTTCATGGACCAACATAACTTTAGT
CCAAGATATGAGAACCACAGTGTACAGCAGAGTCCAGTGCCTTCTAGACGTACCTCGCTACCTCTGT
GAGGGGACGGAATCCCCTTACCAGACAGGACAGCTGCATCCAGCCATCAGGGTAGCTGATTTACTGCAG
CACATTAATCTCATGAAGACATCAGACAGCTATGGGTTCAAAGAGGAATATGAGAGCTTTTTTGAAGGA
CAGTCAGCATCTTGGGATGTAGCTAAAAAGATCAAAATAGAGCAAAAAACCGATATGGAACATTATA
GCATATGATCACTCCAGAGTGATTTTGAACCCGTAGAGGATGATCCTTCTCAGATTATTAATGCC
AACTATATTGATGGCTACCAGAGACCAAGTCATTACATTGCAACCCAAGTCCCCTTCATGAAACAGTG
TATGATTTCTGGAGGATGATTTGGCAAGAACAATCTGCTTGCAATTGTGATGGTTACAAATTTAGTTGAG
GTTGGCCGGGTTAAATGCTATAAATATTGGCCTGATGATACTGAAGTTTATGGTACTTCAAAGTAACG
TGTGTAGAAATGGAACCACTTGTGAATATGTAGTTAGGACATTCACCCTGGAAGGAGGGGGTACAAT
GAAATCCGTGAAGTTAAACAGTTCCATTTACGGGCTGGCCTGACCATGGAGTGCCTACCATGTACA
GGGCTGCTTCTTTATCCGGCAGTCAAGTTATCAAACCTCCCAGTGTGGCCCATCGTTGTACAT
TGCAGTGTGGTGTGGACGAACCTGGTGTACATTGTGATTGACATCATGCTAGACATGGCTGAAAGA
GAGGGTGTGTTGATATTTACAATTGTGTCAAAGCCTTAAGATCTCGGCGTATTAATATGGTCCAGACA
GAGGAACAGTACATTTTATTATGATGCCATTTAGAAAGCCTGCTTATGTGGAGAACTGCCATACCT
GTCTGTGAATTTAAAGCTGCATATTTGATATGATTAGAATAGACTCCCAGACTAACTCTCACATCTC
AAGGATGAATTTAGACTCTGAATTCAGTCACCCCTCGACTACAAGCTGAAGACTGCAGTATAGCGTGC
CTGCCAAGGAACCATGACAAGAACCCTTTCATGGACATGCTGCCACCTGACAGATGTCTGCCTTTTTTA
ATTACAATTGATGGGGAGAGCAGTAACTACATCAATGCTGCTCTTATGGACAGCTACAGGCAACCGACT
GCTTTCATCGTCACACAATACCTCTGCCAAACACTGTAAGAGACTTCTGGAGATTAGTGTATGATTAT
GGCTGTACCTCCATTGTGATGTTAAACGAAGTCGACTTGTCCCAGGGCTGCCCTCAGTACTGGCCAGAG
GAAGGGATGCTACGATATGGCCCATCCAAGTGGAAATGTATGCTTGTTCATGGACTGTGATGTGATC
AACCGGATTTTTAGGATATGCAATCTAACAAGACCACAGGAAGGTTATCTGATGGTGAACAGTTTCAG
TACCTAGGATGGGCTTCTCATCGAGAAGTGCCTGGATCCAAAAGGTCATTCTTGAACCTGATACTTCAG
GTGGAAAAGTGGCAGGAGGAATGCGAGGAAGGGGAAGGCCGACGATTATCCACTGCCTAAATGGTGGC
GGGCGAAGTGGCATGTTCTGTGCTATAGGCATCGTTGTTGAAATGGTGAACGGCAAAATGTTGTGAT
GTTTTCCATGCAGTAAAGACACTGAGGAACAGCAAGCCAAACATGGTGGAAAGCCCGGAGCAATACCGT
TTCTGCTATGATGTAGCTTTGGAGTACCTGGAATCATCT
AGCGGACCGACGCGTACGCGGCCGCTCGAG - GFP Tag - GTTTAAAC

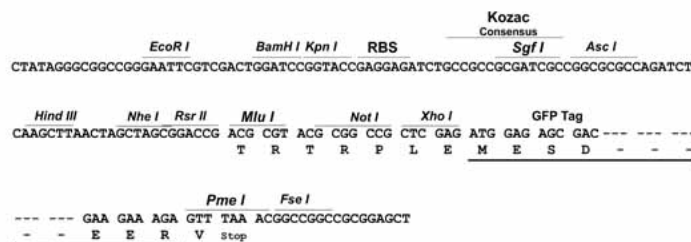
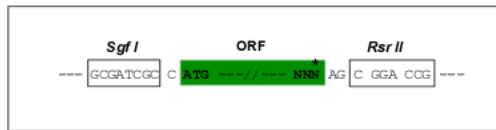
Protein Sequence: >Peptide sequence encoded by RG240146
 Blue=ORF Red=Cloning site Green=Tag(s)

MDTTAAAALPAFVALLLLSPWPLLGSAQQQFSAGGCTFDDGPGACDYHQDLYDDFEWVHVSAQEPHYLP
 PEMPQGSYMIVDSSDHPGEKARLQLPTMKENDTHCIDFSYLLYSQKGLNPGTLNILVRVNGKPLANPI
 WNVTFGTGRDWLRAELAVSTFWPNEYQVIFEAEVSGGRSGYIAIDDIQVLSYPCDKSPHFLRLGDVEVN
 AGQNATFQCIATGRDAVHNKWLQRRNGEDIPVAQTKNINHRRFAASFRLQEVTKTDQDL YRCVTQSER
 GSGVSNFAQLIVREPPRIAPPQLLGVGPTYLLIQLNANSIIGDGPILKEVEYRMTSGSWTETHAVNA
 PTYKLWHLDPDTEYEIRVLLTRPGEGGTGLPGPPLITRTKCAEPMRTPKTLKIAEIQARRIAVDWESLG
 YNITRCHTFNVTICYHYFRGHNESKADCLDMDPKAQHVVNHLPPYTNVSLKMILTNPEGRKESEETII
 QTDEDVPGVPVKSLQGTSFENKIFLNWKEPLDPNGIITQYEISYSSIRSFDPAVPVAGPPQTVSNLWN
 STHHVFMLHPGTTYQFFIRASTVKGFGPATAINVTTNISAPTLPDYEGVDASLNETATTITVLLRPAQ
 AKGAPISAYQIVVEELHPHRTKREAGAMECYQVPVYQNAMSGGAPYYFAELPPGNLPEPAPFTVGDN
 RTYQGFWNPLAPRKGYNIFYQAMSSVEKETKTQCVRIATKAATEEPEVIPDPAKQTRVVKIAGISAG
 ILVFI LLLLVLIVKSKLAKKRKDAMGNTRQEMTHMVNAMDRSYADQSTLHAEDPLSIFMDQHNF S
 PRYENHSATAESSRLLDVPRYLCEGTESPYQTGQLHPAIRVADLLQHINLMKTSDSYGFKEEYESFFEG
 QSASWDVAKKDQNRANKRYGNIAYDHSRVLQPVEDDPSSDYINANYIDGYQRP SHYIATQGPVHETV
 YDFWRMIWQEQSACIVMVTNLVEVGRVKCYKYWPDDTEVYGFVTCVEMEPLAEYVVRTFTLERRGYN
 EIREVKQFHFTGWPDHGVPYHATGLLSFIRRVKLSNPPSAGPIVVHCSAGAGRTGCYIVIDIMDMAER
 EGVVDIYNCVKALRSRRINMVQTEEQYIFIHDAILEACLGETAIPVCEFKAA YFDMIRIDSQTNSSHL
 KDEFQTLNSVTPRLQAEDCSIACLRPNHDKNRFMDMLPPDRCLPFLITIDGESSNYINAALMDSYRQPA
 AFIVTQYPLPNTVKDFWRLVYDYGCTSI VMLNEVDLSQGCPQYWPEEGMLRYGPIQVECMSCSMDCDVI
 NRIFRICNLTRPQEGYLMVQQFYQLGWASHREVPGSKRSFLKLILQVEKWQEECEEGEGRTHIHLNGG
 GRSGMFC AIGIVVEMVKRQNVVDVFHAVKTLRNSKPNMVEAPEQYRF CYDVALEYLESS
 SGPTRTRPLEMESDESGLPAMEIECRITGTLNGVEFELVGGGEGTPEQGRMTNKMKSTKGALTFSPYLL
 SHVMGYGFYHFGTYPSGYENPFLHAINNGGYTNTRIEKYEDGGV LHVFSYRYEAGRIGDFKVMGTGF
 PEDSVIFTDKIIRSNATVEHLHPMGDNDLDGSFTRTFLRDGGYSSVVD SHMHFKSAIHPSILQNGGP
 MFAFRRVEEDHSNTELGIVEYQHAFKTPDADAGEERV

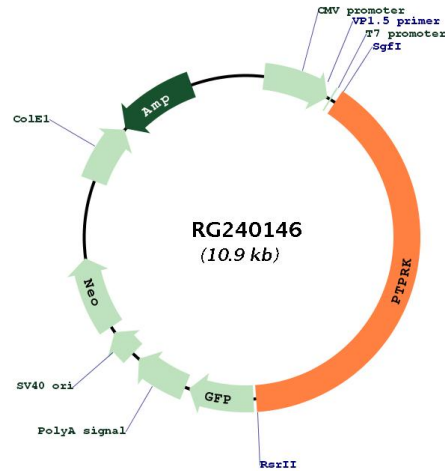
Restriction Sites: SgfI-RsrII

Cloning Scheme:

Cloning sites used for ORF Shuttling:



Plasmid Map:



ACCN: NM_001291984

ORF Size: 4317 bp

OTI Disclaimer: The molecular sequence of this clone aligns with the gene accession number as a point of reference only. However, individual transcript sequences of the same gene can differ through naturally occurring variations (e.g. polymorphisms), each with its own valid existence. This clone is substantially in agreement with the reference, but a complete review of all prevailing variants is recommended prior to use. [More info](#)

OTI Annotation: This clone was engineered to express the complete ORF with an expression tag. Expression varies depending on the nature of the gene.

Components: The ORF clone is ion-exchange column purified and shipped in a 2D barcoded Matrix tube containing 10ug of transfection-ready, dried plasmid DNA (reconstitute with 100 ul of water).

RefSeq: [NM_001291984.2](#)

RefSeq Size: 6101 bp

RefSeq ORF:	4320 bp
Locus ID:	5796
UniProt ID:	Q15262
Cytogenetics:	6q22.33
Protein Families:	Druggable Genome, Phosphatase, Transmembrane
MW:	162.6 kDa
Gene Summary:	<p>The protein encoded by this gene is a member of the protein tyrosine phosphatase (PTP) family. PTPs are known to be signaling molecules that regulate a variety of cellular processes including cell growth, differentiation, mitotic cycle, and oncogenic transformation. This PTP possesses an extracellular region, a single transmembrane region, and two tandem catalytic domains, and thus represents a receptor-type PTP. The extracellular region contains a meprin-A5 antigen-PTP mu (MAM) domain, an Ig-like domain and four fibronectin type III-like repeats. This PTP was shown to mediate homophilic intercellular interaction, possibly through the interaction with beta- and gamma-catenin at adherens junctions. Expression of this gene was found to be stimulated by TGF-beta 1, which may be important for the inhibition of keratinocyte proliferation. [provided by RefSeq, Jul 2008]</p>