

Product datasheet for **RG240137**

FANCA (NM_001286167) Human Tagged ORF Clone

Product data:

Product Type:	Expression Plasmids
Product Name:	FANCA (NM_001286167) Human Tagged ORF Clone
Tag:	TurboGFP
Symbol:	FANCA
Synonyms:	FA; FA-H; FA1; FAA; FACA; FAH; FANCH
Mammalian Cell Selection:	Neomycin
Vector:	pCMV6-AC-GFP (PS100010)
E. coli Selection:	Ampicillin (100 ug/mL)
ORF Nucleotide Sequence:	>RG240137 representing NM_001286167. Blue=ORF Red=Cloning site Green=Tag(s)

```
GCTCGTTTGTGAAACCGTCAGAATTTTGTAAATACGACTACTATAGGGCGGCCGGGAATTCGTCGACTG
GATCCGGTACCGAGGAGATCTGCCGCCGCGATCGCC
ATGTCCGACTCGTGGGTCCCGAACTCCGCCTCGGGCCAGGACCCAGGGGGCCCGCGAGGGCCTGGGCC
GAGCTGCTGGCGGAAGGGTCAAGAGGGAAAAATATAATCCTGAAAGGGCACAGAAATTAAGGAATCA
GCTGTGCGCCTCTGCGAAGCCATCAGGACCTGAATGCCCTTTTGCTTGAGGTAGAAGGTCCACTGTGT
AAAAAATGTCTCTCAGCAAAGTGATTGACTGTGACAGTTCTGAGGCCTATGCTAATCATTCTAGTTCA
TTTATAGGCTCTGCTTTGCAGGATCAAGCCTCAAGGCTGGGGTTCCCGTGGGTATTCTCTCAGCCGGG
ATGGTTGCCTCTAGCGTGGGACAGATCTGCACGGCTCCAGCGGAGACCAGTCACCCTGTGCTGCTGACT
GTGGAGCAGAGAAAGAAGCTGTCTCCCTGTTAGAGTTTGCTCAGTATTTATTGGCACACAGTATGTTT
TCCCGTCTTTCCTTCTGTCAAGAATTATGAAAAATACAGAGTTCTTTGTTGCTTGAAGCGGTGTGGCAT
CTTCACGTACAAGGCATTGTGAGCCTGCAAGAGCTGCTGGAAAGCCATCCCGACATGCATGCTGTGGGA
TCGTGGCTCTTCAGGAATCTGTGCTGCCTTTGTGAACAGATGGAAGCATCCTGCCAGCATGCTGACGTC
GCCAGGGCCATGCTTTCTGATTTGTTCAAATGTTTGTGTTGAGGGGATTTAGAAAACTCAGATCTG
AGAAGAACTGTGGAGCCTGAAAAATGCCGAGGTCACGGTTGATGTACTGCAGAGAATGCTGATTTTT
GCATTTGACGCTTTGGCTGCTGGAGTACAGGAGGAGTCCCTCACTCACAAGATCGTGAGGTGCTGGTTC
GGAGTGTTCAGTGGACACAGCCTTGGCAGTGAATTTCCACAGATCCTCTGAAGAGGTTCTTCAGTCA
ACCCTGACTCAGATACTCACTCACAGCCCTGTGCTGAAAGCATCTGATGCTGTTCAAGATGCAGAGAGAG
TGGAGCTTTGCGCGGACACACCCTCTGCTCACCTCACTGTACCGCAGGCTCTTTGTGATGCTGAGTGCA
GAGGAGTTGTTGGCCATTTGCAAGAAGTTCTGGAAACGCAGGAGGTTCACTGGCAGAGAGTGCTCTCC
TTTGTGCTGCCCTGGTTGTCTGCTTTCCAGAAGCGCAGCAGCTGCTTGAAGACTGGGTGGCGCCTTTG
ATGGCCCAGGCATTGAGAGCTGCCAGCTGGACAGCATGGTCACTGCGTTCTGTTGTGCGCCAGGCA
GCACTGGAGGGCCCTCTGCGTTCTGTCAATGCAGACTGGTTCAAGGCCTCCTTTGGGAGCACACGA
GGCTACCATGGCTGCAGCAAGAAGGCCCTGGTCTTCTGTTTACGTTCTGTGCAAACTCGTGCCTTTT
GAGTCTCCCCGGTACCTGCAGGTGCACATTCTCCACCCACCCCTGTTCCCGCAAGTACCGCTCCCTC
```



[View online »](#)

CTCACAGACTACATCTCATTGGCCAAGACACGGCTGGCCGACCTCAAGGTTTCTATAGAAAAATGGGA
CTCTACGAGGATTTGTCATCAGCTGGGGACATTACTGAGCCCCACAGCCAAGCTCTTCAGGATGTTGAA
AAGGCCATCATGGTGTGGAGCATACGGGGAACATCCCAGTCACCGTCATGGAGGCCAGCATATTCAGG
AGGCCTTACTACGTGTCCCACTTCTCCCCGCCCTGCTCACACCTCGAGTGTCCCCAAAGTCCCTGAC
TCCCGTGTGGCGTTTATAGAGTCTCTGAAGAGAGCAGATAAAAATCCCCCATCTCTGTACTCCACCTAC
TGCCAGGCCTGCTCTGCTGCTGAAGAGAAGCCAGAAGATGCAGCCCTGGGAGTGAGGGCAGAACCCAAC
TCTGCTGAGGAGCCCTGGGACAGCTCACAGCTGCACTGGGAGAGCTGAGAGCCTCCATGACAGACCCC
AGCCAGCGTGATGTTATATCGGCCACAGGTGGCAGTGATTTCTGAAAGACTGAGGGCTGTCCTGGGCCAC
AATGAGGATGACAGCAGCGTTGAGATATCAAAGATTGAGCTCAGCATCAACACGCCGAGACTGGAGCCA
CGGGAACACATGGCTGTGGACCTCCTGCTGACGCTTTTCTGTCAGAACCTGATGGCTGCCTCCAGTGTC
GCTCCCCGGAGAGGCAGGGTCCCTGGGCTGCCCTCTTCGTGAGGACCATGTGTGGACGTGTGCTCCCT
GCAGTGTCAACCCGGCTCTGCCAGCTGCTCCGTACCAGGGCCCGAGCCTGAGTGCCCCACATGTGCTG
GGGTTGGCTGCCCTGGCCGTGCACCTGGGTGAGTCCAGGTCTGCGCTCCCAGAGGTGGATGTGGGTCT
CCTGCACCTGGTGTGGCCTTCTGTCCCTGCGCTCTTTGACAGCCTCCTGACCTGTAGGACGAGGGAT
TCCTTGTCTTCTGCCTGAAATTTGTACAGCAGCAATTTCTTACTCTCTCTGCAAGTTTTCTTCCCAG
TCACGAGATACTTTGTGCAGCTGCTTATCTCCAGGCCTTATTA AAAAGTTTCAGTTCCCTCATGTTGAGA
TTGTTCTCAGAGGCCCGACAGCCTCTTTCTGAGGAGACGTAGCCAGCCTTTCTGGAGACCCTTGAC
CTTCTTCTGCAGACTGGCAGAGAGCTGCCCTCTCTCTGACACACAGAACCTTCCGAGAGGTGTTG
AAAGAGGAAGATGTTCACTTAACCTACCAAGACTGGTTACACCTGGAGCTGGAAATTCACCTGAAGCT
GATGCTCTTTCAGATACTGAACGGCAGGACTTCCACCAGTGGGCGATCCATGAGCACTTTCTCCCTGAG
TCCTCGGCTTCAGGGGGCTGTGACGGAGACCTGCAGGCTGCGTGTACCATTCTTGTCAACGCACTGATG
GATTTCCACCAAAGCTCAAGGAGTTATGACCACTCAGAAAATTCGATTTGGTCTTTGGTGGCCGCACA
GGAAATGAGGATATTATTTCCAGATTGCAGGAGATGGTAGCTGACCTGGAGCTGCAGCAAGACCTATA
GTGCCTCTCGGCCACACCCTTCCAGGAGCACTTCTCTTTGAGATTTCCGCAGACGGCTCCAGGCT
CTGACAAGCGGGTGGAGCGTGGCTGCCAGCCTTACAGACAGAGGGAGCTGCTAATGTACAAACGGATC
CTCCTCCGCTGCCTTCTGCTCTGCTGCGGCAGCAGCTTCCAGGCAGAACAGCCCATCACTGCCAGA
TGCGAGCAGTTCTTCCACTTGGTCAACTCTGAGATGAGAACTTCTGCTCCCACGGAGGTGCCCTGACA
CAGGACATCACTGCCACTTCTTCCAGGGGCTCCTGACGCTGTCTGCGGAGCAGAGACCCCTCCCTG
ATGGTCGACTTCATACTGGCCAAGTGCCAGACGAAATGCCCTTAATTTGACCTCTGCTCTGGTGTGG
TGGCCGAGCCTGGAGCCTGTGCTGCTCTGCCGGTGGAGGAGACTGCCAGAGCCCGCTGCCCGGGAA
CTGCAGAAGCTACAAGAAGGCCGCGAGTTTCCAGCGATTTCTCTCCCCTGAGGCTGCCTCCCCAGCA
CCCAACCCGGACTGGCTCTCAGCTGCTGCACTGCACTTTGCGATTCAACAAGTCAGGGAAGAAAACATC
AGGAAGCAGCTAAAGAAGCTGGACTGCGAGAGAGAGGAGCTATTGGTTTTCTTTCTTCTCTCCTTG
ATGGGCCCTGCTGTGTCATCTGACCTCAAATAGCACCACAGACCTGCCAAAGGCTTCCACGTTTGT
GCAGCAATCCTCGAGTGTAGAGAAGAGGAAGATATCCTGGCTGGCACTCTTTCAGTTGACAGAGAGT
GACCTCAGGCTGGGGCGGCTCCTCCTCCGTGTGGCCCCGATCAGCACACCAGGCTGCTGCCTTTCGCT
TTTTACAGTCTTCTCTCTACTTCCATGAAGACCGGCCATCAGGGAAGAGGCTTCTGATGTTGCT
GTGGACATGACTGAAGCTGGTCCAGCTCTTCGTGGCTGGGGATACAAGCACAGTTTACCTCCAGCT
GGCAGGAGCCTGGAGCTCAAGGGTCAGGCAGGGCAACCCCGTGGAACTGATAACAAAAGCTCGTCTTT
TCTGCTGAGTTAATACCTCGGTGCCCGAAAAAGAGCTTCTCACACGTGGCAGAGCTGCTGGC
ACGCGTACGCGGCCGCTCGAG - GFP Tag - GTTTAAAC

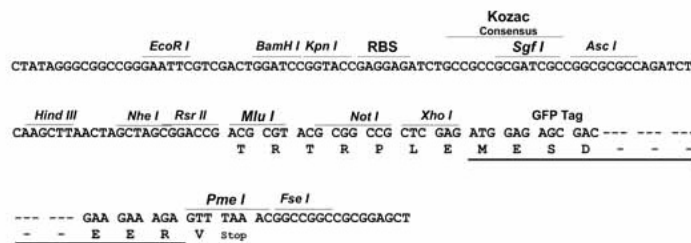
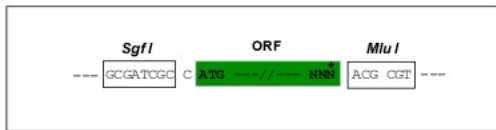
Protein Sequence: >Peptide sequence encoded by RG240137
 Blue=ORF Red=Cloning site Green=Tag(s)

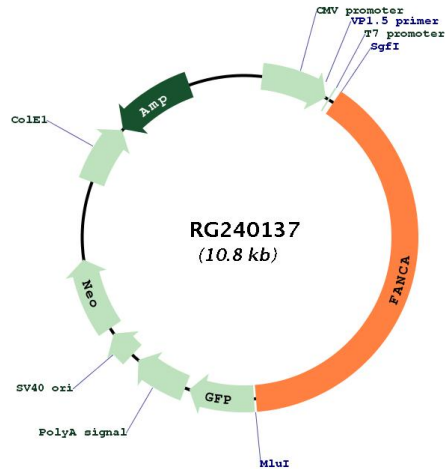
MSDSWVPNSASGQDPGGRRRAWAELLAGRVKREKYNPERAQLKESAVRLLRSHQDLNALLLEVEGPLC
 KKLKSLKVIDCDSSEAYANHSSSFIGSALQDQASRLGVPVIGILSAGMVASSVVGQICTAPAETSHPVLLT
 VEQRKKLSSLLFAQYLLAHSMSFRLSFCQELWKIQSSLLLEAVWHLHVQGIIVSLQELLESHPDMAVAVG
 SWLFRNLCCLEQMEASCQHADVARAMLSDFVQMFVLRGFKNSDLRRTVEPEKMPQVTVVDLQRMLIF
 ALDALAAGVQEESSTHKIVRCWFGVFSGHTLGSVISTDPLKRRFSHTLTQILTHSPVLKASDAVQMQRE
 WSFARTHPLLTSLYRRLFVMLSAAELVGHLEQVLETQEVHWQVRLSFSALVVCPEAQQLLEDWVARL
 MAQAFESCQLDSMVTAFLLVVRQAALLEGPSAFLSYADWFKASFGSTRGYHGCSKKALVFLFTLSELVVF
 ESPRYLQVHILHPPLVPGKYRSLTLDYISLAKTRLADLVSIENMGLYEDLSSAGDITEPHSQALQDVE
 KAIMVFEHTGNIPVTMEASIFRRPYVSHFLPALLTPRVLKVPDSRVAFIESLKRADKIPPSLYSTY
 CQACSAAEKPEDAALGVRAEPNSAEPLGQLTAALGELRASMTDPSQRDVISAQVAVISERLRAVLGH
 NEDDSSVEISKIQLSINTPRLEPREHMAVDLLT SFCQNLMAASSVAPPERQGPWAALFVRTMCGRVLV
 AVLTRLCLLQRLRHQGPSLSAPHVGLAALAVHLGESRSALPEVDVGGPPAPGAGLPVPALFDSLLTCRTRD
 SLFFCLKFTAATISYSLCKFSSQSRDTLCSCLSPGLIKKFQFLMFRLFSEARQPLSEEDVASLSWRPLH
 LPSADWQRAALS L WTHRTRFREVLEEDVHLTYQDWLHLELEIQPEADALSDTERQDFHWAIHEHFLPE
 SSASGGCDGDLQAACTILVNALMDFHQSSRSYDHSNSDLVFGGRTGNEDIISRLQEMVADLELQDQDI
 VPLGHTPSQEHLFEIFRRRLQALTSGWSVAASLRQRRELLMYKRILLRPLSSVLCGSSQAEQPITAR
 CEQFFHLVNSEMRNFCSHGGALTQDITAHFFRGLLNACLRSDPSLMVDFILAKCQTKCPLILTSALVW
 WPSLEPVLLCRWRRHCQSPLPRELQKLQEQRFASDFLSPEAASPAPNDWLSAALHFAIQVRENI
 RKQLKLDLCEREELLVFLFFFSLMGLLSSHLTSNSTDLPKAFHVCAAIIECLEKRKISWLALFQLTES
 DLRLGRLLLRVAPDQHTRLLPF AFYSLLSYFHEDAAIREAFLHVAVDMYLLKLVQLFVAGDTSTVSPPA
 GRSLLELKGQAGQPRGTDNKSSSFAAVNTSVPEKELLTRGRAAG
 TRTRPLEMSDESGLPAMEIECRITGTLNGVEFELVGGGEGTPEQGRMTNKMSTKGALTFSPYLLSHV
 MGYGFYHFGTYPSTYENPFLHAINNGGYNTRIEKYEDGGVHVLSFSYRYEAGRVIGDFKVMGTGFPEP
 SVIFTDKIIIRSNATVEHLHPMGDNDLDGSFTRTFSLRDGGYSSVVD SHMHFKSAIHPSILQNGGPMFA
 FRRVEEDHSNTELGIVEYQHAFKTPDADAGEERV

Restriction Sites: SgfI-MluI

Cloning Scheme:

Cloning sites used for ORF Shutting:



Plasmid Map:


ACCN: NM_001286167

ORF Size: 4272 bp

OTI Disclaimer: The molecular sequence of this clone aligns with the gene accession number as a point of reference only. However, individual transcript sequences of the same gene can differ through naturally occurring variations (e.g. polymorphisms), each with its own valid existence. This clone is substantially in agreement with the reference, but a complete review of all prevailing variants is recommended prior to use. [More info](#)

OTI Annotation: This clone was engineered to express the complete ORF with an expression tag. Expression varies depending on the nature of the gene.

Components: The ORF clone is ion-exchange column purified and shipped in a 2D barcoded Matrix tube containing 10ug of transfection-ready, dried plasmid DNA (reconstitute with 100 ul of water).

RefSeq: [NM_001286167.3](#)

RefSeq Size: 5464 bp

RefSeq ORF: 4275 bp

Locus ID: 2175

UniProt ID: [O15360](#)

Cytogenetics: 16q24.3

Protein Families: Druggable Genome

MW: 159.5 kDa

Gene Summary: The Fanconi anemia complementation group (FANC) currently includes FANCA, FANCB, FANCC, FANCD1 (also called BRCA2), FANCD2, FANCE, FANCF, FANCG, FANCI, FANCJ (also called BRIP1), FANCL, FANCM and FANCN (also called PALB2). The previously defined group FANCH is the same as FANCA. Fanconi anemia is a genetically heterogeneous recessive disorder characterized by cytogenetic instability, hypersensitivity to DNA crosslinking agents, increased chromosomal breakage, and defective DNA repair. The members of the Fanconi anemia complementation group do not share sequence similarity; they are related by their assembly into a common nuclear protein complex. This gene encodes the protein for complementation group A. Alternative splicing results in multiple transcript variants encoding different isoforms. Mutations in this gene are the most common cause of Fanconi anemia. [provided by RefSeq, Jul 2008]