

Product datasheet for **RG240131**

LPHN2 (ADGRL2) (NM_001297704) Human Tagged ORF Clone

Product data:

Product Type:	Expression Plasmids
Product Name:	LPHN2 (ADGRL2) (NM_001297704) Human Tagged ORF Clone
Tag:	TurboGFP
Symbol:	ADGRL2
Synonyms:	CIRL2; CL2; LEC1; LPHH1; LPHN2
Mammalian Cell Selection:	Neomycin
Vector:	pCMV6-AC-GFP (PS100010)
E. coli Selection:	Ampicillin (100 ug/mL)
ORF Nucleotide Sequence:	>RG240131 representing NM_001297704. Blue=ORF Red=Cloning site Green=Tag(s)

```
GCTCGTTTGTGAAACCGTCAGAATTTTGTAAACGACTCACTATAGGGCGCCGGGAATTCGTCGACTG
GATCCGGTACCGAGGAGATCTGCCGCCGCGATCGCC
ATGGTGTCTTCTGGTTGCAGAATGCGAAGTCTGTGGTTTATCATTGTAATCAGCTTCTACCAAATACA
GAAGGTTTCAGCAGAGCAGCTTTACCATTTGGGCTGGTGAGGCGAGAATTATCCTGTGAAGGTTATTCT
ATAGATCTGCGATGCCCGGGCAGTGATGTCATCATGATTGAGAGCGCTAACTATGGTCGGACGGATGAC
AAGATTTGTGATGCTGACCCATTCAGATGGAGAATACAGACTGCTACCTCCCGATGCCTTCAAATTT
ATGACTCAAAGGTGCAACAATCGAACACAGTGTATAGTAGTACTGGGTCAGATGTGTTTCTGATCCA
TGTCTTGAACATACAAATACCTTGAAGTCCAATATGAATGTGTCCCTTACATTTTGTGTGCTCTGGG
ACCTTGAAAGCAATTGTGGACTACCATGTATATGAAGCTGAACAAAAGGCGGGTGTGGTGCAGG
GACCCCTTTCAGGCTGCAGATAAAATTTATTTTCATGCCCTGGACTCCCTATCGTACCGATACTTTAATA
GAATATGCTTCTTTAGAAGATTTCCAAAATAGTCGCCAAACAACAATATAAACTTCCAAATCGAGTA
GATGGTACTGGATTTGTGGTGTATGATGGTGTCTTCTTTAACAAAGAAAGAACGAGGAATTTGTG
AAATTTGACTTGAGGACTAGAATTAAGAGTGGCGAGGCCATAATTAATGATGCAACTACCATGATACC
TCACCATACAGATGGGGAGGAAAGACTGATATCGACCTAGCAGTTGATGAAAATGGTTTATGGGTCATT
TACGCCACTGAACAGAACAAATGGAATGATAGTTATTAGCCAGCTGAATCCATACACTCTTCGATTTGAA
GCAACGTGGGAGACTGTATACGACAAACGTGCCGCATCAAATGCTTTTATGATATGCGGAGTCCTCTAT
GTGGTTAGGTGAGTTTATCAAGACAATGAAAGTGAACAGGCAAGAAGCAATTGATTACATTTATAAT
ACCCGATTAACCGAGGAGAATATGTAGATGTTCCCTTCCCAACAGTATCAGTATATTGCTGCAGTG
GATTACAATCCAAGAGATAACCAACTTTACGTGTGGAACAATAACTTCATTTTACGATATTCTCTGGAG
TTTGGTCCACCTGATCCTGCCAAGTGCCTACCACAGCTGTGACAATAACTTCTCAGCTGAGCTGTTC
AAAACCATAATATCAACCACAAGCACTACTTCACAGAAAGGCCCATGAGCACAAGTGTAGCTGGATCA
CAGGAAGGAAGCAAAGGGACAAAACCACCTCCAGCAGTTTCTACAACAAAATTCACCTATAACAAAT
ATTTTCCCTGCCAGAGAGATTCTGTGAAGCATTAGACTCCAAGGGGATAAAGTGGCCTCAGACACAA
AGGGGAATGATGGTTGAACGACCATGCCCTAAGGGAACAAGGGAAGTGCCTCATATCTCTGCATGATT
```



[View online >](#)

TCCACTGGAACATGGAACCCCTAAGGGCCCCGATCTTAGCAACTGTACCTCACACTGGGTGAATCAGCTG
GCTCAGAAGATCAGAAGCGGAGAAAAATGCTGCTAGTCTTGCCAATGAACTGGCTAAACATACCAAAGGG
CCAGTGTTTGCTGGGGATGTAAGTTCTTCAGTGAGATTGATGGAGCAGTTGGTGGACATCCTTGATGCA
CAGCTGCAGGAACTGAAACCTAGTGA AAAAGATT CAGCTGGACGGAGTTATAACAAGGCAATTGTTGAC
ACAGTGGACAACCTTCTGAGACCCGAGCTTTGGAATCATGGAACATATGAATCTTCTGAACAAGCA
CATACTGCAACAATGTTACTCGATACATTGGAAGAAGGAGCTTTTGTCTAGCTGACAATCTTTTAGAA
CCAACAAGGGTCTCAATGCCACAGAAAAATTTGCTGGAAGTTGCCGTACTCAGTACAGAAGGACAG
ATCCAAGACTTTAAATTTCCCTCTGGGCATCAAAGGAGCAGGCAGCTCAATCCAACGTCCGCAAATACC
GTCAAACAGAACAGCAGGAATGGGCTTGCAAAGTTGGTGTTCATCATTTACCGGAGCCTGGGACAGTTC
CTTAGTACAGAAAATGCAACCATTAAACTGGGTGCTGATTTTATTGGTCGTAATAGCACCATTGCAGTG
AACTCTCACGTCAATTCAGTTTCAATCAATAAAGAGTCCAGCCGAGTATACCTGACTGATCCTGTGCTT
TTTACCCTGCCACACATTGATCCTGACAATTTTCAATGCAAACCTGCTCCTTCTGGAACACTCAGAG
AGA ACTATGATGGGATATTGGTCTACCCAGGGCTGCAAGCTGGTTGACACTAATAAACTCGAACAACG
TGTGCATGCAGCCACCTAACCAATTTTGAATTTCTCATGGCCACAGGAAATTGCATATAAAGATGGC
GTT CATGAATTACTTCTACAGTCATCACCTGGGTGGGAATTGCATTTCCCTTGTTTGCTGGCTATC
TG CATCTTACCTTCTGCTTTTTCCGTGGCCTACAGAGTGACCGAAATACTATTCAAGAACCTTTGT
ATCAACCTTTTTCATTGCTGAATTTATTTTCCCTAATAGGCATTGATAAGACAAAATATGCGATTGCATGC
CCAATATTTG CAGGACTTCTACACTTTTTCTTTTTGGCAGCTTTTGTGGATGTGCCTAGAAGGTGTG
CAGCTCTACCTAATGTTAGTTGAAGTTTTTGAAGTGAATATTCAAGGAAAAATATTACTATGTTGCT
GGTTACTTGTTCCTGCCACAGTGGTTGGAGTTTCAGCTGCTATTGACTATAAGAGCTATGGAACAGAA
AAAGCTTGCTGGCTTCATGTTGATAACTACTTTATATGGAGCTTCATTGGACCTGTTACCTTCATTATT
CTGCTAAATATTATCTTCTTGGTGATCACATTGTGCAAAATGGTGAAGCATTCAAACACTTTGAAACCA
GATTCTAGCAGGTTGAAAAACATTAAGTCTTGGGTGCTTGGCCTTTCCGCTCTTCTGTGCTTCTTGGC
CTCACCTGGTCCCTTGGGTTGCTTTTTTAAATGAGGAGACTATTGTGATGGCATATCTCTTCACTATA
TTAATGCTTTCCAGGGAGTGTTCAATTTTCTCTTTCCTGCTCTCCAAAAGAAAGTACGAAAAGAA
TATGGCAAGTGCTTCAGACACTCATACTGCTGTGGAGGCCTCCCAACTGAGAGTCCCCACAGTTCAGTG
AAGGCATCAACCACCAGAACCAGTGCTCGCTATTCCTCTGGCACACAGAGTCGTATAAGAAGAATGTGG
AATGATACTGTGAGAAAACAATCAGAATCTTCTTTTATCTCAGGTGACATCAATAGCACTTCAACACTT
AATCAAGGACATTCACTGAACAATGCCAGGGATAACAAGTCCATGGATACTCTACCGCTAAATGGTAAT
TTTAAACAAGCTACTCGCTGCACAAGGGTGACTATAATGACAGCGTGCAAGTTGTGGACTGTGGACTA
AGTCTGAATGATACTGCTTTTGAGAAAAATGATCATTTT CAGAATTAGTGCAACAACACTTACGGGGCAGC
AGCAAGACTCACAACTCGAGCTCAGCTACCAGTCAAACCTGTGATTGGAGGTAGCAGCAGTGAAGAT
GATGCTATTGTGGCAGATGCTTCATCTTTAATGCACAGCGACAACCCAGGGCTGGAGCTCCATCACAAA
GAACTCGAGGCACCCTATTCCCTCAGCGGACTCACTCCCTTCTGTACCAACCCAGAAAGTGAAG
TCCGAGGGA ACTGACAGCTATGTCTCCCAACTGACAGCAGAGGGCTGAAGATCACCTACAGTCCCCAAC
AGAGACTCTCTTTATAACAAGCATGCCAACTTTAGAGACTCTCCCTATCCGGAGAGCAGCCCTGACATG
GAAGAAGACCTCTCTCCCTCCAGGAGGAGTGAGAATGAGGACATTTACTATAAAAGCATGCCAAATCTT
GGAGCTGGCCATCAGCTTCAGATGTGCTACCAGATCAGCAGGGCAATAGTGATGGTTATATAATCCCC
ATTAACAAGAAGGGTGTATTCCAGAAGGAGATGTTAGAGAAGGACAAATGCAGCTGGTTACAAGTCTT
ACGCGTACGCGGCCGCTCGAG - GFP Tag - GTTTAAAC

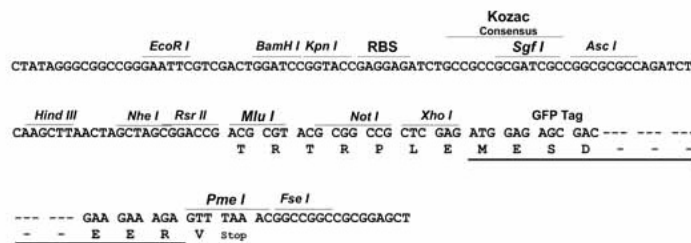
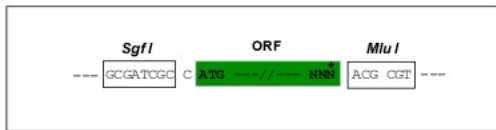
Protein Sequence: >Peptide sequence encoded by RG240131
 Blue=ORF Red=Cloning site Green=Tag(s)

MVSSGCRMRLWFIIIVISFLPNTEGFSRAALPFGLVRRELSCEGYSIDLRCPGSDVIMIESANYGRTDD
 KICDADPFQMENTDCYLPDAFKIMTQRCNNRTQCI VVTGSDVFPDPCPGTYKYLEVQYECVPYIFVCPG
 TLKAI VDSPCIYEA EQKAGAWCKDPLQAADKIYFMPWTPYRTDTLIEYASLEDFQNSRQTTTYKLPNRV
 DGTGFVYVDGAVFFNKERTRNIVKFDLRTRIKSGEAIINYANYHDTSPYRWGGKTDIDLAVDENGLWVI
 YATEQNNGMIVISQLNPYTLRFEATWETVYDKRAASNAFMICGLVYVRSVYQDNESETGKNSIDYIYN
 TRLNRGEYVDVFPFNQYQYIAAVDYNPRDNQLYVWNNFILRYSLEFGPPDPAQVPTTAVITSSAELF
 KTIISTTSTTSQKGMSTTVAGSQEGSKGKTPPPAVSTTKIPPITNIFLPERFCEALDSKGIKWPQTQ
 RGMVVERPCPKGTRGTASYLCMISTGTWNPKGPDLSNCTSHWVNLAQKIRSGENAASLANELAKHTKG
 PVFAGDVSSVRLMEQLVDILDAQLQELKPSEKDSAGRSYNKAI VDTVNDLLRPEALESWKHMNSSEQA
 HTATMLDLEEGAFVLADNLLPTRVSMPTENIVLEVAVLSTEGQIQDFKFLGIKAGGSSIQLSANT
 VKQNSRNLAKLVFIIYRSLGQFLSTENATIKLGADFIGRNSTIAVNSHVISVSINKESSRVYLTDPVL
 FTLPHIDPDNYFNANCSFWNYSERTMMGYWSTQGCKLVDNKRTRTTCACSHLTNFAILMAHREIAYKDG
 VHELLLTVITWVGIVISLVCLAICIFTFCFRGLQSDRNTIHKNL CINLFAEFIFLIGIDKTKYAIAC
 PIFAGLLHFFFLAAFAMCLEGVQLYMLVEVFESEYSRKYYYYAGYLPFATVVGVSAAIDYKSYGTE
 KACWLHVDNYFIWSFIGPVTFIILLNIIFLVITLCKMVKHSNTLKPSSRLENIKSWVLGAFALLCLLG
 LTWSFGLLFINETIVMAYLFTIFNAFQGVFIFIFHCALQKKVRKEYGKCFRHSYCCGGLPTESPSSV
 KASTTRTSARYSSGTQSRIRRMWNTVRKQSESSFISGDINSTL NQGHSLNNARDTSAMDTLPLNGN
 FNNSYSLHKGDYNDVSVQVVDGCLSLNDTAFEKMIISELVHNNLRGSSKTHNLEL TLPVKPVI GGSSSED
 DAIVADASSLMHSDNPGLELHHKELEAPLIPQRTHSLLYQPQKKVKSEGTD SYVSQLTAEADHLQSPN
 RDSL YTSMPNLRD SPYPESSPDMEEDLSPSRSENEDIYK SMPNLGAGHQLQMCYQISRGNSDGYIIP
 INKEGCIPREGDVREGMQLVTSL
 TRTRPLEMEDESGLPAMEIECRITGTLNGVEFELVGGGEGTPEQGRMTNKMSTKGALTFSPYLLSHV
 MGYGFYHFGTYPSTYENPFLHAINNGGYNTRIEKYEDGGVLHVSFSYRYEAGRVIGDFKVMGTGFPEP
 SVIFTDKIIIRSNATVEHLHPMGDNDLDG SFTRTFSLRDGGYSSVVD SHMHFKSAIHPSILQNGGPMFA
 FRRVEEDHSNTELGIVEYQHAFKTPDADAGEERV

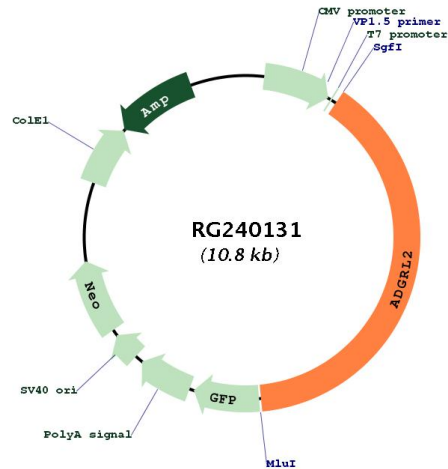
Restriction Sites: SgfI-MluI

Cloning Scheme:

Cloning sites used for ORF Shutting:



Plasmid Map:



ACCN: NM_001297704

ORF Size: 4209 bp

OTI Disclaimer: The molecular sequence of this clone aligns with the gene accession number as a point of reference only. However, individual transcript sequences of the same gene can differ through naturally occurring variations (e.g. polymorphisms), each with its own valid existence. This clone is substantially in agreement with the reference, but a complete review of all prevailing variants is recommended prior to use. [More info](#)

OTI Annotation: This clone was engineered to express the complete ORF with an expression tag. Expression varies depending on the nature of the gene.

Components: The ORF clone is ion-exchange column purified and shipped in a 2D barcoded Matrix tube containing 10ug of transfection-ready, dried plasmid DNA (reconstitute with 100 ul of water).

RefSeq: [NM_001297704.2](#)

RefSeq Size:	5986 bp
RefSeq ORF:	4212 bp
Locus ID:	23266
UniProt ID:	<u>O95490</u>
Cytogenetics:	1p31.1
Protein Families:	Druggable Genome, GPCR, Transmembrane
MW:	157.6 kDa
Gene Summary:	<p>This gene encodes a member of the latrophilin subfamily of G-protein coupled receptors. The encoded protein participates in the regulation of exocytosis. The proprotein is thought to be further cleaved within a cysteine-rich G-protein-coupled receptor proteolysis site into two chains that are non-covalently bound at the cell membrane. Alternative splicing results in multiple transcript variants. [provided by RefSeq, Jul 2014]</p>