

Product datasheet for **RG240124**

KIAA1199 (CEMIP) (NM_001293304) Human Tagged ORF Clone

Product data:

Product Type:	Expression Plasmids
Product Name:	KIAA1199 (CEMIP) (NM_001293304) Human Tagged ORF Clone
Tag:	TurboGFP
Symbol:	CEMIP
Synonyms:	CCSP1; HYBID; KIAA1199; TMEM2L
Mammalian Cell Selection:	Neomycin
Vector:	pCMV6-AC-GFP (PS100010)
E. coli Selection:	Ampicillin (100 ug/mL)
ORF Nucleotide Sequence:	>RG240124 representing NM_001293304. Blue=ORF Red=Cloning site Green=Tag(s)

```
GCTCGTTTGTAGTGAACCGTCAGAATTTGTAAATACGACTACTATAGGGCGCCGGGAATTCGTGACTG
GATCCGGTACCGAGGAGATCTGCCGCCGCGATCGCC
ATGGGAGCTGCTGGGAGGCAGGACTTCTCTTCAAGGCCATGCTGACCATCAGCTGGCTCACTCTGACC
TGCTTCCCTGGGGCCACATCCACAGTGGCTGCTGGGTGCCCTGACCAGAGCCCTGAGTTGCAACCCCTGG
AACCCCTGGCCATGACCAAGACCACCATGTGCATATCGGCCAGGGCAAGACTGCTGCTCACCTCTTCT
GCCACGGTCTATCCATCCACATCTCAGAGGGAGGCAAGCTGGTCATTAAGACCACGACGACGACCGATT
GTTTTGCGAACCCGGCACATCCTGATTGACAACGGAGGAGAGCTGCATGCTGGGAGTGCCCTCTGCCCT
TTCCAGGGCAATTCACCATCATTTTGTATGGAAGGGCTGATGAAGGTATTCAGCCGGATCCTTACTAT
GGTCTGAAGTACATTGGGGTTGGTAAAGGAGGCGCTCTTGAGTTGCATGGACAGAAAAAGCTCTCCTGG
ACATTTCTGAACAAGACCCTTACCCAGGTGGCATGGCAGAAGGAGGCTATTTTTTTGAAAGGAGCTGG
GGCCACCGTGGAGTTATTGTTTATGTCATCGACCCCAAATCAGGCACAGTCATCCATTCTGACCGGTTT
GACACCTATAGATCCAAGAAAGAGAGTGAACGTCTGGTCCAGTATTTGAACGCGGTGCCCGATGGCAGG
ATCCTTTCTGTTGCAGTGAATGATGAAGTTCTCGAAATCTGGATGACATGGCCAGGAAGGCGATGACC
AAATTGGGAAGCAAACACTTCTGCACCTTGGATTTAGACACCCTGGAGTTTCTAACTGTGAAAGGA
AATCCATCATCTTCAGTGAAGACCATATTGAATATCATGGACATCGAGGCTCTGCTGCTGCCCGGTA
TTCAAATTGTTCCAGACAGAGCATGGCGAATATTTCAATGTTTCTTTGTCCAGTGAAGTTTCAAGAC
GTGGAGTGGACGGAGTGGTTCGATCATGATAAAGTATCTCAGACTAAAGGTGGGGAGAAAAATTCAGAC
CTCTGAAAGCTCACCCAGGAAAAATATGCAATCGTCCCATTGATATACAGGCCACTACAATGGATGGA
GTTAACCTCAGCACCGAGGTTGCTACAAAAAAGGCCAGGATTATAGGTTTGCTTGTACGACCGGGGC
AGAGCCTGCCGGAGCTACCGTGTACGGTTCCTCTGTGGGAAGCCTGTGAGGCCCAAACCTCACAGTCACC
ATTGACACCAATGTGAACAGCACCATTCTGAACCTGGAGGATAATGTACAGTCATGGAAACCTGGAGAT
ACCCTGGTCATTGCCAGTACTGATTACTCCATGTACCAGGCAGAAGAGTTCAGGTGCTTCCCTGCAGA
TCCTGCGCCCCAACAGGTCAAAGTGGCAGGGAACCAATGTACCTGCACATCGGGGAGGAGATAGAC
GGCGTGGACATGCGGGCGGAGGTTGGGCTTCTGAGCCGGAACATCATAGTGATGGGGGAGATGGAGGAC
```



[View online »](#)

AAATGCTACCCCTACAGAAACCACATCTGCAATTTCTTTGACTTCGATACCTTTGGGGGCCACATCAAG
TTTGCTCTGGGATTTAAGGCAGCACACTTGGAGGGCACGGAGCTGAAGCATATGGGACAGCAGCTGGTG
GGTCAGTACCCGATTCACTTCCACCTGGCCGGTATGTAGACGAAAGGGGAGTTATGACCCACCCACA
TACATCAGGGACCTCTCCATCCATACATATTCTCTCGCTGCGTCACAGTCCATGGCTCCAATGGCTTG
TTGATCAAGGACGTTGTGGGCTATAACTCTTTGGGCCACTGCTTCTTACGGAAGATGGGCCGGAGGAA
CGCAACTTTTGACCACTGTCTTGGCCCTCTTGTCAAGTCTGGAACCTCCTCCCTCGGACCGTGAC
AGCAAGATGTGCAAGATGATCACAGAGGACTCCTACCCGGGTACATCCCAAGCCAGGCAAGACTGC
AATGCTGTGTCCACCTTCTGGATGGCCAATCCCAACAACCTCATCAACTGTGCCGCTGCAGGATCT
GAGGAACTGGATTTTGGTTATTTTTACCACGTACCAACGGGCCCTCCGTGGGAATGTACTCCCA
GGTTATTCAGAGCACATTCCTACTGGGAAAATTCTATAACAACCGAGCACATTCCAACCTACGGGGCTGGC
ATGATCATAGACAACGGAGTCAAACCACCGAGGCCTCTGCCAAGGACAAGCGGCCGTTCTCTCAATC
ATCTCTGCCAGATACAGCCCTACCAGGACGCCGACCCGCTGAAGCCCCGGGAGCCGGCCATCATCAGA
CACTTCATTGCCTACAAGAACCAGGACCACGGGGCTGGCTGCGCGGGGGATGTGTGGCTGGACAGC
TGCCGGTTTGTGACAATGGCATTGGCCTGACCCTGGCCAGTGGTGAACCTTCCCGTATGACGACGGC
TCCAAGCAAGAGATAAAGAACAGCTTGTGTGGCGAGAGTGGCAACGTGGGGACGAAATGATGGAC
AATAGGATCTGGGGCCCTGGCGGCTTGGACCATAGCGGAAGGACCTCCCTATAGGCCAGAAATTTCCA
ATTAGAGGAATTCAGTTATATGATGGCCCCATCAACATCCAAAACCTGCACCTTCCGAAAGTTTGGGCC
CTGGAGGGCCGGCACACCAGCGCCCTGGCCTTCCGCTGAATAATGCCTGGCAGAGCTGCCCCATAAC
AACGTGACCGGCATTGCCTTTGAGGACGTTCCGATTACTTCCAGAGTGTCTTTCGGAGAGCTGGGCC
TGGTTCAACCAGCTGGACATGGATGGGGATAAGACATCTGTGTTCCATGACGTCGACGGCTCCGTGTCC
GAGTACCCTGGCTCTACCTCACGAAGAATGACAACTGGCTGGTCCGGCACCCAGACTGCATCAATGTT
CCCGACTGGAGAGGGCCATTTGCAGTGGGTGCTATGCACAGATGTACATTCAAGCCTACAAGACCAGT
AAGCTGCGAATGAAGATCATCAAGAATGACTTCCCAGCCACCCTTTTACCTGGAGGGGGCGCTCACC
AGGAGCACCCATTACCAGCAATACCAACCGGTTGTCAACCTGCAGAAGGGCTACACCATCCACTGGGAC
CAGACGGCCCCCGCAACTCGCCATCTGGCTCATCAACTTCAACAAGGGCGACTGGATCCGAGTGGGG
CTCTGCTACCCGCGAGGCACCACATTCTCCATCCTCTCGGATGTTCACAATCGCCTGCTGAAGCAAACG
TCCAAGACGGGCGTCTTCGTGAGGACCTTGAGATGGACAAAGTGGAGCAGAGCTACCCTGGCAGGAGC
CACTACTACTGGGACGAGGACTCAGGGCTGTTGTTCTGAAGCTGAAAGCTCAGAACGAGAGAGAGAAG
TTTGCTTTCTGCTCCATGAAAGGCTGTGAGAGGATAAAGATTAAGCTCTGATTCCAAAGAACGCAGGC
GTCAGTGACTGCACAGCCACAGCTTACCCCAAGTTCACCGAGAGGGCTGTCGTAGACGTGCCGATGCCC
AAGAAGCTCTTTGTTCTCAGCTGAAAACAAGGACCATTCTTGGAGGTGAAGATGGAGAGTTCGAAG
CAGCACTTCTCCACCTCTGGAACGACTTCGCTTACATTGAAGTGGATGGGAAGAAGTACCCAGTTTCG
GAGGATGGCATCCAGGTGGTGGTATTGACGGGAACCAAGGGCGCGTGGTGGAGCCACACGAGCTTCAAG
AACTCCATTCTGCAAGGCATACCATGGCAGCTTTTCAACTATGTGGCGACCATCCCTGACAAATCCATA
GTGCTTATGGCATCAAAGGGAAGATACGCTCCAGAGGCCATGGACCAGAGTGTGGAAAAGCTTGGG
GCAGACAGGGGTCTCAAGTTGAAAGAGCAAATGGCATTGCTTGGCTTCAAAGGCAGCTTCCGGCCATC
TGGGTGACACTGGACACTGAGGATCACAAAGCCAAAATCTTCAAAGTTGTGCCATCCCTGTGGTGAAG
AAGAAGAAGTTG

ACGCGTACGCGGCCGCTCGAG - GFP Tag - GTTAAAC

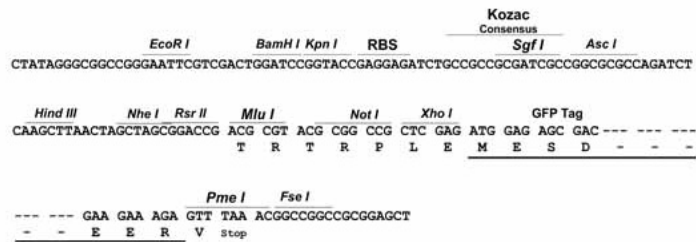
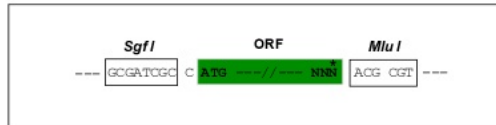
Protein Sequence: >Peptide sequence encoded by RG240124
 Blue=ORF Red=Cloning site Green=Tag(s)

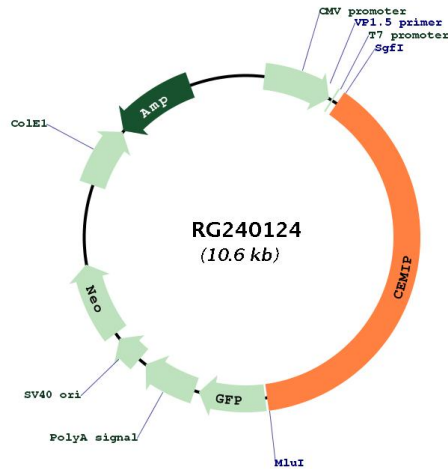
MGAAGRQDFLFKAMLTISWLTLCFPGATSTVAAGCPDQSPQLPWNPGHDQDHHVHIGQGKTLTLLTSS
 ATVYSIHISEGGKLVIKDHDEPVLRRTRHILIDNGGELHAGSALCPFQGNFTIILYGRADEGIQDPYY
 GLKYIGVKGGALELHGQKKLSWTFLNKTLHPGGMAEGGYFFERSWGHGVIHVHIDPKSGTVIHSDRF
 DTYRSKKESERLVQYLNAVDPGRILSVAVNDEGSRNLDMMARKAMTKLGSKHFLHLGFRHPWSFLTVKG
 NPSSSVEDHIEYHGHRGSAARVFKLFQTEHGEYFNVSLSEEWVQDVEWTEWFDHDKVSQTKGGEKISD
 LWKAHPGKICNRPIDIQATTMDGVNLSDEVVYKKGQDYRFACYDRGRACRSYRVRFVCGKPVPRKLTVT
 IDTNVNSTILNLEDNVQSWKPGDVLVIASDYSMYQAEFQVLPSCRSCAPNQVAVAGKPMYHLHIGEEID
 GVDMAEVGLLSRNIIVMGEMEDKCYPRNHICNFFDFDFTGGHIKFFALGFKAAHLEGETLKHMQQLV
 GQYPIHFHLAGDVDERGGYDPPTYIRDLSIHHTFSRCVTVHGSNGLLIKDVVGYNSLGHCFEEDGPPE
 RNTFDHCLGLLVKSGTLLPSDRDSKMCKMITEDSYPGYIPKPRQDCNAVSTFWMANPNLNLINCAAAGS
 EETGFWFIHHVPTGPSVGMSPGYSEHIPLGKFYNNRAHSNYRAGMIIDNGVKTTEASAKDKRPFISI
 ISARYSPHQADPLKPREPAIRHFIAYKNQDHGAWLRGGDVWLDSCRFDANGIGLTLASGGTFPYDDG
 SKQEIKNSLVFGESENVGTEMMDNRIWGPGLDHSGRTPIGQNFPIRGIQLYDGPINIQNCTFRKFVA
 LEGRHTSALAFRLNNAWQSCPHNNVTGIAFEDVPIITSRVFFGEPGPWFNQLDMDGDKTSVFHDVDSVS
 EYPGSLTKNDNWLVRHPDCINVPDWRGAICSGCYAQMYIQAYKTSNLRMKIKNDFPSHPLYLEGALT
 RSTHYQQYQPVVTLQKGYTIHWDQTAPAEIAIWLINFNKGDWIRVGLCYPRGTTFSILSDVHNRLKQT
 SKTGVFVRTLQMDKVEQSYPRSHYYWDEDSGLLFLKKAQNEREKFAFCSMKGCERIKIKALIPKNAG
 VSDCTATAYPKFTERAVDVMPKPLFGSQLKTKDHFLEVKMESSKHQHFHFLWDFAYIEVDGKKYPSS
 EDGIQVVVIDGNQGRVVSHTSFRNSILQGIWQLFNYVATIPDNSIVLMSKGRVSRGPWTRVLEKLG
 ADRGLKLEQMAFVGFKGSFRPIWVTLDTEDHKAKIFQVVPVPIPVVKKKKL
TRTRPLEMESDESGLPAMEIECRITGTLNGVEFELVGGEGTPEQGRMTNKMSTKGALTFSPYLLSHV
 MGYGFYHFGTYPSTYENPFLHAINNGGYNTRIEKYEDGGVLHVSFSYRYEAGRVIIGDFKVMGTGFPED
 SVIFTDKIIRSNAVHFLHPMGDNDLDGSFTRTFSLRDGGYSSVVDSHMFKSAIHPSILQNGGPMFA
 FRRVEEDHSNTELGIVEYQHAFKTPDADAGEERV

Restriction Sites: SgfI-MluI

Cloning Scheme:

Cloning sites used for ORF Shutting:



Plasmid Map:


ACCN: NM_001293304

ORF Size: 4083 bp

OTI Disclaimer: The molecular sequence of this clone aligns with the gene accession number as a point of reference only. However, individual transcript sequences of the same gene can differ through naturally occurring variations (e.g. polymorphisms), each with its own valid existence. This clone is substantially in agreement with the reference, but a complete review of all prevailing variants is recommended prior to use. [More info](#)

OTI Annotation: This clone was engineered to express the complete ORF with an expression tag. Expression varies depending on the nature of the gene.

Components: The ORF clone is ion-exchange column purified and shipped in a 2D barcoded Matrix tube containing 10ug of transfection-ready, dried plasmid DNA (reconstitute with 100 ul of water).

RefSeq: [NM_001293304.2](#)

RefSeq Size: 7227 bp

RefSeq ORF: 4086 bp

Locus ID: 57214

UniProt ID: [Q8WUJ3](#)

Cytogenetics: 15q25.1

MW: 153.4 kDa

Gene Summary:

Mediates depolymerization of hyaluronic acid (HA) via the cell membrane-associated clathrin-coated pit endocytic pathway. Binds to hyaluronic acid. Hydrolyzes high molecular weight hyaluronic acid to produce an intermediate-sized product, a process that may occur through rapid vesicle endocytosis and recycling without intracytoplasmic accumulation or digestion in lysosomes. Involved in hyaluronan catabolism in the dermis of the skin and arthritic synovium. Positively regulates epithelial-mesenchymal transition (EMT), and hence tumor cell growth, invasion and cancer dissemination. In collaboration with HSPA5/BIP, promotes cancer cell migration in a calcium and PKC-dependent manner. May be involved in hearing. [UniProtKB/Swiss-Prot Function]