

## Product datasheet for **RG240106**

### **NEDD4 (NM\_001284338) Human Tagged ORF Clone**

#### Product data:

Product Type:	Expression Plasmids
Product Name:	NEDD4 (NM_001284338) Human Tagged ORF Clone
Tag:	TurboGFP
Symbol:	NEDD4
Synonyms:	NEDD4-1; RPF1
Mammalian Cell Selection:	Neomycin
Vector:	pCMV6-AC-GFP (PS100010)
E. coli Selection:	Ampicillin (100 ug/mL)
ORF Nucleotide Sequence:	>RG240106 representing NM_001284338. Blue=ORF Red=Cloning site Green=Tag(s)

```
GCTCGTTTGTAGAACCGTCAGAATTTTGTAAACGACTCACTATAGGGCGGCCGGGAATTCGTCGACTG
GATCCGGTACCGAGGAGATCTGCCGCCCGGATCGCC
ATGGCACAAAGCTTACGATTGCACTTTGCAGCCAGAAGAAGCAATACTTACCCTTTGTCAGAAAACCTCC
GGAGATGACTTGGATAGCCATGTTACATGTGCTTCAAAGACCAACACGGATTTCAACGCTAACGTT
GTTCAAATGAAGCTGACTCCAGACAGACTGCACTAGCTCCGTTAATAAAGGAAAACGTTCACTCTCAA
GAAAGATCATCTGTTCCCTCATCTGAAAATGTTAATAAAAAGAGCAGCTGTCTACAGATTTCACTACAG
CCAACAAGGTACAGTGGATATCTTCAGTCTAGCAATGTCTTAGCTGATAGTGATGATGCTTCGTTACT
TGTATCTTGAAGGATGGTATTTACAGTAGTGTGTGGTCGATAATGAATTGAATGCTGTGAATGATGGT
CACCTTGTAAAGCAGTCCAGCCATTTGTAGTGGTAGCCTTAGTAACTTTTCAACCAGTGATAATGGTCT
TACAGCAGCAACGGTAGTGATTTTGGGTCATGTGCAAGTATCACAAAGTGGAGGTTTCACTAACAGT
GTCATCAGTGACAGTAGTAGTTACTTTTCCACCAAGTATGATACTTTTTTGGGTGGAACCTTACCT
TCTGACAGCACCTCCAATAGAAGTGTGCCAAACAGGAATACTACTCCTTGTGAAATTTTTTCAAGAAGT
ACAAGTACAGATCCTTTTGTCCAGGATGACTTGGAAACATGGATTAGAGATTATGAAATGGCCAGTGAGC
AGGAACACAAAAATCCACTAAAACGTTACTCCTCCTTAGTCATTTTTCTAGGAGTCTTCAACTACC
CGACCGACTTCTCCAACAAGTCTGTGACTCTTCTGAGCAAAGGATCCTATCAAACCTCACACCAGTTT
ATTATTTCTCCTAGTAAAATTGCACATAATGAGGATGGCACTAGTGCTAAAGGATTTCTTTCAACAGCT
GTCAATGGACTTCGGTTATCTAAAACAATTTGTACCCCGGAGAAGTAAGAGACATACGGCCGCTTAC
AGGAAGGGCTCGTTACAGAAGAAAATTGTTCTTTTGAATAATACTCCAGACAGACTGTCTGTGAAAAG
TCATCTGAAGGATATTCTGTGTTTCACTGCAATTTACCCAACGAAAAGCAGCTACATTAGACTGTGAA
ACAACAAATGGTATTGTAACCCAGAAATGTCAGAAATTAAGCTTAATTCTGATTCAGAGTATATTAAG
CTCATGCATAGGACATCTGCATGTTTGGCCATCTCCCAAATGTAGATTGCAAATAAATATCAATGGA
GAATTGGAAGACCACATTCACAGATGAACAAAAACCATGGTATTTTACGAAGAAGTATTTTATTGGGA
GGAGCTTATCAAATATTTCTGTCTATCCAGCCTTAAGCACAATTGTTCTAAAGGGGGACCATCTCAG
TTACTCATAAAGTTTGCATCTGAAATGAAGGTAAGTGGATAATTTATCAAGAGACAGCAACAGAGAT
```



[View online >](#)

TGCACAAATGAACTGTCTAATTCTTGAAGACAAGAGATGATTTCTAGGTCAAGTGGATGTTCCACTT  
TATCCATTACCGACAGAAAATCCAAGATTGGAGAGACCATATACATTTAAGGATTTTGTCTTCATCCA  
AGAAGTCACAAATCAAGAGTTAAAGGTTATCTGAGACTAAAAATGACTTATTTACCTAAAACAGTGGC  
TCAGAAGATGATAATGCAGAACAGGCTGAGGAATTAGAGCCTGGCTGGGTTGTTTTGGACCAACCAGAT  
GCTGCTTGCCATTTGCAGCAACAACAAGAACCTTCTCCTACCTCCAGGGTGGGAAAGAGAGGCAGGAT  
ATCCTTGGAAAGGACCTATTATGTAACCATGAATCTAGAAGAACACAGTGGAAAAAGACCAACCCCTCAG  
GACAACCTAACAGATGCTGAGAATGGCAACATTCACCTGCAAGCACAACGTGCATTTACCACCAGGCGG  
CAGATATCCGAGGAAACAGAAAAGTGTGACAACCGAGAGTCTCCGAGAACTGGGAAATTAAGAGAA  
GATGAAGCCACCATGTATAGCAACCAGGCTTCCCATCACCTCCACCGTCAAGTAACTTGGATGTTCCA  
ACTCATCTTGAGAAGAATTGAATGCCAGACTCACCATTTTTGGAAATTCAGCCGTGAGCCAGCCAGCA  
TCGAGCTCAAAATCATTCCAGCAGAAGAGGCAGCTTACAAGCCTATACTTTTGAGGAACAACCTACACTT  
CCTGTGCTTTTGCTACTTCATCTGGATTACCACCAGGTTGGGAAGAAAAACAAGATGAAAGAGGAAGA  
TCATATTATGTAGATCACAATCCAGAACGACTACTTGGACAAAGCCACTGTACAGGCCACAGTGGAG  
ACCAGTCAGCTGACCTCAAGCCAGAGTTCTGCAGGCCCTCAATCACAAGCCTCCACCAGTATTGAGGC  
CAGCAGGTGACCCAGCCATCTGAAATTGAGCAAGGATTCTTCTAAAGGCTGGGAAAGTCCGGCATGCA  
CCAAATGGGAGGCTTTCTTTATTGACCACAACACTAAAACACCACCTGGGAAGATCCAAGATTGAAA  
ATTCCAGCCCATCTGAGAGGAAAGACATCACTTGATACTTCCAATGATCTAGGGCCTTTACCTCCAGGA  
TGGGAAGAGAGAACTCACACAGATGGAAGAATCTTCTACATAAATCACAATATAAAAAAGACACAATGG  
GAAGATCCTCGGTTGGAGAATGTAGCAATAACTGGACCAGCAGTGCCTACTCCAGGGATTACAAAAAGA  
AAGTATGAGTTCTTCCGAAGAAAGTTGAAGAAGCAGAATGACATTCCAACAAAATTTGAAATGAACTT  
CGCCGAGCAACTGTTCTTGAAGACTCTTACCGGAGAATTATGGGTGTCAAGAGAGCAGACTTCTGAAG  
GCTCGACTGTGGATTGAGTTTGATGGTGAAGGGATTGGATTATGGAGGAGTTGCCAGAGAATGGTTC  
TTCCTGATCTCAAAGGAAATGTTTAAACCCTTATTATGGGTTGTTTGAATATTCTGCTACGGACAATTAT  
ACCCTACAGATAAATCCAAACTCTGGATTGTGTAAACGAAGATCACCTCTTACTTCAAGTTTATTGGT  
CGGGTAGCTGGAATGGCAGTTTATCATGGCAAACCTGTTGGATGGTTTTTTCATCCGCCCATTTTACAAG  
ATGATGCTTCACAAACCAATAACCCCTCATGATATGGAATCTGTGGATAGTGAATATTACAATTCCTTA  
AGATGGATTCTTGAAAATGACCCAACAGAATTGGACCTCAGGTTTATCATAGATGAAGAATTTTTGGA  
CAGACACATCAACATGAGCTGAAAAATGGTGGATCAGAAATAGTTGTACCAATAAGAACAAAAAGGAA  
TATATTTATCTTGAATACAATGGCGATTTGTAACCGAATCCAGAAGCAAATGGCTGCTTTTAAAGAG  
GGATTCTTTGAACTAATACCACAGGATCTCATCAAAATTTTTGATGAAAATGAACTAGAGCTTCTTATG  
TGTGGACTGGGAGATGTTGATGTGAATGACTGGAGGGAACATACAAAGTATAAAAAATGGCTACAGTGCA  
AATCATCAGGTTATACAGTGGTTTTGGAAGGCTGTTTTAATGATGGATTCAGAAAAAAGAATAAGATTA  
CTTCAGTTTGTACTGGCACATCTCGGGTGCCTATGAATGGATTTGCTGAACTATACGGTTCAAATGGA  
CCACAGTCATTTACAGTTGAACAGTGGGGTACTCCTGAAAAGCTGCCAAGAGCTCATACCTGTTTTAAT  
CGCCTGGACTTGGCACCTTATGAATCATTTGAAGAATTATGGGATAAACTTCAGATGGCAATTGAAAA  
ACCCAGGGCTTTGATGGAGTTGAT

ACCGGTACGCGGCCGCTCGAG - GFP Tag - GTTAAAC

**Protein Sequence:** >Peptide sequence encoded by RG240106  
 Blue=ORF Red=Cloning site Green=Tag(s)

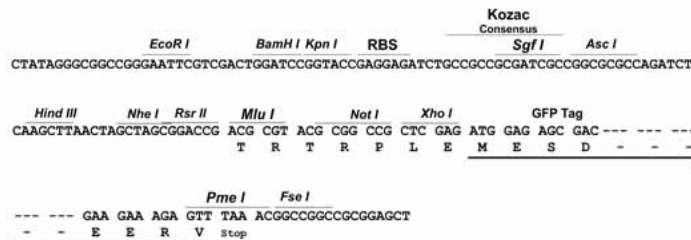
MAQSLRLHFAARRSNTYPLSETSGDDLDSHVHMCFKRPTRISTSNVVQMKLTPRQTALAPLIKENVQSQ  
 ERSSVPSSENVNKKSSCLQISLQPTRYSGLQSSNVLADSDAFTCILKDKGIYSSAVVDNELNAVNDG  
 HLYSSPAICSGSLSNFSTSDNGSYSSNGSDFGSCASITSGGSYTNVSISSSYTFPPSDDTFLGGNLP  
 SDSTSNRSVPNRNTTPCEIFSRSTSTDPFVQDDLEHGLEIMKLPVSRNTKIPLKRYSSLVIFPRSPSTT  
 RPTSPTSLCTLLSKGSYQTSHQFIISPSEIAHNEDGTSAGFLSTAVNGLRLSKTICTPGEVRDIRPLH  
 RKGSLQKKIVLSNNTPRQTVCEKSSEGYSCVSVHFTQRKAATLDCETTNGDCKPEMSEIKLNSDSEYIK  
 LMHRTSACLPSQNVDCQININGELERPHSQMKNKHGILRRSISLGGAYPNISCLSSLKHNCCKGGPSQ  
 LLIKFASGNEGKVDNLSRDSNRDCTNELSNSCKTRDDFLGQVDVPLYPLPTENPRLERPYTFKDFVLP  
 RSHKSRVKGYLRLKMTYLPKTSGEDDNAEQAEELPGWVVDQPDAAACHLQQQEPSPPLPPGWEERQD  
 ILGRTYVNHESRRTQWKRPTQDNLDAENGIQLQAQRAFTTRRQISEETESVDNRESSENWEIIRE  
 DEATMYSNQAFSPSSNLDPVTHLAELNARLTIFGNSAVSQPASSNHSSRRGSLQAYTFEEQPTL  
 PVLLPTSSGLPPGWEEKQDERGRSYVDHNSRTTWTWKPTVQATVETSQTLSSQSSAGPQSQASTSDSG  
 QQVTQPSEIEQGFLPKGWEVRHAPNGRPFIDHNTKTTTWPEDRLKIPALHRGKTSLDTSNDLGPLPPG  
 WEERTHTDGRIFYINHNIKRTQWEDPRLENVAITGPAVPYSRDYKRKYEFFRRKLLKQNDIPNKFEMKL  
 RRATVLEDSYRRIMGVKRAFLLKARLWIEFDGEKGLDYGGVAREWFFLISKEMFNPHYGLFEYSATDNY  
 TLQINPNSGLCNEDHLSYFKFGRVAGMAVYHGKLLDGGFIRPFYKMLLHKPITLHDMESVDSEYNSL  
 RWILENDPTELDLRFIDEELFGQTHQHELKNGGSEIVVTNKNKKEYIYLVIQWRFVNRIQKQMAAFKE  
 GFFELIPQDLIKIFDENELLEMCGLGDVDVNDWREHTKYKNGYSANHQVIQWFWKAVLMMDESEKIRL  
 LQFVTGTSRVPMMNGFAELYGNGPQSFTVEQWGTPEKLPRAHTCFNRLDLPPYESFEELWDLQMAIEN  
 TQGFDDVD

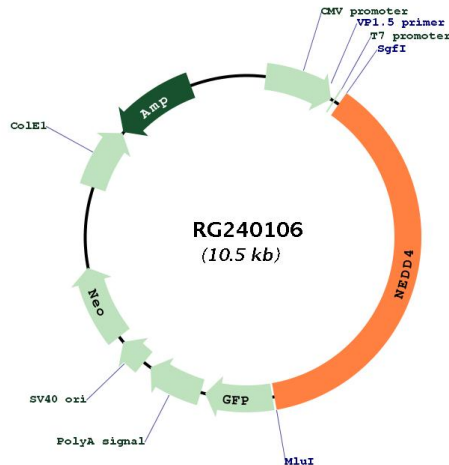
**TRTRPLEMESDESGLPAMEIECRITGTLNGVEFELVGGEGTPEQGRMTNKMSTKGALTFSPYLLSHV**  
**MGYGFYHFGTYPSTYENPFLHAINNGGYNTRIEKYEDGGVLHVSFSYRYEAGRVIGDFKVMGTGFPED**  
**SVIFTDKIIRSNAIVEHLHPMGDNDLDGSFTRTFSLRDGGYSSVVDSHMHFKSAIHPSILQNGGPMFA**  
**FRRVEEDHSNTELGIVEYQHAFKTPDADAGEERV**

**Restriction Sites:** SgfI-MluI

**Cloning Scheme:**

Cloning sites used for ORF Shutting:



**Plasmid Map:**


**ACCN:** NM\_001284338

**ORF Size:** 3957 bp

**OTI Disclaimer:** The molecular sequence of this clone aligns with the gene accession number as a point of reference only. However, individual transcript sequences of the same gene can differ through naturally occurring variations (e.g. polymorphisms), each with its own valid existence. This clone is substantially in agreement with the reference, but a complete review of all prevailing variants is recommended prior to use. [More info](#)

**OTI Annotation:** This clone was engineered to express the complete ORF with an expression tag. Expression varies depending on the nature of the gene.

**Components:** The ORF clone is ion-exchange column purified and shipped in a 2D barcoded Matrix tube containing 10ug of transfection-ready, dried plasmid DNA (reconstitute with 100 ul of water).

**RefSeq:** [NM\\_001284338.2](#)

**RefSeq Size:** 7240 bp

**RefSeq ORF:** 3960 bp

**Locus ID:** 4734

**UniProt ID:** [P46934](#)

**Cytogenetics:** 15q21.3

**Protein Families:** Druggable Genome

**Protein Pathways:** Endocytosis, Ubiquitin mediated proteolysis

**MW:** 149.6 kDa

**Gene Summary:**

This gene is the founding member of the NEDD4 family of HECT ubiquitin ligases that function in the ubiquitin proteasome system of protein degradation. The encoded protein contains an N-terminal calcium and phospholipid binding C2 domain followed by multiple tryptophan-rich WW domains and, a C-terminal HECT ubiquitin ligase catalytic domain. It plays critical role in the regulation of a number of membrane receptors, endocytic machinery components and the tumor suppressor PTEN. [provided by RefSeq, Jul 2016]