

Product datasheet for **RG240092**

MRP4 (ABCC4) (NM_001301829) Human Tagged ORF Clone

Product data:

| | |
|---------------------------|--|
| Product Type: | Expression Plasmids |
| Product Name: | MRP4 (ABCC4) (NM_001301829) Human Tagged ORF Clone |
| Tag: | TurboGFP |
| Symbol: | ABCC4 |
| Synonyms: | MOAT-B; MOATB; MRP4 |
| Mammalian Cell Selection: | Neomycin |
| Vector: | pCMV6-AC-GFP (PS100010) |
| E. coli Selection: | Ampicillin (100 ug/mL) |
| ORF Nucleotide Sequence: | >RG240092 representing NM_001301829. Blue=ORF Red=Cloning site Green=Tag(s) |

```
GCTCGTTTGTAGTGAACCGTCAGAATTTTGTAAACGACTCACTATAGGGCGGCCGGGAATTCGTCGACTG
GATCCGGTACCGAGGAGATCTGCCGCCGCGATCGCC
ATGCTGCCCGTGTACCAGGAGGTGAAGCCCAACCCGCTGCAGGACGCGAACCTCTGCTCACGCGTGTTC
TTCTGGTGGCTCAATCCCTTGTTTAAAATTGGCCATAAACGGAGATTAGAGGAAGATGATATGATTCA
GTGCTGCCAGAAGACCGCTCACAGCACCTTGGAGAGGAGTTGCAAGGGTCTGGGATAAAGAAGTTTTA
AGAGCTGAGAATGACGCACAGAAGCCTTCTTTAACAGAGCAATCATAAAGTGTACTGGAAATCTTAT
TTAGTTTTGGGAATTTTACGTTAATTGAGGAAAGTGCCAAAGTAAATCCAGCCCATATTTTTGGGAAAA
ATTATTAATTATTTGAAAATTATGATCCCATGGATTCTGTGGCTTTGAACACAGCGTACGCCTATGCC
ACGGTGTGACTTTTTGCACGCTCATTTTGGCTATACTGCATCACTTATATTTTTATCACGTTCACTGT
GCTGGGATGAGGTTACGAGTAGCCATGTGCCATATGATTTATCGGAAGGCACTTCGTCTTAGTAACATG
GCCATGGGGAAGACAACCACAGGCCAGATAGTCAATCTGCTGTCCAATGATGTGAACAAGTTTGATCAG
GTGACAGTGTCTTACACTTCTGTGGGACGACCACTGCAGGCGATTGCAGTACTGCCCTACTCTGG
ATGGAGATAGGAATATCGTGCCTTGTGGGATGGCAGTTCTAATCATTCTCCTGCCCTTGCAAAGCTGT
TTTGGGAAGTTGTTCTCATCACTGAGGAGTAAAAGTCAACTTTCACGGATGCCAGGATCAGGACCATG
AATGAAGTTATAACTGGTATAAGGATAATAAAAATGTACGCCTGGGAAAAGTCATTTTCAAATCTTATT
ACCAATTTGAGAAAGAAGGAGATTTCCAAGATTCTGAGAAGTTCTGCTGCTCAGAGGGATGAATTTGGCT
TCATTTTTCAGTGCAAGCAAAATCATCGTGTGTTGTGACCTTACCACCTACGTGCTCCTCGGCAGTGTG
ATCACAGCCAGCCGCGTGTTCGTGGCAGTGACGCTGTATGGGGCTGTGCGGCTGACGTTACCCTCTTC
TTCCCCTCAGCCATTGAGAGGGTGTGAGAGGCAATCGTCAGCATCCGAAGAATCCAGACCTTTTTGCTA
CTTGATGAGATATCACAGCGCAACCGTCAGCTGCCGTGATGGTAAAAAGATGGTGCATGTGCAGGAT
TTTACTGCTTTTTGGGATAAGGCATCAGAGACCCCACTACAAGGCCTTTCTTTACTGTCAGACCT
GGCGAATTGTTAGCTGTGGTCCGCCCGTGGGAGCAGGGAAGTCATCACTGTTAAGTGCCGTGCTCGGG
GAATTGGCCCAAGTACGGGCTGGTACGCTGCATGGAAGAATTGCCTATGTGTCTCAGCAGCCCTGG
GTGTTCTCGGAACTCTGAGGAGTAATATTTTATTGGGAAGAAATACGAAAAGGAACGATATGAAAA
```



[View online >](#)

GTCATAAAGGCTTGTGCTCTGAAAAAGGATTTACAGCTGTTGGAGGATGGTGATCTGACTGTGATAGGA
GATCGGGGAACCACGCTGAGTGGAGGGCAGAAAGCACGGGTAAACCTTGCAGAGCAGTGTATCAAGAT
GCTGACATCTATCTCCTGGACGATCCTCTCAGTGCAGTAGATGCGGAAGTTAGCAGACACTTGTTGCGAA
CTGTGTATTTGTCAAATTTTGCATGAGAAGATCACAATTTTAGTGACTCATCAGTTGCAGTACCTCAAA
GCTGCAAGTCAGATTCTGATATTGAAAGATGGTAAAATGGTGCAGAAGGGGACTTACACTGAGTTCCTA
AAATCTGGTATAGATTTTGGCTCCCTTTTAAAGAAGGATAATGAGGAAAGTGAACAACCTCCAGTTCCA
GGAACTCCACACTAAGGAATCGTACCTTCTCAGAGTCTTCGGTTTGGTCTCAACAATCTCTAGACCC
TCCTTGAAAGATGGTGCCTGGAGAGCCAAGATGTTGCCATGTGCTTCAAGATTGGTGGCTTTCATAC
TGGGCAAAACAAAAGTATGCTAAATGCTACTGTAAATGGAGGAGGAAATGTAACCGAGAGCTAGAT
CTTAAGTGGTACTTAGGAATTTATTAGGTTTAACTGTAGCTACCGTTCTTTTTGGCATAGCAAGATCT
CTATTGGTATTCTACGCTCTTGTAACTCTTCAAAAATTTGCACAACAAAATGTTTGGTCAATTTCTG
AAAGCTCCGGTATTATTCTTTGATAGAAATCCAATAGGAAGAATTTTAAATCGTTTCTCAAAGACATT
GGACACTGGATGATTTGCTGCCGCTGACGTTTTTAGATTTTCCAGACATTGCTACAAGTGGTTGGT
GTGGTCTCTGTGGCTGTGGCCGTGATTCCTTGGATCGCAATACCCTTGGTCCCCTTGAATCATTTTC
ATTTTTCTTCGGCGATATTTTTTGGAAACGTCAAGAGATGTGAAGCGCCTGGAATCTACAACCTCGGAGT
CCAGTGTTCCTCACTTATCATCTTCTCTCCAGGGGCTCTGGACCATCCGGGCATACAAAGCAGAAGAG
AGGTGTCAGGAAGTGTGGATGCACACCAGGATTTACATTCAGAGGCTTGGTTCTTGTTTTTGACACG
TCCCGCTGGTTTCCGCTCCGCTGGATGCCATCTGTGCCATGTTTGTATCATCGTTGCCTTTGGGTCC
CTGATTCTGGCAAAAATCTGGATGCCGGCAGGTTGGTTTGGCACTGTCTATGCCCTCACGCTCATG
GGGATGTTTTCAGTGGTGTGTTTCGACAAAGTGTGAAGTTGAGAATATGATGATCTCAGTAGAAAGGGTC
ATTGAATACACAGACCTTAAAAAGAAGCACCTTGGGAATATCAGAAACGCCACCACCAGCCTGGCCC
CATGAAGGAGTGATAATCTTTGACAATGTGAACCTCATGTACAGTCCAGGTGGCCTCTGGTACTGAAG
CATCTGACAGCACTCATTAAATCACAAGAAAAGTTGGCATTGTGGGAAGAACCGGAGCTGGAAAAAGT
TCCTCATCTCAGCCCTTTTTAGATTGTGAGAACCAGGTAATAATTTGGATTGATAAGATCTTGACA
ACTGAAATTGGACTTCACGATTTAAGGAAGAAGATGTCAATCATACCTCAGGAACCTGTTTTGTTACT
GGAACAATGAGGAAAAACCTGGATCCCTTTAATGAGCACACGGATGAGGAACTGTGGAATGCCTTACAA
GAGGTACAACCTTAAAGAAACCATTGAAGATCTTCTGGTAAAAATGGATACTGAATTAGCAGAATCAGGA
TCCAATTTTAGTGTGGACAAAGACAACCTGGTGTGCCTTGGCAGGGCAATTCTCAGGAAAAATCAGATA
TTGATTATTGATGAAGCGACGGCAAATGTGGATCCAAGAAGTATGAGTTAATACAAAAAAAATCCGG
GAGAAATTTGCCACTGCACCGTGTACCACTTGCACACAGATTGAACACCATTATTGACAGCGACAAG
ATAATGGTTTTAGATTCAGGAAGACTGAAAGAATATGATGAGCCGTATGTTTTGCTGCAAAATAAGAG
AGCCTATTTTACAAGATGGTGAACAACCTGGGCAAGGCAGAAGCCGCTGCCCTCACTGAAACAGCAAAA
CAGGTATACTTCAAAAGAAATTATCCACATATTGGTCCACTGACCACATGGTTACAAAACACTTCCAAT
GGACAGCCCTCGACCTTAACTATTTTCGAGACAGCACTG
AGCGGACCGACGCGTACGCGGCCGCTCGAG - GFP Tag - GTTTAAAC

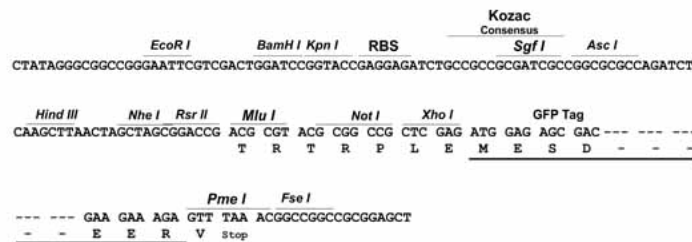
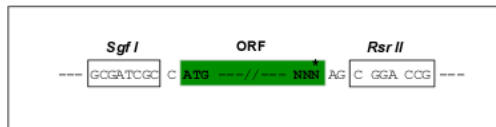
Protein Sequence: >Peptide sequence encoded by RG240092
 Blue=ORF Red=Cloning site Green=Tag(s)

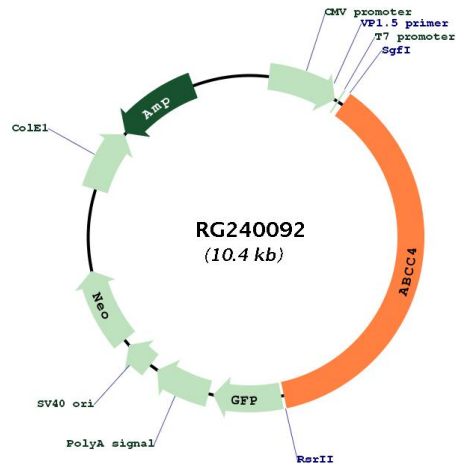
MLPVYQEVPKPNLQDANLCSRFFFWLNPLFKIGHKRRLEEDDMYSVLPEDRSQHLGEELQGFWDKEVL
 RAENDAQKPSL TRAIKCYWKS YLVLGIFTLIEESAKVIQPIFLGKIIN YFENYDPMDSVALNTAYAYA
 TVLTFCTLILAILHHL YFYHVQCAGMRLRVAMCHMIYRKALRLSNMAMGKTTTGQIVNLLSNDVNFQDQ
 VTVFLHFLWAGPLQAI AVTALLWMEIGISCLAGMAVLIILLPLQSCFGKLFSSLRSKTATFDARIRTM
 NEVITGIRI IKMYAWEKS FSNLITNLRKKEISKILRSSCLRGMNLASFFSASKIIVFVTFTTYVLLGSV
 ITASRVFVAVTLYGAVRLTVTLFFPSAIERVSEAIVSIRRIQTFLLLDEISQRNRQLPSDGKMMVHVQD
 FTAFWDKASEPTLQGLSFTVRPGELLAVVGPVVGAGKSSLLSAVLGELAPSHGLVSVHGRIAYVSQQPW
 VFSGLTRSNILFGKYEKERYEKVIKACALKKDLQLEEDGDLTVIGDRGTTLSGGQKARVNLARAVYQD
 ADIYLLDDPLSAVDAEVSRLH FELCICQILHEKITILVTHQLQYLKAASQILILKDGKMQKGTYTEFL
 KSGIDFGSLLKKDNEESEQPPVPGTPTLRNRTFSESSVWSQQSSRPSLKDGALESQDVAVYLQDWWLSY
 WANKQSM LNVTVNGGGNVTEKLDL N WYLG IY SGLTVATVLFGIARSLLVFYVLVNSSQTLHNKMFESIL
 KAPVLFDRNP IGRILNRF SKDIGHLDDLPLTFLDFIQTL LQVVGVS VAVAVIPWIAIPLVPLGIIF
 IFLRRYFLET SRDVKRLESTTRSPVFSHLSSSLQGLWTRAYKAEE RCQELFDAHQDLHSEAWFLFTT
 SRWFAVRLDAICAMFVII VAFGSLILAKTL DAGQVGLALSYAL TLMGMFQWCVRQSAEVENMMISVERV
 IEYTDLEKEAPWEYQKRPPPAWPHGVIIFDNVNFMYSPGGPLV LKHLTALIKSQEKVGI VGRGTGAGKS
 SLISALFRLSEPEGKIWIDKIL TTEIGLHDLRKKMSIIPQEPV LFTGMRKNLDPFNEHTDEELWNALQ
 EVQKETIEDLP GKMDTELAESGSNFSVGQRQLVCLARAILRKNQIL IIDEATANVDPRTDELIQKKIR
 EKFAHCTVLTIAHRLNTIIDSDKIMVLDSGRLKEYDEPYVLLQNKESLFYKMQQLGKAEAAAL TETAK
 QVYFKRNYPHIGHTDHMVTNTSNGQPSTLTI FETAL
 SGPTRTRPLEMESDESGLPAMEIECRITGTLNGVEFELVGGGEGTPEQGRMTNKMKSTKGALTFSPYLL
 SHVMGYGFYHFGTYPSGYENPFLHAINNGGYTNTRIEKYEDGGVLHVSFSYRYEAGRVI GDFKVMGTGF
 PEDSVIFTDKIIRSNATVEHLHPMGDNDLDGSFTRTFLSLRDGGYSSVVD SHMHFKSAIHPSILQNGGP
 MFAFRRVEEDHSNTELGIVEYQHAFKTPDADAGEERV

Restriction Sites: SgfI-RsrII

Cloning Scheme:

Cloning sites used for ORF Shutting:



Plasmid Map:


ACCN: NM_001301829

ORF Size: 3834 bp

OTI Disclaimer: Due to the inherent nature of this plasmid, standard methods to replicate additional amounts of DNA in *E. coli* are highly likely to result in mutations and/or rearrangements. Therefore, OriGene does not guarantee the capability to replicate this plasmid DNA. Additional amounts of DNA can be purchased from OriGene with batch-specific, full-sequence verification at a reduced cost. Please contact our customer care team at custsupport@origene.com or by calling 301.340.3188 option 3 for pricing and delivery.

The molecular sequence of this clone aligns with the gene accession number as a point of reference only. However, individual transcript sequences of the same gene can differ through naturally occurring variations (e.g. polymorphisms), each with its own valid existence. This clone is substantially in agreement with the reference, but a complete review of all prevailing variants is recommended prior to use. [More info](#)

OTI Annotation: This clone was engineered to express the complete ORF with an expression tag. Expression varies depending on the nature of the gene.

Components: The ORF clone is ion-exchange column purified and shipped in a 2D barcoded Matrix tube containing 10ug of transfection-ready, dried plasmid DNA (reconstitute with 100 ul of water).

RefSeq: [NM_001301829.2](#)

RefSeq Size: 5730 bp

RefSeq ORF: 3837 bp

Locus ID: 10257

UniProt ID: [O15439](#)

Cytogenetics: 13q32.1

Protein Families: Druggable Genome, Ion Channels: Other, Transmembrane

Protein Pathways: ABC transporters

MW: 144.2 kDa

Gene Summary: The protein encoded by this gene is a member of the superfamily of ATP-binding cassette (ABC) transporters. ABC proteins transport various molecules across extra- and intra-cellular membranes. ABC genes are divided into seven distinct subfamilies (ABC1, MDR/TAP, MRP, ALD, OABP, GCN20, White). This protein is a member of the MRP subfamily which is involved in multi-drug resistance. This family member plays a role in cellular detoxification as a pump for its substrate, organic anions. It may also function in prostaglandin-mediated cAMP signaling in ciliogenesis. Alternative splicing of this gene results in multiple transcript variants. [provided by RefSeq, Sep 2014]