

Product datasheet for **RG240091**

MCAF1 (ATF7IP) (NM_181352) Human Tagged ORF Clone

Product data:

Product Type:	Expression Plasmids
Product Name:	MCAF1 (ATF7IP) (NM_181352) Human Tagged ORF Clone
Tag:	TurboGFP
Symbol:	MCAF1
Synonyms:	AM; ATF-IP; MCAF; MCAF1; p621
Mammalian Cell Selection:	Neomycin
Vector:	pCMV6-AC-GFP (PS100010)
E. coli Selection:	Ampicillin (100 ug/mL)
ORF Nucleotide Sequence:	>RG240091 representing NM_181352. Blue=ORF Red=Cloning site Green=Tag(s)

```
GCTCGTTT TAGTGAACCGTCAGAATTTTGT AATACGACTCACTATAGGGCGCCGGGAATTCGTCGACTG
GATCCGGTACCGAGGAGATCTGCCGCC CGCATCGCC
ATGCATCAGGACCAGAGATT CAGAATGGACAGTTT AGAAGAACCTCAGAAAAAGTCTTTAAGGCTCGA
AAAACGATGAGAGTGAGTGATCGTCAGCAACTTGAAGCAGTGACAAGGTCAAAGAAGAACTGTTGAAA
ACTGATGTCAAGCTGTTAAATGGCAACCATGAAAATGGAGATTTGGACCAACCTCACCTTTGGAAAAAC
ATGGATTACATTAAGACAAGGAAGAGGTGAATGGCATTGAAGAGATTTGTTTTGATCCTGAAGGAAGT
AAAGCAGAATGGAAGGAAACACCCTGTATCCTAAGTGTTAATGTAAAAACAAGCAGGATGATGATTTA
AATTGTGAACCTTTGTCTCCCCATAATAACTCCAGAACCAGTCTCTAACTGCCTGCTGAACCAGTT
TCTGGTGATCCAGCCCCTGGTGATCTGGATGCCGGAGATCCAGCCTCCGGAGTACTGGCCTCTGGTGAT
TCCACCTCTGGTGATCCCACCTCTAGCGAGCCCTCCTCTAGTGATGCTGCCTCTGGTGATGCAACCTCT
GGTGATGCCCTTCTGGTGATGTGTCCCCTGGTGATGCCACCTCTGGTGATGCCACTGCTGATGATCTC
TCCTCTGGTGATCCCACCTCTAGTGATCCCATCCCAGGTGAACCGGTCCCTGTTGAACCCATTTCTGGT
GATTGTGCCGCTGATGATATAGCCTCTAGTGAAATAACTTCTGTTGATCTGGCTTCTGGAGCACCAGCT
TCCACTGATCCAGCCTCTGATGATCTGGCCTCTGGTGATCTATCCTCTAGTGAACCTGGCCTCTGATGAT
CTGGCCACTGGTGAACCTGGCCTCTGATGAGCTGACTTCTGAATCAACCTTTGATCGTACCTTTGAACCA
AAGTCTGTACCAGTTTGTGAACCAAGTTCTGAAATTTGACAATATAGAACCAAGTAGCAATAAAGATGAT
GATTTTCTTGAAAAAATGGAGCTGATGAAAAATTAGAGCAAATTCAGAGTAAAGACTCATTGGATGAG
AAAAATAAAGCTGATAATAATATTGATGCTAATGAAGAACTCTAGAAACAGATGATACAACATTTTGT
TCAGATCGACCTCCTGAAAATGAAAAGAAGGTAGAGGAAGATATTATCACAGAGCTTGCTCTGGAGAA
GATGCTATATCTAGCAGTATGGAATTGACCAAGGTGAAAAGAATGAAGATGAACTTCTGCAGATCTT
GTAGAAACGATTAATGAAAATGTTATTGAAGATAACAAAAGTGAGAATATCTTAGAAAATACAGACTCT
ATGGAGACAGATGAAATCATTCTATTTTGGAAAAGCTTGACCTTCTGAGGATGAACTTACTTGCTTT
TCTAAAACATCTCTCCTCCAATCGATGAGACAAATCCAGATTTGGAAGAGAAAAATGAAAGTTCTTTT
GGTTCACCATCTAAACAAGAAAGTAGTGAGAGTTTGCCAAAAGAAGCCTTCTGGTCTCTGATGAA
```



GAGGATATTTCCGGTGAAAAAGATGAGTCTGAAGTTATATCGCAAAATGAAACGTGCTCTCCAGCAGAA
 GTGAAAAGTAATGAAAAGGACAACAACTGAGGAAGAAGAGCAAGTAATACATGAAGATGATGAAAAG
 CCTTCTGAGAAAAATGAATTTCTAGACGAAAACGTTCTAAATCAGAAGACATGGACAATGTACAGTCT
 AAACGTCGTGCATATATGGAAGAAGAATATGAGGCAGAATTTCAAGTAAAGATTACAGCCAAAGGAGAC
 ATTAACCGAAAACCTTCAAAGGTTATACAGTGGTTGCTGGAAGAAAAATGTGTGCGCTGCAGTGTGCT
 GTATTTGATAAGACTTTGGCAGAATTGAAAACACGAGTGGAAAAGATTGAATGTAACAAGAGGCATAAA
 ACAGTTCTCACTGAACTACAGGCCAAGATAGCCAGGTTAACCAAACGCTTTGAAGCAGCCAAAGAAGAT
 CTTAAGAAAAGACATGAACATCCACCAACCCACCAAGTATCACCAGGAAAACTGTAAATGATGTCAAC
 AGCAATAATAACATGTCTTACAGAAATGCAGGCACAGTGAGACAGATGCTGGAGTCCAAAAGAAATGTA
 AGCGAGAGTGCACCACCATCCTTTCAAACCTCCTGTGAATACAGTATCTTCAACCAATCTTGTCACTCCT
 CCAGCAGTTGTCAGTAGTCAACCTAAATTCAGACTCCAGTACTTCCGGTTCCCTCACAGCAACGTCA
 GTTCTTCTGCACCCAATACAGTACTGTAGTTGCTACTACTCAGGTGCCTAGTGGAAATCCCCAGCCT
 ACAATCTCTTTACAGCCTTTGCCAGTGATTTTGCATGTACCTGTTGCAGTATCTCCAGCCTCAGCTT
 CTACAGAGCCATCCAGGGACTTTGGTGACTAATCAACCATCTGGCAATGTTGAATTCATTCTGTGCAA
 AGCCACCTACAGTGAGTGGTCTTACAAAAATCCAGTATCCTTGCCATCCTTGCCAAATCCCCTAAA
 CCAAACAACGTTCTTCTGTGCCAGTCCTAGTATTCAAAGGAACCTACTGCCAGTGTGCACCATTG
 GGAACAACACTTGTGTGCAAGGCTGTTCCAACAGCACACTCTATTGTACAGCCACAAGGACTTCTTTA
 CCCACAGTGGGCCATCAGGACTCTATAGTCCATCAACTAATCGAGGTCTATACAGATGAAAATTTCCA
 ATTTCTGCATTTAGTACTTCGTCTGCTGCGAGAACAAGCAATACCACCCCAAGAATTGAAAACCAG
 ACAACAAAACAATAGATGCTTCTGTGAGTAAAGCAGCTGATAGCACATCACAGTGTGGAAAAGCC
 ACTGGCAGTGATCAAGTGGTGTATTGATCTCACAATGGATGATGAAGAGAGTGGAGCTTCACAAGAC
 CCCAAAAAATAAATCACACTCCTGTATCAACCATGAGTCTTCTCAGCCTGTGCACGACCATTGCAA
 CCCATACAACCAGCACCCTCTTCAACCATCTGGGGTGCCAACAAGTGGACCATCTCAGACCACATA
 CACTTACTACCTACAGTCCAACTACCGTGAATGTAACACATCGTCCAGTAACTCAGGTGACCACAAGA
 CTCCTGTACCAAGAGCTCCTGCAAACCACAGGTGGTTTATACAACCTTCTCCTGCACCACCAGCTCAG
 GCTCCCTTGCAGGAACTGTTATGCAGGCTCCTGCTGTTGCGCAGGTCAATCCCCAAAATAGTGTTACA
 GTTCGAGTGCCTCAAACAACCACATATGTTGTAACAATGGACTAACCTGGGATCAACAGGACCTCAG
 CTCACAGTGCATCACCGACCACCACAAGTGCATACTGAGCCCCACGCCCGTGCACCCAGCACCCTTA
 CCAGAAGCTCCACAACCACAGCGTCTGCCCCAGAAGCTGCCAGCACATCTCTGCCTCAGAAGCCACAC
 TTGAAGTTAGCACGCGTTCAGAGTCAAAATGGCATAGTACTGTCATGGAGTGCCTGGAGGTGGATCGA
 AGCTGTGCCACTGTTGATAGCTACCATCTCTATGCTTACCATGAGGAACCCAGTGCCACTGTGCCCTCA
 CAATGAAAAAAGATTGGGGAAGTCAAGGCACTTCCCTTGCCATGGCATGTACTCTACCCAGTTTGTA
 TCTGGTAGCAAATACTACTTTGAGTACGAGCCAAAGGATATTTATGGACGTTTTGGGCCCTTCTGTGAT
 CCTCAGTCAACAGATGTGATCTTCTACCCAGAGCAGT
 AGCGGACCGACGCGTACGCGGCCGCTCGAG - GFP Tag - GTTTAAAC

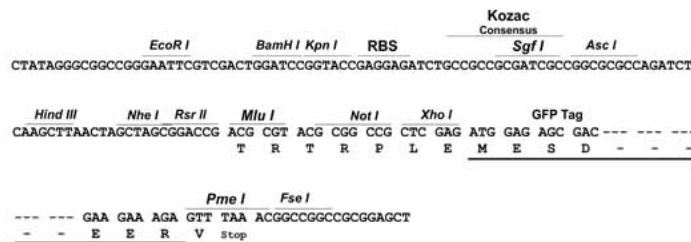
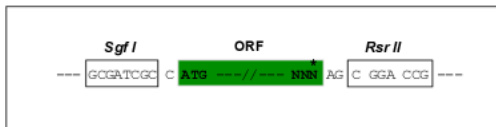
Protein Sequence: >Peptide sequence encoded by RG240091
 Blue=ORF Red=Cloning site Green=Tag(s)

MHQDQRFMRMSLEEPQKKVFKARKTMRVSDRQQLEAVYKVKKEELLKTDVKLLNGNHENGDLPTSPLEN
 MDYIKDKKEEVNGIEEICFDPEGSKAEWKETPCILSVNVKNKQDDDLNCEPLSPHNITPEPVSKLPAEPV
 SGDPAPGDL DAGDPASGVLASGDSTSGDPTSSEPPSSDAASGDATSGDAPSGDVSPGDATSGDATADDL
 SSGDPTSSDPIPGEPVPEPISGDCAADDIASSEITSVDLASGAPASTDPASDDLASGDLSSSELASDD
 LATGELASDELTESTFDRTFEPKSVPVCEPVPEIDNIEPSSNKDDDFLEKNGADEKLEQIQSKDSLDE
 KNKADNNIDANEETLETDTTICSDRPPENEKKVEEDIITELALGEDAISSSMEIDQGEKNEDETSADL
 VETINENVIEDNKSENILENTDSMETDEIIPILEKLAPSEDELTCFSKTSLLPIDETNPDL EEKMESSF
 GSPSKQESSESLPKEAFLVLSDEEDISGEKDESEVISQNETCSPAEVESNEKDNKPEEEEEQVIHEDDER
 PSEKNEFSRRKRKSKSEMDNVQSKRRRYMEEYEAEFQVKITAKGDINQKLQKVIQWLL EELKCALQCA
 VFDKTLAELKTRVEKIECNKRHKTVLTELQAKIARLTKRFEAAKEDLKKRHEHPNPPVSPGKTVNDVN
 SNNNMSYRNAGTVRQMLESKRNVSEAPPSFQTPVNTVSSTNLVTTPAVVSSQPKLQTPVTSGLTATS
 VLPAPNTATVVATTQVPSGNPQPTISLQPLVILHVPVAVSSQPQLLQSHPGTLVTNQPSGNVEFISVQ
 SPPTVSGLTKNPVSLPSLPNPTKPNVPSVPSISQNRPTASAAPLGTTLAVQAVPTAHSIVQATRTSL
 PTVGPSGLYSPSTNRGPIQMKIPI SAFSTSSAAEQNSNTTPRIENQTKTIDASVSKKAADSTSQCGKA
 TGSDDSSGVIDL TMDDEESGASQDPKKNHTPVSTMSSSQPVSRLQPIQPAPPLQPSGVPTSGPSQTTI
 HLLPTAPTTVNVTHRPTVQVTRRLVPVRAPANHQVYVYTTLPAPPAQAPLRGTVMQAPAVRQVNPQNSVT
 VRVPQTTTTYVNNGLTLGSTGPQLTVHHRPPQVHTEPPRPVHPAPLPEAPQPQLPPEAASTSLPQKPH
 LKLARVQSQNGI VLSWSVLEVDRSCATVDSYHL YAYHEEPSATVPSQWKKIGEVKALPLPMACTLTQFV
 SGSKYYFAVRAKDIYGRFGPFCDPQSTDVISSTQSS
 SGPTRTRPLEMESDESGLPAMEIECRITGTLNGVEFELVGGGEGTPEQGRMTNKMKSTKGALTFSPYLL
 SHVMGYGFYHFGTYPSGYENPFLHAINNGGYTNTRIEKYEDGGVLHVSFSYRYEAGRVI GDFKVMGTGF
 PEDSVIFTDKI IRSNATVEHLHPMGDNDLDGSFTRTFLSRDGGYSSVVD SHMHFKSAIHPSILQNGGP
 MFAFRRVEEDHSNTELGIVEYQHAFKTPDADAGEERV

Restriction Sites: SgfI-RsrII

Cloning Scheme:

Cloning sites used for ORF Shuttling:

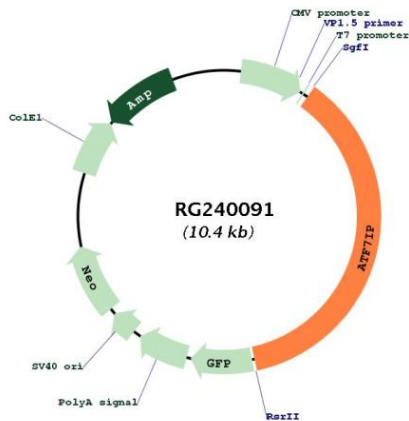


ACCN: NM_181352

ORF Size: 3834 bp

OTI Disclaimer:	The molecular sequence of this clone aligns with the gene accession number as a point of reference only. However, individual transcript sequences of the same gene can differ through naturally occurring variations (e.g. polymorphisms), each with its own valid existence. This clone is substantially in agreement with the reference, but a complete review of all prevailing variants is recommended prior to use. More info
OTI Annotation:	This clone was engineered to express the complete ORF with an expression tag. Expression varies depending on the nature of the gene.
Components:	The ORF clone is ion-exchange column purified and shipped in a 2D barcoded Matrix tube containing 10ug of transfection-ready, dried plasmid DNA (reconstitute with 100 ul of water).
RefSeq:	NM_181352.2
RefSeq Size:	9019 bp
RefSeq ORF:	3837 bp
Locus ID:	55729
UniProt ID:	Q6VMQ6
Cytogenetics:	12p13.1
Protein Families:	Transcription Factors
MW:	137.9 kDa
Gene Summary:	ATF7IP is a multifunctional nuclear protein that associates with heterochromatin. It can act as a transcriptional coactivator or corepressor depending upon its binding partners (summary by Liu et al., 2009 [PubMed 19106100]).[supplied by OMIM, Nov 2010]

Product images:



Circular map for RG240091