

## Product datasheet for **RG240084**

### **MCAF1 (ATF7IP) (NM\_001286514) Human Tagged ORF Clone**

#### Product data:

Product Type:	Expression Plasmids
Product Name:	MCAF1 (ATF7IP) (NM_001286514) Human Tagged ORF Clone
Tag:	TurboGFP
Symbol:	MCAF1
Synonyms:	AM; ATF-IP; MCAF; MCAF1; p621
Mammalian Cell Selection:	Neomycin
Vector:	pCMV6-AC-GFP (PS100010)
E. coli Selection:	Ampicillin (100 ug/mL)
ORF Nucleotide Sequence:	>RG240084 representing NM_001286514. Blue=ORF Red=Cloning site Green=Tag(s)

```
GCTCGTTTGTAGAACCGTCAGAATTTTGTAAACGACTCACTATAGGGCGGCCGGGAATTCGTGACTG
GATCCGGTACCGAGGAGATCTGCCGCCCGCATCGCC
ATGGACAGTTTGAAGAACCCTCAGAAAAAGTCTTTAAGGCTCGAAAAACGATGAGAGTGAGTGATCGT
CAGCAACTTGAAGCAGTGTACAAGGTCAAAGAAGAACTGTTGAAAACGATGTCAAGCTGTTAAATGGC
AACCATGAAAATGGAGATTTGGACCCAACCTCACCTTTGGAAAACATGGATTACATTAAGACAAGGAA
GAGGTGAATGGCATTGAAGAGATTTGTTTTGATCCTGAAGGAAGTAAAGCAGAATGGAAGGAAACACCC
TGTATCCTAAGTGTTAATGTAAAAAACAAGCAGGATGATGATTTAAATTGTGAACCTTTGTCTCCCAT
AATATAACTCCAGAACCAGTCTCTAAACTGCCTGCTGAACGATTTCTGGTGATCCAGCCCTGGTGAT
CTGGATGCCGGAGATCCAGCCTCCGGAGTACTGGCCTCTGGTGATTCACCTCTGGTGATCCACCTCT
AGCGAGCCCTCCTCTAGTGATGCTGCCTCTGGTGATGCAACCTCTGGTGATGCCCTTCTGGTGATGTG
TCCCTGGTGATGCCACCTCTGGTGATGCCACTGCTGATGATCTCTCCTCTGGTGATCCACCTCTAGT
GATCCCATCCCAGGTGAACCGGTCCCTGTTGAACCCATTTCTGGTGATTGTGCCGCTGATGATATAGCC
TCTAGTGAAAATACTTCTGTTGATCTGGCTTCTGGAGCACCAGCTTCCACTGATCCAGCCTCTGATGAT
CTGGCCTCTGGTGATCTATCCTCTAGTGAACCTGGCCTCTGATGATCTGGCCACTGGTGAACCTGGCCTCT
GATGAGCTGACTTCTGAATCAACCTTTGATCGTACCTTTGAACCAAAGTCTGTACCAGTTTGTGAACCA
GTTCTGAAATTGACAATATAGAACCAAGTAGCAATAAAGATGATGATTTTCTTGAAAAAATGGAGCT
GATGAAAAATTAGAGCAAATTCAGAGTAAAGACTCATTGGATGAGAAAAATAAAGCTGATAATAATATT
GATGCTAATGAAGAACTCTAGAAAACAGATGATACAACCTATTTGTTTCAGATCGACCTCCTGAAAATGAA
AAGAAGGTAGAGGAAGATATTATCACAGAGCTTGTCTTGGAGAAGATGCTATATCTAGCAGTATGGAA
ATTGACCAAGGTGAAAAGAATGAAGATGAACTTCTGCAGATCTGTAGAAACGATTAATGAAAATGTT
ATTGAAGATAACAAAAGTGAGAATATCTTAGAAAATACAGACTCTATGGAGACAGATGAAATCATTCTC
ATTTTGGAAAAGCTTGCACCTTCTGAGGATGAACTTACTTGTCTTTCTAAAACATCTCTCCTTCCAATC
GATGAGACAAATCCAGATTTGGAAGAGAAAATGAAAAGTCTTTTGGTTCCACATCTAAACAAGAAAAGT
AGTGAGAGTTTGCCAAAAGAAGCCTTTCTGGTCTCTCTGATGAAGAGGATATTTCCGGTGAAAAGAT
```



[View online »](#)

GAGTCTGAAGTTATATCGCAAAATGAAACGTGCTCTCCAGAAGTAGAAAGTAATGAAAAGGACAACAAA  
 CCTGAGGAAGAAGAGCAAGTAATACATGAAGATGATGAAAAGACCTTCTGAGAAAAATGAATTTTCTAGA  
 CGAAAACGTTCTAAATCAGAAGACATGGACAATGTACAGTCTAAACGTCGTCGATATATGGAAGAAGAA  
 TATGAGGCAGAATTTCAAGTAAAGATTACAGCCAAAGGAGACATTAACCAGAACTTCAAAGGTTATA  
 CAGTGGTTGCTGGAAGAAAAATTGTGTGCGCTGCAGTGTGCTGTATTTGATAAGACTTTGGCAGAATTG  
 AAAACACGAGTGGAAAAGATTGAATGTAACAAGAGGCATAAAACAGTTCTCACTGAACTACAGGCCAAG  
 ATAGCCAGGTTAACCAAACGCTTTGAAGCAGCCAAAGAAGATCTTAAGAAAAGACATGAACATCCACCC  
 AACCCACAGTATCACCAGGAAAAACTGTAAATGATGTCAACAGCAATAATAACATGTCTTACAGAAAT  
 GCAGGCACAGTGAGACAGATGCTGGAGTCCAAAAGAAATGTAAGCGAGAGTGACCACCATCCTTTCAA  
 ACTCCTGTGAATACAGTATCTTCAACCAATCTTGTCACTCCTCCAGCAGTTGTCAGTAGTCAACCTAAA  
 TTGCAGACTCCAGTGACTTCGGGTTCCCTCACAGCAACGTGAGTTCTTCTGCACCCAATACAGCTACT  
 GTAGTTGCTACTACTCAGGTGCCTAGTGGAAATCCCCAGCCTACAATCTCTTTACAGCCTTTGCCAGTG  
 ATTTTGCATGTACCTGTTGCAGTATCCTCCAGCCTCAGTTCTACAGAGCCATCCAGGGACTTTGGTG  
 ACTAATCAACCATCTGGCAATGTTGAATTCATTTCTGTGCAAAGCCACCTACAGTGAGTGGTCTTACC  
 AAAATCCAGTATCCTTGCCATCCTTGCCAAATCCCACTAAACCAAACAACGTTCTTCTGTGCCAGT  
 CCTAGTATTCAAAAGAACCCCTACTGCCAGTGTGCACCATTGGGAACAACACTTGTCTGTGAGGCTGTT  
 CCAACAGCACACTCTATTGTACAAGCCACAAGGACTTCTTTACCCACAGTGGGCCATCAGGACTCTAT  
 AGTCCATCAACTAATCGAGGTCCATACAGATGAAAATTCCAATTTCTGCATTTAGTACTTCGTCTGCT  
 GCAGAACAGAACGCAATACCACCCCAAGAATTGAAAACCAGACAACAAAAACAATAGATGCTTCTGTG  
 AGTAAGAAAGCAGCTGATAGCACATCACAGTGTGAAAAGCCACTGGCAGTGATTCAAGTGGTGTGATT  
 GATCTCACAATGGATGATGAAGAGAGTGGAGCTTCACAAGACCCAAAAAACTAAATCACACTCCTGTA  
 TCAACCATGAGTCTTCTCAGCCTGTGTACGACCATTGCAACCCATACAACCAGCACCCGCTCTTCAA  
 CCATCTGGGGTGCCAACAAGTGGACCATCTCAGACCACCATACTTACTACCTACAGTCCAACCTACC  
 GTGAATGTAACACATCGTCCAGTAACTCAGGTGACCACAAGACTCCCTGTACCAAGAGCTCCTGCAAC  
 CACCAGGTGGTTTATACTCCTTCTGACCACCAGCTCAGGCTCCCTTGCAGGAACTGTTATGCAG  
 GCTCCTGCTGTTGCGCAGGTCAATCCCCAAAATAGTGTTACAGTTCGAGTGCCTCAAACAACCACATAT  
 GTTGTAACAATGGACTAACCTGGGATCAACAGGACCTCAGCTCACAGTGCATCACCAGCACCACAA  
 GTGCATACTGAGCCCCACGCCCGTGCACCCAGCACCCTTACCAGAAGCTCCACAACCACAGCGTCTG  
 CCCCCAGAAGCTGCCAGCACATCTGCTCAGAAGCCACACTTGAAGTAGCACGCGTTCAGAGTCAA  
 AATGGCATAGTACTGTCATGGAGTGTCTGGAGGTGGATCGAAGCTGTGCCACTGTTGATAGCTACCAT  
 CTCTATGCTTACCATGAGGAACCCAGTGCCACTGTGCCCTCACAATGAAAAAGATTGGGGAAGTCAAG  
 GCACTTCCCTTGCCATGGCATGTACTCTACCCAGTTTGTATCTGGTAGCAAACTACTACTTTGCAGTA  
 CGAGCCAAGGATATTTATGGACGTTTTGGGCTTTCTGTGATCCTCAGTCAACAGATGTGATCTCTTCT  
 ACCCAGAGCAGT

AGCGGACCGACGCGTACGCGGCCGCTCGAG - GFP Tag - GTTTAAAC

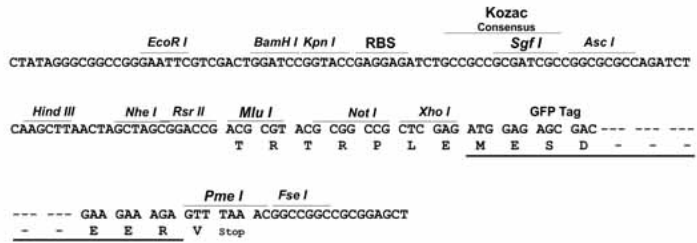
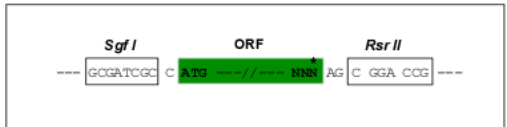
**Protein Sequence:** >Peptide sequence encoded by RG240084  
 Blue=ORF Red=Cloning site Green=Tag(s)

MDSL EEPQKVKFKARKTMRVSDRQQL EAVYKVK EELLKTDVKLLNGNHENGDL DPTSLENMDYIKDKE  
 EVNGIEEICFDPEGSKAEWKETPCILSVNVKNKQDDDLNCEPLSPHNITPEPVSKLPAEPVSGDPAPGD  
 LDAGDPASGVLASGDSTSGDPTSEPPSSDAASGDATSGDAPSGDVSPGDATSGDATADDLSSGDPTSS  
 DPITPGEVPVPEISGDCAADDIASSEITSDVLASGAPASTDPASDDLASGDLSSSELASDDLATGELAS  
 DELTSESTFDRTFEPKSVPVCEPVEIDNIEPSSNKDDDFLEKNGADEKLEQIQSKDSLDEKNKADNNI  
 DANEETLETDDTTICSDRPPENEKKVEEDII TELALGEDAISSSMEIDQGEKNEDETSADLVETINENV  
 IEDNKSENILENTDSMETDEIIPILEKLAPSEDELTCFSKTSLLPIDETNPDL EEEKMESSFGSPSKQES  
 SESLPKEAFLVLSDEEDISGEKDESEVISQNETCSPEVESNEKDNKPEEEEEQVIHEDDERPSEKNEFSR  
 RKRSKSEMDMNVQSKRRRYMEEEYEA EFQVKITAKGDI NQKLQKVIQWLL EEKLCALQCAVFDKTLAEL  
 KTRVEKIECNKRHKT V L TELQAKIARLTKRFEAAKEDLKKRHEHPPNPPVSPGKT VNDVNSNNMSYRN  
 AGTVRQMLESKRNVSESAPPSFQTPVNTVSSTNLVTPPAVSSQPKLQTPVTSGLTATSVLPA NTAT  
 VVATTQVPSGNPQPTISLQPLPVLHVPVAVSSQPQLLQSHPGTLVTNQPSGNVEFISVQSPPTVSGLT  
 KNPVSLPSLPNPTKPNVSPVSPSIQRNPTASAAPL GTTLAVQAVPTAHSIVQATRTSLPTVGP SGLY  
 SPSTNRGPIQMKIPISAFSTSSAAEQSN TTPRIENQTNKIDASVSKKAADSTSQCGKATGSDSSGVI  
 DLTMDDEESGASQDPKKNHTPVSTMSSSQPVSRLQPIQPAPPLQPSGVPTSGPSQTTIHLLPTA PTT  
 VNVTHRPTQVTRRLPVPRAPANHQVVYTLPAPPAQAPLRGTVMQAPAVRQVNPQNSVTVRVPQT TTY  
 VVNNGLTLGSTGPQLTVHHRPPQVHTEPPRPVHPAPLPEAPQPQLPPEAASTSLPQKPHLKLARVQSQ  
 NGIVLSWSVLEVDRSCATVDSYHL YAYHEEPSATVPSQWKKIGEVKALPLPMACTLTQFVSGSKYYFAV  
 RAKDIYGRFGPFCDPQSTDVISSTQSS  
 SGPTRTRPLEMESDESGLPAMEIECRITGTLNGVEFELVGGGEGTPEQGRMTNKMKSTKGALTFSPYLL  
 SHVMGYGFYHFGTYPSGYENPFLHAINNGGYTNTRIEKYEDGGVLHVSFSYRYEAGRVI GDFKVMGTGF  
 PEDSVIFTDKIIRSNATVEHLHPMGDNDLDGSFTRTFLSRDGGYSSVVD SHMHFKSAIHPSILQNGGP  
 MFAFRRVEEDHSNTELGIVEYQHAFKTPDADAGEERV

**Restriction Sites:** SgfI-RsrII

**Cloning Scheme:**

Cloning sites used for ORF Shutting:

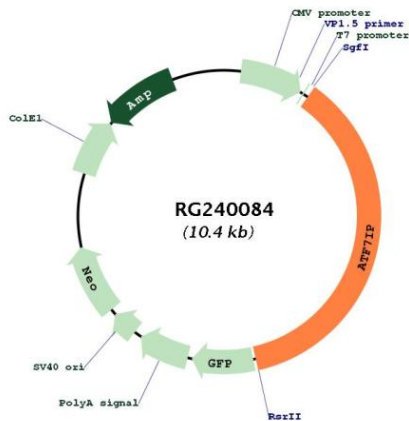


**ACCN:** NM\_001286514

**ORF Size:** 3807 bp

- OTI Disclaimer:** The molecular sequence of this clone aligns with the gene accession number as a point of reference only. However, individual transcript sequences of the same gene can differ through naturally occurring variations (e.g. polymorphisms), each with its own valid existence. This clone is substantially in agreement with the reference, but a complete review of all prevailing variants is recommended prior to use. [More info](#)
- OTI Annotation:** This clone was engineered to express the complete ORF with an expression tag. Expression varies depending on the nature of the gene.
- Components:** The ORF clone is ion-exchange column purified and shipped in a 2D barcoded Matrix tube containing 10ug of transfection-ready, dried plasmid DNA (reconstitute with 100 ul of water).
- RefSeq:** [NM\\_001286514.2](#)
- RefSeq Size:** 8875 bp
- RefSeq ORF:** 3810 bp
- Locus ID:** 55729
- UniProt ID:** [Q6VMQ6](#)
- Cytogenetics:** 12p13.1
- Protein Families:** Transcription Factors
- MW:** 136.8 kDa
- Gene Summary:** ATF7IP is a multifunctional nuclear protein that associates with heterochromatin. It can act as a transcriptional coactivator or corepressor depending upon its binding partners (summary by Liu et al., 2009 [PubMed 19106100]).[supplied by OMIM, Nov 2010]

**Product images:**



Circular map for RG240084