

Product datasheet for **RG240068**

TBC1D4 (NM_001286659) Human Tagged ORF Clone

Product data:

Product Type:	Expression Plasmids
Product Name:	TBC1D4 (NM_001286659) Human Tagged ORF Clone
Tag:	TurboGFP
Symbol:	TBC1D4
Synonyms:	AS160; NIDDM5
Mammalian Cell Selection:	Neomycin
Vector:	pCMV6-AC-GFP (PS100010)
E. coli Selection:	Ampicillin (100 ug/mL)
ORF Nucleotide Sequence:	>RG240068 representing NM_001286659. Blue=ORF Red=Cloning site Green=Tag(s)

```
GCTCGTTTGTGAAACCGTCAGAATTTGTAAACGACTCACTATAGGGCGCCGGGAATTCGTCGACTG
GATCCGGTACCGAGGAGATCTGCCGCCGCGATCGCC
ATGGAGCCGCCAGCTGCATTGAGGATGAGCCGTTCCCGCACCCCTGGAGCCCGAGCCGGGCGTCTCA
GCTCAGCCCGGCCCGGGAAGCCAAGCGATAAGCGGTTCCGGCTGTGGTACGTTGGGGGTCGTGCCTG
GACCACAGGACCAGCTGCCTATGCTGCCCTGGCTCATGGCCGAGATCCGCAGGCGCAGCCAGAAGCCC
GAGGCGGGCGGCTGCGGGGCGCCGGCGGCCGAGAGGTGATCCTGGTGTGCTCAGCGCGCCCTTCTGCGT
TGCGTCCCGCGCCGGGCTGGGGCTCGGGGGCACTAGTCCGTCGGCCACGCAGCCCAACCCGGCG
GTATTCATCTTCGAGCACAAGGCGCAGCATATCTCGCGTTCATCCACAACAGCCACGACCTCACCTAC
TTTGCCTACCTGATCAAGGCGCAGCCCGACGACCCGAGTCGCAGATGGCCTGCCAGTTTTCCCGGCC
ACAGACCCAGCCAGGTTCTGATGTTATTAGCAGCATAAGGCAATTATCTAAAGCGGCCATGAAAGAG
GATGCCAAACCCAGCAAAGATAATGAGGACGCCTTTTACAACCTCTCAGAAGTTCGAAGTCTGTACTGT
GGAAAGGTGACCGTGACCCACAAGAAGGCCCTCAAGCCTCATCGATGACTGCATGGAGAAGTTCAGC
CTGCACGAACAGCAGCGCCTGAAGATCCAAGGGGAGCAGCGCGGTCCGGACCCAGGAGAGGACCTGGCT
GACTTGGAGGTGGTGGTCCCGGGTCCCGGAGACTGCCTGCCGAGGAGGCTGACGGCACCCGACACC
CACCTTGGCTTACCTGCCGGGGCCAGCCAGCCTGCCCTGACCAGCTCTCGGGTCTGCTTCCCTGAGCGG
ATTTTGGAAAGATTCTGGCTTTGATGAGCAGCAGGAGTTTCGGTCTCGGTGCAGCAGTGTACCCGGCGTG
CAACGGAGAGTTACGAGGGCAGCCAGAAATCCAGCCGCGAGACACGCGAGCGCAGCCAGTAC
GTCCAGCCCTCGGACTCGGAGAAGAACAGGACCATGCTCTTCCAGGTTGGGCGATTTGAGATTAACCTT
ATCAGTCCAGACTAAATCAGTTGTGCTAGAAAAGAATTTAAAGATATCTCCTTGTCTCAGGGT
ATAAAGCATGTGGATCACTTTGGCTTTATCTGCCGGGAGTCTCCAGAGCCTGGACTTAGCCAGTATATT
TGTTATGTATTCCAGTGTGCCAGCGAATCTCTGGTTGATGAGGTAATGCTGACTCTGAAACAGGCCCTTC
AGTACGGCGGCTGCCCTGCAGAGTGCCAAGACGCAGATTAACCTGTGTGAGGCTGCCGATGCACTCT
TTGCATAAGCTCTGTGAAAGGATTGAAGGCTCTACCCACCAAGGCCAAGCTGGTGATACAGAGGCAT
CTCTCACTGACAGATAATGAGCAAGCTGACATCTTTGAAAGAGTTTCAGAAAAAGGACAGTCAGT
```



[View online »](#)

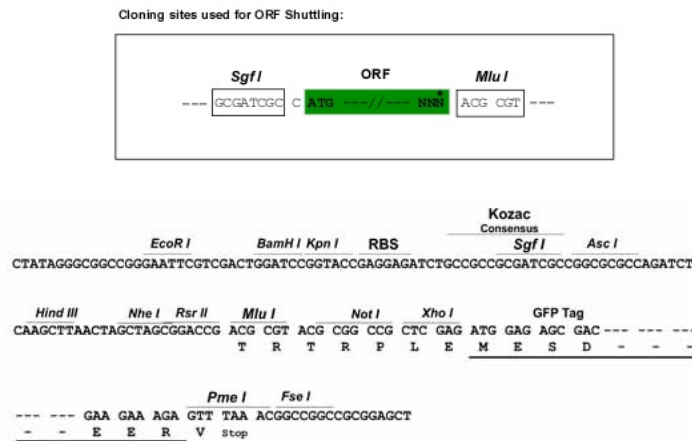
GACCAGGAAGAAAATGAACTTGTGATTTTACACCTGAGGCAGCTGTGTGAAGCCAAGCAGAAGACACAC
GTGCACATCGGGGAAGGCCCTTCTACTATTTCAAATAGTACAATCCCAGAAAATGCAACAAGCAGTGGA
AGGTTCAAACCTTGACATTCTGAAAAATAAAGCTAAGAGATCCTTAACTAGCTCCCTGGAAAAATCTTC
TCAAGGGGAGCTAACAGAATGAGAGGTCGGCTTGGAAAGTGTGGACAGTTTTGAACGGTCCAACAGCTT
GCTTCAGAGAAGGACTACTCACCAGGGGATTCTCCACCAGGGACACCGCCAGCGTCCCCACCGTCTCA
GCTTGGCAAACGTTTTCCGAAGAGGATTCCGACTCCCCGAGTTTTCGAAGACGGGCACACACGTTTCAGC
CACCCACCTTCAAGCACAAAGAGAAAAGCTGAATTTGCAGGATGGGAGGGCTCAGGTGTGGCTTCCCT
CTGCTGAGGCAGAGCTCCAGTGAACAGTGCAGTGATGGAGAAGGGAGAAAAGGACCTCATCTACCTGC
AGCAATGAGTCCCTAAGTGTGGGAGGAACCTCTGTCACTCCTCGCCGGATCTCCTGGCGGCAGCGCATT
TTCCTCAGGGTTGCTTCTCCCATGAACAAATCTCCCTCAGCAATGCAACAGCAAGATGGATTGGACAGG
AACGAGCTGTGCCACTGTCCCCCTCTCTCAACCATGGAGGAGGAACCGCTGGTTGTATTCTGTCT
GGGGAGGATGACCAGAAAAGATTGAAGAAAGAAAAGAAATCAAAAGAAGTGAAGGAGCTTGTGGAGAAA
GCTATACACCAACAAATCTTGTACTTCGAATGGAAAAAGAAAACAGAACTTGAAGCAAGCAGAGAT
GAACTCCAGTCCAGAAAAGTTAAATTAGACTATGAAGAAGTTGGTGCATGTCAGAAAGAGGTCTTAATA
ACTTGGGATAAGAAGTTGTTAACTGCAGAGCTAAAATCAGATGTGATATGGAAGATATTCATACTCTT
CTTAAAGAAGGAGTTCCCAAAAGTCGACGAGGAGAAAATTTGGCAGTTTTCTGGCTTACAGTACCGACTC
AGACACAGATTGCCTAATAAACAACAGCCTCCTGACATATCCTATAAGGAACTTTTGAAGCAGCTCACT
GCTCAGCAGCATGCGATTCTCGTGGATTAGGAAGGACGTTTCTACTCACCTTACTTTTCAGTACAG
CTTGGGCCAGGACAGCTGTCACTGTTTAACTCCTGAAAGCCTATTCTTTGCTGGACAAAGAAGTGGGA
TACTGTCAGGGGATCAGCTTGTGGCTGGAGTCTGCTTCTGCACATGAGTGAAGAGCAAGCCTTTGAA
ATGCTGAAATTCCTCATGTATGACCTCGGCTCCGCAAGCAGTACAGACCTGACATGATGTCGCTGCAG
ATTCAAATGTACCAGCTGTCCAGGCTCCTTCATGACTATCACAGAGATCTCTACAATCACCTTGAAGAA
AATGAAATCAGCCCCAGTCTTTATGCTGCCCTGGTTCCCTCACATTGTTTGCCTCTCAGTTTTTCATTA
GGATTTGTAGCCAGAGTTTTTGATATTATTTTTCTTCAGGGAAGTGAAGTTATATTCAAGGTTGCACTC
AGCCTACTGAGCAGCAAGAGACACTTATAATGGAATGTGAGAGCTTTGAAAATATTGTTGAGTTTCTT
AAAAACACGCTACCTGATATGAATACCTGAAATGGAAAAAATTATTACCCAGTTTTTTGAGATGGAT
ATTTCTAAGCAGTTGCATGCCTATGAGGTGGAATATCATGTGCTACAGGATGAGCTTCAGGAATCTTCA
TATTCCTGTGAGGATAGTAAAATTTGGAGAAGCTGGAGAGGGCCAATAGCCAAGTAAAAGACAAAAC
ATGGACCTCCTAGAAAAATTACAGGTAGCTCATACTAAAATCCAGGCCTTGAATCAAACCTGGAAAAT
CTTTTACGAGAGAGACCAAAAATGAAGTCTTTAATCCGGACCCTGGAACAAGAAAAAATGGCTTATCAA
AAGACAGTGGAGCAACTCCGGAAGCTGCTGCCCGCGGATGCTCTAGTCAATTGTGACCTGTTGCTGAGA
GACCTAACTGCAACCCTAACAACAAAGCAAGATAGGAAATAAGCCA
ACGCGTACGCGGCCGCTCGAG - GFP Tag - GTTTAAAC

Protein Sequence: >Peptide sequence encoded by RG240068
 Blue=ORF Red=Cloning site Green=Tag(s)

MEPPSCIQDEPFPHPLEPEPGVSAQPGPGKPSDKRFRLLWYVGGSCLDHRTTLPMLPWLMAEIRRRSQKP
 EAGGCGAPAAREVILVLSAPFLRCVPAPGAGASGGTSPSATQPNPAVFI FEHKAQHSRIFHNSHDLTY
 FAYL IKAQPDDPESQMACHVFRATDPSQVPDVISSIRQLSKAAMKEDAKPSKDNEDAFYNSQKFEVLYC
 GKVTVTHKKAPSSLIDDCMEKFSLHEQQRLKIQQEQRGPDPGEDLADLEVVPVPGSPGDCLPEEADGTD
 HGLPAGASQPALTSRRCVCFPERILEDSEGFDEQQEFRSRCSVTVGQRRVHEGSQKSPRRRHASAPSH
 VQPSDSEKNRTMLFQVGRFEINLISPDTKSVVLEKNFKDSSSCSQGIKHVDHFGFICRESPEPGLSQYI
 CYVFCASESLVDEVMLTLKQAFSTAAALQSAKTQIKLCEACPMHSLHKLCEIEGLYPPRAKLVQRH
 LSSLTDNEQADIFERVQKMPVSDQEEENLVILHLRQLCEAKQKTHVHIGEGPSTISNSTIPENATSSG
 RFKLDILKNKAKRSLTSSLENIFSRGANMRGRGLGSVDSFERSNSLASEKDYSPGDSPPTPPASPPSS
 AWQTFPEEDSDSPQFRRRAHTFSHPSSSTRKRLNLQDGRAQGVRSPLLRQSSSEQSDGEGKRKTSSTC
 SNESSLVGGT SVTPRRI SWRQRI FLRVASPMNKSPSAMQQDGLDRNELLPLSPLSPTMEEELVFLS
 GEDDPEKIEERKSKELRSLWRKAIHQQILLRMEKENQKLEASRDELQSRVKLDYEEVGCQKEVLI
 TWDKLLNCRAKIRCDMEDIHTLLKEGVPKSRGEIWQFLALQYRLRHRLPNKQQPPDISYKELLKQLT
 AQQHAILVDLGRTFPTHYFVSVQLGPGQLSLFNLLKAYSLLDKEVGYCQGISFVAGVLLLMHSEEQAFE
 MLKFLMYDLGFRKQYRPDMMSLQIQMYQLSRLLDHYHRDLYNHLEENEISPSLYAAPWFLTLFASQFSL
 GFVARVFDIIFLQGTVEIFKVALSLLSSQETLIMECESFENIVEFLKNTLPDMNTSEMEKIITQVFEMD
 ISKQLHAYEVEYHVLQDELQESSYSCEDSETLEKLERANSQKLRQNMDDLLEKLQVAHTKIQALESNLEN
 LLTRETMMKSLIRTLEQEKMAQKTVEQLRKL LPADALVNCDDLLRDLNCPNPKAKIGNK
TRTRPLEME**SD**ESGLPAMEIECRITGTLNGVEFELVGGGEGTPEQGRMTNKMSTKGALTFSPYLLSHV
 MGYGFYHFGTYPSTYENPFLHA INNGGYTNTRIEKYEDGGVHVSVFSYRYEAGRVIGDFKVMGTGFPEP
 SVIFTDKIIRSNATVEHLHPMGDNDLDGSFTRTFSLRDGGYSSVVDVSHMHFKSAIHP SILQNGGPMFA
 FRRVEEDHSNTELGIVEYQHAFKTPDADAGEERV

Restriction Sites: SgfI-MluI

Cloning Scheme:

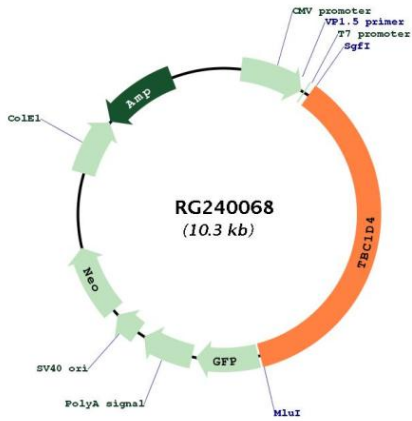


ACCN: NM_001286659

ORF Size: 3705 bp

OTI Disclaimer:	Due to the inherent nature of this plasmid, standard methods to replicate additional amounts of DNA in E. coli are highly likely to result in mutations and/or rearrangements. Therefore, OriGene does not guarantee the capability to replicate this plasmid DNA. Additional amounts of DNA can be purchased from OriGene with batch-specific, full-sequence verification at a reduced cost. Please contact our customer care team at custsupport@origene.com or by calling 301.340.3188 option 3 for pricing and delivery.
	The molecular sequence of this clone aligns with the gene accession number as a point of reference only. However, individual transcript sequences of the same gene can differ through naturally occurring variations (e.g. polymorphisms), each with its own valid existence. This clone is substantially in agreement with the reference, but a complete review of all prevailing variants is recommended prior to use. More info
OTI Annotation:	This clone was engineered to express the complete ORF with an expression tag. Expression varies depending on the nature of the gene.
Components:	The ORF clone is ion-exchange column purified and shipped in a 2D barcoded Matrix tube containing 10ug of transfection-ready, dried plasmid DNA (reconstitute with 100 ul of water).
RefSeq:	NM_001286659.2
RefSeq Size:	6200 bp
RefSeq ORF:	3708 bp
Locus ID:	9882
UniProt ID:	O60343
Cytogenetics:	13q22.2
MW:	140 kDa
Gene Summary:	This gene is a member of the Tre-2/BUB2/CDC16 domain family. The protein encoded by this gene is a Rab-GTPase-activating protein, and contains two phosphotyrosine-binding domains (PTB1 and PTB2), a calmodulin-binding domain (CBD), a Rab-GTPase domain, and multiple AKT phosphomotifs. This protein is thought to play an important role in glucose homeostasis by regulating the insulin-dependent trafficking of the glucose transporter 4 (GLUT4), important for removing glucose from the bloodstream into skeletal muscle and fat tissues. Reduced expression of this gene results in an increase in GLUT4 levels at the plasma membrane, suggesting that this protein is important in intracellular retention of GLUT4 under basal conditions. When exposed to insulin, this protein is phosphorylated, dissociates from GLUT4 vesicles, resulting in increased GLUT4 at the cell surface, and enhanced glucose transport. Phosphorylation of this protein by AKT is required for proper translocation of GLUT4 to the cell surface. Individuals homozygous for a mutation in this gene are at higher risk for type 2 diabetes and have higher levels of circulating glucose and insulin levels after glucose ingestion. Alternative splicing results in multiple transcript variants encoding different isoforms. [provided by RefSeq, Aug 2015]

Product images:



Circular map for RG240068