

## Product datasheet for **RG240046**

### SMC1 (SMC1A) (NM\_001281463) Human Tagged ORF Clone

#### Product data:

Product Type:	Expression Plasmids
Product Name:	SMC1 (SMC1A) (NM_001281463) Human Tagged ORF Clone
Tag:	TurboGFP
Symbol:	SMC1
Synonyms:	CDLS2; DEE85; DXS423E; EIEE85; SB1.8; SMC1; SMC1alpha; SMC1L1; SMCB
Mammalian Cell Selection:	Neomycin
Vector:	pCMV6-AC-GFP (PS100010)
E. coli Selection:	Ampicillin (100 ug/mL)
ORF Nucleotide Sequence:	>RG240046 representing NM_001281463. Blue=ORF Red=Cloning site Green=Tag(s)

```
GCTCGTTTGTAGTGAACCGTCAGAATTTTGTAAACGACTCACTATAGGGCGCCGGGAATTCGTCGACTG
GATCCGGTACCGAGGAGATCTGCCGCCGCGATCGCC
ATGCTTGAGGTGTCGATCCCCACCCACCCTATGTCAGAGGTAAGTCAAATCTCATGGATGCCATC
AGCTTTGTGCTAGGTGAAAAACAGCAACCTGCGGGTAAAGACCCTGCGGGACCTGATCCATGGAGCT
CCTGTGGCAAGCCAGCTGCCAACCGGGCCTTTGTGAGCATGGTCTACTCTGAGGAGGTTGCTGAGGAC
CGTACCTTTGCCGTGTCATTGTAGGAGGTTCTCTGAGTACAAGATCAACAACAAAGTGGTCCAATA
CATGAGTACAGTGAAGATTAGAGAAGTTGGGCATTCTCATCAAAGCTCGTAACCTCCTCGTTTTCCAG
GGTGTGTGGAATCTATTGCCATGAAGAACCCAAAGAGAGGACAGCTCTATTTGAAGAGATTAGTCGT
TCTGGGGAGCTGGCGCAGGAGTATGACAAGCGAAAGAAGGAAATGGTGAAGGCTGAAGAGGACACACAG
TTTAATTACCATCGCAAGAAAAATATTGCGGCTGAACGCAAGGAAGCAAGCAGGAGAAAGAAGAGGCT
GACCGGTACCAGCGCCTGAAGGATGAGGTAGTACGGGCTCAGGTACAGCTGCAGCTCTTTAAGCTTTAC
CATAATGAAGTGGAAATTGAGAAGCTCAACAAGGAAGTGGCTCAAGAACAAGGAGATCGAGAAGGAC
AAGAAGCGTATGGACAAGGTGGAGGATGAAGTGAAGGAGAAGAAGAAGGAGCTGGCAAAATGATGCGG
GAGCAGCAGCAGATTGAGAAGGAGATCAAGGAGAAGGACTCAGAATTGAACCAGAAGCGGCTCAGTAC
ATCAAAGCCAAGGAGAACACCTCCACAAAATCAAGAAGCTGGAAGCAGCCAAGAAGTCTCTGCAGAA
GCTCAGAAGCACTACAAGAAGCGTAAAGGTGACATGGATGAGCTGGAGAAGGAGATGCTGTCAGTGGAG
AAGGCTCGGCAGGAGTTTGAAGAACGGATGGAAGAAGAGAGTCAAGTCAAGGAGGAGATTGACGTTG
GAGGAGAATCAGGTGAAGAAATACCACCGGTTGAAGAAGAAGCCAGCAAGAGAGCAGCTACCCTGGCC
CAGGAGCTGGAGAAATCAATCGAGACCAGAAAGCTGACCAGGACCGTCTGGATCTGGAAGAACGGAA
AAAGTAGAGACAGAGGCCAAGATCAAGCAAAAGCTGCGGGAAATTGAAGAGAATCAGAAGCGGATTGAG
AAACTGGAGGAATACATCACCCTAGCAAGCAGTCCCTAGAAGAGCAGAAGAAGCTAGAGGGGGAGCTG
ACAGAGGAGGTGGAGATGGCCAAGCGGCGTATTGATGAAATCAATAAGGAGCTGAACCAGGTGATGGAG
CAGCTAGGGGATGCCCGCATCGACCGCCAGGAGAGCAGCCGCCAGCAGCGAAAGGAGAGATAATGGAA
AGCATCAAGCGCCTTTACCTGGCTCTGTGACGCGCCCTCATTGACCTATGCCAGCCACACAAAAG
```



[View online »](#)

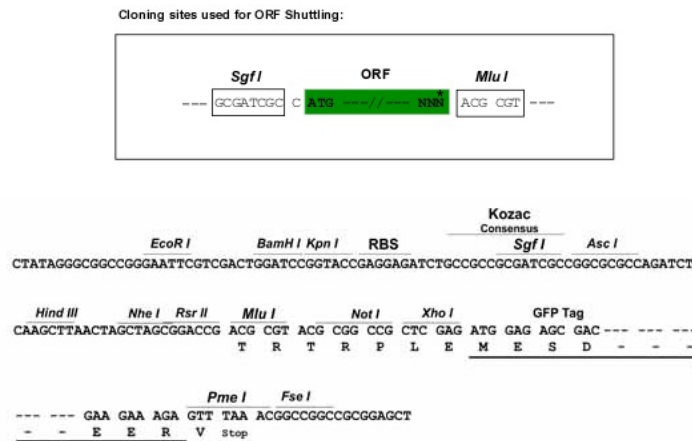
AAGTATCAGATTGCTGTAACCAAGGTTTTGGGCAAGAACATGGATGCCATTATTGTGGACTCGGAGAAG  
ACAGGCCGGGACTGTATTCAAGGAGCAGCGTGGGAGCCTGAGACCTTCTTGCCCTTGAC  
TACCTGGAGGTGAAGCCTACAGATGAGAACTCCGGGAGCTGAAGGGGCCAAGCTAGTGATTGATGTG  
ATTCGCTATGAGCCACCTCATATCAAAAAGGCCCTGCAGTATGCTTGTGGCAATGCCCTTGTCTGTGAC  
AACGTGGAAGATGCCCGCCGATTGCCCTTGGAGGCCACCAGCGCCACAAGACAGTGGCACTGGATGGA  
ACCCTATTCCAGAAGTCAGGAGTGTCTCTGGTGGGCCAGTGACCTGAAGGCCAAGGCACGGCGCTGG  
GATGAGAAAGCAGTAGACAAGTTGAAAGAGAAGAAGGAGCGCTTGACAGAGGAGCTGAAAGAGCAGATG  
AAGGCAAAACGGAAAGAGGCAGAGCTGCCGTCAGGTGCAGTCTCAGGCCATGGACTGCAGATGCCGCTC  
AAGTACTCCCAGAGTGACCTAGAACAGACCAAGACACGACATCTAGCCCTGAATCTGCAGAAAAATCC  
AAGCTGGAGAGTGAGCTAGCCAACCTTTGGGCTCGCATTAAATGATATCAAGAGGATCATTAGAGCCGA  
GAGAGGAAATGAAAGACTTGAAGGAGAAGATGAACCAGGTAGAGGATGAGGTGTTTGAAGATTTTGT  
CGGAGATTGGTGTGCGCAACATCCGGGAGTTGAGGAAGAAAAGGTGAAACGGCAGAATGAAATCGCC  
AAGAAGCGTTTGGAGTTTGAATCAGAAGACTCGCTTGGCATTGAGTTGGATTTTGAAGAACCAA  
CTGAAGGAGGACCAAGATAAAGTACACATGTGGGAGCAGACAGTAAAAAAGATGAAATGAGATAGAA  
AAGCTCAAAAAGGAGGAACAAAGACACATGAAGATCATAGATGAGACCATGGCTCAGCTACAAGACCTG  
AAGAATCAGCATCTGGCCAAGAAGTCGGAAGTGAATGACAAGAATCATGAGATGGAGGAGATTTCGTAA  
AACTCGGGGGCCCAACAAGGAAATGACCCATTTACAGAAGGAGGTGACAGCCATTGAGACCAAGCTT  
GAACAGAAGCGCAGTGACCGTCACTTGTACAGGCCTGTAAGATGCAGGACATTAAGTTGCCACTG  
TCAAAAAGGCACCATGGATGATATTAGTCAGGAAGAGGGTAGTCCCAGGGGGAGGACTCAGTGAGTGGT  
TCACAGAGAATTTCCAGTATCTATGCACGAGAGGCCCTCATTGAGATTGACTACGGTGTCTGTGTGAG  
GATCTGAAGGATGCCAGGCTGAGGAAGAGATCAAGCAAGAGATGAACACACTGCAGCAGAAGCTGAAT  
GAGCAGCAGAGTGTGCTTACCGTATTGCCGCCCAACATGAAGGCCATGAAAAAGCTGAAAAGTGTG  
CGAGACAAGTTCCAGGAGACCTCAGATGAGTTTGAAGCAGCCGAAAGCGAGCAAAGAAGGCCAAGCAG  
GCATTCGAACAGATCAAGAAGGAGCGCTTTGACCGCTTCAATGCTTGTGTTTGAATCTGTGGCTACCAAC  
ATTGATGAGATCTATAAGGCCCTGTCCCCAATAGCAGTGCCAGGCATTCTGGGCCCTGAGAACCCT  
GAAGAGCCCTACTTGGATGGCATCACTACAACCTGTGTGGCTCCTGGAAACGCTTCCGGCCTATGGAC  
AACTTGTGAGGCGGGGAGAAGACAGTGGCAGCTCTGGCCCTGCTCTTGGCATCCACAGCTACAAGCCA  
GCCCCCTTCTTCGTCTGGATGAGATTGATGCTGCCTGGATAACACCAACATTGGCAAGGTGGCAAT  
TACATCAAGGAGCAGTCGACTTGAACCTCCAGGCCATCGTCATCTCTCAAGGAGGAGTTCTACACC  
AAGGCCGAGAGCCTCATTGGAGTCTATCCTGAGCAAGGGGACTGTGTGATCAGCAAAGTCTGACCTTC  
GACCTACCAAGTACCCAGATGCCAACCCCAACCCCAATGAGCAG  
ACGCGTACGCGGCCGCTCGAG - GFP Tag - GTTTAAAC

Protein Sequence: >Peptide sequence encoded by RG240046  
 Blue=ORF Red=Cloning site Green=Tag(s)

MLEVSIPTPHRYVRGKSNLMDAISFVLGEKTSNLRVKTLRDLIHGAPVVGKPAANRAFVSMVYSEEGAED  
 RTFARVIVGGSSEYKINNKKVVLHEYSEELEKLGILIKARNFLVFQGAVESTIAMKNPKERTALFEEISR  
 SGELAQEYDKRKKEMVKAEDTQFNHYHRKKNIAAERKEAKQEKEEADRYQRLKDEVVRAQVQLQFLKLY  
 HNEVEIEKLNKELASKNKEIEKDKKRMVKVEDELKEKKELGKMMREQQQIEKEIKEKDSSELNQKRPQY  
 IKAKENTSHKIKKLEAAKKSQAQKHYYKRRKGDMDLEKEMLSVEKARQEFEEEMEEESQGRDLTL  
 EENQVKKYHRLKEEASKRAATLAQELEKFNDRDQKADQDRDLDEERKKVETEAKIKQKLREIEENQKRIE  
 KLEEYITTSKQSLQKLEGELETEEVEMAKRRIDEINKELNQVMEQLGDARIDRQESSRQORCAEIME  
 SIKRLYPGSVYGRIDLQPTQKKYQIAVTKVLGKNMDAIIVDSEKTGRDCIQYIKEQRGEPETFLPLD  
 YLEVKPTDEKRELKGAQLVIDVIRYEPPIKALQYACGNALVCDNVEDARRIAFGGHQRHKTVALDG  
 TLFQKSGVISGGASDLKAKARRWDEKAVDKLKEKKERL TEELKEQMKAKRKEAELRQVQSAHGLQML  
 KYSQSDLEQTKRHLALNLQEKSKLESELANFGPRINDIKRIIQSREREMKDLKEKMNQVEDEVFEFC  
 REIGVRNIREFEEKVKRQNEIAKKRLEFENQKTRLGIQLDFEKNQLKEDQDKVHMWEQTVKKDENEIE  
 KLKKEEQRHMKIIDETMAQLQDLKNQHLAKKSEVNDKNHEMEEIRKKLGGANKEMTHLQKEVTAIETKL  
 EQKRSDRHNLQACKMQDIKPLSKGTMDISQEEGSSQGEDSVSGSQRTSSIIYAREALIEIDYDGLCE  
 DLKDAQAEIEIKQEMNTLQKLNQVSLQRIAAPNMKAMEKLESVRDKFQETSDEFEAARKRAKKAKQ  
 AFEQIKKERFRFNACFESVATNIDEIYKALSRNSSAQAF LGPENPEEPLYDGINYNVAPGKFRPMD  
 NLSGGEKTVAAALALLFAIHSYKPAFFVLDEIDAALDNTNIGKVANYIKEQSTCNFQAIIVSLKEEFT  
 KAESLIGVYPEQGDVCSKLVTFDLTKYPDANPNNEQ  
**TRTRPLEMESDESGLPAMEIECRITGTLNGVEFELVGGEGTPEQGRMTNKMSTKGALTFSPYLLSHV**  
 MGYGFYHFGTYPSTYENPFLHAINNGGYNTRIEKYEDGGVLHVSFSYRYEAGRVIGDFKVMGTGFPED  
 SVIFTDKIIRSNATVEHLHPMGDNDLDGSFTRTFLRDGGYSSVVD SHMHFKSAIHP SILQNGGPMFA  
 FRRVEEDHSNTELGIVEYQHAFKTPDADAGEERV

Restriction Sites: Sgfl-MluI

Cloning Scheme:

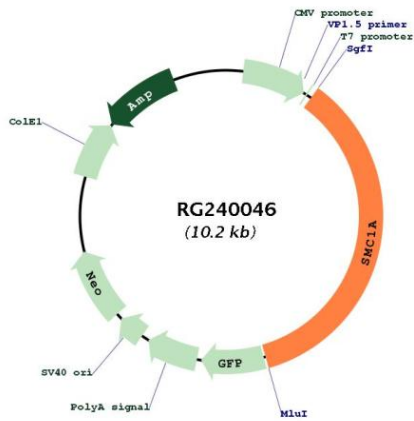


ACCN: NM\_001281463

ORF Size: 3633 bp

<b>OTI Disclaimer:</b>	The molecular sequence of this clone aligns with the gene accession number as a point of reference only. However, individual transcript sequences of the same gene can differ through naturally occurring variations (e.g. polymorphisms), each with its own valid existence. This clone is substantially in agreement with the reference, but a complete review of all prevailing variants is recommended prior to use. <a href="#">More info</a>
<b>OTI Annotation:</b>	This clone was engineered to express the complete ORF with an expression tag. Expression varies depending on the nature of the gene.
<b>Components:</b>	The ORF clone is ion-exchange column purified and shipped in a 2D barcoded Matrix tube containing 10ug of transfection-ready, dried plasmid DNA (reconstitute with 100 ul of water).
<b>RefSeq:</b>	<a href="#">NM_001281463.1</a> , <a href="#">NP_001268392.1</a>
<b>RefSeq Size:</b>	9930 bp
<b>RefSeq ORF:</b>	3636 bp
<b>Locus ID:</b>	8243
<b>Cytogenetics:</b>	Xp11.22
<b>Protein Families:</b>	Druggable Genome
<b>Protein Pathways:</b>	Cell cycle, Oocyte meiosis
<b>MW:</b>	141.3 kDa
<b>Gene Summary:</b>	<p>Proper cohesion of sister chromatids is a prerequisite for the correct segregation of chromosomes during cell division. The cohesin multiprotein complex is required for sister chromatid cohesion. This complex is composed partly of two structural maintenance of chromosomes (SMC) proteins, SMC3 and either SMC1B or the protein encoded by this gene. Most of the cohesin complexes dissociate from the chromosomes before mitosis, although those complexes at the kinetochore remain. Therefore, the encoded protein is thought to be an important part of functional kinetochores. In addition, this protein interacts with BRCA1 and is phosphorylated by ATM, indicating a potential role for this protein in DNA repair. This gene, which belongs to the SMC gene family, is located in an area of the X-chromosome that escapes X inactivation. Mutations in this gene result in Cornelia de Lange syndrome. Alternative splicing results in multiple transcript variants encoding different isoforms. [provided by RefSeq, Jul 2013]</p>

Product images:



Circular map for RG240046