

Product datasheet for **RG240045**

PER3 (NM_001289862) Human Tagged ORF Clone

Product data:

Product Type:	Expression Plasmids
Product Name:	PER3 (NM_001289862) Human Tagged ORF Clone
Tag:	TurboGFP
Symbol:	PER3
Synonyms:	FASPS3; GIG13
Mammalian Cell Selection:	Neomycin
Vector:	pCMV6-AC-GFP (PS100010)
E. coli Selection:	Ampicillin (100 ug/mL)
ORF Nucleotide Sequence:	>RG240045 representing NM_001289862. Blue=ORF Red=Cloning site Green=Tag(s)

```
GCTCGTTTGTAGTGAACCGTCAGAATTTTGTAAACGACTCACTATAGGGCGCCGGGAATTCGTCGACTG
GATCCGGTACCGAGGAGATCTGCCGCCGCGATCGCC
ATGCCCGCGGGGAAGCTCCTGGCCCGGGAGACGGGGGGCTAAGGACGAGGCCCTGGGCGAAGAATCG
GGGAGCGGTGGAGCCCCGAGTTCATCTGCAGAGGAAATGGCGGACAGCAGCCACAGTGAACAGCAA
GATCGAAACAGAGTTTCTGAAGAACTTATCATGGTTGTCCAAGAAATGAAAAAATACTTCCCCTCGGAG
AGACGCAATAAACCAAGCACTCTAGATGCCCTCAACTATGCTCTCCGCTGTGTCCACAGCGTTCAAGCA
AACAGTGAGTTTTTCCAGATTCTCAGTCAGAATGGAGCACCTCAGGCAGATGTGAGCATGTACAGTCTT
GAGGAGCTGGCCACTATCGCTTCAAGACACTTCCAAAAACACAGATACCTTTGTGGCAGTATTTTCA
TTTCTGTCTGGAAGGTTAGTGCACATTTCTGAACAGGCTGCTTTGATCCTGAATCGTAAGAAAGATGTC
CTGGCGTCTTCTCACTTTGTTGACCTGCTTGACCTCAAGACATGAGGGTATTCTACGCGCACACTGCC
AGAGCTCAGCTTCTTTCTGGAACAACCTGGACCCAAAGAGCAGCTGCACGGTATGAATGTGCTCCGGTG
AAACCTTTTTTCTGCAGGATCCGTGGAGGTGAAGACAGAAAGCAAGAGAAGTGTCACTCCCCATTCGGG
ATCATCCCCTATCTGATTCATGTACATCACCTGCCAGCCAGAATTGGAATCGGAACCTTGCTGTCTC
ACTGTGGTTGAAAAGATTCACCTGTTTATGAAGCTCCTCGGATCCAGTGAATAAAGAATCTTCACC
ACCACACACACCCAGGGTGTGTTTTTCTGAAGTAGATGAAAAAGCAGTGCCTTTGCTGGGTTACCTA
CCTCAGGACCTGATTGGAACATCGATCCTAAGCTACCTGCACCCGAAGATCGTTCTGTAGGTTGCC
ATACACCAAAAAGTTTTGAAGTATGCAGGCATCCTCCCTTTGAACATTCTCCATTTCGATTTTGTACT
CAAAACGGAGACTACATCATACTGGATTCCAGTTGGTCCAGCTTTGTGAATCCCTGGAGCCGGAAGATT
TCTTTCATCATTGGTCCGCATAAAGTTCGAACGAGCCCACTAAATGAGGATGTTTTTGTACCAAAATT
AAAAAGATGAACGATAATGACAAAGACATAACAGAATTACAAGAACAATTTACAAAATTCTCTTACAG
CCAGTTACGTGAGCGTGTCCAGCGGCTACGGGAGCCTGGGGAGCAGCGGTCGAGGAGCAGCTTGTGTC
AGCATCGCTCCTCCAGTGAAGCCAGTGGGCACCGTGTGGAGGAGACGAAGGCGGAGCAGATGACCTTG
CAGCAGGCTATGCCAGTGTGAACAAAATTAATACTGGGTGAGCAGCTCTACATTGAGTCAATGACC
AAATCATCATTCAAGCCAGTGACGGGGACACGCACAGAACCGAATGGTGGTGGTGAATGAGTCAATGATGGT
```



[View online >](#)

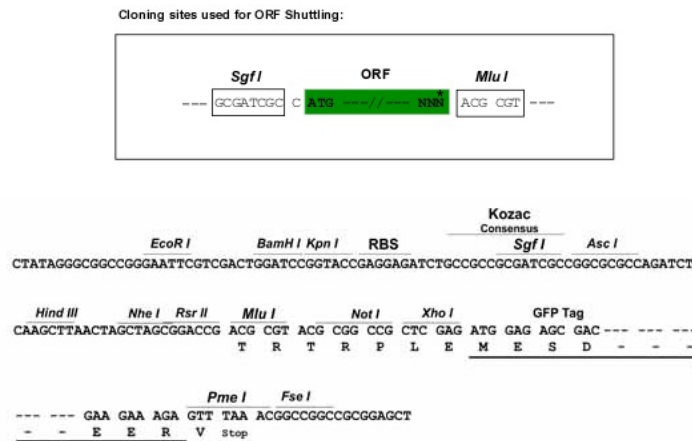
GGTGGTGAATGTAAGACCTTTACTTCCTCCACCAAACACTGAAAAACAATAGTGTGTACTGAGCCC
TGTGAGGATTTGAGGAACGATGAGCACAGCCCATCCTATCAACAGATCAACTGTATCGACAGTGTATC
AGATACCTGAAGAGCTACAACATTCCAGCTTTGAAAAGAAAGTGTATCTCCTGTACAAATACAATTCT
TCCTCCTCAGAAGAAGACAAACAGAACCACAAGGCAGATGATGTCCAAGCCTTACAAGCTGGTTTGCAA
ATCCCAGCCATACCTAAATCAGAAATGCCAACAAATGGACGGTCCATAGACACAGGAGGAGGCTCCA
CAGATCCTGTCCACGGCGATGCTGAGCTTGGGGTCGGGCATAAGCCAATGCGGTTACAGCAGCACCATT
GTCCATGTCCCACCCCCAGAGACAGCCAGGGATGCTACCCTCTTCTGTGAGCCCTGGACCCTGAACATG
CAGCCAGCCCCTTTGACCTCGGAAGAATTTAAACACGTGGGGCTCACAGCGGCTGTTCTGTGAGCGCAC
ACCCAGAAGGAAGAGCAGAATTATGTTGATAAATTCGAGAAAAGATCCTGTCATCACCCCTACAGCTCC
TATCTTCAGAAAGCAAGCAGGAGCAAAGCTAAATATTCATATTTTCAAGGAGATTCTACTTCCAAGCAG
ACGCGGTGCGCCGGCTGCAGGAAAGGGAAGCACAAAGCGGAAGAAGCTGCCGGAGCCGCCAGACAGCAGC
AGCTCGAACACCGGCTCTGGTCCCCGACGGGAGCGCATCAGAACGCACAGCCCTGCTGCCCTCCGCG
GCCTCCTCCTCCGACACCTCGAGCCGACCTTCCACCTGCCGCATGGTCCCAGCCAGGCCCTTAC
CTCGTCCCAGCTTTTCCCTCCCAGCCGCGACCTCACCCGGAAGAGAATACGCAGCCCCCGAACTGCA
CCGGAAGGCCATGATGGGCTGCCCTTGTCCGAGGGCTTGCAGCCTTACCCAGCTTTCCCTTTTCTTAC
TTGGATACTTTTATGACGTTTTCTGCCTGACCCCCCTGTCTGTCTCTGTTGTGCGCCATCGTTTTTG
CCATGTCCATTCCTGGGGGCGACAGCCTTCTTGCATATCACCCCTCAATGTCGTGAGCAATGAGTCCA
ACTCTGGACCCACCCCTTCACTCAGTACCAGCCAAAGGAGAGAGGAGGAAAAGTGGGAGGCACAAAGCGAG
GGGCACCCGTTTACTTTCGAGAAGCAGCTCACCCCTTGCAGTTAACTTACTTCAGGAAGAGATGCCC
AGACCCCTGAACTCTCCAGATCAGATGAGAAGGAACACGTGCCACAAACTGAGTATCAGTGTGTTACA
GGCAACAATGGCAGTGAGAGCAGTCTGCTACTACCGGTGCACTGTCCACGGGGTCACTCCCAGGGAG
AATCCATCCCATCCTACTGCCAGCGCTGTGCCACAGGATCGCCTCCCATGAAGAATCCATCCCATCCT
ACTGCCAGCGCTGTGCCACAGGATCGCCTCCCATGAAGAATCCATCCCATCCTACTGCCAGCACACTG
TCCATGGGATTGCCTCCCAGCAGGACTCCATCCCATCCTACTGCCACTGTTCTGTCCACGGGGTCACT
CCCAGCGAATCCCATCCAGAAGTGGTTCAGCAGCATCAGGAAGCAGCGACAGCAGTATATACCTTACT
AGTAGTGTATTCTTCTAAAATCTCCAAAATGGGCAGCAATCTCAGGACGTACAGAAAAAAGAAACA
TTTCTAATGTCGCCGAAGAGCCCATCTGGAGAATGATACGGCAGACACCTGAGCGCATTCTCATGACA
TACCAGGTACCTGAGAGGGTTAAAGAAGTTGACTAAAAGAAGACCTGGAAAAGCTAGAAAAGTATGAGG
CAGCAGCAGCCCCAGTTTTCTCATGGGCAAAGGAGGAGCTGGCTAAGGTGTATAATTGGATTCAAAGC
CAGACTGTCACTCAAGAAATCGACATTCAGCCTGTGTCCTTGTGAAAATGAAGATTACAGCTGATGGT
GCGGCCACATCCTGTGGTCAGGTTCTGGTAGAAGACAGCTGT
ACGCGTACGCGGCCGCTCGAG - GFP Tag - GTTTAAAC

Protein Sequence: >Peptide sequence encoded by RG240045
 Blue=ORF Red=Cloning site Green=Tag(s)

MPRGEAPGPRRGAKDEALGEESGERWSPEFHLQRKLADSSHSEQDRNRVSEELIMVVQEMKKYFPSE
 RRNKPSTLDALNYALRCVHSVQANSEFFQILSQNGAPQADVSMYSLEELATIASEHTSKNTDTFFVAVFS
 FLSGRLVHISEQAALILNRKKDVLASSHFVDLLAPQDMRVFYAHTARAQLPFWNNWTQRAAARYECAPV
 KPFFCRIRGGEDRKQEKCHSPFRIIPYLIVHHPAQPELESEPCCLTVVEKIHSGYEAPRIPVKNRIFT
 TTHTPGCVFLEVDEKAVPLLGYLPQDLIGTSLILSYLHPEDRSLMVAIHQKVLKYAGHPPFEHSPIRFCT
 QNGDYIILDSSWSSFVNPWSRKISFIIIGRHKVRTSPLNEDVFATKIKKMNDNDKDITELQEIQIYKLLQ
 PVHVSVSSGYSLGSSGSQEQLVSIASSSEASGHRVEETKAEQMTLQQVYASVNIKIKNLGQQLYIESMT
 KSSFKPVGTGRTEPNGGESANGGGECKTFTSFHQTLKNNSVYTEPCEDLRNDEHSPSYQQINCIDSVI
 RYLKSYNIPALKRKCISCTNTTSSSEEDKQNHKADDVQALQAGLQIPAIKPKSEMPTNGRSIDTGGGAP
 QILSTAMLSLGSIGSQCGYSSTIVHVPPETARDATLFCPEWTLNMQPAPLTSEEFKHVGLTAAVLSAH
 TQKEEQNYVDKFKREKILSSPYSSYLQQESRSKAKYSYFQGDSTSKQTRSAGCRKGKHKRKKLPEPPDSS
 SSNTGSGPRRGAHQNAQCCPSAASSPHTSSPTFPPAAMVPSQAPYLVPAPFLPAATSPGREYAAPGTA
 PEGHLHGLPLSEGLQPYPAFFPYLDTFMTVFLPDPVPCPLLSPSFLPCPFLGATASSAISPSMSSAMSP
 TLDPPPSVTSQRREEEKWEAQSEGHPFITSRSSPLQLNLLQEEMPRPSESPDQMRRTCPQTEYQCVT
 GNNGSESSPATTGALSTGSPPRENPSHPTASALSTGSPPMKNPSHPTASALSTGSPPMKNPSHPTASTL
 SMGLPPSRTPSHPTATVLTGSPPESESPRTGSAASGSSDSSIYLTSSVYSSKISQNGQQSQDVQKKET
 FPNVAEETIWRMIRQTPERILMTYQVPERVKEVVLKEDLEKLESMRQQQPQFSGHQKEELAKVYNWIQS
 QTVTQEIDIQACVTCENEDSADGAATSCGQVLVEDSC
TRTRPLEMESDESGLPAMEIECRITGTLNGVEFELVGGEGTPEQGRMTNKMSTKGALTFSPYLLSHV
 MGYGFYHFGTYPSGYENPFLHAINNGGYTNTRIEKYEDGGVLHVSFSYRYEAGRVIGDFKVMGTGFPEP
 SVIFTDKIIRSNATVEHLHPMGDNDLDGSFTRTFLSLRDGGYSSVVDSHMHFKSAIHPSILQNGGPMFA
 FRRVEEDHSNTELGIVEYQHAFKTPDADAGEERV

Restriction Sites: SgfI-MluI

Cloning Scheme:

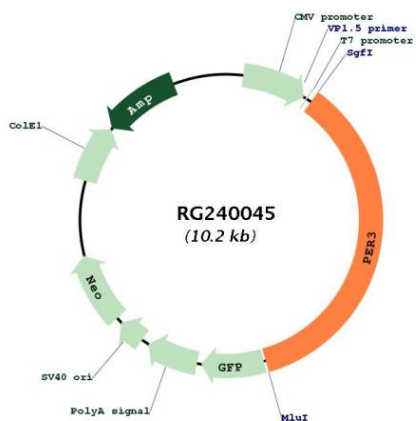


ACCN: NM_001289862

ORF Size: 3630 bp

OTI Disclaimer:	The molecular sequence of this clone aligns with the gene accession number as a point of reference only. However, individual transcript sequences of the same gene can differ through naturally occurring variations (e.g. polymorphisms), each with its own valid existence. This clone is substantially in agreement with the reference, but a complete review of all prevailing variants is recommended prior to use. More info
OTI Annotation:	This clone was engineered to express the complete ORF with an expression tag. Expression varies depending on the nature of the gene.
Components:	The ORF clone is ion-exchange column purified and shipped in a 2D barcoded Matrix tube containing 10ug of transfection-ready, dried plasmid DNA (reconstitute with 100 ul of water).
RefSeq:	NM_001289862.2
RefSeq Size:	6336 bp
RefSeq ORF:	3633 bp
Locus ID:	8863
UniProt ID:	P56645
Cytogenetics:	1p36.23
Protein Families:	Druggable Genome, Transcription Factors
Protein Pathways:	Circadian rhythm - mammal
MW:	133.1 kDa
Gene Summary:	This gene is a member of the Period family of genes and is expressed in a circadian pattern in the suprachiasmatic nucleus, the primary circadian pacemaker in the mammalian brain. Genes in this family encode components of the circadian rhythms of locomotor activity, metabolism, and behavior. This gene is upregulated by CLOCK/ARNTL heterodimers but then represses this upregulation in a feedback loop using PER/CRY heterodimers to interact with CLOCK/ARNTL. Polymorphisms in this gene have been linked to sleep disorders. Multiple transcript variants encoding different isoforms have been found for this gene. [provided by RefSeq, Jan 2014]

Product images:



Circular map for RG240045