

## Product datasheet for **RG240035**

### PER3 (NM\_001289861) Human Tagged ORF Clone

#### Product data:

Product Type:	Expression Plasmids
Product Name:	PER3 (NM_001289861) Human Tagged ORF Clone
Tag:	TurboGFP
Symbol:	PER3
Synonyms:	FASPS3; GIG13
Mammalian Cell Selection:	Neomycin
Vector:	pCMV6-AC-GFP (PS100010)
E. coli Selection:	Ampicillin (100 ug/mL)
ORF Nucleotide Sequence:	>RG240035 representing NM_001289861. Blue=ORF Red=Cloning site Green=Tag(s)

```
GCTCGTTTGTAGTGAACCGTCAGAATTTTGTAAACGACTCACTATAGGGCGCCGGGAATTCGTCGACTG
GATCCGGTACCGAGGAGATCTGCCGCCGCGATCGCC
ATGCCCGCGGGGAAGCTCCTGGCCCGGGAGACGGGGGGCTAAGGACGAGGCCCTGGGCGAAGAATCG
GGGGAGCGGTGGAGCCCCGAGTTCATCTGCAGAGGAAATTGGCGGACAGCAGCCACAGTGAACAGCAA
GATCGAAACAGAGTTTCTGAAGAAGTATCATGGTTGTCCAAGAAATGAAAAAATACTTCCCCTCGGAG
AGACGCAATAAACCAAGCACTCTAGATGCCCTCAACTATGCTCTCCGCTGTGTCCACAGCGTTCAAGCA
AACAGTGAGTTTTCCAGATTCTCAGTCAGAATGGAGCACCTCAGGCAGATGTGAGCATGTACAGTCTT
GAGGAGCTGGCCACTATCGTTCAGAACACACTTCCAAAAACACAGATACCTTTGTGGCAGTATTTTCA
TTTCTGTCTGGAAGGTTAGTGCACATTTCTGAACAGGCTGCTTTGATCCTGAATCGTAAGAAAGATGTC
CTGGCGTCTTCTCACTTTGTTGACCTGCTTGACCTCAAGACATGAGGGTATTCTACGCGCACACTGCC
AGAGCTCAGCTTCTTTCTGGAACAAGTGGACCCAAAGAGCAGCTGCACGGTATGAATGTGCTCCGGTG
AAACCTTTTTTCTGCAGGATCCGTGGAGGTGAAGACAGAAAGCAAGAGAAGTGTCACTCCCCATCCGG
ATCATCCCCTATCTGATTCATGTACATCACCTGCCAGCCAGAATTGGAATCGGAACCTTGCTGTCTC
ACTGTGGTTGAAAAGATTCACCTGTTTATGAAGCTCCTCGGATCCAGTGAATAAAAGAATCTTACC
ACCACACACACCCAGGGTGTGTTTTCTTGAAGTAGATGAAAAAGCAGTGCCTTTGCTGGGTTACCTA
CCTCAGGACCTGATTGGAACATCGATCCTAAGCTACCTGCACCCGAAGATCGTTCTGTAGGTTGCC
ATACACCAAAAAGTTTTGAAGTATGCAGGGCATCCTCCCTTTGAACATTCTCCATTTCGATTTTGTACT
CAAAACGGAGACTACATCATACTGGATTCCAGTTGGTCCAGCTTTGTGAATCCCTGGAGCCGGAAGATT
TCTTTTCATCATTGGTCCGCATAAAGTTCGAACGAGCCCACTAAATGAGGATGTTTTTGTACCAAAATT
AAAAAGATGAACGATAATGACAAAGACATAACAGAATTACAAGAACAATTTACAAAATTCTTTACAG
CCAGTTACGTGAGCGTGTCCAGCGGCTACGGGAGCCTGGGGAGCAGCGGTCGAGGAGCAGCTTGTG
AGCATCGCTCCTCCAGTGAAGCCAGTGGGCACCGTGTGGAGGAGACGAAGGCGGAGCAGATGACCTTG
CAGCAGGCTATGCCAGTGTGAACAAAATTAATACTGGGTGAGCAGCTCTACATTGAGTCAATGACC
AAATCATCATTCAAGCCAGTGAAGCCAGTGAAGCCAGTGAAGCCAGTGAAGCCAGTGAAGCCAGTGAAGCC
```



[View online >](#)

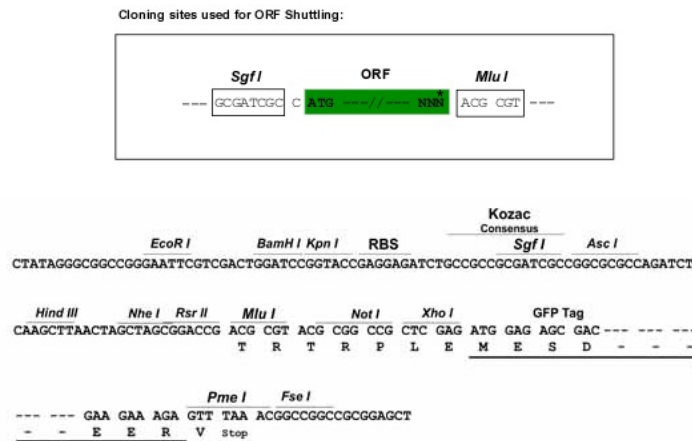
GGTGGTGAATGTAAGACCTTTACTTCCTCCACCAAACACTGAAAAACAATAGTGTGTACTGAGCCC  
TGTGAGGATTTGAGGAACGATGAGCACAGCCCATCCTATCAACAGATCAACTGTATCGACAGTGTATC  
AGATACCTGAAGAGCTACAACATTCCAGCTTTGAAAAGAAAGTGTATCTCCTGTACAAATACAATTCT  
TCCTCCTCAGAAGAAGACAAACAGAACCACAAGGCAGATGATGTCCAAGCCTTACAAGCTGGTTTGCAA  
ATCCCAGCCATACCTAAATCAGAAATGCCAACAAATGGACGGTCCATAGACACAGGAGGAGGAGCTCCA  
CAGATCCTGTCCACGGCGATGCTGAGCTTGGGGTCGGGCATAAGCCAATGCGGTTACAGCAGCACCATT  
GTCCATGTCCCACCCCCAGAGACAGCCAGGGATGCTACCCTCTTCTGTGAGCCCTGGACCCTGAACATG  
CAGCCAGCCCCTTGACCTCGGAAGAATTTAAACACGTGGGGCTCACAGCGGCTGTTCTGTGAGCGCAC  
ACCCAGAAGGAAGAGCAGAATTATGTTGATAAATTCAGAAAAGATCCTGTCATCACCCCTACAGCTCC  
TATCTTCAGAAAGCAAGCAGGAGCAAAGCTAAATATTCATATTTTCAAGGAGATTCTACTTCCAAGCAG  
ACGCGGTGCGCCGGCTGCAGGAAAGGGAAGCACAAAGCGGAAGAAGCTGCCGGAGCCGCCAGACAGCAGC  
AGCTCGAACACCGGCTCTGGTCCCCGACGGGAGCGCATCAGAACGCACAGCCCTGCTGCCCTCCGCG  
GCCTCCTCCTCCGACACCTCGAGCCGACCTTCCACCTGCCGCCATGGTCCCAGCCAGGCCCTTAC  
CTCGTCCCAGCTTTTCCCTCCCAGCCGCGACCTCACCCGGAAGAGAATACGCAGCCCCCGAACTGCA  
CCGGAAGGCCATGATGGGCTGCCCTTGTCCGAGGGCTTGACGCCCTTACCAGCTTTCCCTTTTCTTAC  
TTGGATACTTTTATGACCGTTTTCTGCCTGACCCCCCTGTCTGTCTCTGTTGTGCGCCATCGTTTTTG  
CCATGTCCATTCCTGGGGCGACAGCCTTCTGCGATATCACCCCTCAATGTCGTGAGCAATGAGTCCA  
ACTCTGGACCCACCCCTTCACTCAGTACCAGCCAAAGGAGAGAGGAGGAAAAGTGGGAGGCACAAAGCGAG  
GGGCACCCGTTTCACTTCGAGAAGCAGCTCACCCCTTGAGTAAACTTACTTCAGGAAGAGATGCC  
AGACCCCTGAACTCCTCAGATCAGATGAGAAGGAACACGTGCCACAAACTGAGTATTGTGTTACAGGC  
ACAATGGCAGTGAGAGCAGTCTGCTACTACCGGTGCACTGTCCACGGGTCACCTCCCAGGGAGAAT  
CCATCCCATCCTACTGCCAGCGCTCTGTCCACAGGATCGCCTCCCATGAAGAATCCATCCCATCCTACT  
GCCAGCACACTGTCCATGGGATTGCCCTCCAGCAGGACTCCATCCCATCCTACTGCCACTGTTCTGTCC  
ACGGGGTCACCTCCCAGCGAATCCCATCCAGAACTGGTTCAGCAGCATCAGGAAGCAGGCAGCAGCAGT  
ATATACCTTACTAGTAGTGTATTCTTCTAAAATCTCCCAAAATGGGCAGCAATCTCAGGACGTACAG  
AAAAAAGAAACATTTCTAATGTCGCCGAAGAGCCCATCTGGAGAATGATACGGCAGACACCTGAGCGC  
ATTCTCATGACATACCAGGTACCTGAGAGGGTTAAAGAAGTTGTACTAAAAGAAGACCTGGAAAAGCTA  
GAAAGTATGAGGCAGCAGCAGCCCCAGTTTTCTCATGGGCAAAGGAGGAGCTGGCTAAGGTGTATAAT  
TGGATTCAAAGCCAGACTGTCACTCAAGAAATCGACATTCAGCCTGTGTCACTTGTGAAAATGAAGAT  
TCAGCTGATGGTGGCCACATCCTGTGGTCAGGTTCTGGTAGAAGACAGCTGT  
ACGCGTACGCGGCCGCTCGAG – GFP Tag – GTTTAAAC

**Protein Sequence:** >Peptide sequence encoded by RG240035  
 Blue=ORF Red=Cloning site Green=Tag(s)

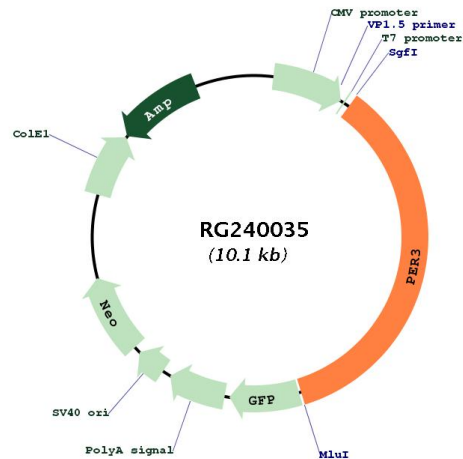
MPRGEAPGPRRGAKDEALGEESGERWSPEFHLQRKLADSSHSEQDRNRVSEELIMVVQEMKKYFPSE  
 RRNKPSTLDALNYALRCVHSVQANSEFFQILSQNGAPQADVSMYSLEELATIASEHTSKNTDTFFVAVFS  
 FLSGRLVHISEQAALILNRKKDVLASSHFVDLLAPQDMRVFYAHTARAQLPFWNNWTQRAAARYECAPV  
 KPFFCRIRGGEDRKQEKCHSPFRIIPYLIVHHPAQPELESEPCCLTVVEKIHSGYEAPRIPVNRIFT  
 TTHTPGCVFLEVDEKAVPLLGYLPQDLIGTSLILSYLHPEDRSLMVAIHQKVLKYAGHPPFEHSPIRFCT  
 QNGDYIILDSSWSSFVNPWSRKISFIIIGRHKVRTSPLNEDVFATKIKKMNDNDKDITELQEIQYKLLQ  
 PVHVSVSSGYSLGSSGSQEQLVSIASSSEASGHRVEETKAEQMTLQQVYASVNIKIKNLGQQLYIESMT  
 KSSFKPVGTGRTEPNGGESANGGGECKTFTSFHQTLKNNSVYTEPCEDLRNDEHSPYQQINCIDSVI  
 RYLKSYNIPALKRKCISCTNTTSSSEEDKQNHKADDVQALQAGLQIPAIKPKSEMPTNGRSIDTGGGAP  
 QILSTAMLSLGSIGSQCGYSSTIVHVPPETARDATLFCEPWTLMNQAPLTSSEFKHVGLTAAVLSAH  
 TQKEEQNYVDKREKILSSPYSSYLQQESRSKAKYSYFQGDSTSKQTRSAGCRKGKHKRKLPEPPDSS  
 SSNTGSGPRRGHQAQCCPSAASSPHTSSPTFPPAAMVPSQAPYLVPAPLPAATSPGREYAAPGTA  
 PEGHLHGLPLSEGLQYPAPFPYLDTFMTVFLPDPVCPLLSPSFLPCPFLGATASSAISPSMSSAMSP  
 TLDPPPSVTSQRREEEKWEAQSEGHPFITSRSSPLQLNLLQEEMPRPSESPDQMRRTCPQTEYCVTG  
 NNGSESSPATTGALSTGSPPRENSHPTASALSTGSPMKNPSHPTASTLSMGLPPSRTPSHPTATVLS  
 TGSPPESSPRTGSAASGSSDSSIYLTSSVYSSKISQNGQQSQDVQKKETFPNVAEPIWRMIRQTPER  
 ILMTYQVPERVKEVVLKEDLEKLESMRQQPQFSHGQKEELAKVYVNIQSQTVTQEIDIQACVTCENED  
 SADGAATSCGQVLVEDSC  
**TRTRPLEMESDESLPAMEIECRITGTLNGVEFELVGGEGTPEQGRMTNKMSTKGALTFSPYLLSHV**  
 MGYGFYHFGTYPSGYENPFLHAINNGGYTNTRIEKYEDGGVLHVSFSYRYEAGRVIGDFKVMGTGFPED  
 SVIFTDKIIRSNATVEHLHPMGDNDLDGSFTRTFLRDGGYSSVVDSHMHFKSAIHPSILQNGGPMFA  
 FRRVEEDHSNTELGIVEYQHAFKTPDADAGEERY

**Restriction Sites:** Sgfl-MluI

**Cloning Scheme:**



## Plasmid Map:



ACCN: NM\_001289861

ORF Size: 3573 bp

OTI Disclaimer: The molecular sequence of this clone aligns with the gene accession number as a point of reference only. However, individual transcript sequences of the same gene can differ through naturally occurring variations (e.g. polymorphisms), each with its own valid existence. This clone is substantially in agreement with the reference, but a complete review of all prevailing variants is recommended prior to use. [More info](#)

OTI Annotation: This clone was engineered to express the complete ORF with an expression tag. Expression varies depending on the nature of the gene.

Components: The ORF clone is ion-exchange column purified and shipped in a 2D barcoded Matrix tube containing 10ug of transfection-ready, dried plasmid DNA (reconstitute with 100 ul of water).

RefSeq: [NM\\_001289861.2](#)

RefSeq Size: 6279 bp

RefSeq ORF: 3576 bp

Locus ID: 8863

UniProt ID: [P56645](#)

Cytogenetics: 1p36.23

Protein Families: Druggable Genome, Transcription Factors

Protein Pathways: Circadian rhythm - mammal

MW: 131.2 kDa

**Gene Summary:**

This gene is a member of the Period family of genes and is expressed in a circadian pattern in the suprachiasmatic nucleus, the primary circadian pacemaker in the mammalian brain. Genes in this family encode components of the circadian rhythms of locomotor activity, metabolism, and behavior. This gene is upregulated by CLOCK/ARNTL heterodimers but then represses this upregulation in a feedback loop using PER/CRY heterodimers to interact with CLOCK/ARNTL. Polymorphisms in this gene have been linked to sleep disorders. Multiple transcript variants encoding different isoforms have been found for this gene. [provided by RefSeq, Jan 2014]