

Product datasheet for **RG239999**

DIS (CCAR1) (NM_001282959) Human Tagged ORF Clone

Product data:

Product Type:	Expression Plasmids
Product Name:	DIS (CCAR1) (NM_001282959) Human Tagged ORF Clone
Tag:	TurboGFP
Symbol:	DIS
Mammalian Cell Selection:	Neomycin
Vector:	pCMV6-AC-GFP (PS100010)
E. coli Selection:	Ampicillin (100 ug/mL)
ORF Nucleotide Sequence:	>RG239999 representing NM_001282959. Blue=ORF Red=Cloning site Green=Tag(s)

```
GCTCGTTTAGTGAACCGTCAGAATTTTGTAAACGACTCACTATAGGGCGGCCGGGAATTCGTCGACTG
GATCCGGTACCGAGGAGATCTGCCGCCGCGATCGCC
ATGGCTCAATTTGGAGGACAGAAGAATCCGCCATGGGCTACTCAGTTTACAGCCACTGCAGTATCACAG
CCAGCTGCACTGGGTGTTCAACAGCCATCACTCCTTGGAGCATCTCTACCATTTATACAGCAAACCT
GCATTGGCAGCAGCAGGCCTTACCACAAAACCTCCAGCAAACCTATCAGTTAACACAAAACCTGCTGCATTG
CAGCAACAAGCCGAGCTGCAGCAGCTGCATTACAACAGTTACAGCAACCCAGCAAACCCCTCTTAACA
CAGCCAGCTGTTGCACTGCCTACAAGCCTTAGCCTGTCTACTCCTCAGCCAACAGCACAAATAACTGTA
TCATATCCAACACCAAGGTCAGTCAACAGCAAACCCAGCCTCAGAAGCAGCGTGTTCACAGGGGTG
GTTACAAAACACTACATGATACGTTTGGATTTGTGGATGAAGATGATTCTTTTCAGCTTAGTGCTGTCAA
GGGAAAACCCCAAGTAGGTGACAGAGTATTGGTTGAAGCTACTTATAATCCTAATATGCCTTTTAAA
TGGAATGCACAGAGAATCAAACACTACCAAATCAGAATCAGTCGCAAACCCAGCCATTACTGAAGACT
CCTCCTGCTGACTTCAGCCAATTGCACCACAGACAACATTTGGTGTTCAGACTCAGCCCCAGCCCCAG
TCACTGCTGCAGGCACAGATTTCAGCAGCTTCTATTACACCACTATTGCAGACTCAACCACAGCCCTTA
TTACAGCAGCCTCAGCAAAAAGCTGGTTTATTGCAGCCTCCTGTTGATAGTTTACAGCCACAACCG
GCACGACGATTAGATCCCCATCCCGATTTTCAGGAAGAAATGACAGAGGGGATCAAGTGCCTAACAGA
AAAGATGATCGAAGTCGTGAGAGAGAGAGAAAGACGTAGATCGAGAGAAAGATCACCTCAGAGGAAA
CGTTCCCGGAAAGATCTCCACGAAGAGAGCGAGAGCGATCACCTCGGAGAGTTCGACGTGTTGTTCCA
CGTTACACAGTTCAAGTTTCAAAGTTTTCTTTAGATTGTCCCAGTTGTGACATGATGGAACCTAAGGCGC
CGTTATCAAAATTTGTATATACCTAGTGACTTTTTTGTGCTCAATTTACATGGGTGGATGCTTTCCCT
TTGTCAAGACCATTTTCAGCTGGGAAATTAAGCAATTTTATGTAATGCACAGAGAAGTAGAGTCCCTTA
GAAAAAATATGGCCATTTGATCCACAGATGCTGACCACTTATACAGTGCAAAGGTAATGCTGATG
GCTAGCCCTAGTATGGAAGATTTATATCATAAGTCATGTGCTCTTGCTGAGGACCCACAAGAAGTTCGA
GATGGATTCACATCCTGCTAGACTTGTTAAGTTTTAGTGGCATGAAAGGCAAGGATGAAGCTATG
GCCATTGGAGGCCACTGGTCTCCTTGGATGGACAGACCCAGAAAAAGATCCCTCTGTGTTGATT
AAGACTGCTATTGTTGTTGTAAGGCTCTGACAGGCATTGATCTAAGTGTGTGCACACAATGGTACCGT
TTTGCAGAGATTCGCTACCATCGCCCTGAGGAGACCCACAAGGGGCTACAGTTCAGCTCATGTGGAG
```



[View online >](#)

ACAGTGGTTTTATTTTTCCCGGATGTTTGGCATTGCCTTCCCACCCGCTCAGAGTGGGAAACCCTCTCC
 CGAGGATACAAGCAGCAGCTGGTCGAGAAGCTTCAGGGTGAACGCAAGGAGGCTGATGGAGAACAGGAT
 GAAGAAGAGAAGGATGATGGTGAAGCTAAAGAAATTTCTACACCTACCCATTGGTCTAAACTTGATCCA
 AAGACAATGAAGTAAATGACCTCCGAAAAAATTAGAAAAGTCGAGCTCTTAGTTCCAAAGGATTA
 TCCCAGTTAATAGCCCGATTGACAAAACAGCTTAAAGTAGAGGAACAAAAAGAAGACAGAAGGAGTTA
 GAGAAATCTGAAAAAGAAGGATGAGGATGATGATAGGAAATCTGAAGACGATAAAGAGGAAGAAGAA
 AGGAAACGTCAGAGGAAATAGAACGCCAGCGTCGAGAAAAGATATATTTTTGCCTGATGAACCGGCC
 ATCATTGTACATCCAAATTTGGGCTGCAAAAAGTGGCAAGTTGATTGTAGCATCATGTCTTTGAGTGTC
 CTATTGGACTACAGATTAGAGGATAATAAAGAACATTCATTTGAGGTTTCATTGTTTGCGGAACCTTTTC
 AACGAAATGCTTCAAAGAGATTTTGGTGTCCGTATATACAAATCATTACTGTCTCTTCTGAGAAAGAG
 GACAAAAAAGAAAAGGATAAAAAAGCAAAAAAGATGAGAGAAAAGATAAAAAAGAAGAAAGAGATGAT
 GAAACTGATGAACCAAAACCCAAACGGAGAAAATCAGGCGATGATAAAGATAAAAAAGAAGATAGAGAT
 GAAAGGAAGAAGAGATAAAAGAAAAGATGATTCTAAAGATGATGATGAAACTGAAGAAGATAACAAT
 CAAGATGAATATGACCCTATGGAAGCAGAAGAAGCTGAGGATGAAGAAGATGATAGGGATGAGGAAGAA
 ATGACCAACGAGATGACAAAAGAGATATCAACAGATACTGCAAGGAGAGGCCCTCTAAAGATAAGGAA
 AAAGAAAAGACTCAAATGATCACAATTAACAGAGATCTGTTAATGGCTTTTGTATTTTGTATCAAAAGT
 CATTGTGGTTACCTTCTGAAAAGGATTTGGAAGAAATACTTTTACTCTTGACTACATCTTTCTCGG
 GCTCAGGTAAGAAGCTTCTTAATAAGTAGTGCTCCGTGAATCTTGCTTTTACCGGAAATTAACAGAC
 ACCTCAAAGATGAAGAGAACCATGAAGAGTCTGAGTCATTGCAGGAAGATATGCTAGGAAACAGATTA
 TTACTTCCAACACCAACAGTAAAGCAGGAATCAAAGGATGTGGAAGAAAATGTTGGCCTCATTGTGTAC
 AATGGTGAATGGTAGATGTAGGAAGCCTTTCGAAAAATTGGAAAAGAGCGAAAAAGTAAAGAGCTGAG
 GTAGAACAAGAAGTGCAGTTACTAGAAGAAAAACAGATGAAGATGAAAAACCATATTAATTTGGAG
 AATTTCCAACAAAAGCCTCTCTGGTGAACCTCAGAGAAGTTAAAAAGGACCTTAGTCAGTTACAAGAAAAC
 TTAAGATTTTCGAAAACATGAATTTACAATTTGAAAACCAATGAATAAGACAATCAGAAAACCTTATCT
 ACGGTAATGGATGAAATCCACACTGTTCTCAAGAAGGATAATGTAAGAATGAAGACAAAGATCAAAAA
 TCCAAGGAGAATGGTGCCAGTGTA

ACGCGTACGCGGCCGCTCGAG - GFP Tag - GTTTAAAC

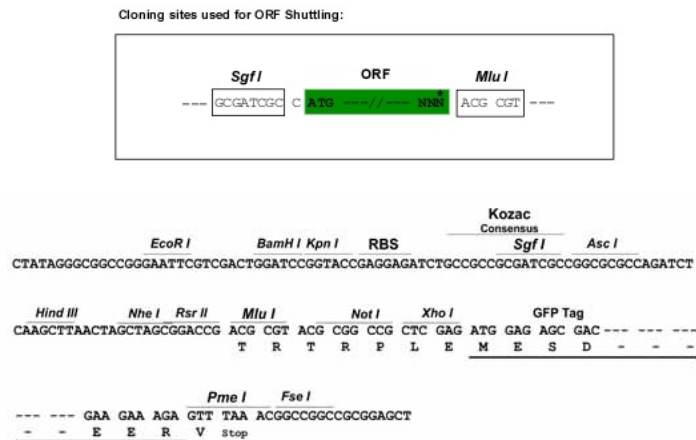
Protein Sequence:

>Peptide sequence encoded by RG239999
 Blue=ORF Red=Cloning site Green=Tag(s)

MAQFGGQKNPPWATQFTATAVSQPAALGVQPSLLGASPTIYTQQTALAAAGLTTQTPANYQLTQTAAL
 QQQAAAAAALQQLQPPQQLLLTQPAVALPTSLSLSTPQPTAQITVSYTPRSSQQQTQPQKQRFVFTGV
 VTKLHDTFGFVDEDFVFLSAVKGKTPQVGDRLVEATYNPMPFKWNAQRIQTLPNQNSQSQPQLLKT
 PPAVLQPIAPQTTFGVQTPQPQSLQAQISAASITPLLQTPQPLLQPPQKAGLLQPPVRIVSQPQP
 ARRLDPPSRFSGRNDRGDQVPNRKDDRSRERERRRRSRERSPQRKRSRERSPRRERERSPRRVRVVP
 RYTVQFSKFLDCPSCDMMELRRRYQNL YIPSDFFDAQF TWVDAFPLSRPFQLGNYCNFYVMHREVESL
 EKNMAILDPPDADHLYSKVMLMASPSMEDLYHKSCALAEQPQLRDFQHPARLVKFLVGMKGDDEAM
 AIGGHWSPLDGPDEKDPVSLIKTAIRCKKALTGIDL SVCTQWYRFAEIRYHRPEETHKGRTPAHVE
 TVVLFPPDVWHCLPTRSEWETLSRGYKQQLVEKLQGERKEADGEQDEEEKDDGEAKEISTPTHWSKLDP
 KTMKVNDLRKELESRALSSKGLKSQLIARLTKQLKVEEQKEEQKELEKSEKEEEDDDRKSSEDDKEEEE
 RKRQEEIERQRRERRYILPDEPAIIVHPNWAASKGKFDCSIMSLSVLLDYRLEDNKEHSFEVSLFAELF
 NEMLQRDFGVRIYKSLLSLPEKEDKKEKDKSKKDERKDKKEERDEDETPKPKRRKSGDDKDKKEDRD
 ERKKEDKRKDDSKDDDETEEDNNQDEYDPMEEAEAEDEEDDRDEEEMTKRDDKRDINRYCKERPSKDK
 KEKTQMITINRDLLMAFVYFDQSHCGYLLEKDLLEEILYTLGLHL SRAQVKLLLNKVVLRSCFYRKLTD
 TSKDEENHEESESLEQEDMLGNRLLLPPTVKQESKDVEENVGLIYVNGAMVDVGSLLQKLEKSEKVRAE
 VEQKLQLEEKTEDEKTIILNLENSKSLSGELREVKKDLSLQLENLKI SENMNLQFENQMNKTI RNL S
 TVMDEIHTVLKKNVKNEDKDKQSKENGASV
 TRTRPLEMESDESGLPAMEIECRITGTLNGVEFELVGGEGTPEQGRMTNKMSTKGALTFSPYLLSHV
 MGYGFYHFGTYPSGYENPFLHAINNGYNTRIEKYEDGGVLHVSFSYRYEAGRVIGDFKVMGTGFPED
 SVIFTDKIIRSNATVEHLHPMGDNDLDGSFTRTFSLRDGGYSSVVD SHMHFKSAIHPSILQNGGPMFA
 FRRVEEDHSNTELGIVEYQHAFKTPDADAGEERV

Restriction Sites: SgfI-MluI

Cloning Scheme:



ACCN: NM_001282959

ORF Size: 3405 bp

OTI Disclaimer: The molecular sequence of this clone aligns with the gene accession number as a point of reference only. However, individual transcript sequences of the same gene can differ through naturally occurring variations (e.g. polymorphisms), each with its own valid existence. This clone is substantially in agreement with the reference, but a complete review of all prevailing variants is recommended prior to use. [More info](#)

OTI Annotation: This clone was engineered to express the complete ORF with an expression tag. Expression varies depending on the nature of the gene.

Components: The ORF clone is ion-exchange column purified and shipped in a 2D barcoded Matrix tube containing 10ug of transfection-ready, dried plasmid DNA (reconstitute with 100 ul of water).

RefSeq: [NM_001282959.2](#)

RefSeq Size: 4730 bp

RefSeq ORF: 3408 bp

Locus ID: 55749

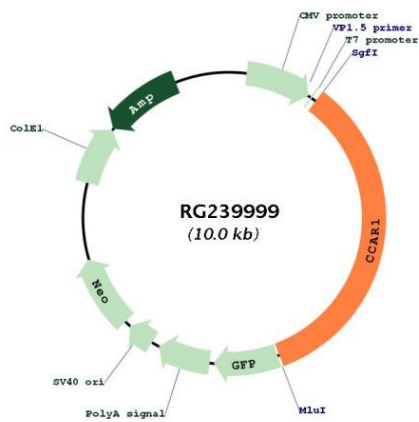
UniProt ID: [Q8IX12](#)

Cytogenetics: 10q21.3

MW: 131.5 kDa

Gene Summary:

Associates with components of the Mediator and p160 coactivator complexes that play a role as intermediaries transducing regulatory signals from upstream transcriptional activator proteins to basal transcription machinery at the core promoter. Recruited to endogenous nuclear receptor target genes in response to the appropriate hormone. Also functions as a p53 coactivator. May thus play an important role in transcriptional regulation (By similarity). May be involved in apoptosis signaling in the presence of the reinoid CD437. Apoptosis induction involves sequestration of 14-3-3 protein(s) and mediated altered expression of multiple cell cycle regulatory genes including MYC, CCNB1 and CDKN1A. Plays a role in cell cycle progression and/or cell proliferation (PubMed:12816952). In association with CALCOCO1 enhances GATA1- and MED1-mediated transcriptional activation from the gamma-globin promoter during erythroid differentiation of K562 erythroleukemia cells (PubMed:24245781). Can act as a both a coactivator and corepressor of AR-mediated transcription. Contributes to chromatin looping and AR transcription complex assembly by stabilizing AR-GATA2 association on chromatin and facilitating MED1 and RNA polymerase II recruitment to AR-binding sites. May play an important role in the growth and tumorigenesis of prostate cancer cells (PubMed:23887938).[UniProtKB/Swiss-Prot Function]

Product images:


Circular map for RG239999