

Product datasheet for **RG239995**

delta 2 Catenin (CTNND2) (NM_001288715) Human Tagged ORF Clone

Product data:

Product Type:	Expression Plasmids
Product Name:	delta 2 Catenin (CTNND2) (NM_001288715) Human Tagged ORF Clone
Tag:	TurboGFP
Symbol:	CTNND2
Synonyms:	GT24; NPRAP
Mammalian Cell Selection:	Neomycin
Vector:	pCMV6-AC-GFP (PS100010)
E. coli Selection:	Ampicillin (100 ug/mL)
ORF Nucleotide Sequence:	>RG239995 representing NM_001288715. Blue=ORF Red=Cloning site Green=Tag(s)

```
GCTCGTTTGTGAAACCGTCAGAATTTGTAAATACGACTACTATAGGGCGCCGGGAATTCGTCGACTG
GATCCGGTACCGAGGAGATCTGCCGCCGCGATCGCC
ATGAGCAGCATGAGTTCAGCAGAAGAGCAGTTTCAGTGGCAGTCACAAGATGGTCAAAAAGATATCGAA
GATGAGCTTACAACAGGTCTCGAGCTGGTGGACTCCTGTATTAGGTCACTACAGGAATCAGGAATACTT
GACCCACAGGATTATTCTACAGGTGAAAGGCCAGCCTGCTCTCCAGAGTGCACCTCAGCTCAATTCC
AAACCTGAAGGGTCTTTCCAGTATCCGGCCAGCTACCATAGCAACCAGACCCTGGCCCTGGGGGAAACC
ACCCCTTCACAGCTCCCGGCCGAGGCACACAAGCCGAGCTACGGGCCAGAGCTTCAGCCAGGGCAGC
ACCAGCCGCGCCGACCTGGCGGGGCCGAGCCGCGCCGCGCCGCGCCGCGCCGCGCGGGAGCCG
TTCGCGCCAGCCTGGGACGCGCTTCCACCTGCCCGACGCGCCGCGCCGCGCCGCGCCGCGCGCTC
TACTACTCCAGCTCCACGCTGCCCGCGCCGCGCGCGGGGCTCCCCGCTGGCCGCGCCACAGGGCGGT
TCGCCCACCAAGCTGCAGCGCGCGGCTCGGCCCCGAGGGCGCCACCTACGCCGCGCCGCGCGGCTCC
TCGCCAAGCAGTCGCCAGCCGCTGGCCAAGTCTACAGCACCAGCTCGCCATCAACATCGTCGTG
TCCTCGGCCGCGCTGTCCCGATCCGCGTGACCTCGCCCCCACCCTGCAGTCCACCATCTCCTCCTCG
CCCATCCACCAGCTGAGTCCACCATCGGCAGTACGCCACCCTGTGCCACCAAGCGCCTGGTCCAC
GGTCCGAGCAGTACAGCAAGCACTCGCAGGAGCTGTATGCCACGGCCACCCTCCAGAGGCCGGGCGAGC
CTGGCAGCTGGTCCCGAGCCTACACAGCAGCCAGCATGGGCACCTGGGCCAGAGTTGGGGCCCTG
CAGTCCCCAGAACCACATAGATCCCATCTATGAAGACCGCTCTATCAGAAGCCCCCTATGAGGAGT
CTCAGCCAGAGCCAGGGGACCCCTGCGCCGACGACACACCCGGCACCTACCGCAGGACAGACAGCCCA
TCTTCCCCTGGTGTGACTCCGTCCTTGCAGCGCACAGGCAGCCAGCACGGCCACAGAATGCCGCC
GCGGCCACCTTCCAGAGGGCCAGCTATGCCGCGGCCAGCCTCAAATTACGCGGACCCCTACCGACAG
CTGCAGTATTGTCCTCTGTTGAGTCTCCATACAGCAAATCCGGCCCTGCTCTCCCGCTGAAGGCACC
TTGGCCAGGTCCCGTCCATTGATAGCATTAGAAAGATCCAGAGAATTTGGATGGAGAGACCCGGAA
CTGCCGGAAGTATTGATGTTGCAGCACCAGTTTCCCTCGGTCCAGTCTAACGCGGCAGCCTACTTG
CAACACCTCTGTTTGGAGACAACAAAATTAAGCCGAGATAAGGAGACAAGGAGGCATCCAGCTCCTG
```



[View online >](#)

GTGGACCTGTTGGATCATCGGATGACCGAAGTCCACCGTAGTGCCTGTGGAGCTCTGAGAAACCTGGTG
TATGGGAAGGCCAACGATGATAACAAAATTGCCCTGAAAACTGTGGTGGCATCCCAGCACTGGTGGG
TACTCCGCAAGACGACTGACCTGGAGATCCGGGAGCTGGTCACAGGAGTCCCTTGGAACCTCTCCTCA
TGCGATGCACTCAAAATGCCAATCATCCAGGATGCCCTAGCAGTACTGACCAACGCGGTGATTATCCCC
CACTCAGGCTGGGAAAATTCGCCTCTTCAGGATGATCGGAAAATACAGCTGCATTATCACAGGTGCTG
CGTAACGCCACCGGTGCCTAAGGAATGTTAGTTCGGCCGGAGAGGAGGCCCGCAGAAGGATGAGAGAG
TGTGATGGGCTTACGGATGCCTTGTGTACGTGATCCAGTCTGCGCTGGGAGCAGTGAGATCGATAGC
AAGACCGTTGAAAACTGTGTGTGCAATTTAAGGAACCTCTCGTACCGGCTGGCGGCAGAAACGTCTCAG
GGACAGCACATGGGCACGGACGAGCTGGACGGGCTACTCTGTGGCGAGGCCAATGGCAAGGATGCTGAG
AGCTCTGGGTGCTGGGGCAAGAAGAAGAAGAAAAAGAAATCCCAAGATCAGTGGGATGGAGTAGGACCT
CTTCCAGACTGTGCTGAACCACAAAAGGGATCCAGATGCTGTGGCACCCATCAATAGTCAAACCTAC
CTCACACTGCTCTGAGTGCTCAAATCCAGACACGCTGGAAGGGGCGCAGGCGCCCTGCAGAATTG
GCTGCAGGAGCTGGAAGTGGTCAGTATATATCCGAGCCGCTGTCCGAAAAGAGAAAGCCCTGCCATC
CTCGTGGAGCTGCTCCGAATAGACAATGACCGTGTGGTGTGCGCGGTGGCCACTGCGCTGCGGAACATG
GCCTTGGACGTCAGAAATAAGGAGCTCATCGGCAATACGCCATGCGAGACCTAGTCCACAGGCTTCCA
GGAGGGAACAACAGCAACAACACTGCAAGCAAGGCCATGTCCGATGACACAGTGACAGCTGTCTGTGC
ACACTGCACGAAGTGATTACCAAGAACATGGAGAACGCCAAGGCCCTACGGGATGCCGTTGGCATCGAG
AAGTTGGTCGGCATCTCCAAAAGCAAAGGAGATAAACACTCTCCAAAAGTGGTCAAGGCTGCATCTCAG
GTCCTCAACAGCATGTGGCAGTACCGAGATCTGAGGAGTCTTACAAAAAGGATGGATGGTCACAATAC
CACTTTGTAGCCTCGTCTTCAACCATCGAGAGGGACCGGCAAAGGCCCTACTCTCTCCCGCACGCCC
TCCATCTCCCCTGTGCGCGTGTCTCCCAACAACCGCTCAGCAAGTGGCCAGCTTACCTCGGAAATG
ATCAGCCTCAAAGAAAGGAAAACAGACTACGAGTGCACCGGCAGCAACGCCACCTACCACGGAGCTAAA
GGCGAACACACTTCCAGGAAAGATGCCATGACAGCTCAAAACACTGGAATTTCACTTTGTATAGGAAT
TCTTATGGTGCGCCCGCTGAAGACATCAAACACAACCAGGTTTCAGCACAGCCAGTCCCACAGGAGCCC
AGCAGAAAAGATTACGAGACCTACCAGCCATTTTCAAGATTCCACAAGAAATTACGATGAGTCTTCTTC
GAGGACCAGGTCCACCATCGCCCTCCCGCCAGCGAGTACACCATGCACCTGGGTCTCAAGTCCACCGGC
AACTACGTTGACTTCTACTCAGCTGCCCGTCCCTACAGTGAAGTGAAGTGAACGAGCCACTACCCG
GCCTCCCCGACTCCTGGGTG

AGCGGACCGACGCGTACGCGGCCGCTCGAG - GFP Tag - GTTTAAAC

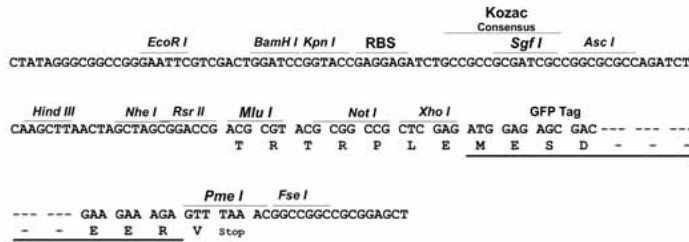
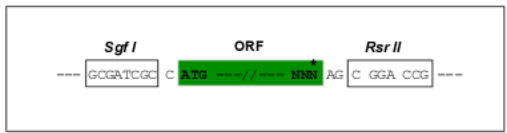
Protein Sequence: >Peptide sequence encoded by RG239995
 Blue=ORF Red=Cloning site Green=Tag(s)

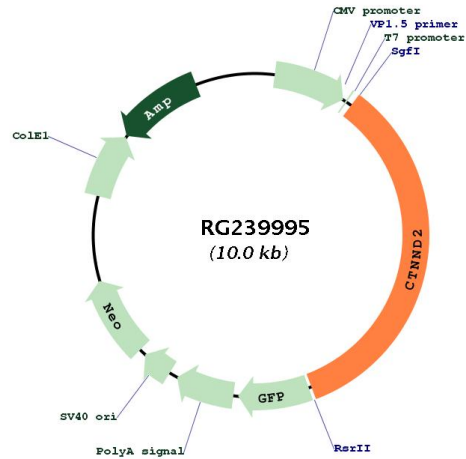
MSSMSSAEEQFQWQSQDGGQKIDIEDELTGLELVDSCIRSLQESGILDPQDYSTGERPSLLSQSALQLNS
 KPEGSFYQYASYHSNQTALALGETTPSQLPARGTQARATGQSFSGTTSRAGHLAGEPAPPPPPPPREP
 FAPSLGSAFHLDPAPAAAAAALYYSSSTLPAPPRGGSPLAAPQGGSPTKLQRGGSAPEGATYAAPRGS
 SPKQSPSRLAKSYSTSSPINIVVSSAGLSPIRVTSPTVQSTISSSPIHQLSSTIGTYATLSPTKRLVH
 ASEQYSKHSQELYATATLQRPGLAAGSRASYSSQHGHLGPELRLALQSPEHHIDPIYEDRVYQKPPMRS
 LSQSQGDPLPPAHTGTYRTSTAPSSPGVDSVPLQRTGSQHGPQNAAAATFQRASYAAGPASNYADPYRQ
 LQYCPSVESPYSKSGPALPPEGLARSPSIDSIQKDPREFGWRDPELPEVIQMLQHQPFSVQSNAAAYL
 QHL CFGDNKIKAEIRRQGGIQLLVDLLDHRMTEVHRSACGALRNLVYGKANDDNKIALKNCGGIPALVR
 LLRKTDTLEIRELVTGLWNLSSCDALKMPIIQDALAVL TNAVIIPHSGWENSPLQDDRKIQLHSSQVL
 RNATGCLRNVSAGEEARRRMRECDGLTDALLYVIQSALGSEIDSKTVENCVCILRNL SYRLAETSQ
 GOHMGTDGLDGLLCEANGKDAESSGCWGKKKKKSSQDQWDGVLDPDCAEPPKGIQMLWHPKVIKPY
 LLLLSECSNPDTLEGAAGALQNL AAGSWKWSVYIRAAVRKEKGLPILVELLRIDNDRVVCVATALRNM
 ALDVRNKELGKYAMRDLVHRLPGGNNSNTASKAMSDDTVTAVCCTLHEVITKNMENAKALRDAGGIE
 KLVGISKSGDKHSPKVVKAASQVLNSMWQYRDLRSLYKKGWSQYHFVASSSTIERDRQRPYSSSRTP
 SISPVRYSPNNRSASAPSPREMI SLKERKTDYECTGSNATYHGAKGEHTSRKDMATAQNTGISTLYRN
 SYGAPAEDIKHNQVSAQVPVQEPSRKDYETYQPFQNSTRYNDESF FEDQVHHRPPASEYTMHLGLKSTG
 NYVDFYSAARPYSELNYETSHYPASPDSWV
 SGPTRTRPLEMESDESGLPAMEIECRITGTLNGVEFELVGGGEGTPEQGRMTNKMKSTKGALTFSPYLL
 SHVMGYGFYHFGTYPSGYENPFLHAINNGGYTNTRIEKYEDGGVLHVSFSYRYEAGRVIGDFKVMGTGF
 PEDSVIFTDKIIRSNATVEHLHPMGDNDLDGSFTRTFSLRDGGYSSVVD SHMHFKA IHP SILQNGGP
 MFAFRRVEEDHSNTELGIVEYQHAFKTPDADAGEERV

Restriction Sites: SgfI-RsrII

Cloning Scheme:

Cloning sites used for ORF Shuttling:



Plasmid Map:


ACCN:	NM_001288715
ORF Size:	3402 bp
OTI Disclaimer:	The molecular sequence of this clone aligns with the gene accession number as a point of reference only. However, individual transcript sequences of the same gene can differ through naturally occurring variations (e.g. polymorphisms), each with its own valid existence. This clone is substantially in agreement with the reference, but a complete review of all prevailing variants is recommended prior to use. More info
OTI Annotation:	This clone was engineered to express the complete ORF with an expression tag. Expression varies depending on the nature of the gene.
Components:	The ORF clone is ion-exchange column purified and shipped in a 2D barcoded Matrix tube containing 10ug of transfection-ready, dried plasmid DNA (reconstitute with 100 ul of water).
RefSeq:	NM_001288715.1 , NP_001275644.1
RefSeq Size:	5289 bp
RefSeq ORF:	3405 bp
Locus ID:	1501
UniProt ID:	Q9UQB3
Cytogenetics:	5p15.2
Protein Families:	Druggable Genome
MW:	123.5 kDa

Gene Summary:

This gene encodes an adhesive junction associated protein of the armadillo/beta-catenin superfamily and is implicated in brain and eye development and cancer formation. The protein encoded by this gene promotes the disruption of E-cadherin based adherens junction to favor cell spreading upon stimulation by hepatocyte growth factor. This gene is overexpressed in prostate adenocarcinomas and is associated with decreased expression of tumor suppressor E-cadherin in this tissue. This gene resides in a region of the short arm of chromosome 5 that is deleted in Cri du Chat syndrome. Alternative splicing results in multiple transcript variants encoding different isoforms. [provided by RefSeq, Dec 2013]