

Product datasheet for **RG239993**

SIN3B (NM_001297595) Human Tagged ORF Clone

Product data:

Product Type:	Expression Plasmids
Product Name:	SIN3B (NM_001297595) Human Tagged ORF Clone
Tag:	TurboGFP
Symbol:	SIN3B
Mammalian Cell Selection:	Neomycin
Vector:	pCMV6-AC-GFP (PS100010)
E. coli Selection:	Ampicillin (100 ug/mL)
ORF Nucleotide Sequence:	>RG239993 representing NM_001297595. Blue=ORF Red=Cloning site Green=Tag(s)

```
GCTCGTTTAGTGAACCGTCAGAATTTTGTAAACGACTCACTATAGGGCGGCCGGGAATTCGTCGACTG
GATCCGGTACCGAGGAGATCTGCCGCCGCGATCGCC
ATGGCGCACGCTGGCGGTGGCAGCGGTGGCAGCGGTGCCGGCGGCCCGGGGCCGGGGCTGAGCGGC
GCCCGCTGGGGTCTCGGGCTCCGCAGGCCACGAGAAGCTGCCGGTGCACGTAGAAGACGCCCTCAC
TATCTGGACCAGGTGAAGATCCGCTTTGGCAGCGACCCCTGCCACCTACAACGGCTTCTGGAGATCATG
AAGGAGTCAAAGCCAGAGCATCGATACTCCTGGAGTCATCAGACGTGTCTCGCAGCTCTCCACGAG
CACCTGACCTCATTGTTGGATTCAACGCTTTTCTCCCTCGGATATAGAATAGACATCCCAAGAAT
GGCAAGTTAAACATACAGTCGCCTCTGACAAGCCAGGAGAATCGCACAAACCAGGGACGGTGCAGAG
GACTTCAAGCAGCAGGTGCCGTATAAAGAGGACAAACCCAGGTGCCCTGGAGTCCGATTCCGTGGAA
TTCAACAACGCCATCAGCTATGTGAATAAGATTAACCCGCTTCTAGACCACCCAGAAATCTACAGG
TCATTCTGGAGATCCTGCACACGTACCAGAAGGAGCAGCTGAACACGAGGGGCCGGCCATTCCGAGGC
ATGTCTGAAGAGGAGGTGTTACCCGAGGTGGCCAACTCTCCGGGGCCAGGAGGACCTGCTCTCAGAG
TTTGGACAGTTCTGCCGAAGCAAGCGGTCTCTGTTACAGGAAACGGGCCGTGCGAGATGCACAGC
GTGCAGAAGAACGAGCACGACAAGACCCCGGAGCACAGCAGGAAGCGCTCCCGGCCCTCGCTCTCCGC
CCCGTGTCTGCACCCGCAAGAAAAAATGAACTTCTGTTACCAAAGACCTGTCCATCGCTGCAGTG
GGGAAGTACGGGACTCTGCAGGAATTTCTTTTGTGACAAGTCCGCCGGGTGCTGAAGAGCCAGGAG
GTGTATGAAAACCTTCTCCGCTGCATCGCACTTCAACCAGGAGCTGGTGTCTGGCTCTGAGCTCCTG
CAGCTCGTCAGCCATTTCTGGGAAATTTCCAGAACTTTTGCACAGTTCAAGTCTTCTGGGGTA
AAAGAGCTGTCCTTCGCGCCACCCATGAGCGACAGATCCGGGGACGGGATAAGCCGGGAAATTGATTAT
GCATCCTGCAAGCGCATAGGATCCAGCTACCGGGCACTCCCCAAAACCTACCAGCAGCCCAAGTGCAGT
GGGAGGACAGCCATCTGCAAGGAGTACTGAACGACACCTGGGTCTCCTTCCCTTCTGGTCTGAGGAC
TCCACGTTCTGTCAGTCCAAGAAGACACCGTACGAGGAGCAGCTTACCCTGTGAGGACGAGCGCTTC
GAGTTAGACGTTGCTCTGGAGACGAACCTGGCCACAATCCGTGTGTTGAAAAGTGTGCAGAAGAAGCTG
TCTCGGATGGCGCCGGAAGACCAGGAGAAGTCCGGCTGGACACTCCCTGGGAGGCACGTCGGAGGTG
ATCCAGCCCGTCCATTTATCGCATCTATGGCGACAAGGCCCGGAGATCATCGAGAGCTCAAGAAG
AACCTGTACCCTGTCCCGTTGCTCTGAAAAGACTGAAGGCCAAGGAAGAGGAGTGGCGGGAGGCC
```



[View online >](#)

CAGCAGGGCTTCAACAAGATCTGGCGGGAGCAGTATGAGAAGGCGTACCTCAAGTCCCTTGACCACCAG
 GCTGTGAAGTCAAGCAGAACGACACCAAGGCCCTGCGCTCCAAGAGCTTGTCAACGAGATCGAGAGC
 GTCTACGACGAGCACCAGGAGCAGCACTCGGAGGGCCGAGTGCCTCTAGCGAGCCGACCTCATC
 TTTGTGTACGAGGACCGGAGATCTCGGAGGACGAGCAGCGCTCATCAGCTACTACGTGAAGCGGCAG
 CCGGCCATCCAGAAGGAGGACCAGGGCACCATCCACCAGCTGCTGCACCAGTTCGTGCCAGCCTCTTC
 TTCTCTCAGCAGCTGGACCTGGCGCCTCCGAGGAGTCACTGATGAGGACCGGGACAGCCCCAGGGG
 CAGACCACAGACCCAGTGAAGCAGAAGAAGCCGGCCAGGACCCACAGTAGCCCCACAGGAGGAAG
 GGGGCTTCGGGGATGCCCGGCCACTGAGCAGCCACCCCTGCCGCCAGCCCGCACAAAGCCCTG
 GACGATGTCTACAGCCTATTTTTGCAACAACAAGTGGTACTTCTTCTGCGCCTGCACCAGACCTG
 TGCTCCAGGCTGTGAAGATCTACCGCCAGGCGCAGAAGCAGCTTCTGGAGTATCGGACCGAGAAGGAG
 CGGGAGAAGTGTGTGAGGGCCGAGGAGAAGGGCAGCAGCCCGCCATGGAGCTGCGGCTGAAG
 CAGCCCAGTGAAGTGGAGCTGGAGGAGTACTACCGGCCCTTCTGGACATGGTGGGAGCCTGCTGGAG
 GGCAGCATCGACCCACGAGTACGAGGACACCCTACGCGAGATGTTACCATCCATGCCTACGTGGGC
 TTCACCATGGACAAGCTGGTGCAGAACATTGCGCGCAGCTGCACCACCTCGTGAGCGATGACGTCTGC
 CTGAAGGTGGTGGAGCTACTCTGAACGAGAAGAAGCGGGTGCCTGGTGGGAACCTGTCTCCCGC
 TGGCTCCGCGCTGCTAGGAGACCAAGTACCAGTGAAGGCTGAGCGCTGCATGGCCGACGAGAAGTGC
 TTCAAGGTGATGTTCTGCAGCGCAAAGGGCAGGTGATCATGACCATCGAGCTCCTGGACACCGAGGAG
 GCCCAGACGGAGGACCCTGTGGAGTCCAGCACCTGGCTCGGTACGTGGAGCAGTATGTGGGACCGAG
 GGCGCGTCCAGCTCGCCACTGAGGGCTTCTCTGAAACCTGTGTTCTGCAGAGGAACCTCAAGAAG
 TTCCGCGCCGGTGGCAGAGCGAGCAGGCGCGGCCCTGCGCGGTGAGGCCAGGAGCTCCTGGAAGCGG
 CTGGTGGCGTGGAGAGCGCCTGCGACGTGGACTGCCGCTCAAGCTCAGCACTACAAGATGGTGTTC
 ATCGTGAAGTCCGAGGACTACATGTACCGTCCGCGGACCCCTGCCGGCCAAAGCAGGTGCAGCCCTG
 GTCTGCTCCGCCACCACAGCACTTTGAGGAGTGGCAGCAGCGCTGGCTGGAGGACAATGTGACCGTG
 GAGGCGGCTAGCCTGGTGCAGGACTGGCTGATGGGTGAGGAGGACGAGGACATGGTACCCTGCAAGACG
 CTGTGTGAGACAGTGCACGTGCACGCGCCTGCCGTGACCCGCTACCGCGTGCAGTACAGCCGCCCGCC
 GCCTCGCC

ACGCGTACGCGGCCGCTCGAG - GFP Tag - GTTAAAC

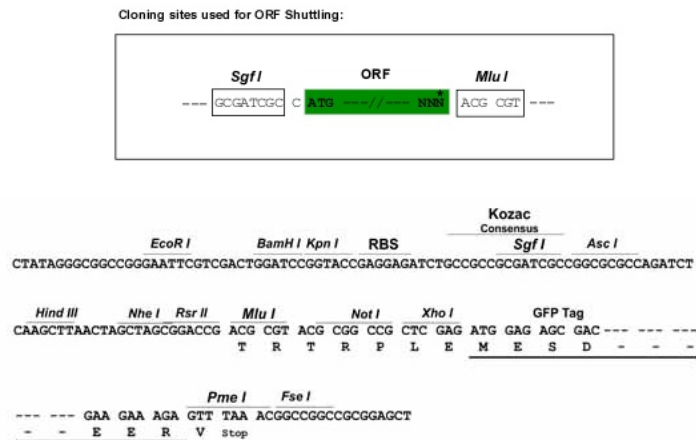
Protein Sequence:

>Peptide sequence encoded by RG239993
 Blue=ORF Red=Cloning site Green=Tag(s)

MAHAGGSGSGAGGPAGRGLSGARWGRSGSAGHEKLPVHVEDALTYLDQVKIRFGSDPATYNGFLEIM
 KEFKSQSIDTPGVIIRVSQLFHEHPDLIVGFNAFLPLGYRIDIPKNGKLNISPLTSQENSHNHGDGAE
 DFKQQVPYKEDKQVPLESDSVEFNNAISYVNIKTRFLDHPFIYRSFLEILHTYQKEQLNTRGRPFRRG
 MSEEEVFTEVANLFRGQEDLLSEFGQFLPEAKRSLFTGNGPCMHVSQKNEHDKTPEHSRKRSPSLLR
 PVSAPAKKMKMLRGTDLIAAVGKYGTLQEF SFFDKVRRVLKSQEVYENFLRCIALFNQELVSGSELL
 QLVSPFLGKFPFLFAQFKSFLGVKELSFAPPMSDRSGDGI SREIDYASCKRIGSSYRALPKTYQQPKCS
 GRTAICKEVLNDTWVSPFWSWEDSTFVSSKTPYEEQLHRCEDERFELDVVLETNLATIRVLESVQKLL
 SRMAPEDQEKFRLLDSDLGGTSEVIQRRAIYRIYGDKAPEIIESLKNPVTAVPVVLKRLKAKEEWEWREA
 QQGFNKIWRQYKAYLKSLDHQAVNFKQNDTKALRSKLLNEIESVYDEHQEQHSEGRSAPSSEPHLI
 FVYEDRQILEDAALISYVYKRPQAIQKEDQGTIHQLLHQFVPSLFFSQQLDLGASEEADSDRSPQG
 QTDPSEKPKPAPGPHSSPPEEKGAFGDAPATEQPPLPPPAPHKPLDDVYSLFFANNWYFFLRHLHQL
 CSRLKIYRQAQQLLEYRTEKEREKLLCEGRREKGSDPAMELRLKQPSEVELEEYPAFLDMVRSLL
 GSIDPTQYEDTLREMFTIHAYVGF TMDKLVQNIARQLHHLVSDVCLKVVELYLNEKRGGAAGNLSSR
 CVRAARETSYQWKAERCMADENCFKVMFLQRKGQVIMTIELLDTEEAQTEDPVEVQHLARYVEQYVGT
 GASSPTEGFLLPVFLQRNLKFFRRRWQSEQARALRGEARSSWKRLVGVESACDVDCRFKLSHKMVF
 IVNSEDYMYRRGTL CRAKQVQPLVLLRHHQHFEWHSRWLEDNVTVEAASLVQDWMGEEDEDMVPCKT
 LCETVHVHGLPVTRYRVQYSRRPASP
 TRTRPLEMESDESGLPAMEIECRITGTLNGVEFELVGGEGTPEQGRMTNKMSTKGALTFSPYLLSHV
 MGYGFYHFGTYPSGYENPFLHAINNGYNTRIEKYEDGGVLHVSFSYRYEAGRVIGDFKVMGTGFPED
 SVIFTDKIIRSNAIVEHLHPMGDNDLGSFTRTFSLRDGGYSSVVDSHMHFKSAIHPSILQNGGPMFA
 FRRVEEDHSNTELGIVEYQHAFKTPDADAGEERV

Restriction Sites: SgfI-MluI

Cloning Scheme:



ACCN: NM_001297595

ORF Size: 3390 bp

OTI Disclaimer: The molecular sequence of this clone aligns with the gene accession number as a point of reference only. However, individual transcript sequences of the same gene can differ through naturally occurring variations (e.g. polymorphisms), each with its own valid existence. This clone is substantially in agreement with the reference, but a complete review of all prevailing variants is recommended prior to use. [More info](#)

OTI Annotation: This clone was engineered to express the complete ORF with an expression tag. Expression varies depending on the nature of the gene.

Components: The ORF clone is ion-exchange column purified and shipped in a 2D barcoded Matrix tube containing 10ug of transfection-ready, dried plasmid DNA (reconstitute with 100 ul of water).

RefSeq: [NM_001297595.2](#)

RefSeq Size: 5053 bp

RefSeq ORF: 3393 bp

Locus ID: 23309

UniProt ID: [O75182](#)

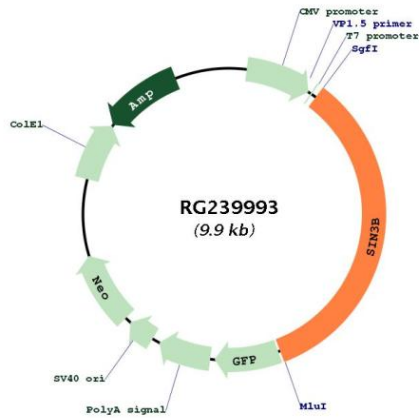
Cytogenetics: 19p13.11

MW: 129.8 kDa

Gene Summary:

Acts as a transcriptional repressor. Interacts with MXI1 to repress MYC responsive genes and antagonize MYC oncogenic activities. Interacts with MAD-MAX heterodimers by binding to MAD. The heterodimer then represses transcription by tethering SIN3B to DNA. Also forms a complex with FOXK1 which represses transcription. With FOXK1, regulates cell cycle progression probably by repressing cell cycle inhibitor genes expression.[UniProtKB/Swiss-Prot Function]

Product images:



Circular map for RG239993