

Product datasheet for **RG239981**

FAM120A (NM_001286722) Human Tagged ORF Clone

Product data:

Product Type:	Expression Plasmids
Product Name:	FAM120A (NM_001286722) Human Tagged ORF Clone
Tag:	TurboGFP
Symbol:	FAM120A
Synonyms:	C9orf10; HBVPTPAP; OSSA
Mammalian Cell Selection:	Neomycin
Vector:	pCMV6-AC-GFP (PS100010)
E. coli Selection:	Ampicillin (100 ug/mL)
ORF Nucleotide Sequence:	>RG239981 representing NM_001286722. Blue=ORF Red=Cloning site Green=Tag(s)

```
GCTCGTTTAGTGAACCGTCAGAATTTGTAAACGACTCACTATAGGGCGCCGGGAATTCGTCGACTG
GATCCGGTACCGAGGAGATCTGCCGCCGCGATCGCC
ATGGCGTGCAGGGCTTCCAGGACTACATCGAGAAGCACTGCCCGAGCGCCGTGGTCCGGTGGAGCTG
CAGAAGCTGGCCCGGGCAGCCTGGTGGCGGGCGGGCAGCGGCCCGCAGACCCCGCTGCGCCTG
CTGGTGGACGCCGACAACCTGCCTGCACCGCCTCTACGGCGGCTTCTACACCGACTGGGTACGCGGGC
CAGTGGAAACCACATGCTTGGCTACCTGGCGGGCTGGCCAAGGCCTGCTCGGGCCAACATCGAGCTC
TTCGTCTTCTTCAACGGCGCGCTCGAGAAGGCCGGCTGCACGAGTGGTCAAGCGGCAGGGCAACGAG
CGCCAGACGGCACAGCAGATCGTCAGCCATGTCCAGAACAAGGGCACCCCGCCCAAAGTCTGGTTC
CTGCCGCCGTCTGCATGGCCACTGCATCCGCCCTGGCGCTCATCCGCTTCCACGTCAAGTTGCACAG
AGCATTGAGGATCACCATCAGGAAGTATTGGTTTCTGCAGAGAGAATGGTTTCCATGGCTTGGTTGCG
TATGACTCTGATTATGCACTGTGCAACATCCCCTACTATTTTCAAGTGCCTTAACTGAGCCGG
AACGGGAAAAGTCTCACCACAAGCCAATATCTGATGCAAGAAGTTGCCAAGCAACTGGACCTGAATCCA
AATCGTTTTCTATTTTGTGCTCTCTTAGGAAATCACATTCTGCCTGATGAAGATCTGGCTTCTTT
CACTGGAGTTTACTTGGTCCAGAATCCACTAGCCTCACTAAAGTCCGGGCCACCAGCTGGTCTTG
CCACCTTGGCAGCTAGTGATCAAAGCCGTTGCTGACTATGTACGCAACATTCAAGACACCTCTGACTG
GATGCCATAGCTAAAGATGTTTTCCAGCATTACAGTCTAGAACAGATGACAAAGTTATTCGATTTAAG
AGAGCAATTGGATATTATTCAGCGACTAGTAAGCCTATGTCAATTCATCCACCACATTACTTAGCCAGA
CCCGGTCCGTTTGAATGCCTGGGATGGTGGCGCCGATGTTTCTCCTCAGATGTCAACATTCCGCAG
ACCTCTCTGCAAGCAAAGCCCGTGGCCCCACAGGTGCCAGCCAGGGGGCGCCCGGGCCAGGGTCCA
TACCCGTACAGCCTCTCTGAGCCAGCACCTCTCACTTTGGACACGAGCGGGAAGAATCTGACGGAGCAG
AACAGCTACAGCAACATTCTCACGAAGGAAGCACACGCCGCTGTATGAGCGGTCTCGCCATCAAC
CCGGCCAGAGCGGCAGCCCAACCACGTGGATTCCGCTACTTCCCTGGCTCTTCTACATCGTCATCT
TCCGACAACGACGAGGGCAGCGGAGGGGACAAACCATATCAGCGGGAACAAGATTGGCTGGGAGAAG
ACGGGAAGCCACTCAGAGCCTCAGGCACGAGGAGACCCAGGAGACCAAACAAGGCAGAAGGCTCGTCC
```



View online »

ACTGCCTCTTCAGGAAGCCAACCTAGCCGAAGGCAAGGGAAGCCAGATGGGCACTGTCCAGCCAATCCCC
 TGCTCTGTGCGATGCCACCAGGAACCATGGACATCACCACACCTCCCCTGCCCCCGTCGCACCT
 GAGGTGCTGAGAGTGGCCGAGCAGGCCACAAGAAGGGGCTGATGATCCCTACATCTTCCATGTCTG
 ACGAAGGGTGAATCAAATTTGCTGTTTCTATTGAAGATGAAGCCAACAAGGACCTGCCTCCGGCCGCT
 CTGCTCTATAGGCCAGTTCGTAGTATGTTACGGAGTCTGTTAGTTTGGCAGAAAGCAGAAAGAAA
 ACTGAGAGACTTGCTTTTAGAAAGAACAGACTCCACCAGAATTTTACCAGTGATCATTAAAGAATGG
 GCAGCTTACAAAGGAAAGTCTCCTCAAACCCCGAACTGGTTGAAGCTCTTGCCTTCAGGAGTGGACC
 TGCCCCAACCTGAAGAGGCTGTGGTTGGGTAAGGCGGTAGAGGACAAGAACCAGGATGAGGGCCTTC
 CTGGCCTGCATGAGGTCCGACACCCAGCCATGCTCAACCCTGCCAACGTGCCACTCACCTCATGGTG
 CTCTGCTGCGTCTTACGGTACATGGTGCAGTGGCCGGGAGCAGCATCCTTCGGCGTCAGGAGTAGAT
 GCCTTCTGGCTCAGGCGCTGTCCCCAACTCTACGAGCCTGATCAGCTCCAGGAGCTCAAGATTGAG
 AACCTAGATCCCCGAGGAATTCAGCTATCAGCTCTTTCATGAGTGGAGTAGACATGGCCTTGTGTTGCA
 AATGATGCATGCGGACAGCCAATCCCCTGGGAACACTGTTGCTTGGATGTATTTGATGGGAAGCTC
 TTCCAATCCAACTCCTCAAAGCCAGCCGGGAAAAGACCCCACTATTGACCTCTGTGATGGTCAAGCT
 GATCAGGCTGCCAAGGTAGAGAAGATGCCAGAGCGTCTCGAGGGGCTCAGCTTCTCCAGGCAGAGC
 CACACGCTCCCTTCCCAGCCGACCTGCCTGCCTTCTACCCTGCCTCTGCGTACCCCGGCACCTTT
 GGGCCTGTCCACCTCTCAGGGCAGGGGACAGAGGCTTTCAGGCGTCTGTGGCTTTGGAGGCCCTAT
 GGGGAAACGGTAGCAACAGGCCCTTACCCTGCCTTCCGTGTGGCGGACAGCATCGGACACTGCGGAGCC
 TTCTCAGGCAGTACAGCAGCAGGACTAGCAAGTCCCAGGGCGGAGTCCAACCTATACCTTCTCAGGGA
 GGCAAAC TAGAAATAGCTGGCACTGTGGTTGGCCATTGGGCTGGGAGCAGGCGGGGCCGTGGGGCCCG
 GGGCCTTCCCCTGCAGGTGGTTCTGTCCGAGGACCAGCTAGAGGGCGTCCAAGAGGAGTTATTTCC
 ACCCCAGTGATTAGAACATTTGGAAGAGGTGGAAGTACTATGGCAGAGGTTACAAAAACAGGCAGCA
 ATTCAAGGCAGACTCCTTATGCTGCTTACAGAGAAGAAGTGGCCAAAGAAGTAAAGTCAAAATCTGGG
 GAATCGAAGTCCCTGCTATGTCTTACAGCGGGTCCCTGGCTGAAAACGAGTGTGGCCGAGGAGAG
 CCGGCTCCCAGATGAACGGGAGCAGGGTACGCCAGGGCCCCAGCCACTCTGAAAGTGCCTTGAAT
 AATGACTCTAAAACGTGCAATACAAATCCTCATTTAAATGCACTAAGTACAGACAGCGCTTGCCGCAGA
 GAAGCTGCTCTGGAGGCAGCTGTCTTAAATAAAGAAGAG

ACGCGTACGCGGCCGCTCGAG - GFP Tag - GTTTAAAC

Protein Sequence:

>Peptide sequence encoded by RG239981
 Blue=ORF Red=Cloning site Green=Tag(s)

MGVQGFQDYIEKHCPASVVPVELQKLARGSLVGGGRQRPPTPLRLLVDADNCLHRLYGGFYTDWVSSG
 QWNHMLGYLAALAKACFGGNIELFVFFNGALEKARLHEWVKRQGNERTAQQIVSHVQNKGTPPPQVWF
 LPPVCMACHIRLALIRFHVKVAQSIEDHHQEVIGFRENGFHGLVAYDSDYALCNIPYYFSAHALKLSR
 NGKSLTTSQYLMHEVAKQLDLNPNRFPFAALLGNHILPDEDLASFHWSLLGPEHPLASLKVRAHQLVL
 PPCDVVIKAVADYVRNIQDTSDLDAIAKDVVFQHSQSRDDKVIKRAIGYYSATSKPMSFHPHYLAR
 PGPFGMPPMPPHVPQMLNIPQTSLQAKPVAPQVSPGGAPGQGPYPYSLSEPAPLTLDTSGKNLTEQ
 NSYSNIPHEGKHTPLYERSSPINPAQSGSPNHVDSAYFPGSSTSSSDNDEGSGGATNHISGNKIGWEK
 TGSHPQARGDPGDQTKAEGSSTASSGSQLAEGKGSQMGTVPQIPCLLSMPTRNHMDITPPLPPVAP
 EVLRVAEHRHKKGLMYPYIFHVLTKGEIKIAVSIIEDEANKDLPPAALLYRVRQYVYGVLFSLAESRKK
 TERLAFRKNRLLPEFSPVIKEWAAYKPKSPQTPPELVEALAFREWTCPNLKRLWLKAVEDKNRRMRAF
 LACMRSDTPAMLNANVPHTLMVLCVLRVMVQWPGARILRRQELDAFLAQLSPKL YEPDQLQELKIE
 NLDPRGIQLSALFMSGVDMALFANDACGQIPWEHCPCWYFDGKLFQSKLLKASREKTPIDLCDGQA
 DQAAKVEKMRQSVLEGLSFRQSHLPPFPFPPALPFYPASAYPRHFGPVPPSQGRGRGFAVCGFGGYPY
 GETVATGPYAFRVAASGHGCAFSGSDSRTSKSQGGVQIPISQGGKLEIAGTVVGHWAGSRRRGRGR
 GPFPLQVYVSVGGPARGRPRGVIISTPVIRTFGRGGRYGRYKNAAIQGRPPYAAAEVAKELKSKSG
 ESKSSAMSSDGLAENGVMAEEKPAPQMNGSTGDARAPSHSEALNNDKTCNTNPHLNALSTDSACRR
 EAALAAVLNKEE

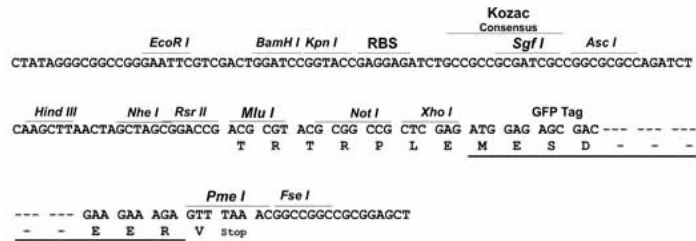
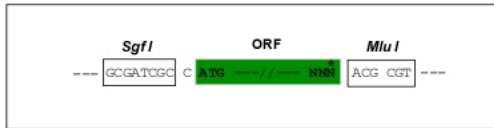
TRTRPLEMESDESGLPAMEIECRITGTLNGVEFELVGGGEGTPEQGRMTNKMSTKGALTFSPYLLSHV
 MGYGFYHFGTYPSGYENPFLHAINNGGYNTRIEKYEDGGVLHVSFSYRYEAGRVIGDFKVMGTGFPED
 SVIFTDKIIRSNATVEHLHPMGDNDLDGFSRTRFSLRDGGYSSVVDSHMHFKSAIHPSILQNGGPMFA
 FRRVEEDHSNTELGIVEYQHAFKTPDADAGEERV

Restriction Sites:

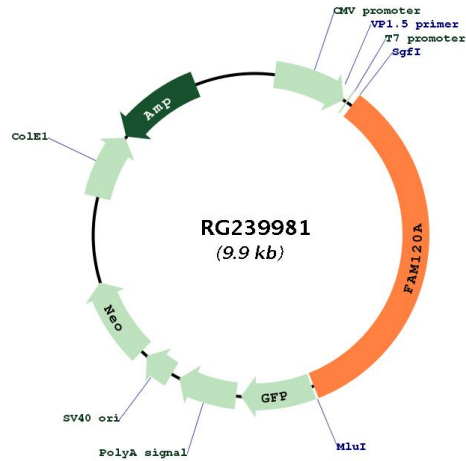
SgfI-MluI

Cloning Scheme:

Cloning sites used for ORF Shuttling:



Plasmid Map:



ACCN: NM_001286722

ORF Size: 3351 bp

OTI Disclaimer: The molecular sequence of this clone aligns with the gene accession number as a point of reference only. However, individual transcript sequences of the same gene can differ through naturally occurring variations (e.g. polymorphisms), each with its own valid existence. This clone is substantially in agreement with the reference, but a complete review of all prevailing variants is recommended prior to use. [More info](#)

OTI Annotation: This clone was engineered to express the complete ORF with an expression tag. Expression varies depending on the nature of the gene.

Components: The ORF clone is ion-exchange column purified and shipped in a 2D barcoded Matrix tube containing 10ug of transfection-ready, dried plasmid DNA (reconstitute with 100 ul of water).

RefSeq: [NM_001286722.2](#)

RefSeq Size: 5161 bp

RefSeq ORF: 3354 bp

Locus ID: 23196

UniProt ID: [Q9NZB2](#)

Cytogenetics: 9q22.31

MW: 122.3 kDa

Gene Summary: May participate in mRNA transport in the cytoplasm (By similarity). Critical component of the oxidative stress-induced survival signaling. Activates src family kinases and acts as a scaffolding protein enabling src family kinases to phosphorylate and activate PI3-kinase. Binds RNA and promotes the secretion of IGF-II. May play a pivotal role in the progression of scirrhou-type gastric cancer by supporting cancer cell survival in environments with various oxidative stresses.[UniProtKB/Swiss-Prot Function]