

Product datasheet for **RG239980**

BOC (NM_001301861) Human Tagged ORF Clone

Product data:

Product Type:	Expression Plasmids
Product Name:	BOC (NM_001301861) Human Tagged ORF Clone
Tag:	TurboGFP
Symbol:	BOC
Synonyms:	CDON2
Mammalian Cell Selection:	Neomycin
Vector:	pCMV6-AC-GFP (PS100010)
E. coli Selection:	Ampicillin (100 ug/mL)
ORF Nucleotide Sequence:	>RG239980 representing NM_001301861. Blue=ORF Red=Cloning site Green=Tag(s)

```
GCTCGTTTGTAGTGAACCGTCAGAATTTTGTAAATACGACTCACTATAGGGCGCCGGGAATTCGTGACTG
GATCCGGTACCGAGGAGATCTGCCGCCGCGATCGCC
ATGCTGCGTGGGACGATGACGGCGTGGAGAGGAATGAGGCCTGAGGTGACACTGGCTTGCCTCCTCCTA
GCCACAGCAGGCTGCTTTGCTGACTTGAACGAGGTCCCTCAGGTCACCGTCCAGCCTGCGTCCACCGTC
CAGAAGCCCGGAGGCACTGTGATCTTGGGCTGCGTGGTGAACCTCAAGGATGAATGTAACCTGGCGC
CTGAATGGAAAGGAGCTGAATGGCTCGGATGATGCTCTGGGTGTCCTCATCACCCACGGGACCTCGTC
ATCACTGCCCTTAAACAACCACTGTGGGACGGTACCAGTGTGTGGCCCGATGCCTGCGGGGGCTGTG
GCCAGCGTGCCAGCCACTGTGACTAGCCAATCTCCAGGACTTCAAGTTAGATGTGCAGCACGTGATT
GAAGTGGATGAGGAAACACAGCAGTCATTGCCTGCCACCTGCCTGAGAGCCACCCAAAGCCAGGTC
CGGTACAGCGTCAAACAAGAGTGGCTGGAGGCCTCCAGAGGTAACCTACCTGATCATGCCCTCAGGGAAC
CTCCAGATTGTAATGCCAGCCAGGAGGACGAGGGCATGTACAAGTGTGCAGCCTACAACCCAGTGACC
CAGGAAGTGAAAACCTCCGGCTCCAGCGACAGGCTACGTGTGCGCCGCTCCACCGCTGAGGCTGCCCGC
ATCATCTACCCCCAGAGGCCAAACCATCATCGTCACCAAAGGCCAGAGTCTCATTCTGGAGTGTGTG
GCCAGTGAATCCCACCCACGGGTCACTGGGCCAAGGATGGGTCCAGTGTACCCGGTACAACAAG
ACGCGCTTCTGCTGAGCAACCTCCTCATCGACACCACGAGGAGGACTCAGGCACCTACCGCTGC
ATGGCCGACAATGGGTTGGGACGCCCGGGCAGCGGTATCCTTACAATGCCAGGTGTTTGAACCC
CCTGAGGTCAACATGGAGCTATCCAGCTGGTTCATCCCTGGGGCCAGAGTGCCAAGCTTACCTGTGAG
GTGCGTGGGAACCCCGCCCTCCGTGCTGTGGTGTGAGGAATGCTGTGCCCTCATCTCCAGCCAGCGC
CTCCGGCTCTCCCGCAGGGCCCTGCGCGTGTGCTCAGCATGGGGCCTGAGGACGAAGCGTCTACAGTGC
ATGGCCGAGAACGAGGTTGGGAGCGCCATGCCGTAGTCCAGCTGCGGACCTCCAGGCCAAGCATAACC
CCAAGGCTATGGCAGGATGCTGAGCTGGCTACTGGCACACCTCCTGTATCACCCCTCAAACCTCGGCAAC
CCTGAGCAGATGCTGAGGGGCAACCGCGCTCCCGAGACCCCAACGTCAGTGGGGCTGCTTCCCGG
CAGTGTCCAGGAGAGAAGGGCAGGGGCTCCCGCGAGGCTCCCATCATCTCAGCTCGCCCCGACC
TCCAAGACAGACTCATATGAACTGGTGTGGCGCCTCGGCATGAGGGCAGTGGCCGGGCGCAATCCTC
```



[View online >](#)

TACTATGTGGTGAACACCCGCAAGCAGGTCACAAATTCCTCTGACGATTGGACCATCTCTGGCATTCCA
 GCCAACACGACCCGCTGACCCTCACCAGACTTGACCCGGGAGCTTGTATGAAGTGGAGATGGCAGCT
 TACAACTGTGCGGGAGAGGGCCAGACAGCCATGGTCACCTTCCGAACTGGACGGCGGCCAAACCCGAG
 ATCATGGCCAGCAAAGAGCAGCAGATCCAGAGAGACGACCTGGAGCCAGTCCCCAGAGCAGCAGCCAG
 CCAGACCACGGCCGCTCTCCCCCAGAAGCTCCCGACAGGCCACCATCTCCACGGCTCCGAGACC
 TCAGTGTACGTGACCTGGATTCCCCGTGGGAATGGTGGTTCCCAATCCAGTCTTCCGTGTGGAGTAC
 AAGAAGCTAAAGAAAGTGGGAGACTGGATTCTGGCCACCAGGCCATCCCCCATCGCGGTGTCGGTG
 GAGATCACGGCCCTAGAGAAAGGCACCTCTACAAGTTTCGAGTCCGGGCTCTGAACATGCTGGGGGAG
 AGCGAGCCACGCGCCCTCTCGGCCCTACGTGGTGTGGGCTACAGCGGTGCGGTGTACGAGAGGCC
 GTGGCAGTCTTATATCACCTTACGGATGCGGTCAATGAGACCACCATCATGCTCAAGTGGATGTAC
 ATCCCAGCAAGTAAACAACACCCCAATCCATGGCTTTTATATCTATTATCGACCCACAGACAGTAC
 AATGATAGTGACTACAAGAAGGATATGGTGAAGGGGACAAGTACTGGCACTCCATCAGCCACCTGCAG
 CCAGAGACCTCTACGACATTAAGATGCAGTGTCAATGAAGGAGGGGAGCGAGTTCAGCAACGTG
 ATGATCTGTGAGACCAAAGCTCGGAAGTCTTCTGGCCAGCCTGGTGGTCCACCCCAACTCTGGCC
 CCACCACAGCCGCCCTTCTGAAACCATAGAGCGGCCGGTGGGCACTGGGGCCATGGTGGCTCGTCC
 AGCGACCTGCCCTATCTGATTGTGGGGTGTCTGGGCTCCATCGTTCTCATATCGTACCTTATC
 CCCTTCTGCTTGTGGAGGGCCTGGTCTAAGCAAAAACATACAACAGACCTGGGTTTTCTCGAAGTGCC
 CTTCCACCCTCTGCCGTATACTATGGTGCCATTGGGAGGACTCCCAGGCCACCAGGCCAGTGGACAG
 CCCTACCTCAGTGGCATCAGTGGACGGGCTGTGCTAATGGGATCCACATGAATAGGGGCTGCCCTCG
 GCTGCAGTGGGCTACCCGGGCATGAAGCCCAGCAGCACTGCCAGGCGAGCTTCAGCAGCAGAGTGAC
 ACCAGCAGCTGCTGAGGACAGCCATCTTGGCAATGGATATGACCCCAAAGTACCAGATCACGAGG
 GGTCCCAAGTCTAGCCCGGACGAGGGCTCTTCTTATACACTGCCGACGACTCCACTACCAGCTG
 CTGCAGCCCATCAGCACTGCTGCCAACGCCAGGACGAGCCTGCTGCTGTGGGCCAGTCAAGGGTGAAG
 AGAGCCCCGACAGTCTGTCTTGGAAAGCAGTGTGGGACCTCCATTTCACTCAGGGCCCATGCTGC
 TTGGGCTTGTGCCAGTTGAAGAGGTGGACAGTCTGACTCTGCCAAGTGAAGTGGAGGAGACTGGTGT
 CCCCAGACCCCGTAGGGGCTACGTAGGACAGGAACCTGGAATGCAGCTCTCCCAGGGCCACTGGTG
 CGTGTGCTTTTGAACACCACCTCTACAATT

ACGCGTACGCGGCCGCTCGAG – GFP Tag – GTTTAAAC

Protein Sequence:

>Peptide sequence encoded by RG239980
 Blue=ORF Red=Cloning site Green=Tag(s)

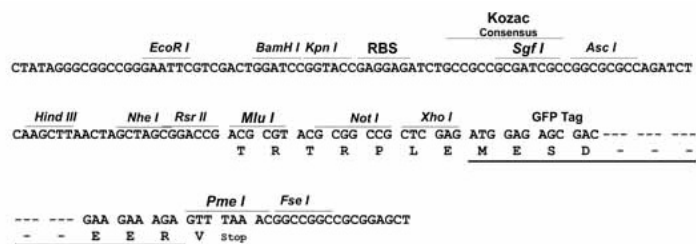
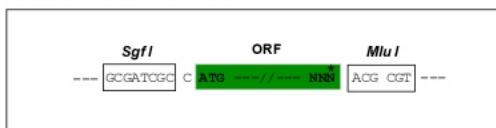
MLRGTMTAWRMRPEVTLACLALLATAGCFADLNEVPQVTVQPASTVQKPGGTIVILGCVVEPPRMNVTWR
 LNGKELNGSDDALGVLITHGLVITALNNHTVGRYQCVARMPAGAVASVPATVTLANLQDFKLDVQHVI
 EVDEGNTAVIACHLPESHKPAQVRYSVKQEWLEASRGNLIMPSGNLQIVNASQEDEGMYKCAAYNPVT
 QEVKTSGSSDRLRVRSTAEAAARIIPPEAQTIIIVTKGQSLILECVASGIPPRVTWAKDGSSVTGYNK
 TRFLLSNLLIDTTSEEDSGTYRCMADNGVGPAAVILYVQVFEPEVTMELSQLVIPWQSAKLTC
 VRGNPPPSVWLWRNAVPLISSQRLRLSRRALRVL SMGPEDEGVYQMAENEVGSAAHVQVLRTRSRPIT
 PRLWQDAELATGTPPVSPSKLGNPEQMLRGQPALPRPPTSVGPASPQCPGKQGAPAEAPIILSSPRT
 SKTDSYELVWRPRHEGSRAPILYYVVKHRKQVTNSSDDWTISGIPANQHRLTLTRLDPGSLYEVEAA
 YNCAGEGQAMVTFRTGRRPKPEIMASKEQQIQRDDPGASPQSSSQPDHGRLSPPEAPDRPTISTASET
 SVYVTWIPRNGGFPIQSFVRYEYKLLKVGDWILATSAIPPSRLSVEITGLEKTSYKFRVRALNMLGE
 SEPSAPSRPYVVSYSRGRVYERPAGPYITFTDAVNETT IMLKWMYIPASNNNTPIHGFYIYRPTDSD
 NDSYKDMVEGDYKWHSHLQPETSYDIKMQCFNEGGESEFSNMVICETKARKSSGQGRLLPPPTLA
 PPQPLPETIERPVGTGAMVARSSDLPYLIVGVVLSIVLIIIVTFIPFCLWRAWKQKHTTDLGFPRSA
 LPPSCPVTMVPLGGLPGHQASGQPYLSGISGRACANGIHMNRGCPSSAAVGYPMKQHQHCPGELQQQSD
 TSSLLRQTHLNGYDPQSHQITRGPKSSPDEGSFLYTL PDDSTHQLLQPHHDCQQRQEPAAVQSGVVR
 RAPDSPVLEAVWDPFFHSGPPCCLGLVPVEEVDSPDSCQVSGGDWCPQHPVGYVQEPGMQLSPGPLY
 RVSFETPPLTI

TRTRPLEMESDESGLPAMEIECRITGLNGVEFELVGGEGTPEQGRMTNKMSTKGALTFSPYLLSHV
 MGYGFYHFGTYPSGYENPFLHAINNGGYNTRIEKYEDGGVLHVSFSYRYEAGRVIGDFKVMGTGFPED
 SVIFTDKIIRSNATVEHLHPMGDNDLGSFTRTFSLRDGGYSSVVDSHMHFKSAIHPSILQNGGPMFA
 FRRVEEDHSNTELGIVEYQHAFKTPDADAGEERV

Restriction Sites: SgfI-MluI

Cloning Scheme:

Cloning sites used for ORF Shutting:

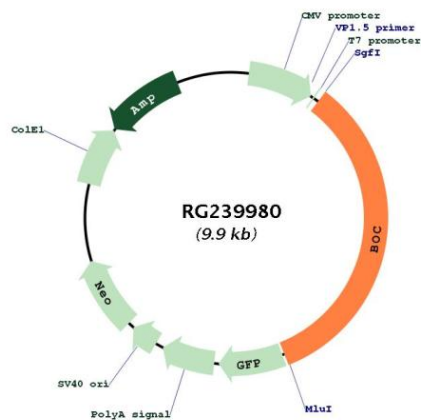


ACCN: NM_001301861

ORF Size: 3345 bp

OTI Disclaimer:	The molecular sequence of this clone aligns with the gene accession number as a point of reference only. However, individual transcript sequences of the same gene can differ through naturally occurring variations (e.g. polymorphisms), each with its own valid existence. This clone is substantially in agreement with the reference, but a complete review of all prevailing variants is recommended prior to use. More info
OTI Annotation:	This clone was engineered to express the complete ORF with an expression tag. Expression varies depending on the nature of the gene.
Components:	The ORF clone is ion-exchange column purified and shipped in a 2D barcoded Matrix tube containing 10ug of transfection-ready, dried plasmid DNA (reconstitute with 100 ul of water).
RefSeq:	NM_001301861.2
RefSeq Size:	4339 bp
RefSeq ORF:	3348 bp
Locus ID:	91653
UniProt ID:	Q9BWW1
Cytogenetics:	3q13.2
Protein Families:	Druggable Genome, Transmembrane
MW:	121.6 kDa
Gene Summary:	The protein encoded by this gene is a member of the immunoglobulin/fibronectin type III repeat family. It is a component of a cell-surface receptor complex that mediates cell-cell interactions between muscle precursor cells, and promotes myogenic differentiation. Alternative splicing results in multiple transcript variants encoding different isoforms. [provided by RefSeq, Sep 2014]

Product images:



Circular map for RG239980