

Product datasheet for **RG239979**

ZFP106 (ZNF106) (NM_001284307) Human Tagged ORF Clone

Product data:

Product Type:	Expression Plasmids
Product Name:	ZFP106 (ZNF106) (NM_001284307) Human Tagged ORF Clone
Tag:	TurboGFP
Symbol:	ZFP106
Synonyms:	SH3BP3; ZFP106; ZNF474
Mammalian Cell Selection:	Neomycin
Vector:	pCMV6-AC-GFP (PS100010)
E. coli Selection:	Ampicillin (100 ug/mL)
ORF Nucleotide Sequence:	>RG239979 representing NM_001284307. Blue=ORF Red=Cloning site Green=Tag(s)

```
GCTCGTTTGTAGTGAACCGTCAGAATTTTGTAAACGACTCACTATAGGGCGGCCGGGAATTCGTGACTG
GATCCGGTACCGAGGAGATCTGCCGCCGCGATCGCC
ATGGTACGAGAACGAAAATGCATATTATGCCACATCGTGTACAGCTCAAAAAAGGAGATGGACGAACAC
ATGCGGAGCATGTTGCATCACAGGGAACCTGAGAACCTCAAGGGCAGGTTTGGCATAGAAATGGTACCC
CTTGTTCAAAATGAACAAGAAGCCTTAGATTTGGATGGGGAACCTGATCTGTCCAGTCTAGAAGGATTC
CAGTGGGAAGGTGTTTCCATTTCTCGTCCCCTGGCTTGGCAAGAAAGCGAAGCCTTTCTGAGAGCAGC
GTGATCATGGACAGAGCTCCTTCTGTGTATAGCTTCTTCAGTGAGGAAGGTACAGGCAAAAGAAAATGAG
CCCCAGCAGATGGTTTCCACTAGTAACCTATTGAGGGCTGGACAGAGCCAGAAAGCAACCATGCACCTC
AAACAAGAAGTGACACCTCGGGCTGCCTCCCTCCGAACAGGTGAAAGGGCTGAAAATGTTGCTACCCAA
AGGCGACATAGTGACAATTATCCTCTGACCATATAATACCTTTGATGCATTTGGCAAAAGACTTGAAC
AGCCAGGAGAGGTCTATACCACCGTCAGAGAATCAGAATCCCAGGAGAGTAATGGAGAGGGAAACTGT
CTGTCAACAAGCGCATCCTCAGCCCTTGCAGTCTCCAGTTTAGCGGATGCAGCCACAGATAGTAGCTGT
ACCTCTGGTGCTGAACAAAATGATGGCCAAAGTATTAGAAAGAAACGAAGAGCCACTGGAGATGGATCT
TCTCCTGAACTCCAAGTCTTGAGAGAAAAATAAAGAAGGAAAATTAAGGAAAAAAGAAGCTTCT
CAGGTTGACCAGCTGCTGAATATTTCTTAAGGGAGGAAGAAGTCTAGTAAAGTATTGAGTGCATGGAT
AACAACTTCTGCAAGCCCGTGCAGCCCTCAGACAGCTTATGTGGAAGTTCAGAGGCTACTTATGCTC
AAGCAGCAGATAACTATGGAGATGAGTGACTGAGGACCATAGAATACAGATTCTACAGGGATTACAA
GAAACATATGAACCTTCTGAGCACCAGACCAGGTTCCCTGTAGCCTCACACGAGAACGAAGGAACAGT
AGATCTCAAACATCCATTGATGCCGCACTGCTGCCACTCCCTTTTTCCACTTTTTCTGGAGCCTCCA
TCTTCCCATGTGTCTCCATCACCACCGGAGCCTCTCTCAAATAACCACGTCTCCTACTTTCAAACC
CATGGCAGTGTCCCTGCTCCAGACTCATCAGTTTCAAGTAAACAAGAGCCCATGTCTCCTGAACAAGAT
GAGAATGTGAATGCTGTGCCACCAAGCTCTGCCTGCAATGTGTCCAAGGAATTACTGGAAGCTAATAGA
GAGATCAGTGACAGTTGTCCAGTTTATCCAGTCATCACTGCTAGATTGTCCTTACCAGAGTCAACAGAA
AGTTTCCATGAGCCTAGCCAAGAAGTGAAGTTTTCTGTGGAGCAAAAGAAATACCAGAAACAGAGAAAAC
```



[View online »](#)

TCTCCCTCTTCCAATCAGCTGGTCTTTCTAGCATAAATAAAGAAGGGGAAGAGCCAACCAAGGCAAT
 AGTGGGCTGAAGCCTGTACCAGTCTTTTCTAAGATTGTCTTTGCTTCAGAAACCCCTTTGGAGAAG
 GAACCCACTCTCCAGCTGACCAGCCTGAACAACAGGCAGAAATCCACTTTGACATCAGCTGAGACTAGG
 GGAAGCAAGAAAAAGAAGAACTCCGGAAGAAGAAAAGTCTACGGGCTGCCCATGTTCTCTGAGAATAGT
 GACTGAAACAGGATGTTTTGACTGTTAAACCTGTAAGGAAAGTAAAAGCTGGAAAGTTAATTAAGGG
 GGGAAAGTAACAACCTCCACTTGGGAAGACAGCAGGACTGGTGGGAGCAGGAGAGTGTGAGAGATGAG
 CCAGATAGTGACTCGTCTCTGGAAGTCTAGAAATTCCTAATCCTCAGTTAGAAGTAGTACCATTGAT
 TCTTCAGAAATCAGGAGAAGAGAAACAGACAGCCCATCTAAAAAGGATATTTGGAATCTACAGAGCAA
 AACCCACTAGAAACGTCTCGTTCTGGGTGTGATGAAGTTAGTCTACCAGTGAAATTGGCACTCGTAT
 AAAGATGGCATCCCTGTAAGTGTGGCAGAACTCAGACTGTGATCTCCTCCATAAAAGGATCAAAGAAT
 TCTTCAGAAATATCTTCAGAGCCAGGAGATGATGATGAACCCACAGAAGGAAGCTTTGAGGGACACCAA
 GCTGCCGTAATGCAATTCAGATATTTGGGAAGTGTATATACCTGTTGAGCAGATAAACTGTTCCGG
 GTTTATAATCTGGTGAGTCGAAATGTATTGGTGTCTTTGAGGGTCATACCTCCAAAGTTAACTGCCTC
 CTGTTACTCAGACCTCCGGGAAGAATGCTGCCCTTTACACCGGGTCCAGTGACCATACCATCCGCTGC
 TATAATGTTAAGAGCCGAGAGTGTGTGGAGCAGTTACAGCTGGAAGACCGGGTCTCTGCCTCCACAGT
 AGATGGCGAATCCTCTATGCGGGACTGGCAATGGCACTGTGGTACCTCAACATAAAGAAACAACAAA
 CGACTTGAGATCTTTGAATGCCATGGCCCTCGGGCAGTCAGTGTCTTGCTACAGCTCAGGAAGGTGCC
 CGAAAACCTGCTGGTCTGGGGTCTTATGACTGCACAATTAGTGTACGCGATGCCCGAATGGACTGCTC
 CTCAGAACTCTGGAGGGCCATAGCAAAACCATTCTTTCATGAAGGTGGTGAATGATCTCGTGTTCAGT
 GGCTCCAGTGATCAGTCAGTCCATGCTCACAACATTCACACTGGTGAGCTCGTGGGATCTATAAAGGT
 CACAATCATGCAGTGACTGTGGTGAATATCCTAGGAAAAGTGTGGTACTGCTTGCTGGATAAATTT
 GTTCGTGTCTATGAATTACAGTCTCATGATCGATTACAAGTTTATGGAGGACACAAGACATGATTATG
 TGTATGACCATCCATAAAAGCATGATTTACACTGGCTGTTATGATGGCAGTATTACAGGCGTGAGGCTT
 AATCTGATGCAGAATTACCGCTGTTGGTGGCATGGTTGCTCTCTGATATTTGGCGTGTAGATCATTTA
 AAACAACACTTGCTGACCAGCACACTAATCCCAACTCCAGACTCTGAAATGTCGCTGGAAAGACTGC
 GATGCTTTTTTCACTGCTAGGAAAGGATCCAAACAGGATGCTGCAGGACATATTGAACGACATGCTGAA
 GATGACAGCAAAATTGATTCA

ACGCGTACGCGGCCGCTCGAG – GFP Tag – GTTTAAAC

Protein Sequence:

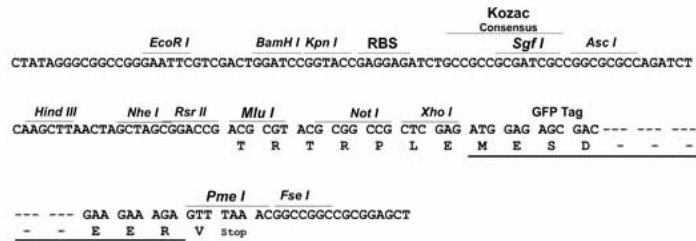
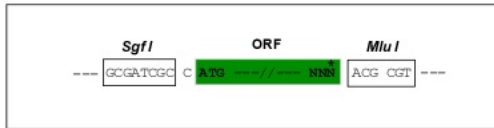
>Peptide sequence encoded by RG239979
 Blue=ORF Red=Cloning site Green=Tag(s)

MVRRKCILCHIVYSSKKEMDEHMRSMLHRELENLKRFGIEMVPLVQNEQEALDLGEPDLSLEGF
 QWEGVSISSPGLARKRSLSESSVIMDRAPSVYSFFSEEGTKENEPQQMVSPNSLRAGQSQKATMHL
 KQEVTPRAASLRTERAENVATQRRHSAQLSSDHIIPMLHLAKDLSQERSIPPSSENQNSQESNGEGNC
 LSSASSALAISSLADAATDSSCTSGAEQNDGQSIKRRRATGDGSSPELPSLERKNKRRKIKGKKERS
 QVDQLNLSLREEELSKSLQCMDNLLQARAALQTAYVEVQRLMLKQQITMEMSALRTHRIQILQGLQ
 ETYEPSEHPDQVPCSLTRERRNSRSQTSIDAALLPTFFPLFLEPPSSHVSPSPTGASLQITTSPTFQT
 HGSVPAPDSSVQIKQEPMSPEQDENVNAPPSSACNVSKELLEANREISDSCPVPVITARLSLPESTE
 SFHEPSQELKFSVEQRNTRNRENSPSSQSAGLSSINKEGEEPTKNGSGSEACTSSFLRLSFASETPLEK
 EPHSPADQPEQAESTLTS AETRGSKKKKLRKKKSLRAAHVPENSDEQDVLTVKPVKVKAGKLIK
 GKVTTSTWEDSRTGREQESVRDEPDSDSLSEVLEIPNPQLEVVAIDSSSEEGEKPDPSPKDIWNSTEQ
 NPLETSRSGCDEVSSTSEIGTRYKDGIPVSAETQTVISSIKGSKNSSEISSEPGDDDEPTEGSFEGHQ
 AAVNAIQIFGNLLYTCSADKTVRVYVNLVSRKICIGVFEGHTSKVNCLLVQTSGKNAALYTGSSDHTIRC
 YNVKSRECVLQLEDRVLCVLSRWRILYAGLANGTVVTFNIKNNKRLIFECHGPRVAVSLATAQEGA
 RKLLVGSYDCTISVRDARNGLLLRLEGHSKTILCMKVNDLVFSGSSDQSVHAHNIHTGELVRIYKG
 HNHAVTVVNIILGKVMVTACLKFVRVYELQSHDRLLQVYGGHKDMCMITHKSMIYTGCDGSIQAVRL
 NLMQNYRCWWHGCSLIFGVVDHLKQHLLTDHTNPNFQTLKCRWKNCDAFFTARKGSKQDAAGHIERHAE
 DDSKIDS
 TRTRPLEMESDESGLPAMEIECRITGTLNGVEFELVGGGEGTPEQGRMTNKMSTKGALTFSPYLLSHV
 MGYGFYHFGTYPSGYENPFLHAINNGGYNTRIEKYEDGGVLHVSFSYRYEAGRVIGDFKVMGTGFPED
 SVIFTDKIIIRSNAVEHLHPMGDNDLDGSFTRTFSLRDGGYSSVVDSSHMHFKSAIHPSILQNGGPMFA
 FRRVEEDHSNTELGIVEYQHAFKTPDADAGEERV

Restriction Sites: SgfI-MluI

Cloning Scheme:

Cloning sites used for ORF Shuttling:

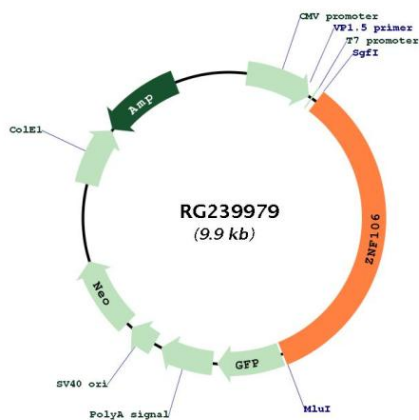


ACCN: NM_001284307

ORF Size: 3333 bp

OTI Disclaimer:	The molecular sequence of this clone aligns with the gene accession number as a point of reference only. However, individual transcript sequences of the same gene can differ through naturally occurring variations (e.g. polymorphisms), each with its own valid existence. This clone is substantially in agreement with the reference, but a complete review of all prevailing variants is recommended prior to use. More info
OTI Annotation:	This clone was engineered to express the complete ORF with an expression tag. Expression varies depending on the nature of the gene.
Components:	The ORF clone is ion-exchange column purified and shipped in a 2D barcoded Matrix tube containing 10ug of transfection-ready, dried plasmid DNA (reconstitute with 100 ul of water).
RefSeq:	NM_001284307.4
RefSeq Size:	8462 bp
RefSeq ORF:	3336 bp
Locus ID:	64397
UniProt ID:	Q9H2Y7
Cytogenetics:	15q15.1
MW:	123.3 kDa
Gene Summary:	RNA-binding protein. Specifically binds to 5'-GGGGCC-3' sequence repeats in RNA. Essential for maintenance of peripheral motor neuron and skeletal muscle function. Required for normal expression and/or alternative splicing of a number of genes in spinal cord and skeletal muscle, including the neurite outgrowth inhibitor RTN4. Also contributes to normal mitochondrial respiratory function in motor neurons, via an unknown mechanism. [UniProtKB/Swiss-Prot Function]

Product images:



Circular map for RG239979