

Product datasheet for **RG239978**

KCNT2 (NM_001287819) Human Tagged ORF Clone

Product data:

Product Type:	Expression Plasmids
Product Name:	KCNT2 (NM_001287819) Human Tagged ORF Clone
Tag:	TurboGFP
Symbol:	KCNT2
Synonyms:	EIEE57; KCa4.2; SLICK; SLO2.1
Mammalian Cell Selection:	Neomycin
Vector:	pCMV6-AC-GFP (PS100010)
E. coli Selection:	Ampicillin (100 ug/mL)
ORF Nucleotide Sequence:	>RG239978 representing NM_001287819. Blue=ORF Red=Cloning site Green=Tag(s)

```
GCTCGTTTAGTGAACCGTCAGAATTTTGTAAACGACTCACTATAGGGCGGCCGGGAATTCGTCGACTG
GATCCGGTACCGAGGAGATCTGCCGCCGCGATCGCC
ATGGTTGATTTGGAGAGCGAAGTGCCCCCTCTGCCTCCAGGTACAGGTTTCGAGATTTGCTGCTAGGG
GACCAAGGATGGCAAACGACGACAGGGTACAAGTTGAATTCTATATGAATGAAAATACATTTAAAGAA
AGACTAAAATTATTTTTCATAAAAAACCAGAGATCAAGTCTAAGGATACGCCTGTTCAATTTTCTCTC
AAACTACTAAGCTGCTTATTATACATAATCCGAGTACTACTAGAAAACCTTTCACAAGGAAATGAATGG
TCTCATATCTTTGGGTGAACAGAAGTCTACCTTTGTGGGGCTTACAGGTTTCAGTGGCATTGATAAGT
CTGTTTGAACAATATTACTTGGTTATCTTAGTTATAAGGAAACATCTGGGAACAGATTTTACGAATA
CCCTTCATCTTGAAATAATTAATGCAGTTCCTTCATTATCTCAATATTCTGGCCTTCCTTAAGGAAT
CTATTTGTCCCAGTCTTTCTGAACTGTTGGCTTGCCAAACATGCCTTGGAAAATATGATTAATGATCTA
CACAGAGCCATTCAGCGTACACAGTCTGCAATGTTAATCAAGTTTTGATTTTAAATCTACACTACTA
TGCCTTATCTTACCTGCATTTGTGGGATCCAACATCTGGAACGAATAGGAAAGAAGCTGAATCTCTTT
GACTCCCTTATTTCTGCATTGTGACGTTTTCTACTGTGGGCTTCGGGATGTCCTCCTGAAACATGG
TCCTCAAAGCTTTTTGTAGTTGCTATGATTTGTGTTGCTCTTGTGGTTCTACCCATACAGTTTGAACAG
CTGGCTTATTTGGATGGAGAGACAAAAGTCAGGAGGAAACTATAGTCGACATAGAGCTCAAACCTGAA
AAGCATGTCGTCCTGTGTGTCAGCTCACTGAAGATTGATTTACTTATGGATTTTTAAATGAATTTCTAT
GCTCATCCTAGGCTCCAGGATTATTATGTGGTGATTTTGTGTCCTACTGAAATGGATGTACAGGTTTCTGA
AGGGTACTGCAGATTCGAATGTGGTCCCAACGAGTTATCTACCTTCAAGTTTCAGCCCTTAAAGATCAA
GACCTATTGAGAGCAAAGATGGATGACGCTGAGGCCTGTTTTATTCTCAGTAGCCGTTGTGAAGTGGAT
AGGACATCATCTGATCACCAAACAATTTTGTAGGATGAGGCTGTGAAAGATTTTGTCCAAATTTGCTCCT
TTGTATGTCCAGATTTAAAGCCTGAAAATAAATTTTACATCAAATTTGCTGATCATGTTGTTTGTGAA
GAAGAGTTTAAATACGCCATGTTAGCTTTAAACTGTATATGCCAGCAACATCTACACTTATTACACTA
CTGTTTACATACCTCTAGAGGGCAAGAAGGCCAGCAATCGCCAGAACAATGGCAGAAGATGTACGGTAGA
TGCTCCGGGAATGAAGTCTACCACATTGTTTTGAAGAAAGTACATTTTTGCTGAATATGAAGGAAAG
```



[View online »](#)

AGTTTTACATATGCCTCTTTCCATGCACACAAAAAGTTTGGCGTCTGCTTGATTGGTGTAGGAGGGAG
 GATAATAAAAAACATTTTCTGAATCCAGGTCTCGATACATTATGAATCTACAGACATATGCTTTTAT
 ATTAATATTACCAAAGAAGAAATTACAGATTTAAAAACCAAGACCAGCAGAGAAAAAGCAATGTGTCC
 AGGTCGTTTTATCATGGACCTCCAGATTACCTGTACATAGCATAAATGCCAGCATGGGTACTGTGGCT
 ATAGACTTGCAAGATAACAAGCTGTAGATCAGCAAGTGGCCCTACCCTGTCTTCTACAGAGGGAAGC
 AAAGAAATAAGAAGACCTAGCATTGCTCCTGTTTTAGAGGTTGCAGATACATCATCGATTCAAACATGT
 GATCTTCTAAGTGACCAATCAGAAGTGAACACTACACCAGATGAAGAAATGTCTTCAAACCTAGAGTAT
 GCTAAAGGTTACCCACCTTATTCTCCATATATAGGAAGTTCACCCACTTTTTGTCTCATCTCCTTCATGAA
 AAAGTACCATTTTCTGCTTAAGATTAGACAAGAGTTGCCAACATAACTACTATGAGGATGCAAAAAGCC
 TATGGATTCAAAAATAAACTAATTATAGTTGCAGCTGAAACAGCTGGAATGGATTATATAACTTTATT
 GTTCTCTCAGGGCATAATTATAGACCAAAGAAAGAACTTAATCCCATAGTACTGTATTGGATAACCCC
 CTAGATGACTTACTCAGGTGTGGAGTACTTTTCTGCTAATATGGTGGTTGTGGATAAAGAGAGCACC
 ATGAGTGCCGAGGAAGACTACATGGCAGATGCCAAAACCATGTGAACGTGCAGACACTCTCAGGTTG
 TTTTCCAGTCTCAGTATTATCACAGAGCTAACTCACCCGCCAACATGAGATTGCAATTCAGAGCC
 AAAGACTGTTACTCTCTTCTGCTTTTCAAACCTGGAAAAGAAAGAACGGGAGAGAGGCTCTAACTTGCC
 TTTATGTTTCGACTGCCTTTTCTGCTGGGAGGGTGTAGCATCAGTATGTTGGACACTCTGCTGTAT
 CAGTCATTTGGAAGGATTATATGATTTCTATCACGAGACTTCTGTTGGGACTGGACACTACACCAGGA
 TCTGGGTTTCTTCTGCTATGAAAATCACTGCAGATGACTTATGGATCAGAACTTATGCCAGACTTAT
 CAGAAGTTGTGTTCTTCTACTGGAGATGTTCCATTGGAATCTACAGGACTGAGTCTCAGAACTTACT
 ACATCTGAGTCTCAAATATCTATCAGTGTAGAAGAGTGGGAAGACACCAAAGACTCCAAAGAACAAGGG
 CACCACCGCAGCAACCACCGCAACTCAACATCCAGTGTACAGTCGGACCATCCCTGTCTCGGAGAAAA
 AGCATGCAGTGGCCCGAAGACTGAGCAGAAAAGGCCAAAACACTCTGGTAAAACAGCTGAAAAATA
 ACCCAGCAGCAGTGAACCTCTACAGGAGGTGAGAAAAGACAAGAGCTTCTGTAACCTGTGAAAAATA
 ATGAAAACACTTGGGTCTTCTACAGTGGGATATGATGAAATGAATGATCATCAAAGTACCCTCTCTAC
 ATCCTGATTAACCCATCTCCAGATACCAGAATAGAGCTGAATGATGTTGTATACTTAATTCGACCAGAT
 CCACTGGCCTACCTTCAAACAGTGAAGCCAGTGAAGAAAACAGCATCTGCAATGCTCACTGGTCAAGAT
 TCTCGGGAGGAACTCAACTT

ACGCGTACGCGGCCGCTCGAG - GFP Tag - GTTTAAAC

Protein Sequence:

>Peptide sequence encoded by RG239978
 Blue=ORF Red=Cloning site Green=Tag(s)

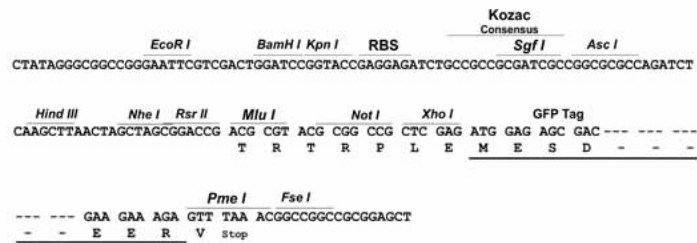
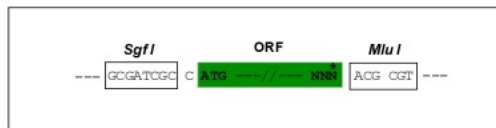
MVDLESEVPPLPPRYRFRDLLLLGDQGWQNDRRVQVEFYMENTFKERLKLFFIKNQRSSLRIRLNFSL
 KLLSCLLYIIRVLEENPSQGNESHIFWVNRSLPLWGLQVSVALISL FETILLGYLSYKNGIWEQILRI
 PFLEIINAVPFIISIFWPSLRNLFVVPFLNCWLAKHALENMINDLHRAIQRQTQSAMFNQVILISTLL
 CLIFTCICGIQHLEIRIGKLNLFDSLFCIVTFSTVGFVDVTPETWSSKLFVAMICVALVVLPIQFEQ
 LAYLWMERQKSGGNYSRHRQAQTEKHVLCVSSKIDLLMDFLNEFYAHPRLQDYVVVILCPTMDVQVR
 RVLQIPMWSQRVIYQLQSALKDQDLLRAKMDDAEACFILSSRCEVDRTSSDHQITLRAWVKDFAPNCP
 LYVQILKPENKFHFKFADHVVEEFKYAMLALNCICPATSTLITLLVHTSRGQEQQSPEQWQKMYGR
 CSGNEVYHIVLEESTFFAEYEGKSFTYASFHAKKFGVCLIGVRREDNKNILLNPGPRYIMNSTDICFY
 INITKEENSAFKNQDQQRKSNVSRSFYHGSPRLPVHSIIASMGTVAIDLQDTSRCSASGPTLSLPTEGS
 KEIRRPISAPVLEVADTSSIQTCDLLSDQSEDETTPDEEMSSNLEYAKGYPPYSPYIGSSPTFCHLLHE
 KVPFCCLRLDKSCQHNYEDAKAYGFKNKLIIVAAETAGNGLYNFIVPLRAYRPPKELNPIVLLDNP
 LDDLLRCGVTFANMVVDKESTMSAEEDYMAKTIIVNVQTLFRLFSSLSIITELTHPANMRFMQFRA
 KDCYSLALSKLEKKERERGSNLAFMFRLPFAAGRVSISMLDTLLYQSFVKDYMSITRLLGLDTPG
 SGFLCSMKITADDLWIRTYARLYQKLCSSSTGDVPIGIYRTESQKLTSESQISISVEEWEDTKDSKEQG
 HHRSNHRNSTSSDQSDHPLLRRKSMQWARRLSRKGPKHSGKTAEKITQRLNLYRRSERQELAEVKNR
 MKHLGLSTVGYDEMNDHQSTLSYILINSPDTRIELNDVVYLIRPDPLAYLPNSEPSRRNSICNVTGQD
 SREETQL

TRTRPLEMESDESGLPAMEIECRITGLNGVEFELVGGGEGTPEQGRMTNKMSTKGALTFSPYLLSHV
 MGYGFYHFGTYPSGYENPFLHAINNGGYNTRIEKYEDGGVLHVSFSYRYEAGRVIGDFKVMGTGFPED
 SVIFTDKIIRSNATVEHLHPMGDNDLDGSFTRTFSLRDGGYSSVVDSHMHFKSAIHPSILQNGGPMFA
 FRRVEEDHSNTELGIVEYQHAFKTPDADAGEERV

Restriction Sites: SgfI-MluI

Cloning Scheme:

Cloning sites used for ORF Shuttling:

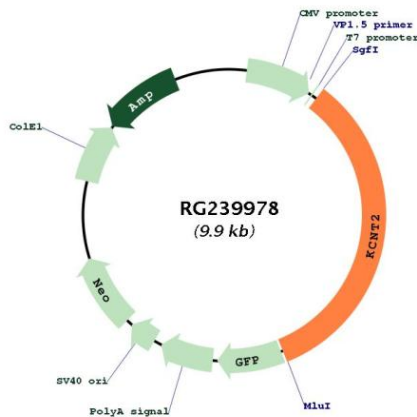


ACCN: NM_001287819

ORF Size: 3333 bp

OTI Disclaimer:	The molecular sequence of this clone aligns with the gene accession number as a point of reference only. However, individual transcript sequences of the same gene can differ through naturally occurring variations (e.g. polymorphisms), each with its own valid existence. This clone is substantially in agreement with the reference, but a complete review of all prevailing variants is recommended prior to use. More info
OTI Annotation:	This clone was engineered to express the complete ORF with an expression tag. Expression varies depending on the nature of the gene.
Components:	The ORF clone is ion-exchange column purified and shipped in a 2D barcoded Matrix tube containing 10ug of transfection-ready, dried plasmid DNA (reconstitute with 100 ul of water).
RefSeq:	NM_001287819.3
RefSeq Size:	5903 bp
RefSeq ORF:	3336 bp
Locus ID:	343450
UniProt ID:	Q6UVM3
Cytogenetics:	1q31.3
Protein Families:	Druggable Genome, Ion Channels: Potassium, Transmembrane
MW:	128.1 kDa
Gene Summary:	Outward rectifying potassium channel. Produces rapidly activating outward rectifier K(+) currents. Activated by high intracellular sodium and chloride levels (PubMed:14684870, PubMed:16687497, PubMed:29069600). Channel activity is inhibited by ATP and by inhalation anesthetics, such as isoflurane (PubMed:16687497) (By similarity). Inhibited upon stimulation of G-protein coupled receptors, such as CHRM1 and GRM1 (PubMed:16687497). [UniProtKB/Swiss-Prot Function]

Product images:



Circular map for RG239978