

Product datasheet for **RG239976**

PRKCBP1 (ZMYND8) (NM_001281776) Human Tagged ORF Clone

Product data:

Product Type:	Expression Plasmids
Product Name:	PRKCBP1 (ZMYND8) (NM_001281776) Human Tagged ORF Clone
Tag:	TurboGFP
Symbol:	PRKCBP1
Synonyms:	PRKCBP1; PRO2893; RACK7
Mammalian Cell Selection:	Neomycin
Vector:	pCMV6-AC-GFP (PS100010)
E. coli Selection:	Ampicillin (100 ug/mL)
ORF Nucleotide Sequence:	>RG239976 representing NM_001281776. Blue=ORF Red=Cloning site Green=Tag(s)

```
GCTCGTTT TAGTGAACCGTCAGAATTTTGT AATACGACTCACTATAGGGCGGCCGGGAATTCGTCGACTG
GATCCGGTACCGAGGAGATCTGCCGCC CGCATCGCC
ATGCATCCACAGAGCTTGGCTGAAGAGGAAATAAAAACAGAACAGGAGGTGGTAGAGGGCATGGATATC
TCTACTCGCTCAAAGATCCTGGCTCTGCAGAGAGAACAGCCCAGAAAAGAAAGTTCCCCAGCCCTCCA
CATTCTTCCAATGGCCACTCGCCG CAGGACACATCAACAAGCCCCATTAAAAAGAAAAAGAAACCTGGC
T TACTGAACAGTAACAATAAGGAGCAGTCAGA ACTAAGACATGGTCCGTTTTACTATATGAAGCAGCCA
CTCACCACAGACCCTGTTGATGTTGTACCGCAGGATGGACGGAATGATTTCTACTGCTGGTTTTGTCAC
CGGAAGGCCAAGTCCTTTGCTGTGAGCTCTGTCCCCGGTTTTATCAGCTAAGTGTCTGAGACTGACA
TCGGAAC CAGAGGGGACTGGTTTTGTCCTGAATGTGAGAAAATTACAGTAGCAGAATGCATCGAGACC
CAGAGTAAAGCCATGACAATGCTCACCATTGAACAGTTATCCTACCTGCTCAAGTTTGCCATT CAGAAA
ATGAAACAGCCAGGGACAGATGCATTCCAGAAGCCGTTCCATTGGAACAGCACCCCTGACTATGCGGAA
TACATCTTCCATCCAATGGACCTTTGTACATTGGAAAAGAATGCGAAAAAGAAAAATGATGGCTGCACA
GAAGCCTTCTGGCTGATGCAAAGTGGATTTTGCACA CTGCATCATTTATAATGGGGGAAATCACAAA
TTGACGCAAATAGCGAAAGTAGTCATCAAAATCTGTGAACATGAGATGAATGAAATCGAAGTATGTCCA
GAATGTTATCTAGCTGCTTGCCAAAAACGAGATAACTGGTTTTGTGAGCCTTG TAGCAATCCACATCCT
TTGGTCTGGGCCAAACTGAAGGGTTTTCCATTCTGGCCTGCAAAAGCTCTAAGGGATAAAGACGGGCAG
GTCGATGCCCGATTCTTTGGACAACATGACAGGGCCTGGGTTCCAATAAATAATTGCTACCTCATGTCT
AAAGAAATTCCTTTTTCTGTGAAAAAGACTAAGAGCATCTTCAACAGTGCCATGCAAGAGATGGAGGTT
TACGTGGAGAACATCCGCAGGAAGTTTGGGGTTTTTAATTACTCTCCATTTAGGACACCCTACACACCC
AACAGCCAGTATCAAAATGCTGCTCGATCCCAACACCCAGCGCCG CACTGCCAAGATAGACAAGCAG
GAGAAGGTCAAGCTCAACTTTGACATGACGGCATCCCCAAGATCCTGATGAGCAAGCCTGTGCTGAGT
GGGGGCACAGGCCCGGATTTCCTTGTGCGATATGCCGCTCCCCATGAGCACAAACTTTCTGTG
CACACGGGCTCCGACGTGGAGCAGGATGCTGAGAAAGAGCCACGTCGAGCCACTTCAGTCCGAGCGAG
GAGTCCATGGACTTCTGGATAAGAGCACAGCTTCACCAGCTCCACCAAGACGGGACAAGCAGGGAGT
```



[View online »](#)

```

TTATCCGGCAGCCCAAAGCCCTTCTCTCCTCAACTGTCTAGCTCCTATCACGACGAAAACGGACAAAACC
TCCACCACCGGCAGCATCCTGAATCTTAACCTGGATCGAAGCAAAGCTGAGATGGATTTGAAGGAGCTG
AGCGAGTCGGTCCAGCAACAGTCCACCCCTGTTCTCTCATCTCTCCCAAGCGCCAGATTCGTAGCAGG
TTCCAGCTGAATCTTGACAAGACCATAGAGAGTTGCAAAGCACAATTAGGCATAAATGAAATCTCGGAA
GATGTCTATACGGCCGTAGAGCACAGCGATTCCGAGGATTCTGAGAAGTCAGATAGTAGCGATAGTGAG
TATATCAGTGATGATGAGCAGAAGTCTAAGAACGAGCCAGAAGACACAGAGGACAAGAAGTTGTCTAG
ATGGCAAAGAGCCATCTGCTGTTAAAAAAGCCCAAGCCTACAACCCAGTGAGATTAAGAGGAGAG
CTGAAAAGCAGCTCACCAGCCAGCGAGAAGGCAGACCCTGGAGCAGTCAAGGACAAGGCCAGCCCTGAG
CCTGAGAAGGACTTTTCCGAAAAGGCAAAACCTTACCTCACCCATAAAGGATAAACTGAAGGAAAA
GATGAGACGGATTCCCAACAGTCCATTTGGCCTGGACTCTGATTCAGAGAGCGAACTTGTATAGAT
TTAGGAGAAGACCATTCTGGCGGGAGGGTCGAAAAAATAAGAAGGAACCCAAAGAACCCTCCCAAA
CAGGATGTGTCCAGCAGAAGGAGATCACACAGAGCCATCCACGTCCACCATCACCTGGTGACCAGC
ACACAGTCATCGCCCCTGGTCCAGCTCGGGTCCATGAGCACCTTGTCTCAGTCAACGCTGAC
CTGCCCATCGCCACTGCCTCAGTGATGTCCGCTGATATTGCCAAGTACTAGCAAAATGATGGAT
GCAATAAAGGAACAATGACAGAAATATAACAAGTCTTTCTAAAAACTACTGGAAGCACAATAGCT
GAGATTCGAGGCTGAGGATCGAGATAGAGAAGCTCCAGTGGCTGCACCAGCAAGAGCTCTCCGAAATG
AAACACAACCTTAGAGTGACCATGGCGGAGATGCGGCAGAGCCTGGAGCAGGAGCGGGACCGGCTCATC
GCCGAGGTGAAGAAGCAGCTGGAGTTGGAGAAGCAGCAGGCGGTGGATGAGACCAAGAAGAAGCAGTGG
TGCGCAAACCTGCAAGAAGGAGGCCATCTTTACTGCTGTTGGAACACCAGCTACTGTGACTACCCCTGC
CAGCAAGCCACTGGCCTGAGCAGATGAAGTCTGCACCCAGTCAGTACTGCTCCTCAGCAGGAAGCG
GATGCTGAGGTGAACACAGAAACTAAATAAGTCTCCAGGGGAGCTCCTCGAGCACACAATCAGCA
CCTTCAGAAACGCCAGCGCCTCCAAGAGAAGGAGACGTGAGTGAAGCAAGGAGAGTGGCTCG
ACCTTACCTTTCTGGCTCCAGAGAGACGCCCTCCTCCATTCTTTAGGCTCCAACCAAGCTGTGTT
AGCAAAAAGGTGTGACAAGCAACCTGCCTATGCCCAACACCACAGACCACCGCCACCCCACTAC
CCCGCCAGAAAGTACCATTCCCGGAGTAATAAATCCAGTTGGAGCAGCAGTATGAGAAGAGGGATCG
ACACGTTCCGATCACAACACCAGTACCAGCACGAAGGCCTCTCCGAAAGAGTCTCGGCTGGACACC
TTCTGGGAC
    
```

ACGCGTACGCGGCCGCTCGAG – GFP Tag – GTTTAAAC

Protein Sequence:

>Peptide sequence encoded by RG239976
 Blue=ORF Red=Cloning site Green=Tag(s)

```

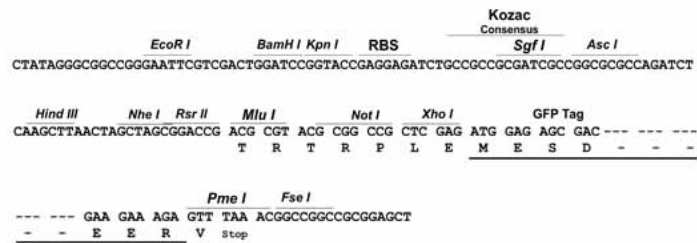
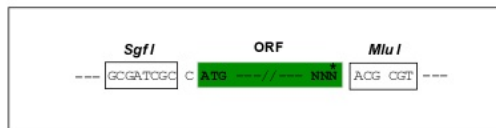
MHPQSLAEEEEIKTEQEVVEGMDISTRKDPGSAERTAQRKRFSPPHSSNGHSPQDTSTSPIKKKKKPG
LLNSNNKEQSELRHGPFYMKQPLTTDPVDVVPQDGRNDFYCWVCHREGQVLCCELCPRVYHAKCLRLT
SEPEGDFWCPECEKITVAECIETQSKAMTLTIEQLSYLLKFAIQMKQPGTDAFQKVPVLEQHPDYAE
YIFHPMDLCTLEKNAKKKMYGCTEAFADAKWILHNCIIYNGGNHKLQIAKVVIKICEHEMNEIEVCP
ECYLAACQKRDNWFCEPCSNPHPLVWAKLKGFPFPAKALRDKGQVDARFFGQHDRAWVPINNCYLMS
KEIPFVSKKTKSIFNSAMQEMEYVENIRRKFGVFNYSFRTPTYPNSQYQMLLDPTNPSAGTAKIDKQ
EKVKLNFDMTASPKILMSKPVLGGTGRRI SLSDMPRSPMSTNSSVHTGSDVEQDAEKATSSHFSAE
ESMDFLDKSTASPASTKTGQAGSLSGSPKPFSPQLSAPITTKDKTSTTGSILNLDNRKAEMDLKEL
SESVQQSTPVPPLISPKRQIRSRFQLNLDKTIESCKAQLGINEISEDVYTAVEHSDSESEKSDSSDSE
YISDDEQKSKNEPEDTEDKEGCQMDKESAVKKKPKPTNPVEIKEELKSTSPASEKADPGAVKDKASPE
PEKDFSEKAKPSPHPIKDKLKGKDETDSPVHLGLDSDSESELVIDLGEDHSGREGRKKNKKEPKPSK
QDAVQQKEITQSPSTSTITLVTSTQSSPLVTSVSNADLPIATASADVAADIAKYTSKMMD
AIKGTMTIEYNDLSKNTTGSTIAEIRRLRIEIKLQWLHQQLSEMKNLEL TMAEMRQSLERDRLI
AEVKKQLELEKQAVDETKKKQWCANCKKEAIFYCCWNTSYCDYPCQQAHWPEHMKCTQSATAPQGEA
DAEVNTE TLNKSSQSSSTQSAPSETASASKEKETSAEKSESGSTLDLGSRETPSSILLGSNQGVS
SKRCDKQPAYAPTTTTDHQPHPNYPAQKYHRSRNSKSSWSSSDEKRGSTRSDHNTSTSTKSLLPKESRLDT
FWD
    
```

TRTRPLEMESDESGLPAMEIECRITGLNGVEFELVGGGEGTPEQGRMTNKMSTKGALTFSPYLLSHV
 MGYGFYHFGTYPSGYENPFLHAINNGGYNTRIEKYEDGGVLHVSFSYRYEAGRVIGDFKVMGTGFPED
 SVIFTDKIIRSNATVEHLHPMGDNDLDGSFTRTFSLRDGGYSSVVDSHMHFKSAIHPSILQNGGPMFA
 FRRVEEDHSNTELGIVEYQHAFKTPDADAGEERV

Restriction Sites: SgfI-MluI

Cloning Scheme:

Cloning sites used for ORF Shuttling:

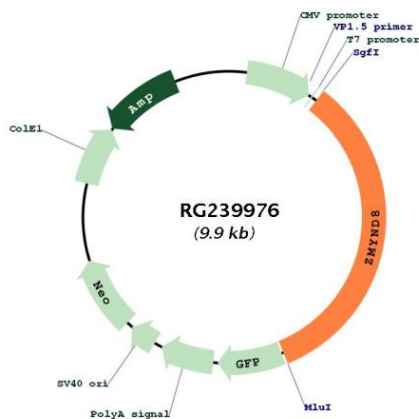


ACCN: NM_001281776

ORF Size: 3321 bp

OTI Disclaimer:	The molecular sequence of this clone aligns with the gene accession number as a point of reference only. However, individual transcript sequences of the same gene can differ through naturally occurring variations (e.g. polymorphisms), each with its own valid existence. This clone is substantially in agreement with the reference, but a complete review of all prevailing variants is recommended prior to use. More info
OTI Annotation:	This clone was engineered to express the complete ORF with an expression tag. Expression varies depending on the nature of the gene.
Components:	The ORF clone is ion-exchange column purified and shipped in a 2D barcoded Matrix tube containing 10ug of transfection-ready, dried plasmid DNA (reconstitute with 100 ul of water).
RefSeq:	NM_001281776.3
RefSeq Size:	5090 bp
RefSeq ORF:	3324 bp
Locus ID:	23613
UniProt ID:	Q9ULU4
Cytogenetics:	20q13.12
Protein Families:	Druggable Genome, Transcription Factors
MW:	124 kDa
Gene Summary:	The protein encoded by this gene is a receptor for activated C-kinase (RACK) protein. The encoded protein has been shown to bind in vitro to activated protein kinase C beta I. In addition, this protein is a cutaneous T-cell lymphoma-associated antigen. Finally, the protein contains a bromodomain and two zinc fingers, and is thought to be a transcriptional regulator. Multiple transcript variants encoding several different isoforms have been found for this gene. [provided by RefSeq, Jul 2008]

Product images:



Circular map for RG239976